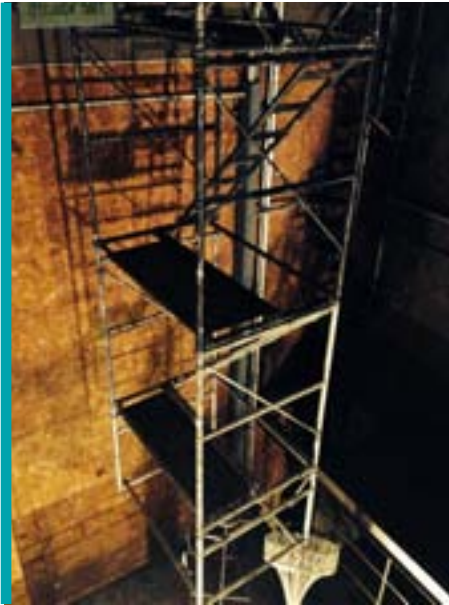




Fall Protection – Scaffolds/Elevated Work Platforms



Scaffolds and elevated work platforms are used in the performing arts for a variety of reasons. Cal/OSHA defines scaffolds as, “Any temporary elevated platform and its necessary vertical, diagonal, and horizontal members used to support workers and materials (also known as a scaffold tower).”

All crew members must receive formal and documented training regarding how to assemble and work safely on scaffolding, and performers must receive formal and documented training regarding working safely on scaffolds.

General Guidelines

1. Complete scaffold user safety training before working on a Performing Arts project that includes the use of a scaffold. A trained person with knowledge, prior experience, and the recognized ability to train users in scaffold assembly and use may provide scaffold user safety training.
2. Inspect all scaffolding parts before and after use.
3. Ensure the entire width of the scaffold platform is equipped with planking.
4. Ensure the planking is scaffold-grade or better wood when using wooden planking.
5. Immediately report any missing, broken, or defective scaffolding parts.
6. Use scaffolds only when they are constructed with the proper guardrails, mid rails, and toe boards (as appropriate).
7. Ensure toeboards are installed when work levels are 6 feet or higher above the ground floor and where persons are required to work or pass under the scaffold.
8. Ensure screens or other barriers are installed between the toeboards and upper guardrail if personnel will be passing under or near the scaffold.
9. Tie the scaffolding to a permanent structural support using heavy wire or tie-in devices.
10. Lock the wheels on rolling towers to prevent movement except when the tower is moved to a new location.
11. Keep scaffold loads within safe limits. Follow the manufacturer’s or construction coordinators safe working load recommendations. Ask if you don’t know the rated capacity.
12. Never use scaffolds where contact could be made with live electrical circuits or power lines. Always maintain safe clearance from any electrical source.
13. Immediately report any potentially hazardous conditions that become evident during operation.

Safe Use Guidelines

1. Use a personal fall arrest system when working from boatswains' chair, catenary, float, needle beam, ladder, or pump jack types of scaffolding.
2. Wear a hard hat equipped with a chin strap when working on a scaffold.
3. Tie off your personal fall protection system to a permanent structure. Never tie-off to the scaffold.
4. Never climb cross braces. Use only approved access ladders or steps to climb the scaffolding.
5. Use both hands while climbing, and always maintain three points of contact.
6. Never exceed the maximum allowable persons in the platform.
7. Never stand on the scaffold guardrails.
8. Never place ladders or makeshift devices on top of scaffolds to gain greater height.
9. Never ride a moving scaffold.
10. Never jump down onto the platform.

Talk to your supervisor if you have any questions about this information.