



**Annual Report on  
University Private Support**

**2003-04**

---

# UNIVERSITY OF CALIFORNIA

**Annual Report on  
University Private Support  
2003-04**

## **TABLE OF CONTENTS**

Overview	I
System Summary	2
Fundraising Campaigns	3
Source and Asset	4
Purpose	5
Division of Agriculture and Natural Resources	6
Distribution By Discipline	7
Endowed Chairs	8
Additions to Endowment	9
Planned Giving Assets Under Management	10
Reporting Conventions	11
The Campuses	12
Foundation Leadership	34
Glossary	36
Appendix I	38
Appendix II	39

The Annual Report on University Private Support 2003-04 can be viewed online at:

[www.ucop.edu/uer/instadv/annual/2004.pdf](http://www.ucop.edu/uer/instadv/annual/2004.pdf)

*This report is a compilation of private support data, campus narratives, and foundation rosters prepared by each campus. The method of rounding may produce the appearance of minor inconsistencies in various totals and percentages, but the differences do not affect the accuracy of the data.*

# PRIVATE SUPPORT

## Overview

---

For the fifth consecutive year, the University of California raised more than \$1 billion in private support from alumni and friends, corporations, and foundations. For the fiscal year ended June 30, 2004, the total for private gifts, grants and pledges was \$1.122 billion, an increase of 8.2 percent from the previous year when donors contributed \$1.037 billion. This represents a five-fold increase since the 1983-84 fiscal year when the University received \$215.7 million.

The results for the 2003-04 fiscal year reflect the generous support for major fundraising campaigns at the Los Angeles, San Diego and San Francisco campuses and for the efforts of a number of campuses that are preparing for comprehensive campaigns. Gifts in the form of new pledges increased 83.5 percent, reflecting the success of these capital campaigns. However, seven of the ten campuses showed increases during the past fiscal year.

This year also proved to be a banner year for gifts from non-alumni individuals, which increased by 38.7 percent to \$284.6 million. Gifts from alumni fell by 16.8 percent to \$130.3 million. Gifts and grants from private grant-making foundations, which for tax purposes must base their contributions on the performance of the markets the previous year, showed a decrease of just 1.2 percent from the 2002-03 fiscal year. Gifts from these foundations constitute the largest single source of private funds at \$398.6 million. This category includes family and community foundations, but it does not include corporate foundations, which are included in gifts from corporations. Corporate contributions increased 12.8 percent from the previous year.

Almost one-half of the total private support was directed to the various health sciences units of the University. Approximately 20 percent of all gifts were devoted to new endowments for all purposes, including 52 new endowed chairs. The total number of endowed chairs now exceeds 1,000. In addition, gifts for various capital improvement projects increased 81.7 percent and represented about one-fifth of all private support.

The University of California's remarkable achievement in raising in excess of \$1 billion dollars during each of the last five years is a continuing testament to the high regard in which the University is held by its alumni and friends, corporations and foundations. Additionally, this milestone is recognition of UC's far-reaching educational, research, economic and public service contributions to the state, nation and world.

The results underscore the continued confidence among donors in the quality of the University of California's programs and the importance of its core mission. Moreover, it reflects the hard work of the professional fundraising staff and the countless volunteers who assist in the University's fundraising efforts, especially the campus foundations, the leaders of which are listed in this report.

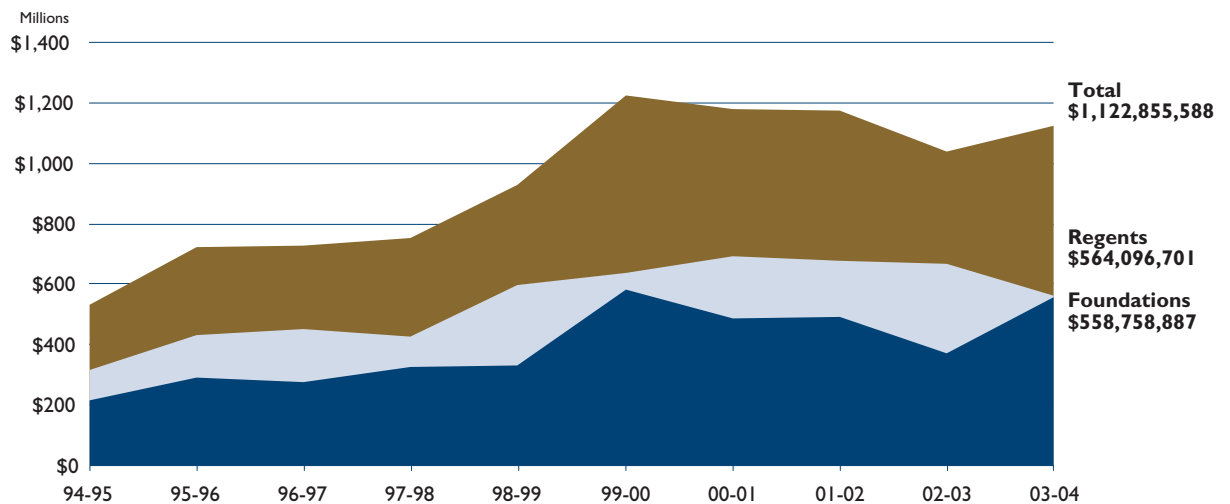
# PRIVATE SUPPORT

## System Summary

### Private Support to Regents and Foundations

CAMPUS	REGENTS	FOUNDATIONS	TOTAL
Berkeley	\$101,424,466	\$72,764,015	\$174,188,481
Davis	55,020,595	18,385,457	73,406,052
Irvine	24,224,419	42,122,309	66,346,728
Los Angeles	116,257,301	161,766,203	278,023,504
Merced	2,830,048	1,780,394	4,610,442
Riverside	7,271,615	4,191,371	11,462,986
San Diego	53,292,522	78,671,421	131,963,943
San Francisco	94,734,906	158,968,180	253,703,086
Santa Barbara	65,113,015	15,052,085	80,165,100
Santa Cruz	27,197,183	5,057,452	32,254,635
Universitywide	16,730,631	0	16,730,631
<b>TOTAL</b>	<b>\$564,096,701</b>	<b>\$558,758,887</b>	<b>\$1,122,855,588</b>

Source: University of California Office of the President



#### REPORTING CONVENTIONS

	99-00	00-01	01-02	02-03	03-04	03-04 TOTALS
<b>ACCRUAL (REGENTS)</b>						
New Pledges	\$464,907,610	\$439,456,493	\$551,322,781	\$195,665,861	\$359,427,785	\$1,122,855,588
New Outright Gifts	\$754,941,797	\$715,596,169	\$749,854,424	\$841,648,195	\$763,427,803	\$1,038,145,704
Pledge Payments	\$214,058,425	\$284,510,669	\$236,605,595	\$267,642,375	\$274,717,901	

# PRIVATE SUPPORT

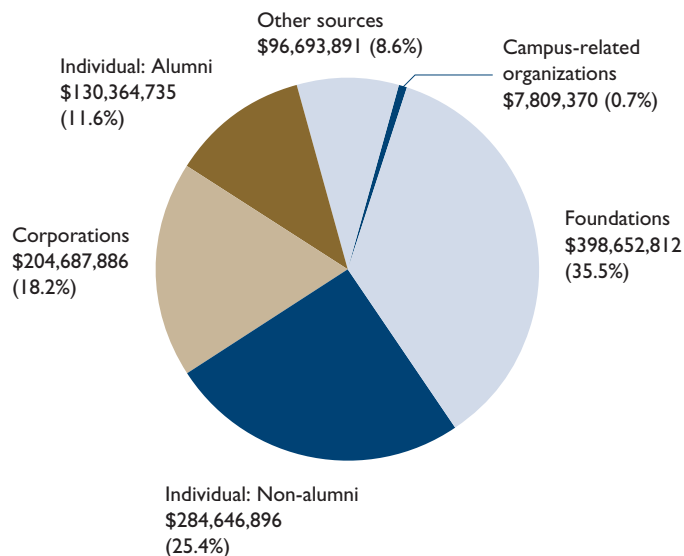
## Fundraising Campaigns

NAME OF CAMPAIGN	GOAL	DURATION	GIFTS/PLEDGES BY 6/30/04
<b>BERKELEY</b>			
No campaign at this time			
<b>DAVIS</b>			
No campaign at this time			
<b>IRVINE</b>			
UCI Medical Center Campaign	50,000,000	2002-2008	15,487,875
<b>LOS ANGELES</b>			
Campaign UCLA	2,400,000,000	1995-2005	2,564,606,809
<b>MERCED</b>			
Ernest and Julio Gallo School of Management Endowment	10,000,000	2002-2007	5,500,000
Endowed Chair Campaign	5,000,000	2002-2006	4,000,000
Gymnasium Expansion Campaign	1,500,000	2004-2006	525,000
TOTAL	16,500,000		10,025,000
<b>RIVERSIDE</b>			
Evolutions: The 50th Anniversary Campaign	50,000,000	2003-2005	31,410,140
<b>SAN DIEGO</b>			
The Campaign for UCSD - Imagine What's Next	1,000,000,000	2000-2007	606,800,000
<b>SAN FRANCISCO</b>			
The Campaign for UCSF	1,400,000,000	1999-2005	1,384,994,000
<b>SANTA BARBARA</b>			
The Campaign for UC Santa Barbara	350,000,000	2000-2007	233,753,340
<b>SANTA CRUZ</b>			
Cornerstone Campaign	50,000,000	2003-2005	32,254,000
University Center, Chancellor's Office	400,000	1999-2004	701,000
Center for Ocean Health	7,300,000	2000-2006	5,420,000
TOTAL	7,700,000		6,121,000
<b>GRAND TOTAL</b>	<b>\$5,324,200,000</b>		<b>\$4,885,452,164</b>

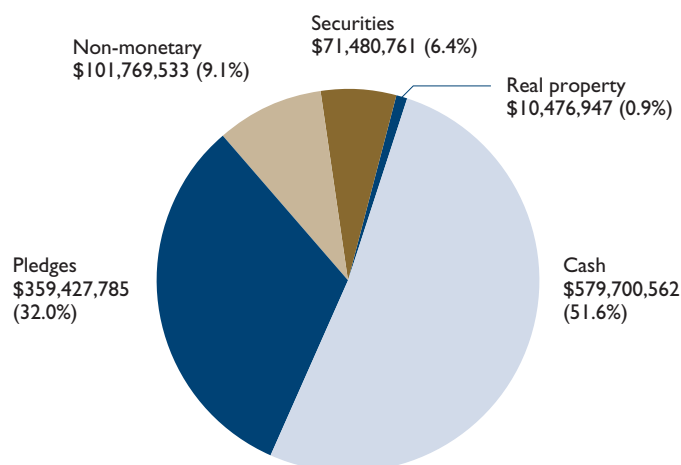
# PRIVATE SUPPORT

## Source and Asset

### Gift Source



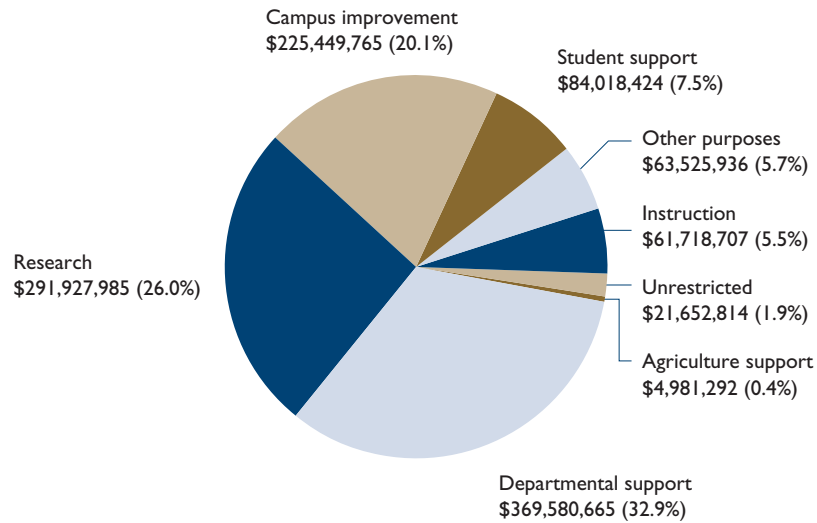
### Gift By Type Of Asset



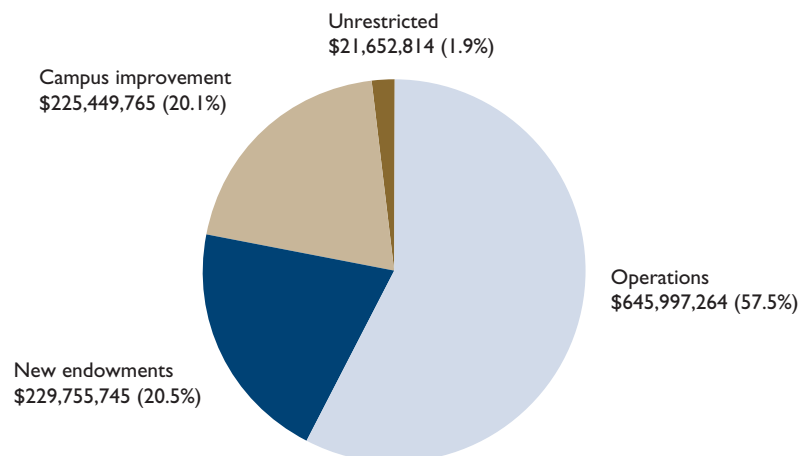
# PRIVATE SUPPORT

## Purpose

### Gift Purpose



### Gifts For Endowment, Campus Improvement And Operations





# PRIVATE SUPPORT

## Division of Agriculture and Natural Resources (ANR)

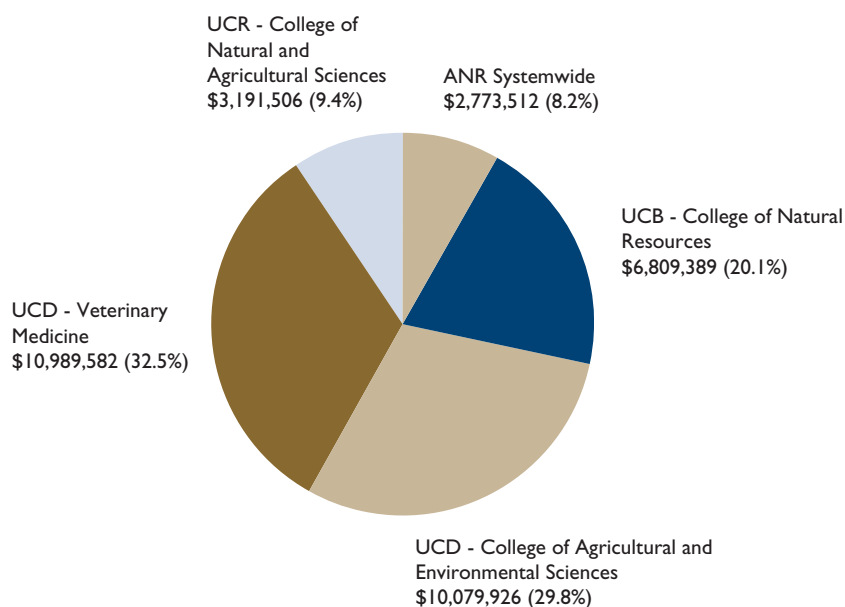
The Division of Agriculture and Natural Resources (ANR) is a statewide network of the University of California researchers and educators dedicated to creating, developing and applying knowledge and practical information in agricultural, natural and human resources. ANR comprises the Agricultural Experiment Station, Cooperative Extension and more than 15 statewide programs. The campus-based and county-based units bring the University of California to every community in the state.

The Agricultural Experiment Stations (AES) included more than 650 academic appointees who hold the title “AES scientist”. These scientists are the primary source of new research-based knowledge applicable to the needs of the division’s constituencies. Most of these individuals also hold professorial appointments in one of over 50 departments in the four colleges and schools affiliated with ANR at the Berkeley, Davis and Riverside campuses, splitting their time between AES research and campus teaching responsibilities. The number of academic full-time equivalent (FTE) employees in the AES is approximately 350.

University of California Cooperative Extension (UCCE), ANR’s outreach arm, has farm, 4-H and nutrition, family and consumer science advisors based in more than 50 California counties. In addition, Cooperative Extension specialists are headquartered at the Berkeley, Davis, and Riverside campuses, where they conduct research and coordinate outreach activities with advisors. Because UC is a land-grant institution, the Cooperative Extension mandate is tied to the welfare, development, and protection of California agriculture, natural resources, and people.

Private support for agriculture totaled \$33,843,915 for 2003-04, including \$17,188,951 designated specifically for research. Private gifts from individuals, corporations and foundations also provided support for instruction, student aid and fellowships, extension activities, and youth development activities, including 4-H programs.

### Total Giving to ANR: \$33,843,915



# PRIVATE SUPPORT

## Distribution By Discipline

### Gifts By Area: \$1,122,855,588

	TOTAL	PERCENTAGE
Agriculture and natural resources	\$ 22,650,162	2.0%
Arts, letters and sciences	174,626,536	15.6%
Athletics	24,103,708	2.1%
Business/management	16,046,809	1.4%
Engineering	126,717,197	11.3%
Financial aid undesignated by discipline and student programs	33,708,572	3.0%
Health sciences	522,995,127	46.6%
Law	17,211,293	1.5%
Libraries	24,563,747	2.2%
Other*	115,472,576	10.3%
Other professional schools	33,770,278	3.0%
Veterinary medicine	10,989,582	1.0%
<b>TOTAL</b>	<b>\$1,122,855,588</b>	<b>100.0%</b>

\* Chancellor and annual funds, alumni associations, energy laboratories, museums, public programs, etc.

### Gifts For Health Sciences: \$522,995,127

	TOTAL	PERCENTAGE
Biological sciences	\$ 32,724,175	6.3%
Biomedical sciences	1,319,778	0.3%
Dentistry	13,128,147	2.5%
Medical centers	295,739,913	56.5%
Medical center including gifts for construction and renovation	5,374,665	1.0%
Miscellaneous health sciences	151,239,259	28.9%
Nursing	8,588,811	1.6%
Optometry	609,606	0.1%
Pharmacy	7,285,400	1.4%
Public health	6,985,374	1.3%
<b>TOTAL</b>	<b>\$522,995,127</b>	<b>100.0%</b>

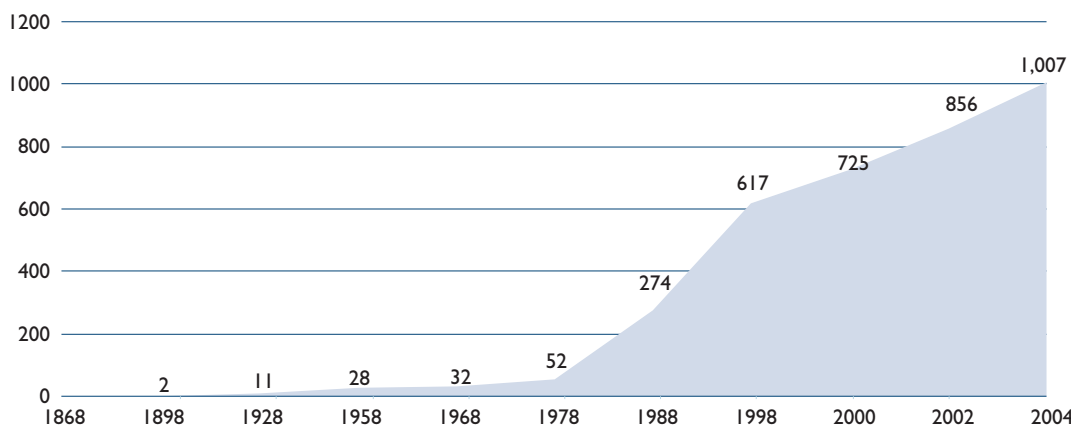
### Gifts For Health Sciences By Campus: \$522,995,127

	TOTAL	PERCENTAGE
Berkeley	\$ 14,357,882	2.7%
Davis	22,288,132	4.3%
Irvine	17,191,202	3.3%
Los Angeles	157,489,207	30.1%
Riverside	329,530	0.1%
San Diego	36,879,188	7.1%
San Francisco	253,703,087	48.5%
Santa Cruz (Biological sciences)	20,756,435	4.0%
Universitywide programs	465	<0.1%
<b>TOTAL</b>	<b>\$522,995,127</b>	<b>100.0%</b>

# PRIVATE SUPPORT

## Endowed Chairs

### Endowed Chairs



In its first 92 years, the University received gifts to endow a total of 28 chairs. By 1980, an additional 52 chairs had been established. Now, 24 years later, the total stands at 1,007 endowed chairs and professorships, which are distributed across the campuses and provide support for the teaching, research and public service activities of incumbents and their departments. The total market value of all chairs as of June 30, 2004 exceeds \$1.02 billion.

The list of chairs on each campus can be viewed at: [www.ucop.edu/ucr/instadv/endowedchairs.html](http://www.ucop.edu/ucr/instadv/endowedchairs.html)

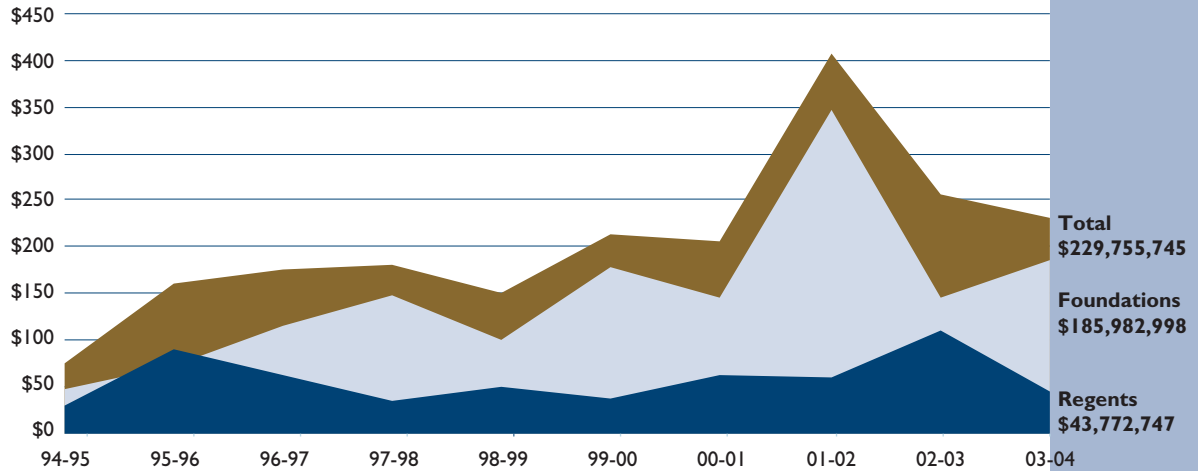
### Distribution By Discipline

	<u>Number</u>
Agriculture	31
Engineering	118
Humanities	77
Life and Biological Sciences	61
Physical Sciences	49
Social Sciences	112
Professional Schools	161
Health Sciences	319
Veterinary Medicine	2
Miscellaneous and Multi-disciplinary	77
<b>Total</b>	<b>1,007</b>

# PRIVATE SUPPORT

## Additions To Endowment

Additions to Endowment: \$230 million

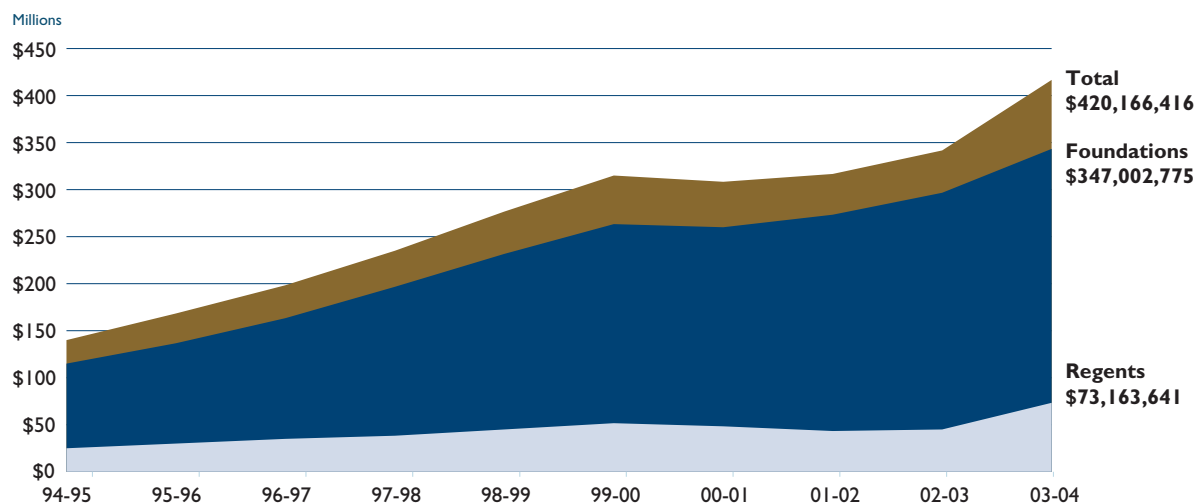


YEAR	REGENTS		FOUNDATIONS		TOTAL
1994-95	\$28,949,540	38.7%	\$45,799,736	61.3%	\$74,749,276
1995-96	88,722,584	55.1%	72,260,031	44.9%	161,032,615
1996-97	62,213,632	35.2%	114,479,717,	64.8%	176,693,349
1997-98	33,229,661	18.3%	148,286,625	81.7%	181,516,286
1998-99	49,304,263	32.8%	100,991,901	67.2%	150,296,164
1999-00	36,416,766	17.0%	177,178,480	83.0%	213,592,246
2000-01	60,908,962	29.5%	145,823,645	70.5%	206,732,607
2001-02	60,686,929	14.9%	347,068,519	85.1%	407,755,478
2002-03	109,630,734	42.9%	145,688,480	57.1%	255,318,914
2003-04	43,772,747	19.1%	185,982,998	80.9%	229,755,745

The fair market value of all endowments (Regents and Foundations) was over \$6.5 billion on June 30, 2004.

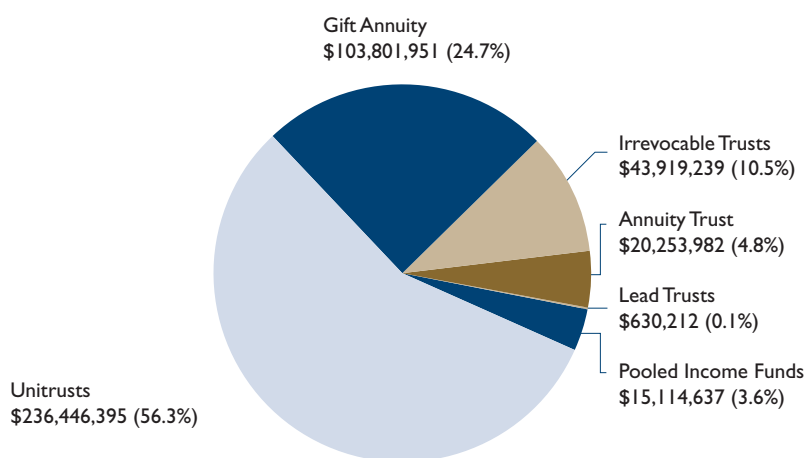
# PRIVATE SUPPORT

## Planned Giving Assets Under Management



Planned giving assets include irrevocable charitable remainder trusts, pooled income funds, gift annuities, and similar arrangements where the University or campus foundation is the trustee. The principal is distributed to the University for the charitable purpose specified by the donors on the death of the income beneficiaries or at the expiration of a term of years.

### Total Planned Giving Assets: \$420,166,416



### Other Planned Gifts

No.		Total
342	Estate distributions (2003-04)	\$116,501,603
184	Externally-held irrevocable trust as of June 30, 2004	119,293,280
62	Life Insurance policies that matured in 2003-04	10,117,487

# PRIVATE SUPPORT

## Reporting Conventions

The Annual Report on University Private Support includes data for each campus using two of three gift reporting conventions employed by the University. The first method is the standard that has been used for private support reports to The Regents for many years. It is a variation of the *accrual* system and includes new, legally-binding pledges up to five years in duration, plus outright gifts. In this system, payments made on pledges are not included. The method is thought to present the best perspective on the level of current fundraising activity and is the reporting standard used for most purposes in this report, including systemwide and campus detail reports.

The second reporting convention, which is *cash*-based, is used for comparisons with other institutions. It is also employed for the Council on Aid to Education's (CAE) national Voluntary Support of Education Survey completed by colleges and universities. This reporting convention includes outright gifts and pledge payments, but does not include new pledges. This method of gift reporting is thought to present the best perspective on the cash flow that derives from private support. These first two reporting standards are shown at the bottom of each campus narrative. In future reports, this second, cash-based standard will also be used to show campus and systemwide detail.

The breakdown of 2003-04 gift data are as follow:

REPORTING CONVENTIONS	99-00	00-01	01-02	02-03	03-04	03-04 TOTALS
ACCRUAL (REGENTS)	New Pledges					
	\$464,907,610	\$439,456,493	\$551,322,781	\$195,665,861	\$359,427,785	\$1,122,855,588
CASH (CAE)	New Outright Gifts					
	\$754,941,797	\$715,596,169	\$749,854,424	\$841,648,195	\$763,427,803	
	Pledge Payments					
	\$214,058,425	\$284,510,669	\$236,605,595	\$267,642,375	\$274,717,901	\$1,038,145,704

There is a third reporting convention that is employed by the University's accounting office for its end-of-year audited financial reports. This method is also based on accrual, however, on the revenue side, unconditional, legally-binding pledges are recorded at the time they are promised, balanced by receivable accounts which are reduced as pledge payments are received. Beginning with the 2004 UC Annual Financial Report, private support directed to the separately incorporated Campus Foundations will be included.

Powered by one of the largest bequests in its history, UC Berkeley raised \$174.2 million in fiscal 2003-04 in private support.

The university also reported the largest number of unique donors in a single year — 56,178 — reflecting increased participation by UC Berkeley's alumni, parents, students, and friends. The number of donors bests the record of 51,693 from the previous year.

The bequest came from William V. Power B.S. '30, totaling \$46.5 million. All told, his gifts will exceed \$50 million when the estate is fully settled.

Power, who died in August 2003, designated his bequest to benefit the faculty, graduate student fellowships, the Health Sciences Initiative, and other areas. He also bestowed his Portola Valley home to UC Berkeley.

Power, who began working as a caddy at age seven and lost his father during his teens, was determined to go to college, and entered UC Berkeley in 1926. He began his career selling life insurance during the Depression. His company merged with the world's largest insurance brokerage in the 1970s, and he continued to serve as a company officer until his retirement.

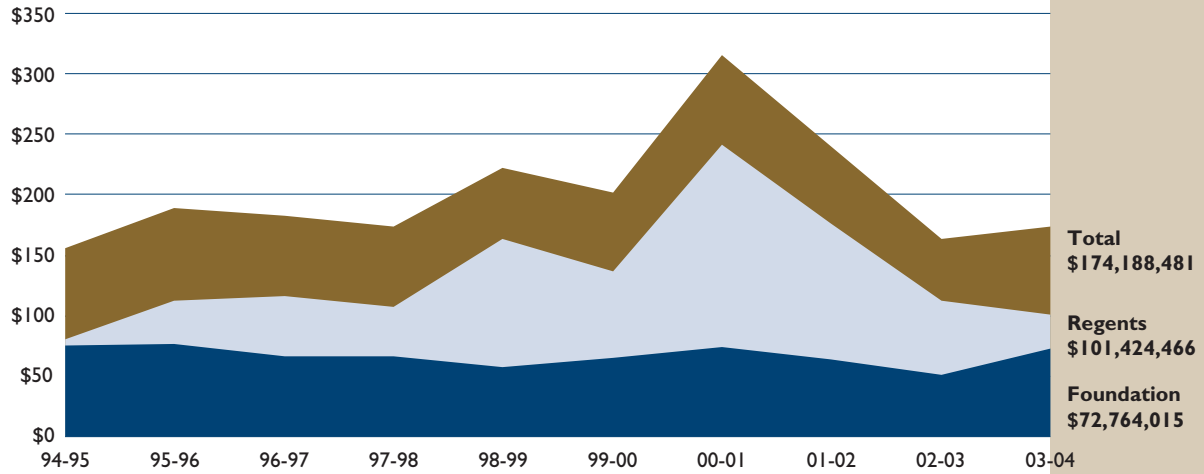
"Bill Power's magnificent bequest reflects the critical influence Cal had on his life," said Donald A. McQuade, vice chancellor for university relations. "Bill Power's life exemplifies how the opportunity that a Berkeley education creates for one student can come full circle to help future generations of faculty and students fulfill their potential."

Other top gifts for the year included:

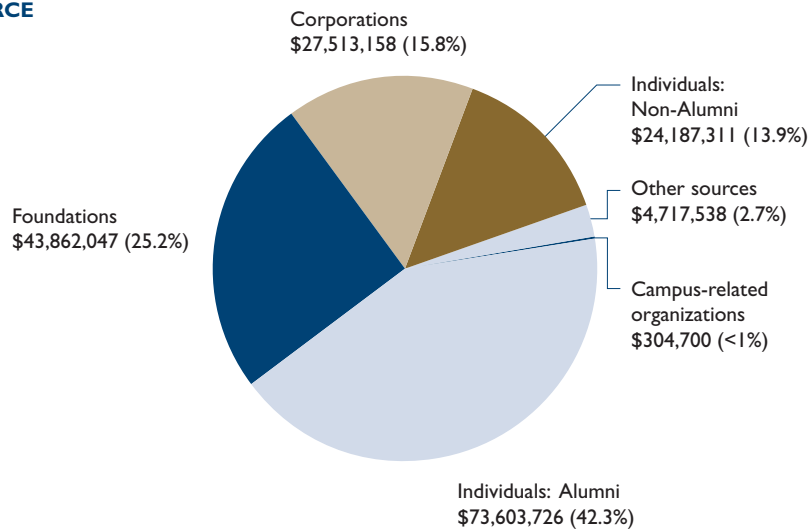
- \$5 million from The Bernard Osher Foundation for The Osher Incentive Awards Program East Side San Jose Endowment Fund and The Incentive Awards Program Fund.
- \$3.2 million trust from Corinne Rustici B.S. '46 to support advancements in nutrition.
- \$2.9 million bequest from the estate of Mrs. Ann E. Shiffler for The Ann E. Shiffler Fund, which benefits the College of Chemistry.
- \$2.5 million for Cal Performances, given anonymously.
- \$2 million from The Starr Foundation for the East Asian Library Building Fund.

REPORTING CONVENTIONS	99-00	00-01	01-02	02-03	03-04	03-04 TOTALS
<b>ACCURAL (REGENTS)</b>	<b>New Pledges</b>					
	\$76,270,826	\$156,958,905	\$88,245,094	\$20,597,836	\$23,969,033	\$174,188,481
	<b>New Outright Gifts</b>					
	\$125,091,012	\$158,363,441	\$152,172,306	\$143,257,398	\$150,219,447	
<b>CASH (CAE)</b>	<b>Pledge Payments</b>					
	\$43,947,112	\$44,592,357	\$71,378,616	\$47,560,078	\$32,181,449	\$182,400,896

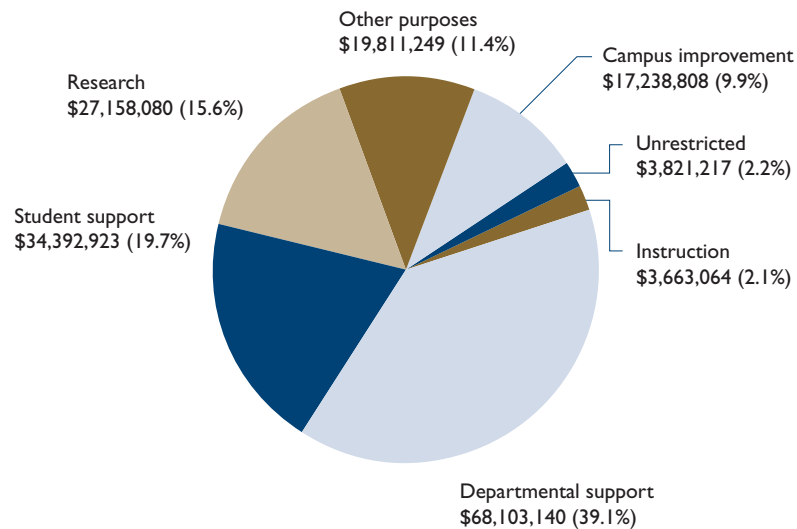
## TOTAL GIVING (\$ MILLIONS)



## GIFT SOURCE



## GIFT PURPOSE





Alumni, friends, corporations and philanthropic organizations contributed \$73.4 million to UC Davis in 2003–04, making it the fifth consecutive year in which private gifts have topped \$70 million. It is the second-highest gift total in campus history, exceeding the \$71.7 received last year.

“The generous contributions from our donors will be vital as we continue to provide enriching learning experiences and leadership opportunities for students, lead the world in new discoveries, and engage in the community around us,” Chancellor Larry Vanderhoef says.

Indeed, nearly half of the private gifts made in 2003–04 will support research, students and academic programs. Donors gave \$26.8 million to research, including a \$3 million gift from the West Sacramento-based firm DTL Mori Seiki Inc. to the College of Engineering. It is the largest cash gift ever made to the College of Engineering and it will support research in “smart” computer-run manufacturing and design tools, which is being spearheaded by professor of mechanical engineering Kazuo Yamazaki.

UC Davis received almost \$7.5 million for student support and instruction, including \$1.9 million from the estate of Gladys Smith for endowed undergraduate scholarships and medical school fellowships.

Donors also gave \$11 million in departmental support. This included a \$500,000 gift from Davis-based Novozymes Biotech Inc., a subsidiary of Novozymes A/S, the world's largest industrial enzyme developer. Novozymes Biotech, headed by UC Davis Foundation trustee Glenn Nedwin, established an endowed chair in genomics that will be filled by the director of the campus's new Genome Center.

Other major contributions included \$1 million from the W.M. Keck Foundation to fund the Center for Active Visualization in Earth Sciences; \$1.4 million from the estate of Frances Lazda to support women's cardiovascular and urological health in the School of Medicine; \$1.3 million from the estate of Natalie Fosse to the department of ophthalmology in the School of Medicine; \$1 million from Susan Mathews to the UC Davis Cancer Center; and \$1 million from Maxine Adler to support cancer research at the Center for Companion Animal Health in the School of Veterinary Medicine.

UC Davis received gifts from 51,692 donors. Corporations contributed \$27 million, or 37 percent; non-alumni individuals gave \$21.6 million or 29 percent; private foundations contributed \$9 million or 12 percent; and alumni gave \$2.8 million or about 4 percent.

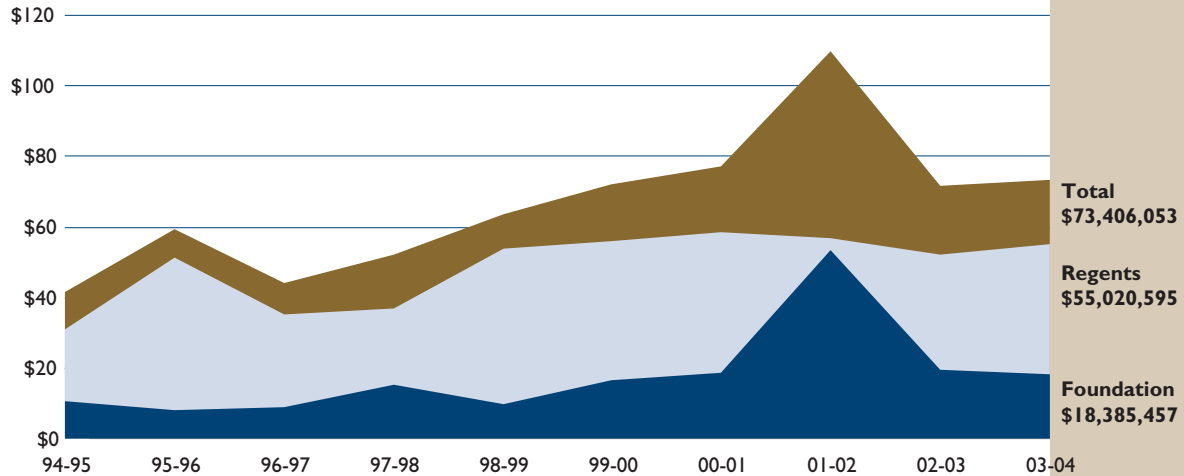
A number of UC Davis programs and units raised their gift levels compared to the previous year. Gifts to the division of biological sciences increased by 148 percent to \$3.5 million. The College of Engineering nearly doubled its support, from \$7 million in 2002–03 to just under \$14 million in 2003–04, while the College of Letters and Science increased its gift total 28 percent to \$3.3 million. The School of Veterinary Medicine increased its total by 10 percent to \$11 million; the School of Law increased private support by 16 percent to just over \$1 million; and gifts to the UC Davis Health System and School of Medicine climbed 9 percent to \$18.7 million.

The UC Davis Annual Fund had a record-setting year, raising \$1.6 million in unrestricted gifts that are used to support faculty recruitment and retention, student financial aid, strategic planning and other high-priority needs.

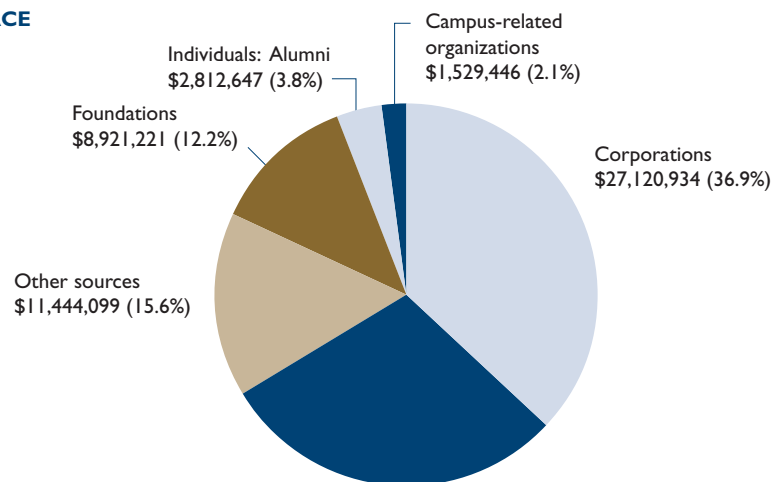
## REPORTING CONVENTIONS

	99-00	00-01	01-02	02-03	03-04	03-04 TOTALS
<b>ACCURUAL (REGENTS)</b>						
New Pledges	\$14,869,000	\$12,177,849	\$35,735,239	\$14,450,833	\$11,695,047	\$73,406,052
New Outright Gifts	\$56,685,784	\$65,213,694	\$74,043,602	\$57,259,654	\$61,711,004	
Pledge Payments	\$19,630,714	\$8,129,969	\$8,534,019	\$7,757,037	\$20,940,648	\$82,651,653
<b>CASH (CAE)</b>						

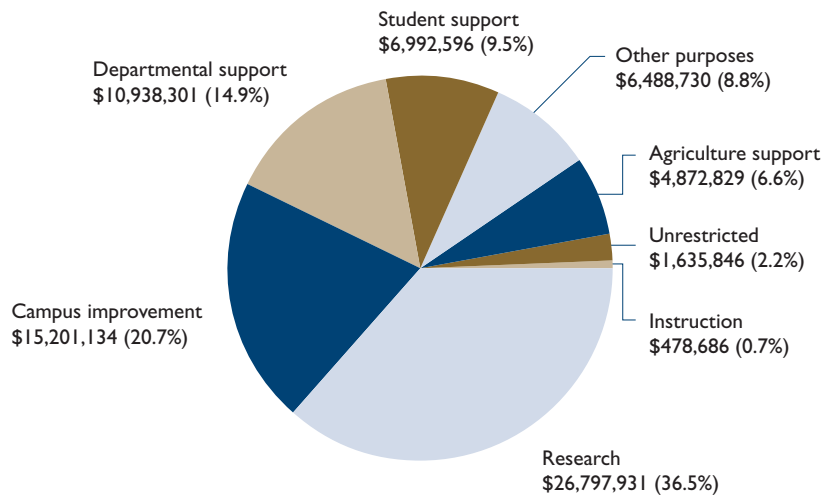
### TOTAL GIVING (\$ MILLIONS)



### GIFT SOURCE



### GIFT PURPOSE



Private giving to UC Irvine increased to \$66.3 million in 2003-04, up 16 percent over last year and 86 percent over the prior year. The figure is the second highest in the campus's history. UCI also received a record 18,398 gifts.

"This generous private support reflects the spirit of the university's vital partnership with the community," said Chancellor Ralph J. Cicerone. "These efforts help to sustain UCI's competitive edge by enabling us to build new facilities, recruit distinguished faculty and attract top students to our campus. UCI will continue to rise in the ranks of public research universities with the support and generosity of efforts like these."

Nearly 70 percent of the donations to UCI in 2003-04 came from corporations and foundations. Corporate gifts made up 20 percent of the total; foundation grants, 48 percent; gifts from alumni and friends, 23 percent; and gifts from other organizations, 9 percent.

"These results clearly reflect our community's confidence in UCI leadership and support for UCI's expansion of its research, educational programs, and facilities," said Ted Smith, chair of The UCI Foundation. "Orange County is committed to having a world-class research university and medical center. These generous gifts are an important investment in UCI, in its students and in the regional economy."

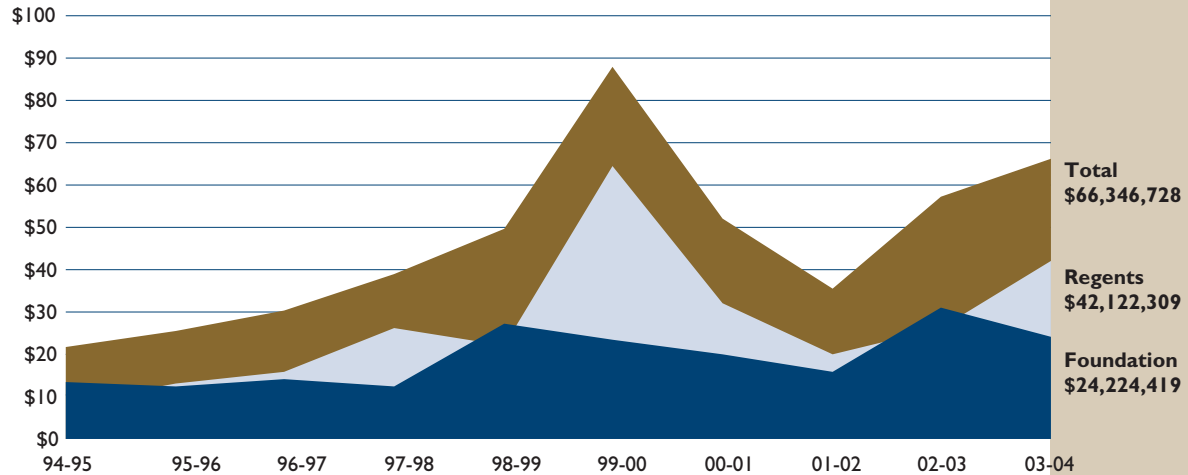
Private gifts contribute to the long-term success of the university by helping it achieve academic and research excellence in areas that are not fully funded by other sources.

Gifts received last year included:

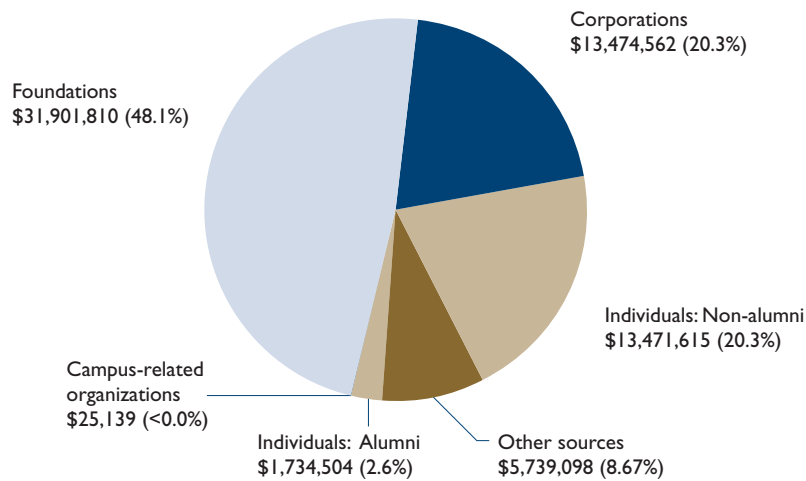
- \$20 million from business leader and philanthropist Donald Bren, chairman of The Irvine Company, administered through the Donald Bren Foundation, to create 10 endowed chairs for distinguished faculty, as well as provide other support for the Donald Bren School of Information and Computer Sciences. The gift equals the largest single contribution ever to UCI.
- \$1 million from Vivian and Edward Thorp, founding faculty member and pioneer in the field of quantitative finance, to create the Thorp Chair in Mathematics in the School of Physical Sciences.
- A gift from entrepreneur Jack Langson, president and owner of Investment Building Group, a Southern California-based commercial real estate development firm, to support improvements and technological advancements to the main campus library, recently renamed Jack Langson Library in his honor.

REPORTING CONVENTIONS	99-00	00-01	01-02	02-03	03-04	03-04 TOTALS
<b>ACCRUAL (REGENTS)</b>						
New Pledges	\$44,523,679	\$20,182,013	\$9,942,045	\$19,946,851	\$33,633,464	\$66,346,728
New Outright Gifts	\$43,361,343	\$31,858,791	\$25,684,318	\$37,364,356	\$32,713,264	
Pledge Payments	\$23,892,811	\$16,631,516	\$13,216,495	\$15,861,325	\$19,633,772	\$52,347,035

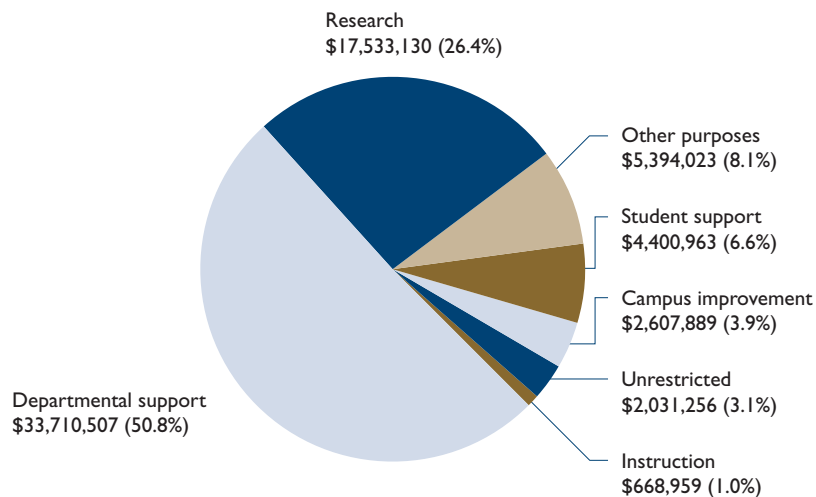
### TOTAL GIVING (\$ MILLIONS)



### GIFT SOURCE



### GIFT PURPOSE



During 2003-04, Campaign UCLA received more than \$278 million in private gifts and grants, marking the sixth consecutive year in which UCLA's gift total has surpassed \$250 million.

This figure, which reflects gifts and pledges received between July 1, 2003, and June 30, 2004, propelled the total for the campaign to over \$2.56 billion, exceeding the \$2.4 billion goal by nearly 7 percent in advance of its 2005 conclusion.

While this represents an historic achievement in university fund raising, increasing financial support for students and faculty remains a campuswide priority. To address this area of need, UCLA launched the Ensuring Academic Excellence Initiative in June 2004, designed to generate \$250 million in private commitments through 2009 specifically to help attract and retain top students and faculty. Among the initiative's financial goals are to raise \$100 million to fund 100 new endowed chairs, \$100 million to fund fellowships and scholarships in the UCLA College, and \$50 million for fellowships and scholarships in UCLA's professional schools.

"This new initiative continues our work to attract top-flight scholars and students in the face of widening funding disparities between elite public research universities and private institutions," says Chancellor Albert Carnesale.

Advancing the initiative, six new chairs were raised in the UCLA College during the past year through gifts totaling over \$7.8 million, benefiting such areas as psychology, chemistry, biology, and microbiology, immunology and molecular genetics.

Other highlights of the past year include a \$25 million gift from Jane and Terry Semel to UCLA's Neuropsychiatric Institute to advance interdisciplinary research and teaching in the neurosciences. The gift is the largest ever made to the institute, which will be named the Jane and Terry Semel Institute of Neuroscience and Human Behavior at UCLA.

The UCLA School of Law received a commitment of \$4 million from Charles R. Williams to enhance the Charles R. Williams Project, a national think tank founded by Williams in 2001 and dedicated to advancing critical thought in the field of sexual orientation law and public policy. In addition to providing general support for the project, the gift will also provide resources for a fellowship and a visiting scholars program. In recognition of Williams' philanthropy, the project will be named The Charles R. Williams Institute.

REPORTING CONVENTIONS

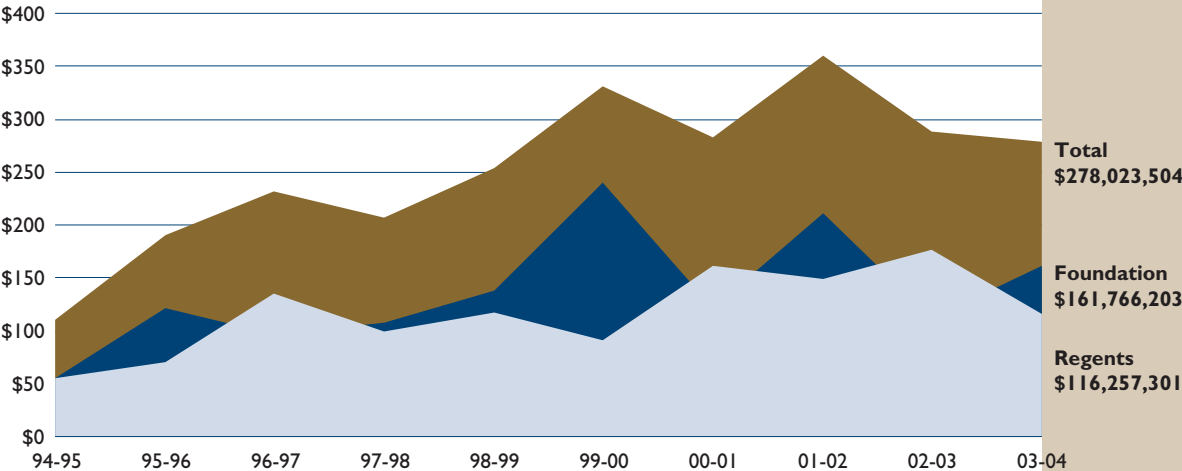
ACCRUAL (REGENTS)

CASH (CAE)

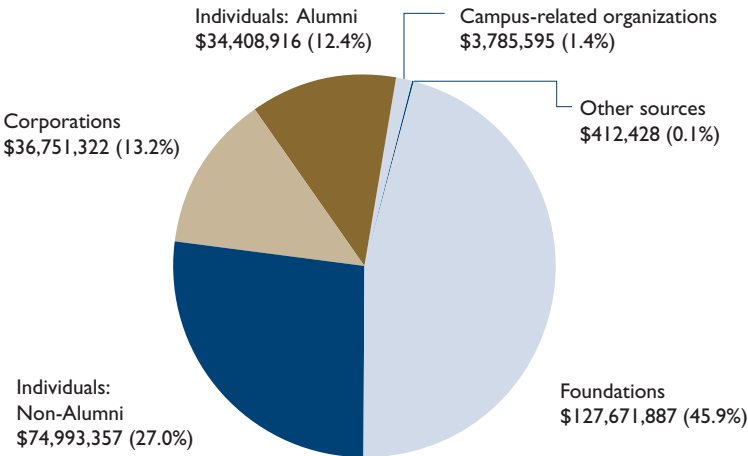
	99-00	00-01	01-02	02-03	03-04	03-04 TOTALS
New Pledges	\$145,133,941	\$82,239,904	\$292,398,941	\$63,286,940	\$104,732,419	\$278,023,504
New Outright Gifts	\$177,067,455	\$175,027,283	\$195,531,177	\$224,818,644	\$173,291,085	\$262,148,587
Pledge Payments	\$70,255,996	\$62,740,524	\$64,201,218	\$90,078,476	\$88,857,502	

# LOS ANGELES

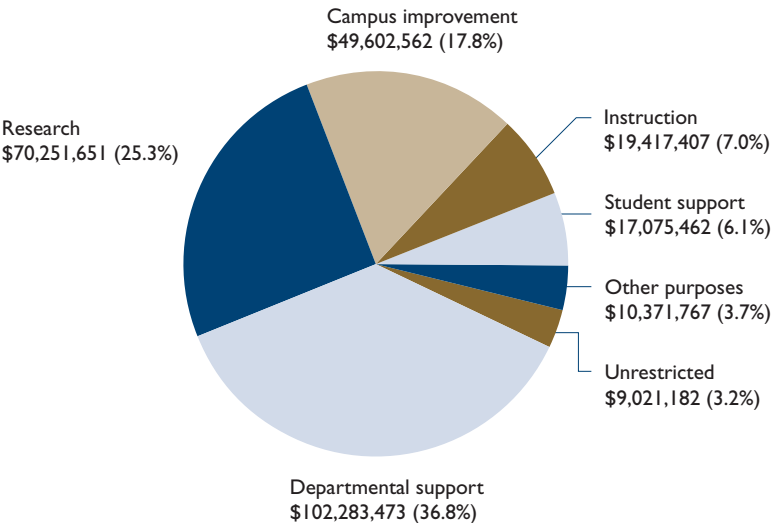
## TOTAL GIVING (\$ MILLIONS)



## GIFT SOURCE



## GIFT PURPOSE



As the clock ticks nearer to UC Merced's opening day of Sept. 6, 2005, the campus is preparing for its first students with the crucial help of generous private donors.

"In the past year, many generous donors have nurtured UC Merced with their time, talents and philanthropy," said Chancellor Carol Tomlinson-Keasey. "In September of 2005, we will see the harvest of their labors when we open the campus and begin transforming young people's lives."

Among the areas boosted through private giving are expansions and enhancements for the library and recreation center, scholarships, endowed chairs and a new Early Care and Education Center for children.

A gift of \$108,000 from Doris Gonella of Merced will enhance the primary teaching room in the Leo S. Kolligian Library. This donation is planned to add furniture and high-tech instruction equipment in the room, and it provides an endowment to keep equipment up-to-date.

Area homebuilders Greg and Cathie Hostetler contributed \$500,000 to create the Greg and Cathie Hostetler Court, which is planned as a multipurpose, NCAA regulation-sized gymnasium in the Joseph Edward Gallo Recreation and Wellness Center. Another \$500,000 donation for the expansion and enhancement of this center came from the Modesto-based Mary Stuart Rogers Foundation.

The Merced County Association of Realtors and Ray and Joan Dezember of Bakersfield have both established scholarships in 2003-04. The Realtors will donate a portion of the proceeds from every sale in the booming Merced area, and the Dezembers have given \$500,000 to create an endowed scholarship for students from Kern County.

With a gift of \$2500, longtime UC Merced supporters Ritch and Joan Eich of Thousand Oaks have pioneered the UC Merced Trustees' Scholarship Initiative, which allows individuals and organizations to create one-year, named scholarships through attainably sized donations. This initiative should bring many more scholarship donations to UC Merced.

Reno Ferrero has established an endowed chair to support a scholar researching critical issues in electrical engineering. An endowed chair in communications has been established by the McClatchy Corp., which bought the *Merced Sun-Star* in 2004. John Myers has also established a chair at the Sierra Nevada Research Institute. Each of these has been established with a gift of \$500,000.

The Merced County First 5 Commission, the Merced County Office of Education, and the University of California Office of the President have committed to fund an Early Care and Education Center at UC Merced. The center will fill a crucial need for the university and the surrounding area.

The Chancellor's Associates continue to play a vital role at UC Merced.

Thanks to the generosity of those mentioned above and other thoughtful donors, UC Merced gratefully received \$4.6 million in private gifts during the 2003-04 fiscal year.

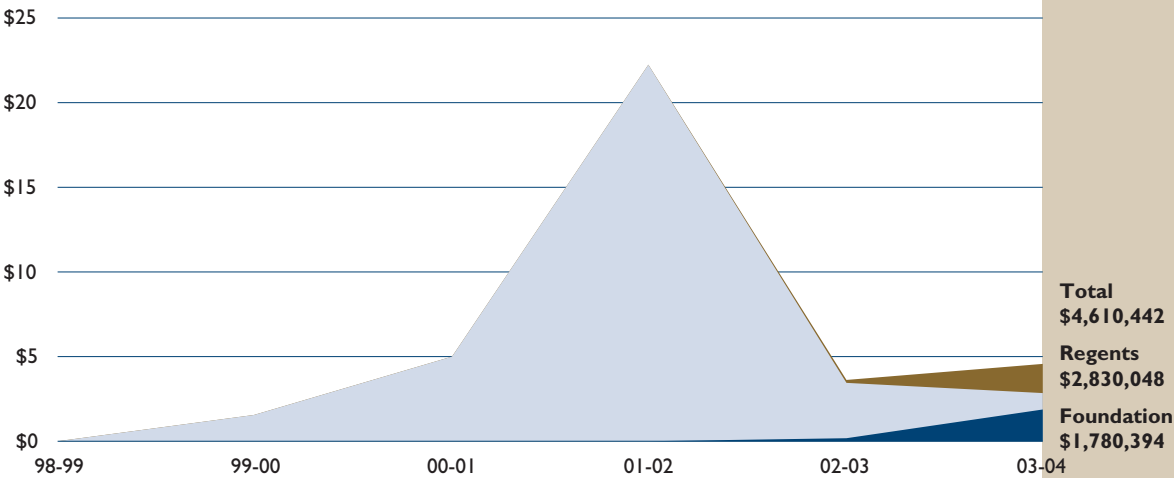
#### REPORTING CONVENTIONS

##### ACCRUAL (REGENTS)

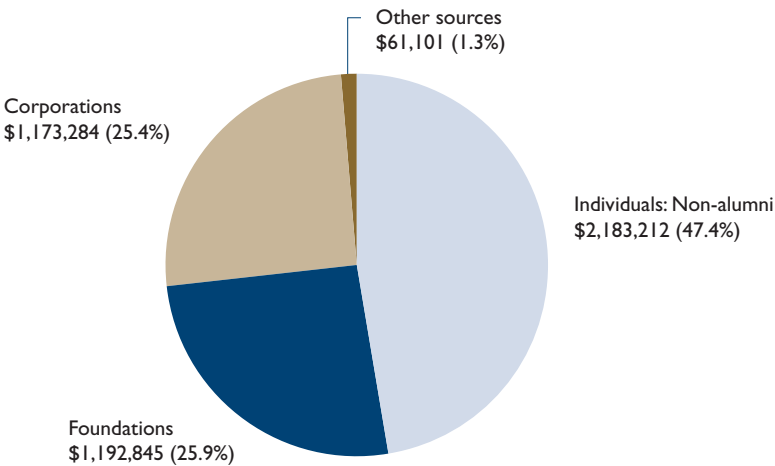
##### CASH (CAE)

	99-00	00-01	01-02	02-03	03-04	03-04 TOTALS
New Pledges	\$1,500,000	\$5,020,000	\$22,038,000	\$2,253,700	\$2,708,100	\$4,610,442
New Outright Gifts	\$92,153	\$18,993	\$196,843	\$1,364,061	\$1,902,342	
Pledge Payments	\$225,575	\$1,203,000	\$1,373,234	\$6,728,929	\$2,471,606	\$4,373,948

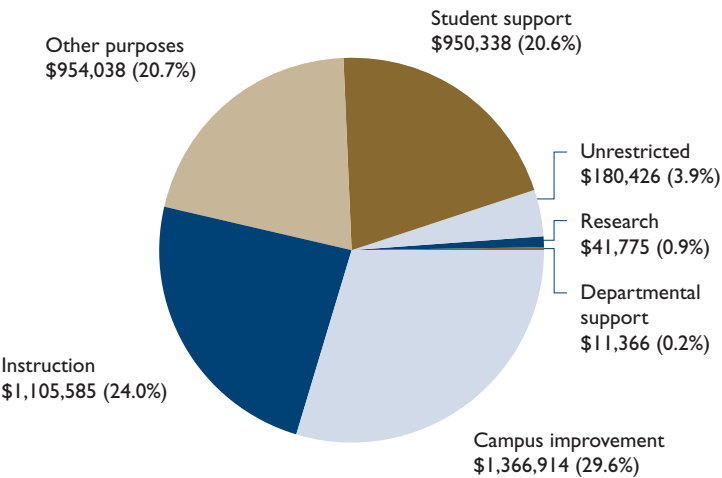
TOTAL GIVING (\$ MILLIONS)



GIFT SOURCE



GIFT PURPOSE





UCR continued to build its fundraising base during a time of economic uncertainty and transition on the campus. UC Riverside received \$11,462,986 in private support in 2003-04. Gifts from alumni, friends, corporations and foundations supported every area of campus, including scholarships and fellowships, capital projects, endowed chairs, university research and educational programs.

The campus in 2003-04 made progress in several areas that position the campus to initiate its first fundraising campaign. In January, UCR launched the public phase of a \$50 million campaign effort entitled Evolutions: UCR's 50th Anniversary Campaign. The campaign is aimed at providing funding for scholarships, fellowships, academic programs and a variety of campuswide educational initiatives, and is serving to galvanize UCR's alumni and board of trustees in UCR's first-ever comprehensive campaign.

"The Evolutions campaign will bring essential support to areas of high priority for the campus and great need, especially in the areas of scholarships and fellowships," said Robert J. Nava, interim vice chancellor for university advancement.

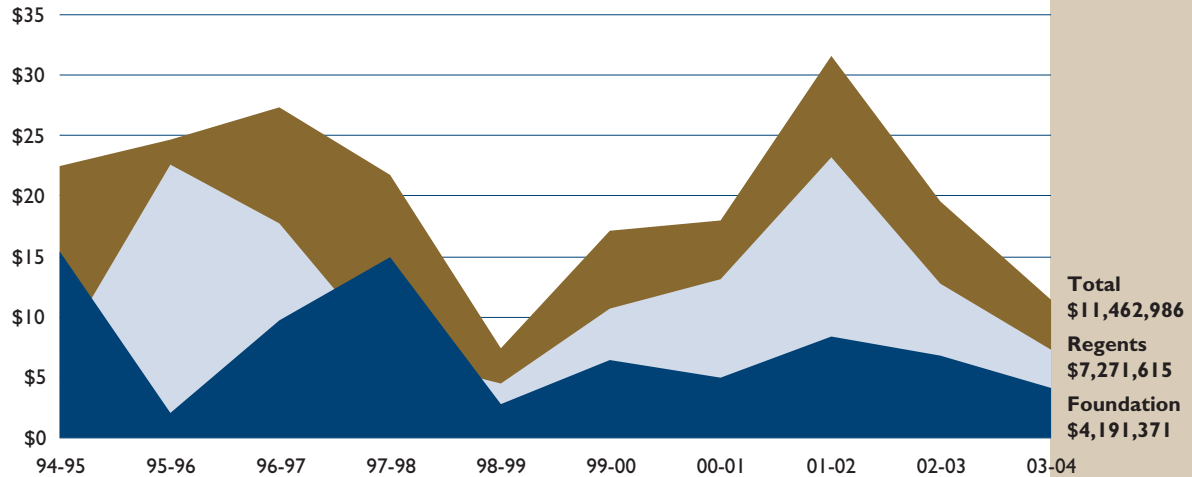
The campaign got off to an excellent start at UCR's "Evening of Recognition," with more than 50 major gift donors, many of them UCR Foundation trustees, formalizing their campaign gifts and pledges. More than sixty percent of the \$50 million goal has been raised. Moreover, a matching gift challenge issued by the UCR Foundation Board of Trustees secured more than \$140,000 in new and increased gifts from UCR alumni in two and one-half months.

More than 400 UCR alumni were acquired as new donors while an additional 100 alumni donors made increased gifts and pledges in response to the challenge. This year, more than 80 percent of UCR Trustees participated in UCR's Chancellor's Associates program as well, as compared with 49 percent in 2002-03.

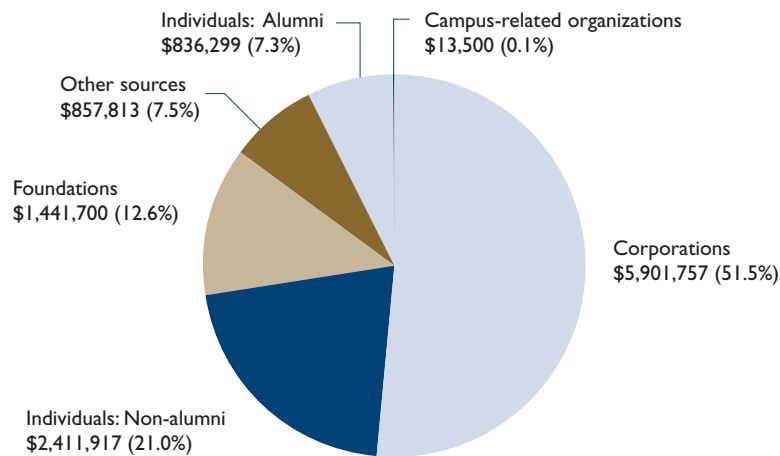
This year, the campus established the Edward Blakely Center for Sustainable Suburban Development to provide research and analysis with a policy focus on the wide range of issues that challenge suburbs. The center will be rooted in its locale – Southern California and the Inland region offer an unrivaled laboratory for studying issues relating to suburban growth and development. Inland Southern California serves as a great release valve for the expanding economies of Los Angeles and Orange counties.

REPORTING CONVENTIONS	99-00	00-01	01-02	02-03	03-04	03-04 TOTALS
<b>ACCRUAL (REGENTS)</b>						
New Pledges	\$7,469,109	\$1,102,720	\$5,541,227	\$6,120,621	\$1,269,777	\$11,462,986
New Outright Gifts	\$9,295,747	\$17,897,899	\$25,989,900	\$13,407,474	\$10,193,209	
Pledge Payments	\$2,774,476	\$1,102,720	\$4,276,900	\$2,627,463	\$7,030,277	\$17,223,485
<b>CASH (CAE)</b>						

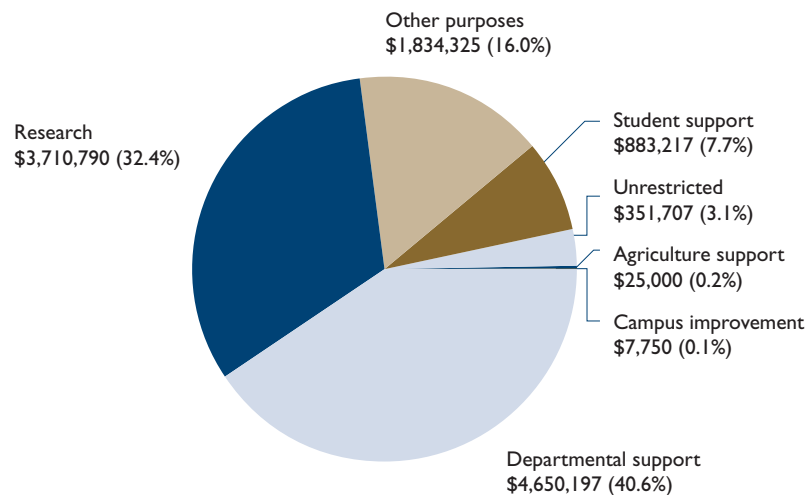
## TOTAL GIVING (\$ MILLIONS)



## GIFT SOURCE



## GIFT PURPOSE



Private support for UC San Diego in 2003-04 amounted to \$131.9 million, making it the second most successful year in the history of the campus. (In fiscal year 1999-2000, the campus received \$135 million in private support.)

Additionally, in October 2003, The Campaign for UCSD: *Imagine What's Next*, the campus's first comprehensive campaign, surpassed the halfway mark. This \$1 billion fundraising initiative was publicly launched March 15, 2003, and had been in a quiet phase since July 2000. Gifts and pledges to the campaign totaled \$606.8 million as of June 30, 2004. The campaign is scheduled to conclude July 2007.

"This remarkable support from friends and alumni arises from a growing awareness that a gift to UCSD will result in a substantial educational, cultural and economic return to the San Diego community and beyond," said James M. Langley, vice chancellor of external relations. "Their support and commitment to UCSD is what allows this institution to continue its rapid rise as one of the top universities in the country."

This year's success toward the campaign goal was highlighted by a \$30 million pledge from Ernest Rady and the Rady Family Foundation to name the Rady School of Management, the largest naming gift in university history, and the recent completion of commitments for two multi-year capital fundraising initiatives. The capital initiatives include \$30 million to fund the construction of the UCSD Cardiovascular Center and expansion of the John M. and Sally B. Thornton Hospital and \$7.2 million toward the construction of the Robert Paine Scripps Forum for Science, Society and the Environment at the Scripps Institution of Oceanography.

Other groundbreaking highlights developed among the private support received during 2003-04 are:

- A gift of \$7.5 million to create the Kavli Institute for Brain and Mind at UCSD from Fred Kavli and the Kavli Foundation.
- A \$5 million gift from Carol and William Stensrud to support the Rady School of Management.
- Gifts totaling \$18.3 million, a portion of a \$110 million planned gift announced in March 2003, from Joan and Irwin Jacobs to the Jacobs School of Engineering.
- Other leadership gifts this year include: \$4.9 million transferred from the La Jolla Playhouse toward UCSD's La Jolla Playhouse Development and Education Center; \$4.75 million from the Swartz Foundation to the Swartz Center for Computational Neuroscience; \$2 million from Tatiana Lansche and the Lansche family to establish the Dr. Richard and Tatiana Lansche Distinguished Chair in Ophthalmology at the Shiley Eye Center; and \$1.38 million from the Agouron Institute supporting biological and physical sciences.

Campaign initiatives fall within a framework of five main categories for support:

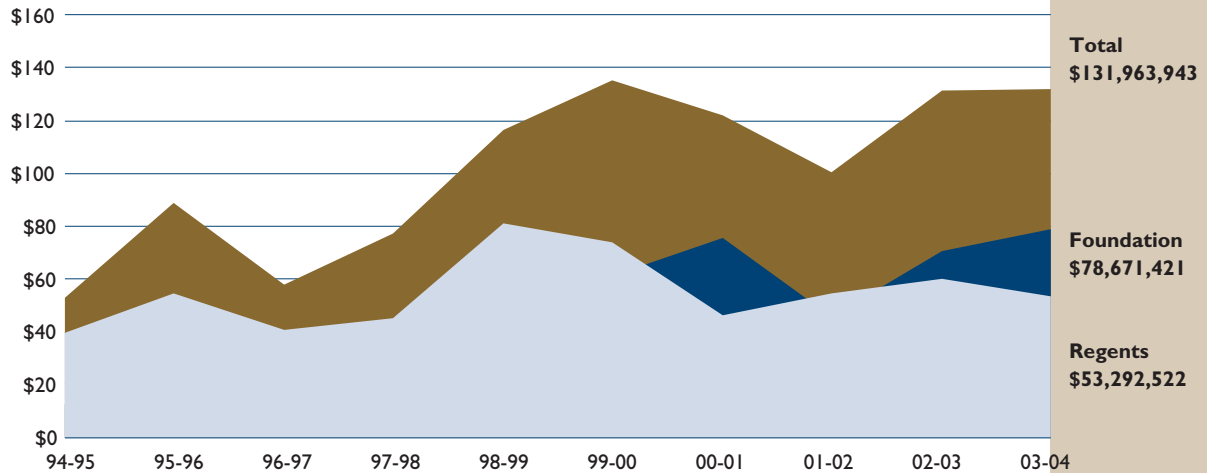
- Ensuring educational opportunity and enriching student life: \$67 million raised as of June 30, 2004, toward a \$100 million goal.
- Supporting outstanding faculty: \$38.7 million raised as of June 30 toward a \$100 million goal.
- Advancing academic excellence and launching inventive programs: \$209.3 million raised as of June 30 toward a \$300 million goal.
- Improving lives through research and health care: \$202.8 million raised as of June 30 toward a \$400 million goal.
- Strengthening innovation funds: \$89 million raised as of June 30 toward a \$100 million goal.

REPORTING CONVENTIONS

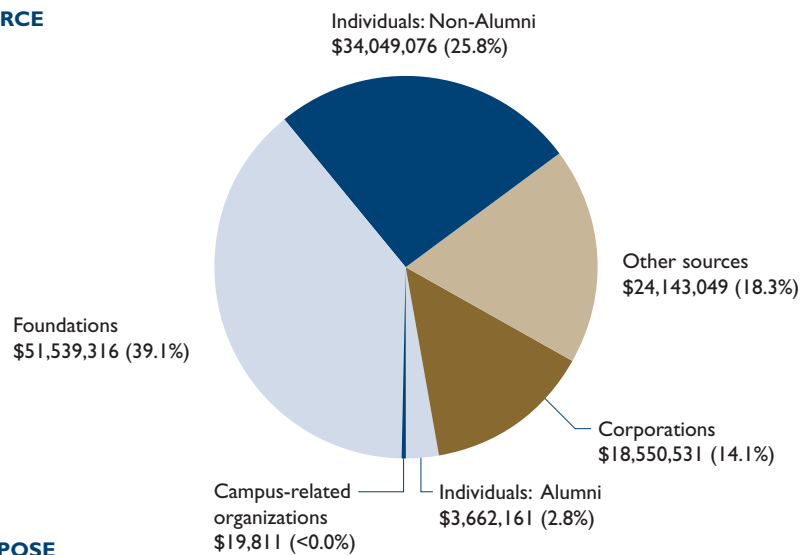
	99-00	00-01	01-02	02-03	03-04	03-04 TOTALS
<b>ACCURAL (REGENTS)</b>						
New Pledges	\$25,550,586	\$48,820,070	\$23,373,853	\$15,717,217	\$42,949,751	\$131,963,943
New Outright Gifts	\$117,061,649	\$74,138,142	\$77,851,264	\$115,385,646	\$89,014,192	
Pledge Payments	\$13,783,234	\$22,898,883	\$21,176,904	\$21,652,886	\$22,576,808	\$111,591,000

## SAN DIEGO

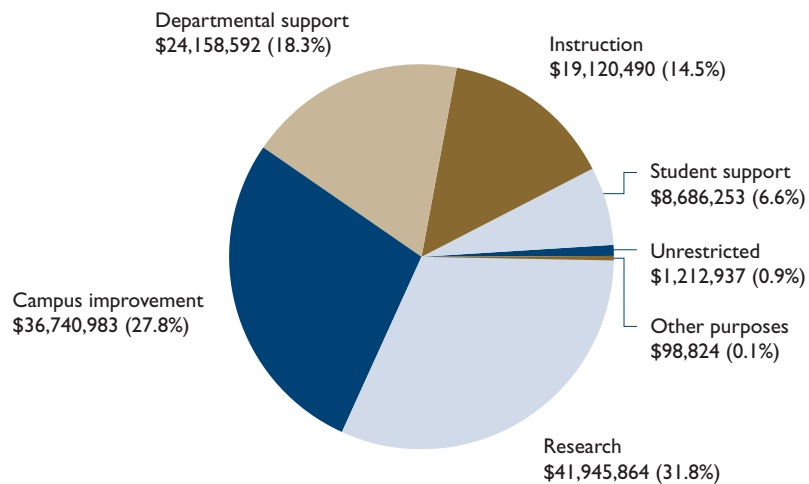
### TOTAL GIVING (\$ MILLIONS)



### GIFT SOURCE



### GIFT PURPOSE



The 2003-04 academic year proved to be the second most successful fundraising year in UCSF history and the fifth consecutive year in which private support surpassed \$200 million. A total of \$253,703,087 was reached through 32,142 contributions from 24,539 donors – increases from the previous year of 15.4 percent and 9.4 percent in gifts and donors, respectively.

At fiscal year end, \$1.385 billion had been raised toward the \$1.4 billion goal of the Campaign for UCSF, with one year remaining in this seven-year effort. Numerous donors demonstrated their support for the institution by making significant commitments to campaign priorities.

The Grove Stem Cell Challenge issued by Andrew S. Grove, Chairman of Intel Corp. and National Chair of the Campaign for UCSF, exceeded its goal by netting more than \$12 million to support stem cell research at UCSF. Warren E. Buffet contributed \$6.4 million to head and neck cancer programs in the Schools of Medicine and Dentistry. The School of Pharmacy received a \$5 million bequest from the estate of alumnus Carl Lovotti, the largest planned gift in the school's history.

Arthur and Toni Rembe Rock contributed \$25 million to help construct the university's new Mission Bay campus and to endow a distinguished professorship for Chancellor J. Michael Bishop, M.D. The first of its kind in the UC system, this unique chancellorial professorship will be passed on to future UCSF chancellors.

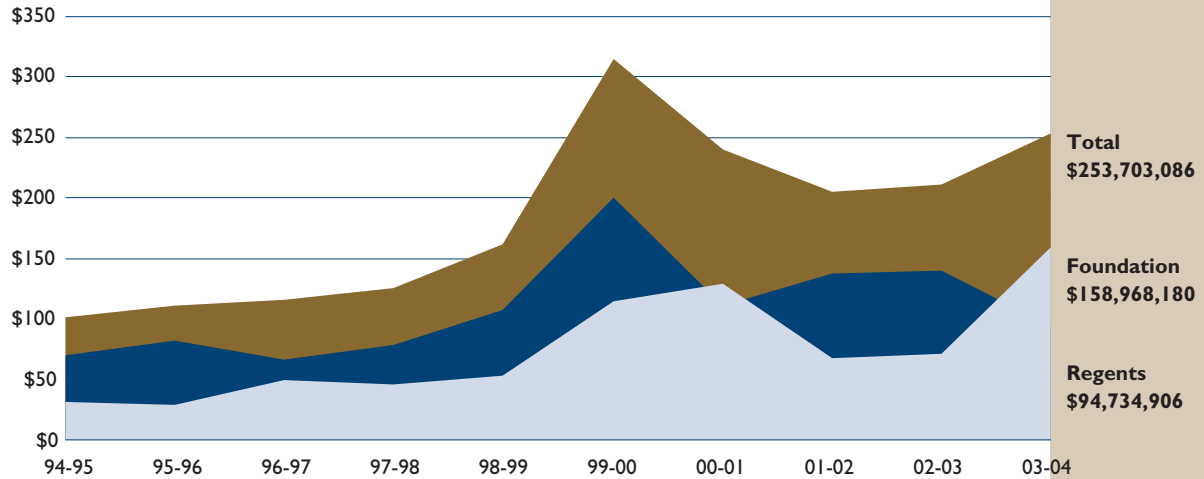
Another extraordinary gift was made by the Helen Diller family, whose \$35 million contribution is the largest gift from individual donors ever received by the campus. The contribution will support construction of a state-of-the-art cancer research building at Mission Bay. The Atlantic Philanthropies pledged an additional \$20 million to the cancer facility.

The development of UCSF Mission Bay is progressing at a rapid pace, with a second research building completed in February 2004 and the new California Institute for Quantitative Biomedical Research scheduled to open in February 2005. A community center, 600-space parking structure and campus residential complex are also expected to open in 2005.

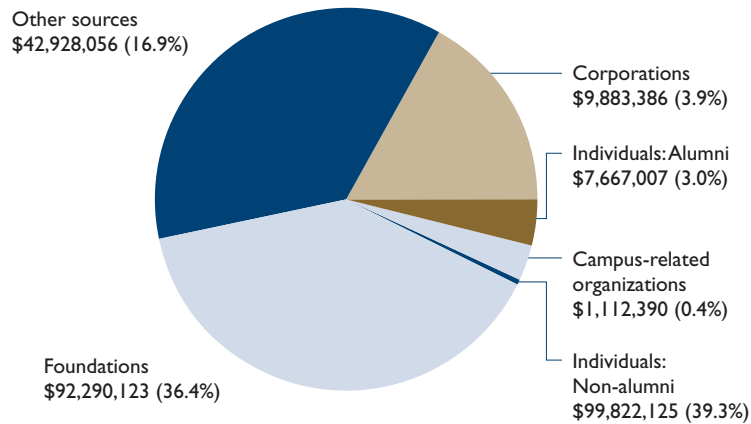
REPORTING CONVENTIONS	99-00	00-01	01-02	02-03	03-04	03-04 TOTALS
<b>ACCURAL (REGENTS)</b>						
New Pledges	\$124,016,571	\$79,406,446	\$36,194,039	\$33,087,642	\$100,811,917	\$253,703,086
New Outright Gifts	\$191,531,093	\$160,547,864	\$168,873,610	\$177,651,058	\$152,891,169	
Pledge Payments	\$27,267,970	\$110,827,703	\$38,351,907	\$47,946,084	\$64,755,711	\$217,646,881
<b>CASH (CAE)</b>						

## SAN FRANCISCO

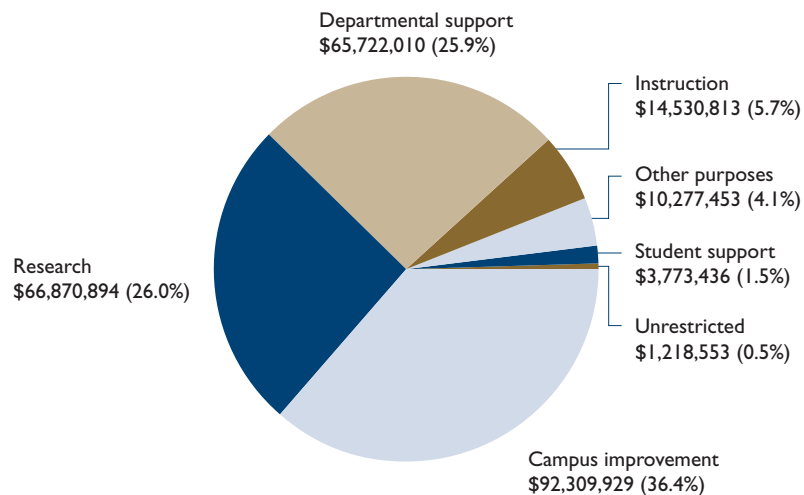
### TOTAL GIVING (\$ MILLIONS)



### GIFT SOURCE



### GIFT PURPOSE



Alumni and friends of UC Santa Barbara contributed a record \$80 million in private support in 2003-04 for teaching, research and programmatic support. The year was the most successful ever for the campus, surpassing the fundraising achievement of the previous year by more than \$30 million.

“This record level of philanthropic gifts reflects the continuous rise in stature of our campus and the superb quality and hard work of our top-notch faculty, bright students, dedicated staff, and loyal alumni, as well as the shared vision and dedication of our generous supporters,” said UCSB Chancellor Henry T. Yang.

The campus received a total of 21,895 gifts, up more than 30 percent from the previous year.

Private gifts for campus building projects also increased. The Samuel B. and Margaret C. Mosher Foundation contributed \$3 million toward the construction of the Mosher Alumni House. In addition, leadership gifts for a Center for Film, Television and New Media included \$2 million from Joseph and Helene Pollock and their family foundation and \$1 million from Academy-Award winner and UCSB alumnus Michael Douglas.

A number of benefactors made permanent investments in UCSB's future in the form of endowments amounting to more than \$5.7 million. Investment income generated by endowment gifts provides ongoing funding for specific purposes designated by donors.

The campus established the Mitsubishi Chemical Corporation Chair in Functional Materials and the Alan J. Heeger Chair in Interdisciplinary Science. These prized academic positions enable the university to develop more fully a field of study by providing financial support for enhanced research and instruction. The Heeger chair is named in honor of the UCSB professor of physics and of materials who shared the Nobel Prize in chemistry in 2000. Of UCSB's five Nobel Laureates, Heeger is one of three UCSB professors who have won a Nobel in fields outside their primary disciplines. As Chancellor Yang has noted, pioneering work that cuts across the disciplines has become the hallmark of research at UCSB.

Other endowment gifts included \$1.1 million from the J. E. & Lillian Tipton Foundation to establish a visiting professorship in an area of religious studies, and a \$1 million bequest from William R. Moran, a noted discographer. His gift will ultimately establish the William R. Moran Recorded Sound Archive in Special Collections to support the ongoing work by the University Libraries to preserve and disseminate early sound recordings for use by scholars and enthusiasts. Earlier in the year, Moran also donated \$1.7 million to Special Collections to complete the Victor Project, a multi-volume encyclopedia cataloging the 1900-1950 recordings of the Victor Talking Machine Co.

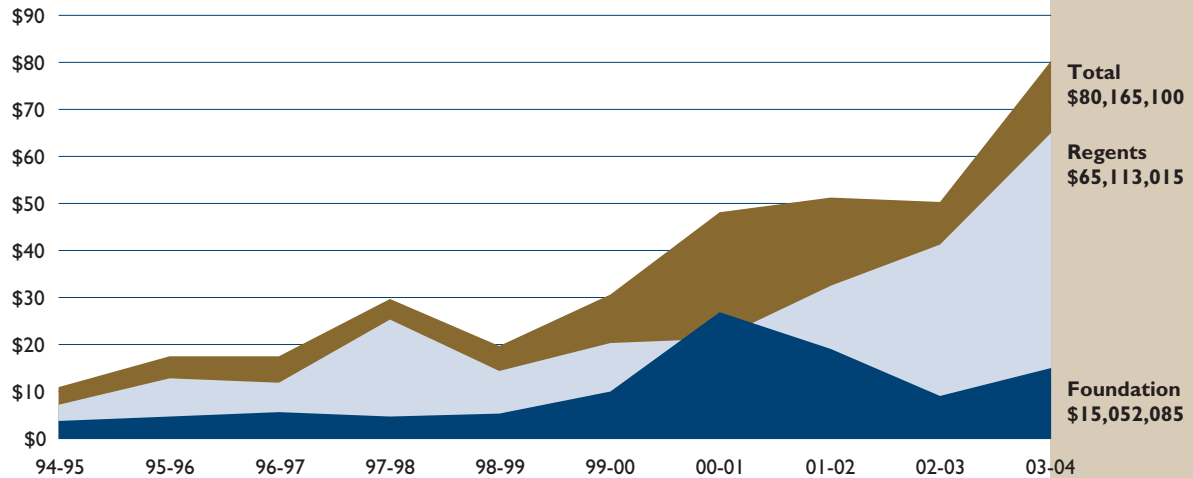
Corporate support for teaching, research and academic programs increased by nearly 40 percent to more than \$51 million. A number of sizable patent and equipment donations were received to enhance engineering research from W. L. Gore & Associates, Inc., and the Boeing Co. UCSB will continue to develop the technology for future commercialization and licensing.

Additional support for faculty research included \$1 million from Laurence O. Pilgeram for research on the biochemistry and molecular biology of aging, and \$1.2 million from the Andrew W. Mellon Foundation to advance the understanding of marine ecosystems along the West Coast.

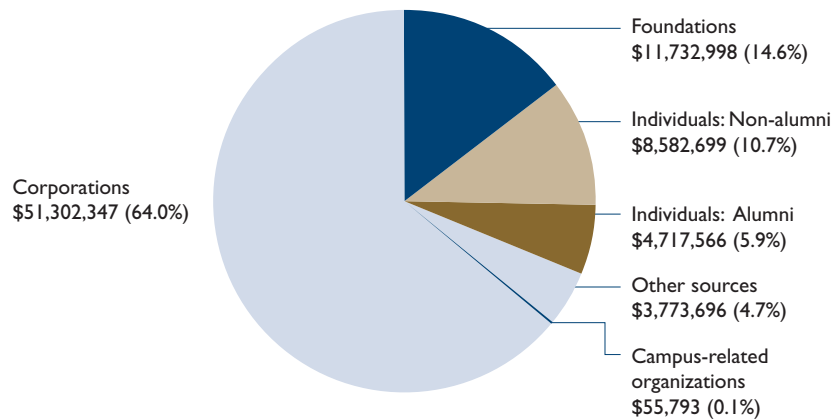
REPORTING CONVENTIONS	99-00	00-01	01-02	02-03	03-04	03-04 TOTALS
<b>ACCRUAL (REGENTS)</b>	<b>New Pledges</b>					
	\$12,924,576	\$27,288,168	\$35,892,546	\$7,294,964	\$17,978,137	\$80,164,100
	<b>New Outright Gifts</b>					
	\$17,639,903	\$20,742,429	\$15,469,747	\$43,092,827	\$62,186,963	
<b>CASH (CAE)</b>	<b>Pledge Payments</b>					
	\$8,704,343	\$11,582,046	\$11,250,502	\$18,975,689	\$14,028,177	\$76,215,140

## SANTA BARBARA

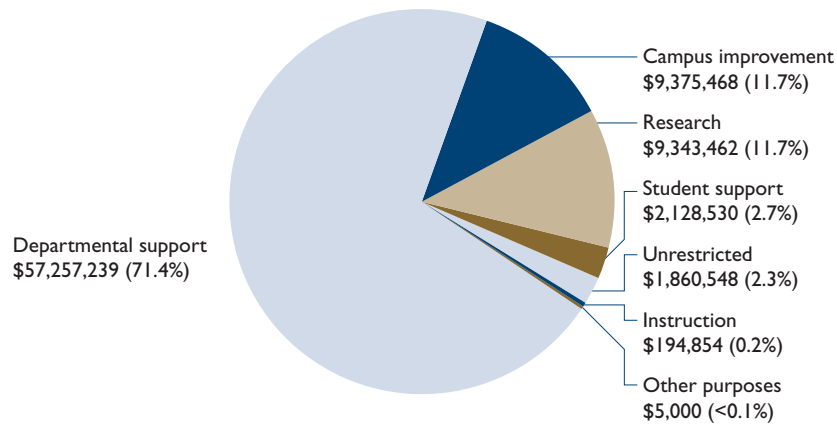
### TOTAL GIVING (\$ MILLIONS)



### GIFT SOURCE



### GIFT PURPOSE





UC Santa Cruz raised a record \$32.2 million from private sources in 2003-04, an increase of 42 percent from the \$22.7 million raised the year before.

"This record level of support for UC Santa Cruz could not have come at a more critical time," said Martin M. Chemers, who is serving as acting chancellor. "It will be invaluable in building on campus achievements in cutting-edge research and undergraduate teaching."

The largest single contribution was a \$17.5 million grant from the Gordon and Betty Moore Foundation, part of a University of California-California Institute of Technology project to build the world's most powerful telescope. Known as the Thirty-Meter Telescope, it will provide images more than 12 times sharper than those of the Hubble Space Telescope and have nine times the light-gathering ability of one of the 10-meter Keck Telescopes, currently the largest in the world.

The largest gift ever for scholarships in UCSC's Baskin School of Engineering was made in memory of software engineer and alumna Amy Snader, who died in a hiking accident. The estate of Barbara Snader, Amy Snader's mother, donated \$1 million to the Amy Beth Snader Memorial Scholarship Fund, established in 1997, to benefit women studying engineering.

The New Teacher Center's focus on programs for new teachers and administrators drew grants from many sources. Grants totaling \$700,000 from the William and Flora Hewlett Foundation and \$587,408 from the Stupski Family Foundation were among the awards.

A long-term collaborative research project involving the study and monitoring of coastal ecosystems continued to receive funding from the David and Lucile Packard Foundation. The foundation augmented its original grant – involving four major universities in California and Oregon – with \$1.1 million for UC Santa Cruz. Called the Partnership for Interdisciplinary Studies of Coastal Oceans, the project focuses on connections among the nearshore biological communities along 1,200 miles of coastline from southern California to Oregon.

"We raised \$32 million this year due to the world-class excellence of our faculty and inspiration of our students, fueled by the leadership of Chancellor M.R.C. Greenwood, Acting Chancellor Chemers, and our deans," said Ronald P. Suduiko, Vice Chancellor of University Relations. "We will build upon this success by launching a public fundraising campaign in the fall, with an emphasis on scholarships and graduate fellowships."

Called the Cornerstone Campaign, the \$50 million, two-year campaign will focus on student support. Through this targeted fundraising effort, endowments and current-use funds for scholarships and graduate fellowships will be substantially enhanced.

Efforts to increase scholarship funding are already under way: The campus's first Scholarships Benefit Dinner in the fall of 2003 raised more than \$500,000 to support undergraduate scholarships and graduate fellowships.

Individual donors continued to provide crucial support in 2003-04. The Telephone Outreach Program raised a record \$1.16 million from alumni and parents of students, and UC Santa Cruz Foundation trustees contributed \$467,874. Alumni celebrating five-year through 35-year reunions raised more than \$245,000 to support campus programs, and the Alumni Association Scholarship Fund raised \$109,130.

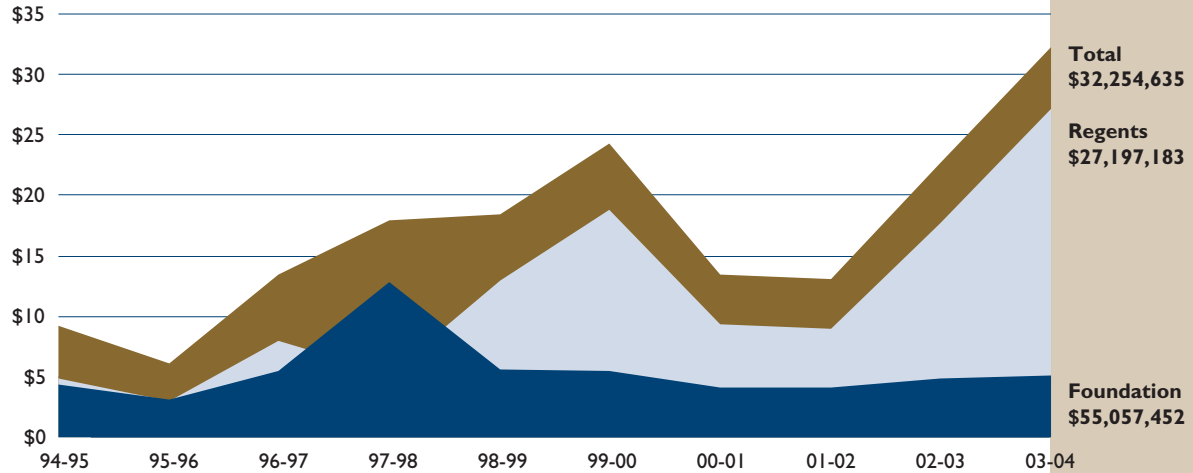
REPORTING CONVENTIONS

ACCURAL (REGENTS)

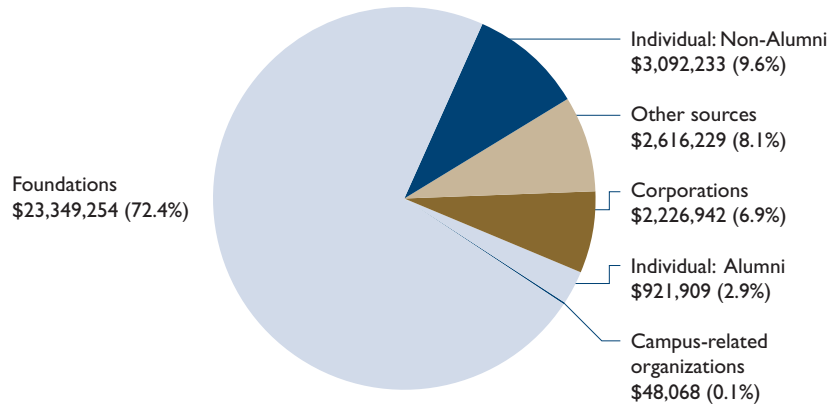
CASH (CAE)

	99-00	00-01	01-02	02-03	03-04	03-04 TOTALS
New Pledges	\$12,278,321	\$4,636,889	\$1,900,497	\$12,539,854	\$18,933,640	\$32,254,635
New Outright Gifts	\$12,098,754	\$8,868,696	\$11,556,413	\$10,120,551	\$13,320,995	
Pledge Payments	\$3,576,193	\$4,801,001	\$2,383,751	\$8,069,604	\$1,776,951	\$15,097,946

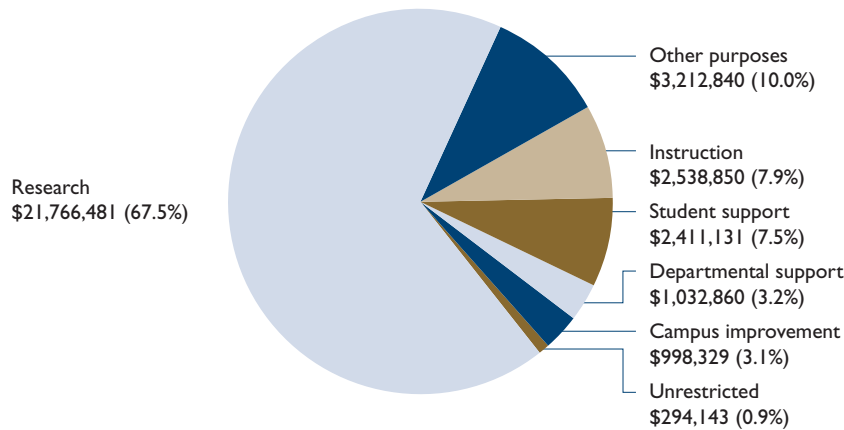
## TOTAL GIVING (\$ MILLIONS)



## GIFT SOURCE



## GIFT PURPOSE



## UNIVERSITYWIDE AND MULTI-CAMPUS PROGRAMS

## THE CAMPUSES 2003-04

The Universitywide programs include multi-campus research units; the three national laboratories that UC manages under contract with the federal government; the Mathematics, Engineering, Science Achievement (MESA) student outreach program; the Puente Project, another important and successful outreach for students statewide; the Education Abroad Program; and the University of California Press. The programs also include COSMOS (California State Summer School for Math Sciences), a summer residency program for 9th through 12th grade students with exceptional aptitude in math and science.

Multi-campus research units include the Humanities Research Institute, and the state funded Breast Cancer Research and Tobacco Research Programs, among others.

The U.S. Department of Energy national laboratories include the E. O. Lawrence Berkeley National Laboratory and the Lawrence Livermore National Laboratory in California, and the Los Alamos National Laboratory in New Mexico.

The MESA program assists educationally disadvantaged students at pre-college, community college and university levels to excel in math and science and ultimately to attain degrees in math-based fields.

The Puente Project has helped tens of thousands of educationally under-served students to succeed in college through its innovative combination of accelerated writing instruction, academic counseling and mentoring by community professionals. In California, Puente is located in 54 community colleges and 35 high schools. Its goal is to prepare and enroll students in four-year institutions such as UC.

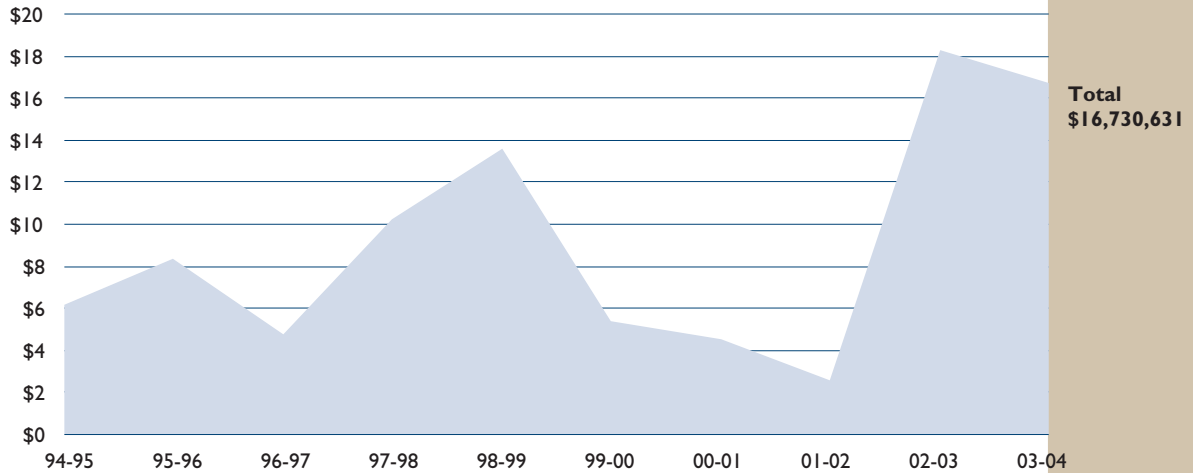
The Education Abroad Program provides foreign study for over 4,200 students at more than 150 institutions in 35 countries. In most cases, UC students are fully integrated into the academic curriculum of the foreign host university, and UC students study alongside their native counterparts. Through its exchanges, partnerships and initiatives, EAP expands the scope of education at UC by giving students access to the vast new sources of knowledge available worldwide, to special pedagogical methods and field study opportunities, and to widely varying cultural, social, political and economic environments.

University of California Press, the nonprofit publishing arm of UC, is one of the nation's largest university publishers. It has earned worldwide recognition for its innovative titles and excellence in book design and production. Each year, it publishes 180 new clothbound books, 90 paperback books and 33 scholarly journals. Approximately one-third of its books are written by UC faculty.

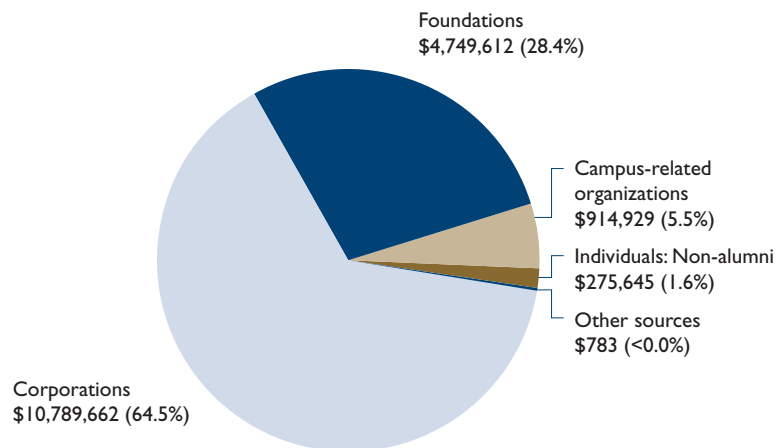
REPORTING CONVENTIONS	99-00	00-01	01-02	02-03	03-04	03-04 TOTALS
<b>ACCURAL (REGENTS)</b>						
New Pledges	\$371,000	\$1,623,528	\$61,300	\$369,403	\$746,500	\$16,730,631
New Outright Gifts	\$5,016,905	\$2,918,936	\$2,485,244	\$17,926,526	\$15,984,131	
<b>CASH (CAE)</b>						
Pledge Payments	\$0	\$950	\$462,050	\$384,803	\$465,000	\$16,449,131

## UNIVERSITYWIDE AND MULTI-CAMPUS PROGRAMS

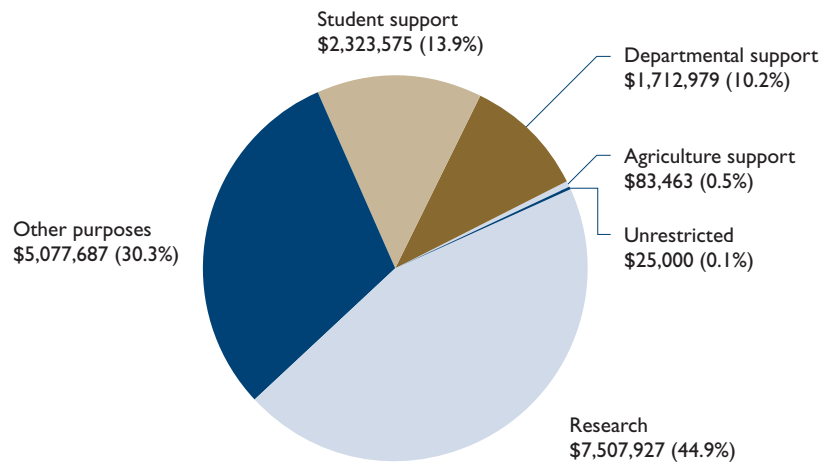
### TOTAL GIVING (\$ MILLIONS)



### GIFT SOURCE



### GIFT PURPOSE



# PRIVATE SUPPORT

## Campus Foundation Leadership

---

### UC BERKELEY FOUNDATION

Website: [www.urel.berkeley.edu/foundation/](http://www.urel.berkeley.edu/foundation/)

#### Executive Officers

Chair: Dwight L. Barker '59, Orinda  
Vice Chair: Robert G. O'Donnell '65, M.B.A. '66, Atherton  
Chair-Finance Committee: William F. Ausfahl '61, Moraga  
Vice Chair-Finance Committee: Cheryl Ann Valentine '79, M.B.A. '91, Walnut Creek  
Chair-Investment Committee: Robert B. Beim '66, Atherton  
Chair-Governance Committee: Charlene Conrad Liebau '60, San Marino  
Vice Chair-Governance Committee: Grant N. Inman M.B.A. '69, Orinda  
Chair-Programs Committee: Kathleen G. Correia '76, Lafayette  
Vice Chair-Programs Committee: Rick J. Holmstrom M.B.A. '98, Palo Alto  
Immediate Past UCBF Chair: Nadine M. Tang '75, Kensington

#### Administrative Officers

President: Donald A. McQuade, Vice Chancellor-University Relations  
Vice President: F. Scott Biddy, Associate Vice Chancellor-University Relations  
Secretary: Jenny Hanson, Executive Assistant to the Vice Chancellor-University Relations  
Assistant Secretary: Aileen K. Kim, Assistant to the Vice Chancellor-University Relations  
Interim Treasurer: Diane G. Katz, Interim Director-Financial Services  
Assistant Treasurer: Sylvia A. Worthington, Senior Security Analyst

### UC DAVIS FOUNDATION

Website: [www.development.ucdavis.edu/found/](http://www.development.ucdavis.edu/found/)

#### Executive Officers

Chair: Michael W. Chapman '58, Sacramento  
Vice Chair: Glenn Nedwin, Davis  
Chair-Finance & Investment Committee: Michael Child '76, Atherton  
Chair-Nominating Committee: Meg Stallard '68, Woodland  
Chair-Development Committee: Gerhard (Gerry) Parker, Los Gatos  
Chair-Audit Committee: J. Terry Eager, El Macero  
Ex-officio: Celeste E. Rose, Vice Chancellor-University Relations  
Executive Director: Cheryl Brown Lohs , Associate Vice Chancellor-University Relations and Development  
Chief Financial Officer: Rick Vorpe, Planned Giving Director

### UC IRVINE FOUNDATION

Website: [www.foundation.uci.edu](http://www.foundation.uci.edu)

#### Officers

Chair: Ted Smith  
Vice Chair, Finance & Investment: Rick Keller  
Vice Chair-Donor Relations: Martha F. Newkirk, Ph.D. '72, M.A. '76, Ph.D. '81  
Vice Chair-Major Gifts: Douglas K. Freeman  
Vice Chair-Nomination & Board Development: Jack Norberg  
Vice Chair-Public Advocacy & Community Relations: Timothy L. Strader, Sr.  
General Counsel: Paul Frederic Marx  
President: Thomas J. Mitchell, Vice Chancellor, University Advancement  
Chief Financial Officer: Lynn Rahn, Executive Director- Business & Finance, University Advancement  
Secretary: Margie Jacobs, UCI Foundation Liaison, University Advancement

### UC LOS ANGELES FOUNDATION

Website: [www.Foundation.UCLA.edu](http://www.Foundation.UCLA.edu)

#### Executive Officers

President: Herbert G. Kawahara '51 BS, Rolling Hills Estates  
Chair: Peter J. Taylor '80, Los Angeles  
Immediate Past Chair: Keenan Behrle '69 JD, Los Angeles  
Chair-Campaign UCLA: Robert S. Wilson '53 BS, Rancho Santa Fe  
Executive Vice President: Michael C. Eicher, Vice Chancellor-External Affairs  
Vice President-Development: Dennis Slon, Associate Vice Chancellor-Development  
Vice President-Finance & Treasurer: Neal D. Axelrod, Assistant Vice Chancellor-Finance & Information Management '76  
Executive Director & Secretary: Peter A. Hayashida, Assistant Vice Chancellor-External Affairs '88

# PRIVATE SUPPORT

## Campus Foundation Leadership

---

### UC MERCED FOUNDATION

Website: [www.ucmerced.edu/about\\_merced/leadership.asp](http://www.ucmerced.edu/about_merced/leadership.asp)

#### Executive Officers

Chair: John Garamendi, Walnut Grove  
Vice Chair: Bob Carpenter, Merced  
Secretary: Lazar Piro, Turlock  
Treasurer/Finance Committee Chair: JoAnn Bertges, San Francisco  
Corporate President: Carol Tomlinson-Keasey, Chancellor  
Corporate Vice President/Executive Director: Esteban Soriano, Vice Chancellor-University Advancement

### UC RIVERSIDE FOUNDATION

Website: [www.foundation.ucr.edu](http://www.foundation.ucr.edu)

#### Executive Officers

Chair: Amy S. Harrison '72, Grand Terrace  
Vice Chair: Open  
Treasurer: James A. Robinson, Riverside  
Immediate Past Chair: Henry W. Coil, Riverside  
President: William G. Boldt, Vice Chancellor-University Advancement  
Executive Director: Georgia Elliott, Acting Associate Vice Chancellor  
Secretary: Judith Lehr, Director-Research & Writing  
Associate Treasurer: Elizabeth Wottring-Gonzales, Director-University Advancement Finance & Administration

### UC SAN DIEGO FOUNDATION

Website: [www-er.ucsd.edu/ucsdfoundation](http://www-er.ucsd.edu/ucsdfoundation)

#### Executive Officers

Chair: Ronald R. Taylor, San Diego  
Vice Chair: John Cambon, '74, San Diego  
Vice Chair: Anne L. Evans, San Diego  
Treasurer: Arthur Brody, San Diego

#### Operating Officers

Chancellor: Marye Anne Fox  
President: James M. Langley, Vice Chancellor-External Relations  
Assistant Treasurer: Steven W. Relyea, Vice Chancellor-Business Affairs

### UC SAN FRANCISCO FOUNDATION

Website: [www.ucsf.edu/foundation/](http://www.ucsf.edu/foundation/)

#### Executive Officers

Chair: Barbara Bass Bakar, San Francisco  
Vice Chair: William E. Oberndorf, San Francisco  
President: J. Michael Bishop, MD, Chancellor  
Executive Vice President: Bruce W. Spaulding, Vice Chancellor-University Advancement & Planning  
Treasurer: Steve Barclay, Vice Chancellor-Administration & Finance  
Secretary: Michael D. Irwin, Executive Director-Financial Services Administration

### UC SANTA BARBARA FOUNDATION

#### Foundation Officers

Chair: Steven C. Mendell '63  
Past Chair: Mark A. Bertelsen '66  
Vice Chair-Finance & Treasurer: William S. "Tom" Thomas Jr.  
Vice Chair-Development: Stephen E. Cooper '68  
Vice Chair-Stewardship: Kathryn D. McKee '59  
Secretary: Susan Worster '70  
Executive Director: Gary A. Greinke, Associate Vice Chancellor  
Chief Financial Officer: Eric J. Sonquist, Director-Finance & Administration

### UC SANTA CRUZ FOUNDATION

Website: [www.ucsc.edu/administration/ur/foundation/](http://www.ucsc.edu/administration/ur/foundation/)

#### Executive Officers

President: Kenneth A. Feingold '71, Santa Monica  
Vice President: Anuradhu Luther Maitra, Saratoga  
Parliamentarian: Timothy J. Morgan '70, Santa Cruz

#### Administrative Officers

Executive Secretary: Ronald P. Suduiko, Vice Chancellor-University Relations  
Treasurer: Thomas M. Vani, Vice Chancellor-Business & Administrative Services  
Assistant Treasurer: William L. Jump, Controller-University Relations

# PRIVATE SUPPORT

## Glossary

---

### **Gift data**

The gift data included in the Annual Report on the University Private Support Program are compiled using the UC system convention for gift reporting (i.e., includes pledges when made, not paid; outright gifts and private grants, not contracts; and gifts from foreign sources).

### **Regents**

The Board of Regents of the University of California is the corporate body entrusted by the enabling legislation with the University's organization and administration.

### **Campus foundations**

Campus foundations, originally established at the Los Angeles campus in 1945 and the Berkeley campus in 1948 as alumni foundations to secure private support for student aid, are independently incorporated as non-profit, public benefit corporations. They serve as the primary fundraising arm for their respective campuses. The strength of the foundations rests with the direction provided by their community-based volunteer trustees. Each foundation is staffed by University personnel. They are located on each campus.

## **SOURCES OF GIFTS**

This category identifies the original source of gifts and grants to The Regents and the campus foundations.

### **INDIVIDUALS**

#### **Alumni**

Alumni are defined as former undergraduate or graduate students, full- or part-time, who have earned some credit toward a degree offered by a particular campus of the University of California.

#### **Individuals (non-alumni)**

All individual donors who are not alumni are covered by this classification, including: parents, faculty, staff, and trustees.

### **ORGANIZATIONS**

#### **Campus-related organizations**

This classification covers student groups, alumni associations, and University support groups, but not campus foundations. A transfer to The Regents from a campus foundation is reported in the classification appropriate to the original donor when the gift was received by the campus foundation.

### **Corporations**

This classification covers both for-profit entities and non-profit entities that are funded by for-profit entities.

For-profit entities are defined as corporations, businesses, partnerships, and cooperatives that have been organized for profit-making purposes, including corporations owned by individuals and families, incorporated professional individuals, and other closely-held companies.

Examples of non-profit entities that are funded by for-profit entities include: industry or trade associations; professional, union, or lobbying organizations; and non-profit organizations funded by one or more companies or individuals operating for profit, including corporate foundations.

### **Foundations**

This classification covers private tax-exempt entities established and operated exclusively for charitable purposes; non-profit foundations or charitable trusts, including funds or endowments designated by the Internal Revenue Service as grant-making foundations; community foundations; family foundations; or charitable trusts. This classification excludes corporate foundations (which are classified as for-profit entities), campus foundations or quasi-government entities such as the National Endowment for the Humanities.

### **Other sources**

This classification covers all non-profit organizations other than those described above, including fundraising consortia, religious organizations, and higher educational institutions or associations.

## **PURPOSES OF GIFTS**

This category identifies the intended use of private support as designated by the donor or grantor.

### **Research**

This classification applies to private support that is restricted to scientific, technical and humanistic investigation, including salaries and other support of research projects.

### **Student support**

This classification includes support that is restricted to non-repayable financial aid to undergraduate or graduate students, including scholarships, fellowships, awards, prizes, and private support for work-study students, as well as gift funds to support loans to be repaid by undergraduate and graduate students.



# PRIVATE SUPPORT

## Glossary

---

### **Instruction**

This classification is restricted to support for seminars, conferences, lecture programs, and teaching awards, including salaries, honoraria and employee benefits.

### **Campus improvement**

This classification includes support for ongoing operation of the physical plant, including its buildings and grounds, other facilities, and equipment. It also includes gifts and private grants of real and personal property, including equipment and works of art for use by the University. It also covers gifts and private grants that are restricted by the donor or grantor to purchase buildings, other facilities, equipment, and land for use by the University; or to construct or carry out major renovation of buildings and other facilities; or to retire indebtedness. In addition, the classification applies to gifts of library materials and monetary support that are restricted to acquire, restore, and preserve books, periodicals, manuscripts, maps, and related materials; to acquire audiovisual and other equipment; or to support other activities of campus libraries.

### **Departmental support**

This classification covers gifts that are restricted by the donor to a particular academic division, department or entity, but otherwise unrestricted. It also covers gifts that are restricted by the donor to a particular academic division, department or unit, and further restricted by the donor to a particular purpose for which no other purpose category is listed, including endowed chairs. In addition, it covers gifts and grants that have been given for support of agricultural research and public service, which the Berkeley, Davis and Riverside campuses and the system-wide office break out separately, but excludes instruction and student financial aid.

### **Agriculture support**

This classification is used by the Berkeley, Davis and Riverside campuses and the Office of the President only. It covers gifts and grants that have been given for support of agriculture research and public service, but excludes instruction and student financial aid.

### **Other purposes**

This classification covers support of non-instructional services beneficial to individuals and groups external to the University (e.g., exhibits, museums, patient care, public service, and similar facilities and programs); and gifts

restricted by the donor for endowment, which maintains the principal in perpetuity, but otherwise unrestricted by the donor as to use of the endowment income.

### **Unrestricted**

This classification includes gifts made by the donor for current use without restriction, regardless of any subsequent administrative designation or purpose.

## **TYPE OF ASSETS**

This category identifies the form (type of asset) of a gift at the time it is transferred to the University or the campus foundation.

### **Cash**

This classification covers currency, coins, checks, money orders, and bank drafts.

### **Securities**

This classification includes stocks, bonds, and related instruments such as promissory (mortgage) notes and insurance policies if maintained rather than surrendered for cash.

### **Real property**

This classification applies to real estate, including land, buildings, and other improvements; and to oil, mineral and related rights. Real property is reported at its fair market value.

### **Pledge**

This classification applies to the promise to make a gift or private grant, the amount of the gift or grant to be paid within five years by the donor, usually in installments.

### **Non-monetary items**

This classification applies to personal or company property (except securities and real property), including works of art, books, intellectual property, and scientific and other equipment. Non-monetary gifts are reported at their fair market value.



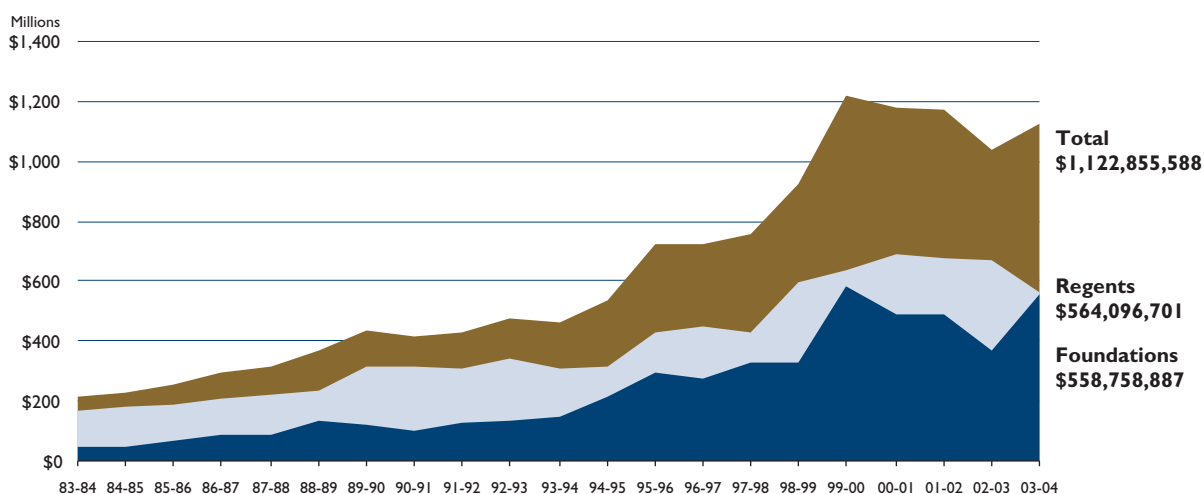
# PRIVATE SUPPORT

## Appendix I

### Private Support to the Regents and the Campus Foundations

1983-84 to 2003-04

Fiscal Years	Regents	Foundations	Totals
1983-1984	\$168,686,124	\$47,010,365	\$215,696,489
1984-1985	178,479,512	49,133,944	227,613,456
1985-1986	186,253,924	68,757,418	255,011,342
1986-1987	207,593,332	86,031,331	293,624,663
1987-1988	223,256,391	89,903,475	313,159,866
1988-1989	233,701,000	133,156,000	366,857,000
1989-1990	315,323,651	120,750,398	436,074,049
1990-1991	311,795,189	102,919,879	414,715,068
1991-1992	305,503,837	124,544,336	430,048,173
1992-1993	341,073,528	131,279,500	472,353,028
1993-1994	308,864,760	150,391,500	459,256,260
1994-1995	315,773,829	217,079,565	532,853,394
1995-1996	429,052,653	291,949,785	721,002,438
1996-1997	450,199,449	276,118,749	726,318,198
1997-1998	427,768,819	326,731,603	754,500,422
1998-1999	595,840,889	330,229,035	926,069,924
1999-2000	638,217,019	583,950,217	1,222,167,236
2000-2001	691,139,190	487,480,139	1,178,619,329
2001-2002	679,693,623	492,068,053	1,171,761,676
2002-2003	666,555,369	370,758,696	1,037,314,065
2003-2004	\$564,096,701	\$558,758,887	\$1,122,855,588



# PRIVATE SUPPORT

## Appendix II Totals for Gifts and Pledges

BERKELEY	Regents	Foundation	Total
1994-1995	81,026,533	75,059,341	156,085,874
1995-1996	112,114,655	76,819,873	188,934,528
1996-1997	115,924,899	66,503,031	182,427,930
1997-1998	107,792,918	66,444,170	174,237,088
1998-1999	164,095,171	57,605,864	221,701,035
1999-2000	136,624,495	64,737,343	201,361,838
2000-2001	241,235,905	74,086,442	315,322,347
2001-2002	176,768,164	63,649,236	240,417,400
2002-2003	112,742,177	51,113,057	163,855,234
2003-2004	101,424,466	72,764,015	174,188,481

DAVIS	Regents	Foundation	Total
1994-1995	30,888,864	10,624,937	41,513,801
1995-1996	51,485,649	7,946,743	59,432,392
1996-1997	35,327,053	8,815,495	44,142,548
1997-1998	36,912,732	15,191,582	52,104,314
1998-1999	53,912,431	9,749,898	63,662,329
1999-2000	55,850,099	16,380,453	72,230,552
2000-2001	58,661,631	18,690,926	77,352,557
2001-2002	56,779,883	53,235,548	110,015,431
2002-2003	52,005,765	19,704,722	71,710,487
2003-2004	55,020,595	18,385,457	73,406,052

IRVINE	Regents	Foundation	Total
1994-1995	13,517,932	8,131,772	21,649,704
1995-1996	12,400,546	13,206,160	25,606,706
1996-1997	14,205,593	15,980,561	30,186,154
1997-1998	12,502,888	26,332,212	38,835,100
1998-1999	27,359,702	22,185,857	49,545,559
1999-2000	23,530,837	64,354,184	87,885,021
2000-2001	19,889,875	32,150,903	52,040,805
2001-2002	15,735,989	19,890,374	35,626,363
2002-2003	31,092,582	26,218,625	57,311,207
2003-2004	24,224,419	42,122,309	66,346,728

LOS ANGELES	Regents	Foundation	Total
1994-1995	55,188,744	54,916,233	110,104,977
1995-1996	69,670,752	121,086,027	190,756,779
1996-1997	134,906,270	96,891,237	231,797,506
1997-1998	98,955,078	108,111,736	207,066,814
1998-1999	116,602,554	137,853,869	254,456,423
1999-2000	90,385,117	240,415,961	330,801,078
2000-2001	160,993,230	121,937,425	282,930,655
2001-2002	148,981,153	210,483,379	359,464,532
2002-2003	176,848,905	111,256,680	288,105,585
2003-2004	116,257,301	161,766,203	278,023,504

MERCED	Regents	Foundation	Total
1994-1995	n/a	n/a	n/a
1995-1996	n/a	n/a	n/a
1996-1997	n/a	n/a	n/a
1997-1998	n/a	n/a	n/a
1998-1999	10,000	n/a	10,000
1999-2000	1,592,153	n/a	1,592,153
2000-2001	5,038,993	n/a	5,038,993
2001-2002	22,234,843	n/a	22,234,843
2002-2003	3,457,791	159,979	3,617,770
2003-2004	2,830,048	1,780,394	4,610,442

RIVERSIDE	Regents	Foundation	Total
1994-1995	7,094,318	15,421,871	22,516,189
1995-1996	22,596,975	2,078,716	24,675,691
1996-1997	17,710,848	9,688,798	27,399,646
1997-1998	6,793,537	14,954,880	21,748,417
1998-1999	4,506,572	2,855,403	7,361,975
1999-2000	10,693,862	6,404,166	17,098,028
2000-2001	13,076,803	4,928,570	18,005,373
2001-2002	23,224,822	8,371,304	31,596,126
2002-2003	12,768,652	6,759,442	19,528,095
2003-2004	7,271,615	4,191,371	11,462,986

SAN DIEGO	Regents	Foundation	Total
1994-1995	39,819,272	12,911,301	52,730,573
1995-1996	54,475,569	34,322,666	88,798,235
1996-1997	40,956,531	17,178,541	58,135,072
1997-1998	45,243,617	32,188,946	77,432,563
1998-1999	80,848,581	35,481,507	116,330,088
1999-2000	73,975,115	61,392,612	135,367,727
2000-2001	46,387,460	75,510,302	121,897,762
2001-2002	54,775,888	45,595,640	100,371,528
2003-2004	60,254,688	70,848,176	131,102,864
2003-2004	53,292,522	78,671,421	131,963,943

SAN FRANCISCO	Regents	Foundation	Total
1994-1995	70,031,638	31,901,964	101,933,602
1995-1996	82,304,726	28,613,163	110,917,889
1996-1997	66,478,618	49,836,904	116,315,523
1997-1998	78,970,156	46,097,928	125,068,083
1998-1999	107,589,767	53,556,880	161,146,647
1999-2000	200,941,595	114,606,068	315,547,664
2000-2001	110,735,877	129,218,433	239,954,310
2001-2002	137,325,038	67,742,611	205,067,649
2002-2003	140,128,377	70,810,323	310,738,700
2003-2004	94,734,906	158,968,180	253,703,086

SANTA BARBARA	Regents	Foundation	Total
1994-1995	7,244,108	3,698,127	10,942,235
1995-1996	12,660,501	4,741,977	17,402,478
1996-1997	11,904,008	5,738,385	17,642,394
1997-1998	25,188,127	4,639,958	29,828,085
1998-1999	14,410,864	5,382,366	19,793,230
1999-2000	20,439,663	10,124,817	30,564,479
2000-2001	21,175,104	26,855,494	48,030,597
2001-2002	32,358,053	19,004,239	51,362,292
2002-2003	41,219,791	9,168,000	50,387,791
2003-2004	65,113,015	15,052,085	80,165,100

SANTA CRUZ	Regents	Foundation	Total
1994-1995	4,823,654	4,414,019	9,237,673
1995-1996	2,961,648	3,134,460	6,096,108
1996-1997	8,010,621	5,485,798	13,496,419
1997-1998	5,187,371	12,770,191	17,957,562
1998-1999	12,910,490	5,557,391	18,467,881
1999-2000	18,796,177	5,534,613	24,330,790
2000-2001	9,401,848	4,101,617	13,503,465
2001-2002	8,963,246	4,095,722	13,058,968
2002-2003	17,740,713	4,919,692	22,660,405
2003-2004	27,197,183	5,057,452	32,254,635