



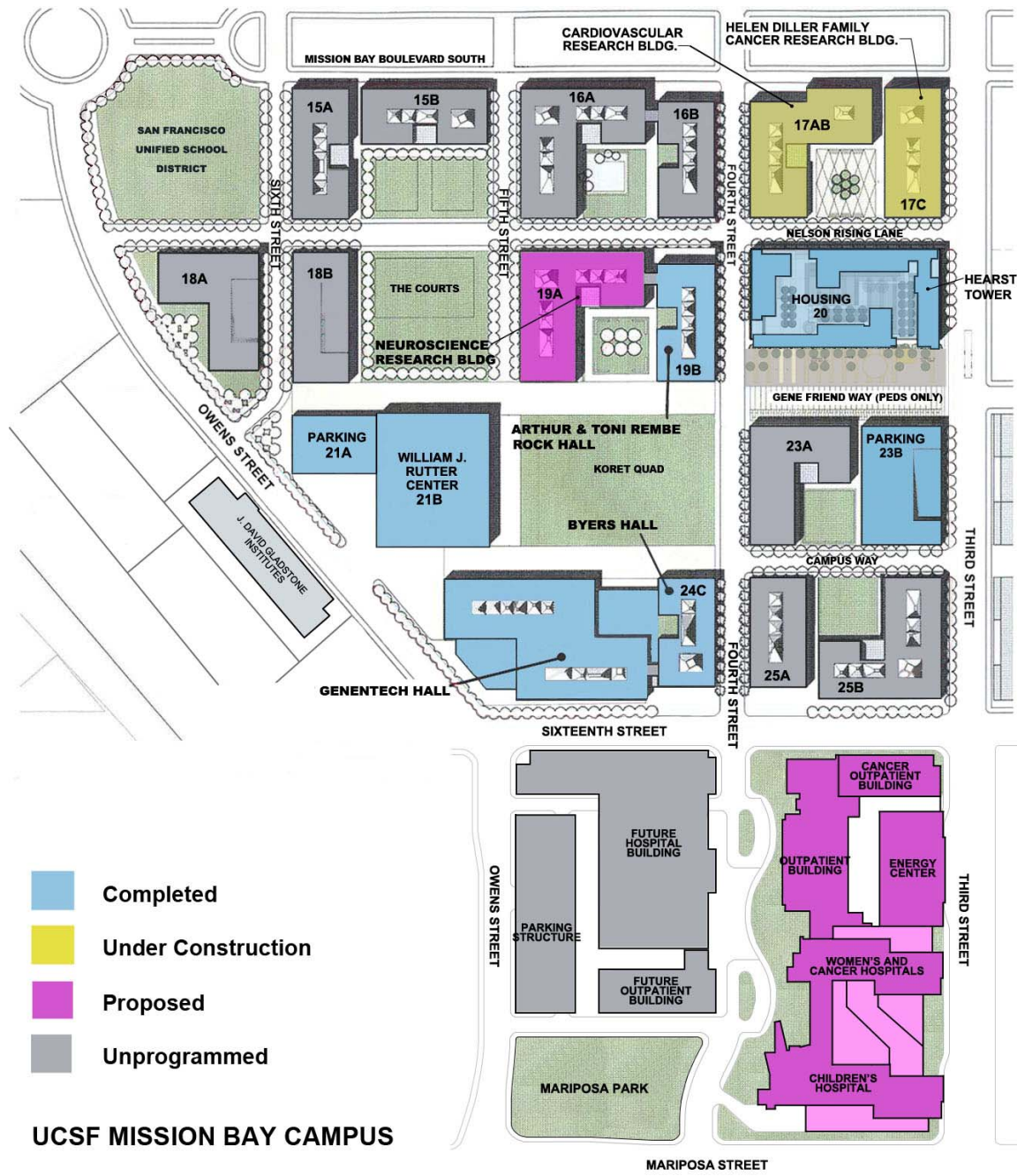
UCSF Mission Bay Neurosciences Building - 19A Proposed Design

Regents Grounds & Buildings Committee
February 3, 2009

Neurosciences Building (19A)

KEY BUILDING STATISTICS

- Five story, 235,000 GSF (160,800 ASF) building
- Wet laboratory, laboratory support, vivarium, clinical research and office uses
- 100 Principal Investigators
- Construction start October 2009; complete by June 2011
- Developer Team
 - Developer - Edgemoor/McCarthy Cook Partners
 - Architect - Skidmore, Owings & Merrill
 - General Contractor - Clark Construction
 - Property Management - McCarthy Cook





COLLEGIALITY AND CONNECTIVITY



- LAB
- LAB SUPPORT
- OFFICE

TYPICAL FLOOR PLAN



17C – HELEN DILLER CANCER RESEARCH BUILDING



17A/B – CARDIOVASCULAR RESEARCH BUILDING



24A/B/C – GENENTECH HALL



19B – ROCK HALL

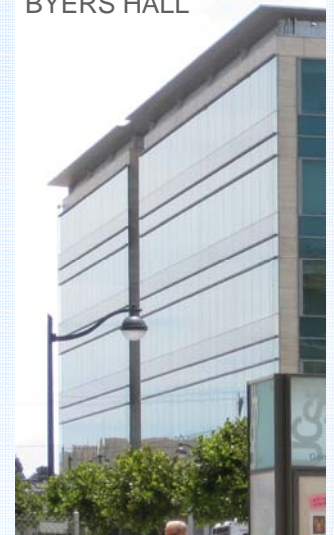
CONTEXT



VIEW FROM SOUTH



BYERS HALL



ROCK HALL



VIEW FROM SOUTH



17C -HELEN DILLER

BYERS HALL

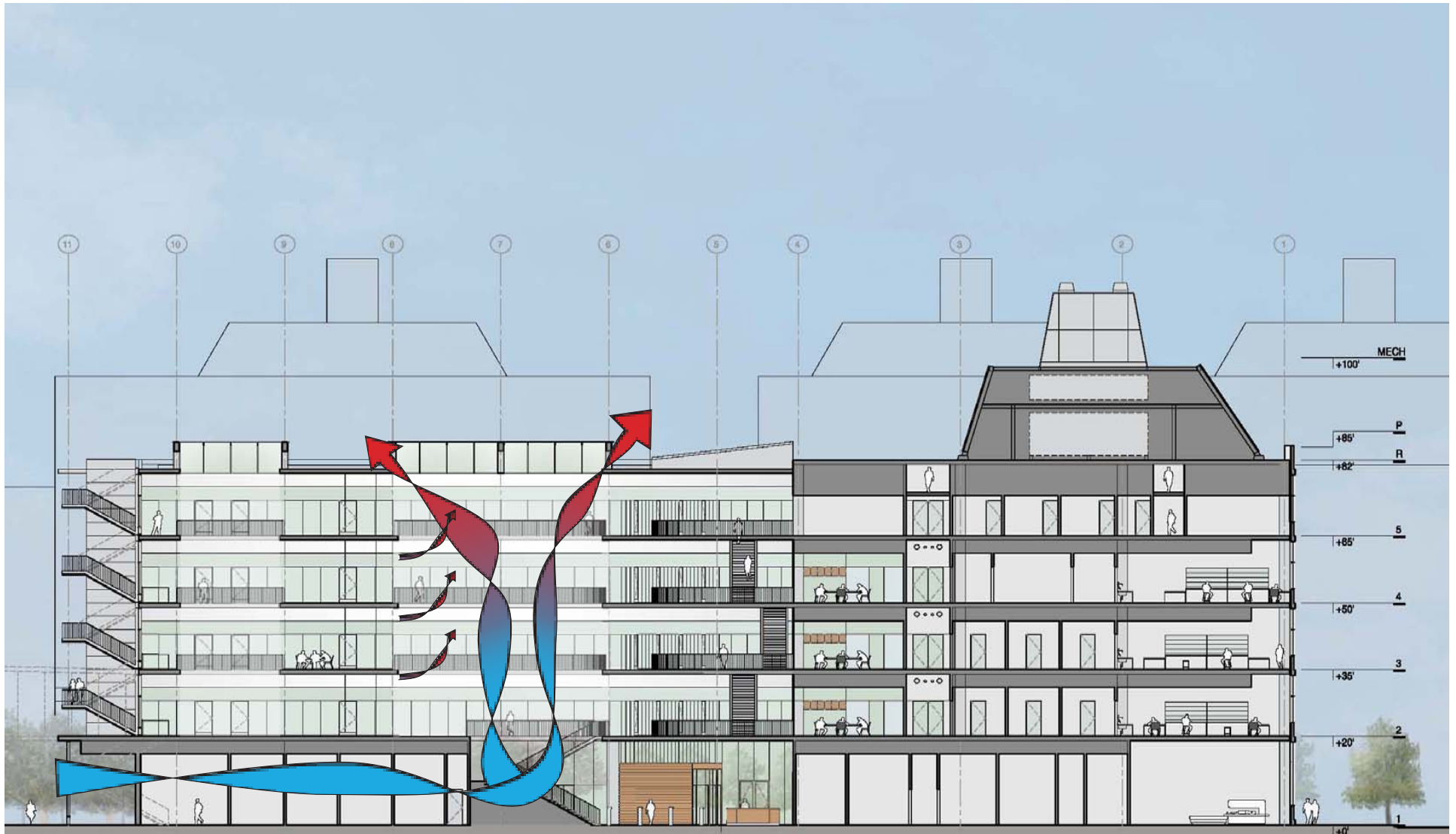


ROCK HALL

VIEW FROM SOUTHWEST



NORTH ELEVATION



SUSTAINABILITY – NATURAL VENTILATION

Neurosciences Building (19A)

LEED/Sustainability Items

- LEED Silver Rating, Minimum
- LABS 21 Compliance
- Energy Efficiency
- Improved Construction Materials
- Natural Light
- Indoor Air Quality
- Rain Water Run Off

