

Regents Committee on Grounds and Buildings
Approval of Design
November 18, 2008



Sanford (San Diego) Consortium for Regenerative Medicine (SCRM)

University of California, San Diego

The Salk Institute for Biological Studies

The Scripps Research Institute

The Burnham Institute for Medical Research

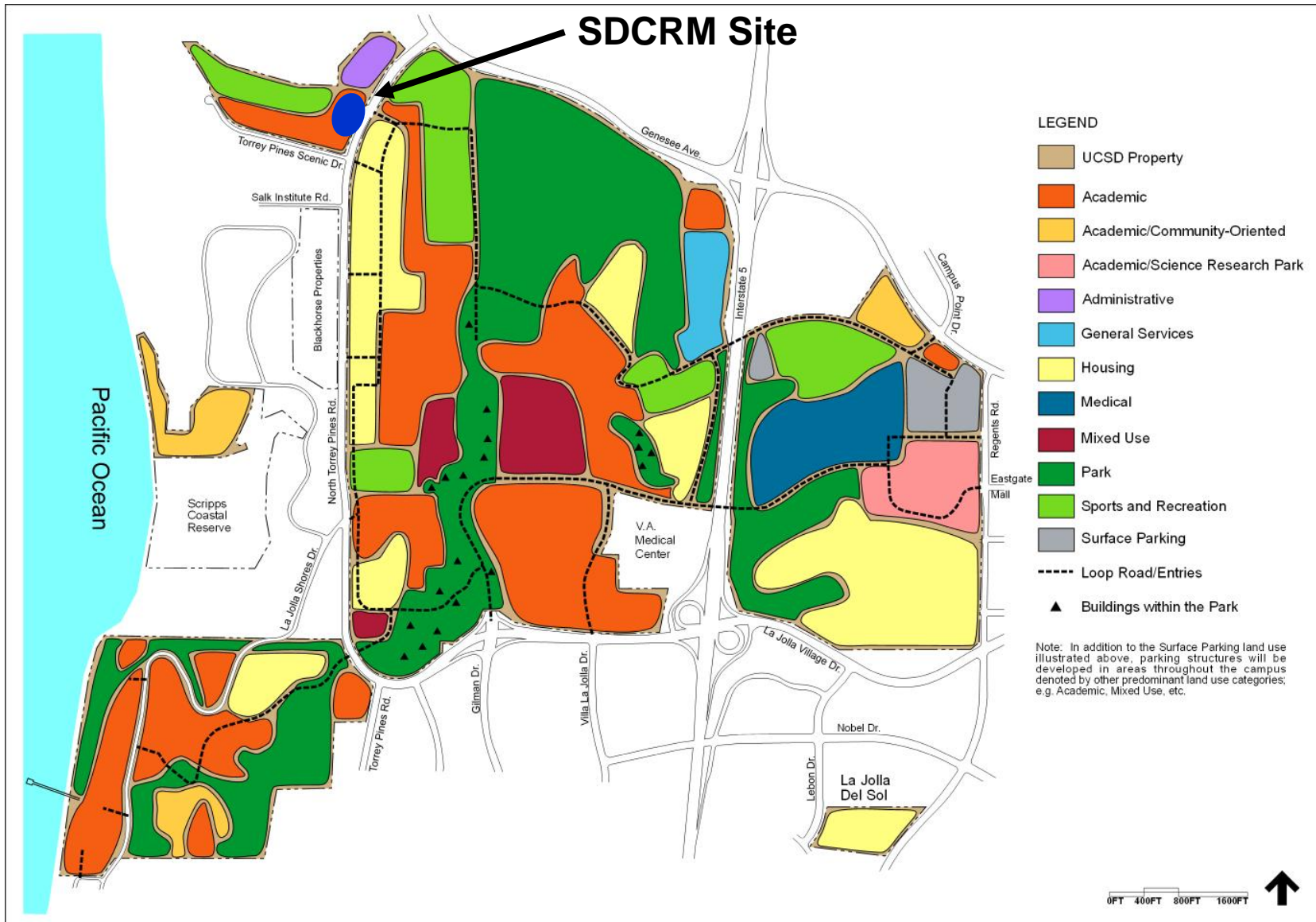
Project Information

- Consortium of UC San Diego, Burnham Institute for Medical Research, The Salk Institute and The Scripps Research Institute
- Unsubordinated ground lease to SCRM
- Lankford and Associates is the developer
- “Collaboratory” of research space
 - Wet labs, core facilities, vivarium
 - Offices, auditorium and café
 - Auditorium
 - 130,000 gross square feet
 - 98,000 assignable square feet
- LEED Gold



SDCRM Site

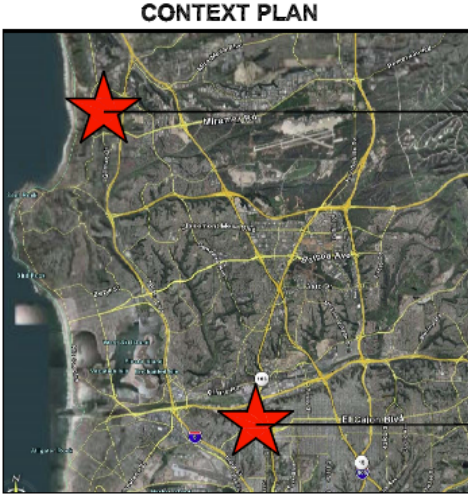
2004 LRDP Land Use Plan



Consortium Site Adjacency



LA JOLLA INVESTIGATORS



CONTEXT PLAN

LA JOLLA INVESTIGATORS (SEE ENLARGED PLAN)

UCSD HILLCREST



SDCRM Site

LA JOLLA INVESTIGATORS

- A. BURNHAM INSTITUTE
- B. TSRI
- C. SALK INSTITUTE
- D. UCSD SCHOOL OF MEDICINE
- E. UCSD CHEMISTRY DEPARTMENT
- F. UCSD BIOENGINEERING DEPARTMENT
- G. UCSD BIOLOGY DEPARTMENT
- H. UCSD CANCER CENTER

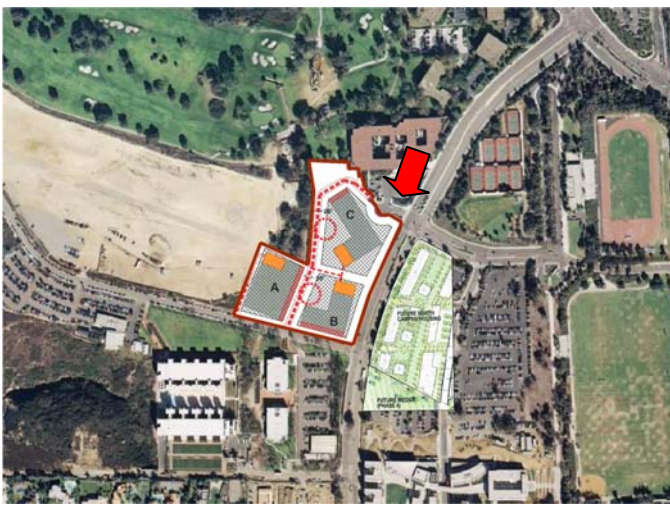


SDCRM Site

Torrey Pines Gliderport

Neighborhood Plan

Site Context



Site Context



Site Context





Site Context



Site Context



Site Context





SCR Building

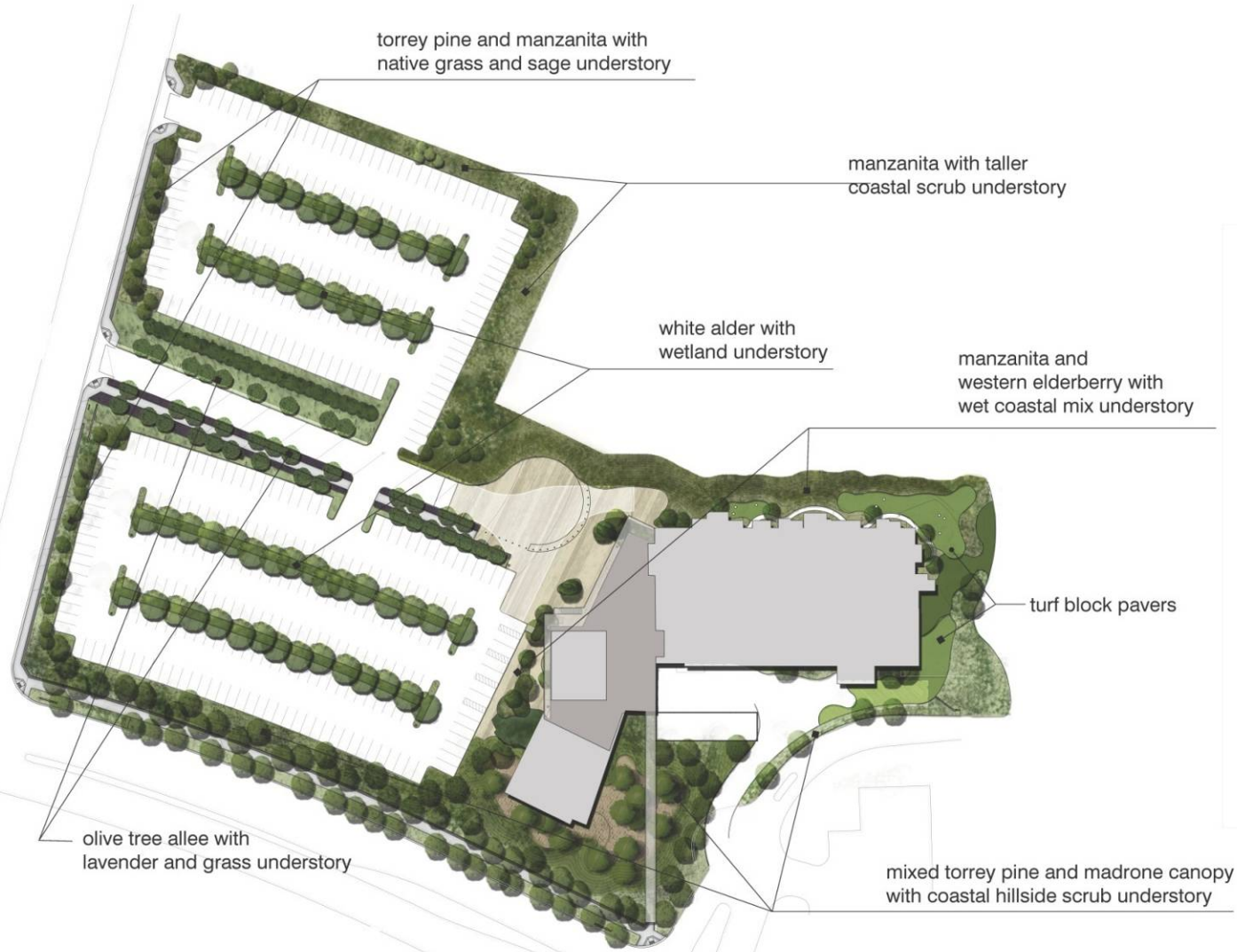
UCSD
Torrey Pines
Center

UCSD
North Campus
Housing, Phase 1

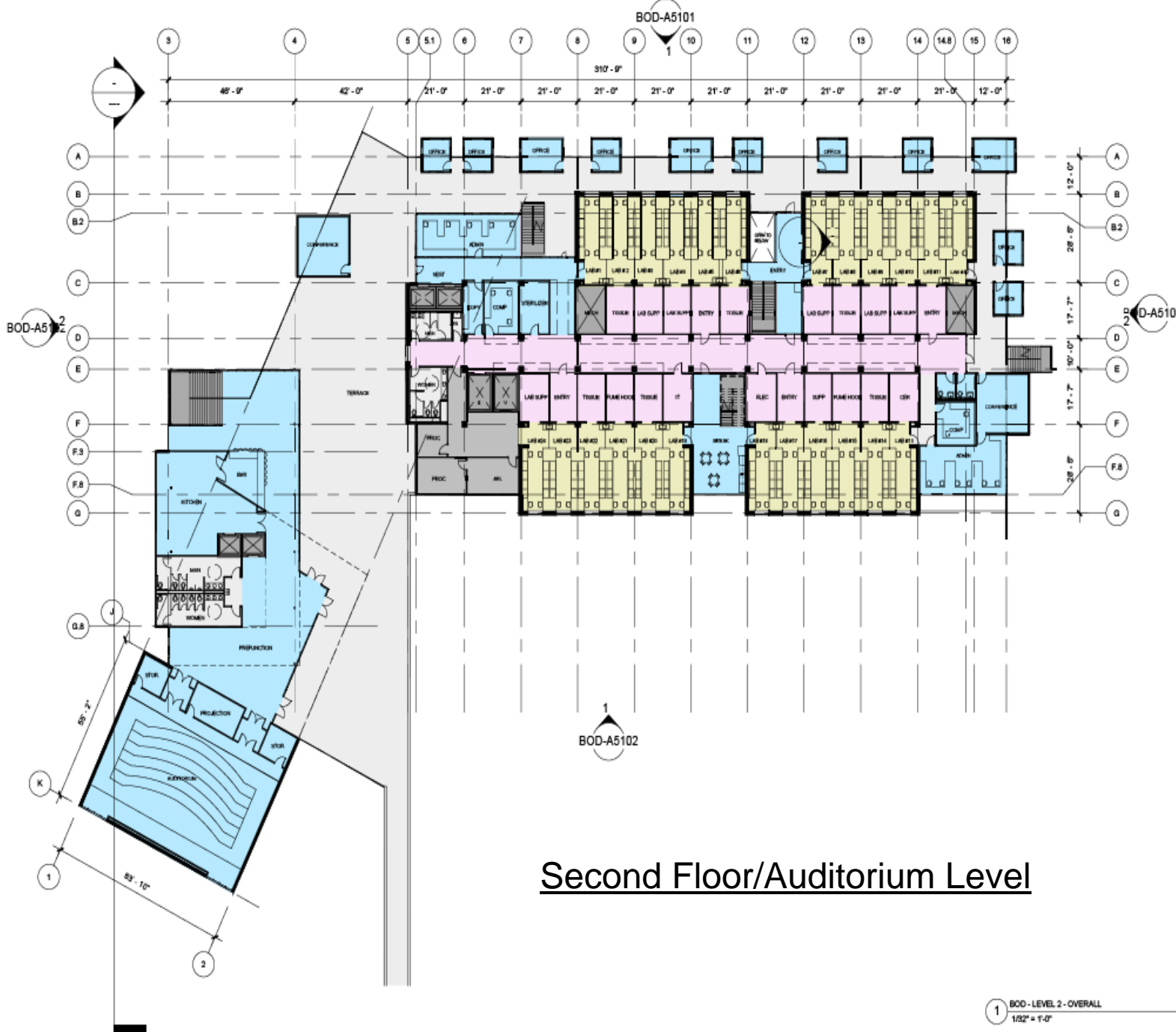
Aerial Site View looking to North



Aerial Site View Looking to South



SCRM Planting



Second Floor/Auditorium Level

1 BOD - LEVEL 2 - OVERALL
1/32" = 1'-0"

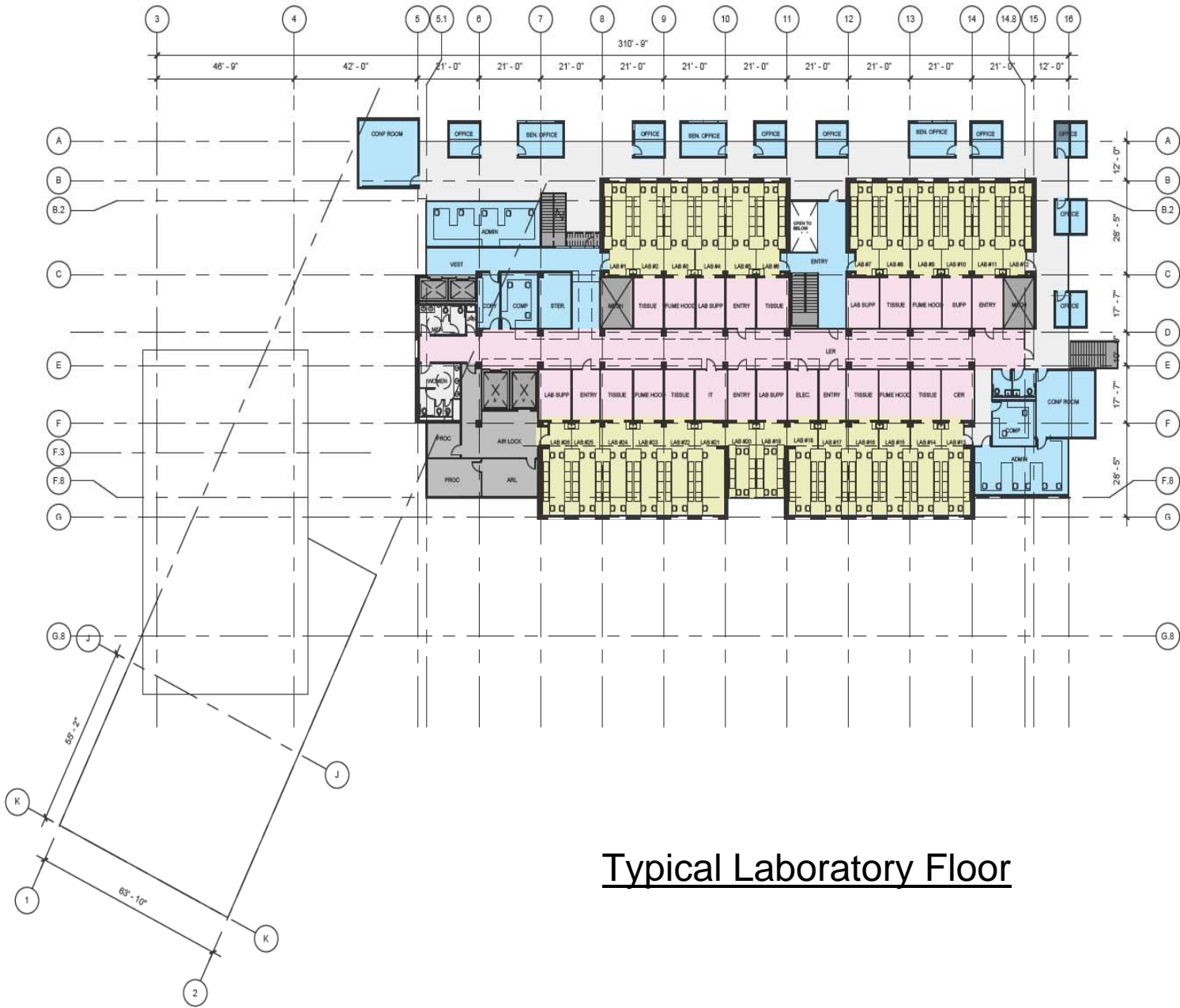
SAN DIEGO CONSORTIUM FOR REGENERATIVE MEDICINE

LA JOLLA, CALIFORNIA

SECOND FLOOR PLAN

BOD-A2120

BASIS OF DESIGN
JULY 24, 2008



Typical Laboratory Floor

1 BOD - LEVEL 4 - OVERALL
1/32" = 1'-0"

SAN DIEGO CONSORTIUM FOR
REGENERATIVE MEDICINE
LA JOLLA, CALIFORNIA

FOURTH
FLOOR PLAN

BOD-A2140

BASIS OF DESIGN
JULY 24, 2008



West Elevation



North Elevation



East Elevation



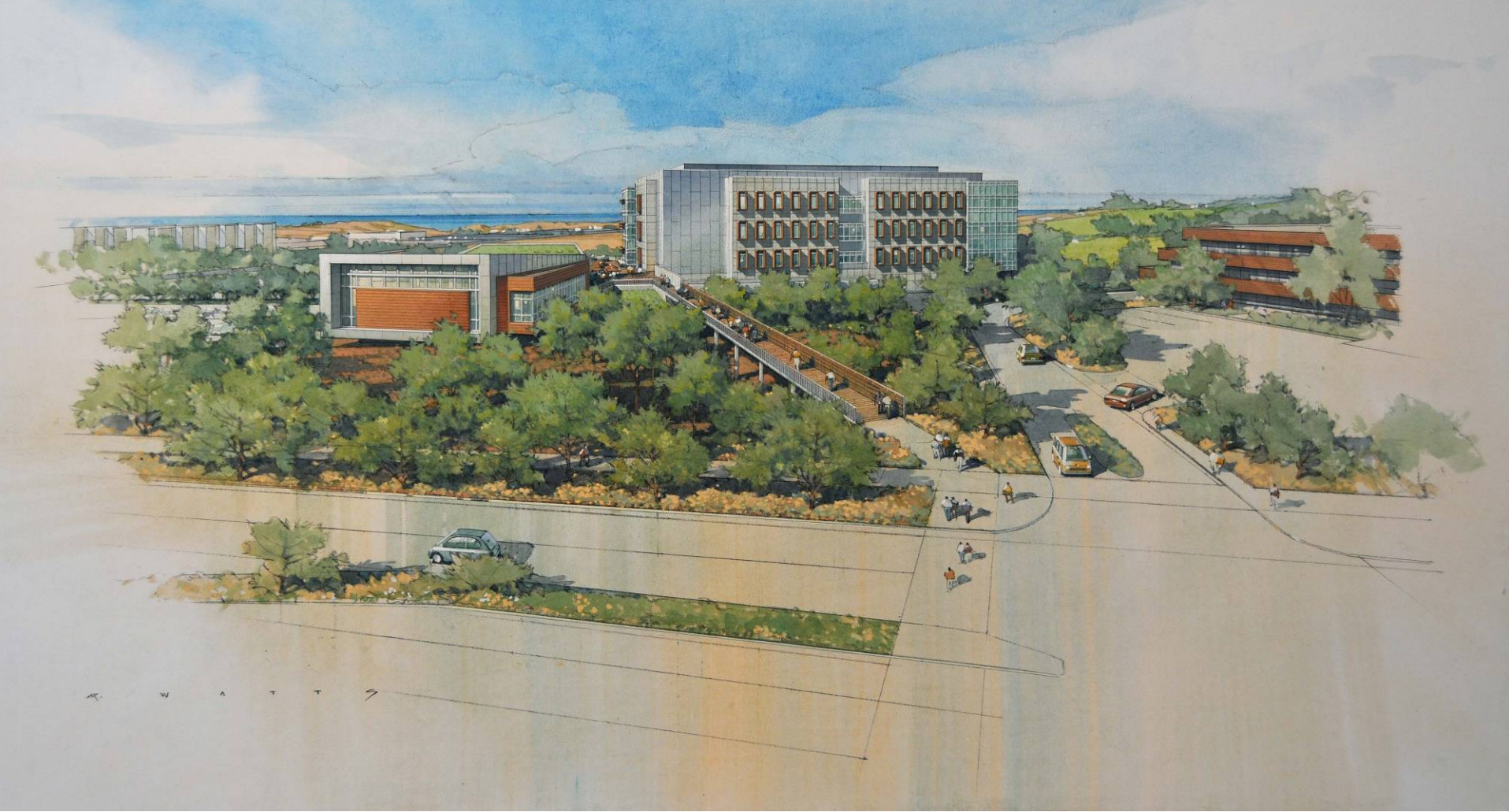
South Elevation



Material/Color Board



View looking East from Salk Institute



View looking West from Torrey Pines Road



West elevation office modules/pods



West elevation office modules/pods



Southwest corner of “collaboratory”



Exterior walkway on west facade



Outdoor terrace space

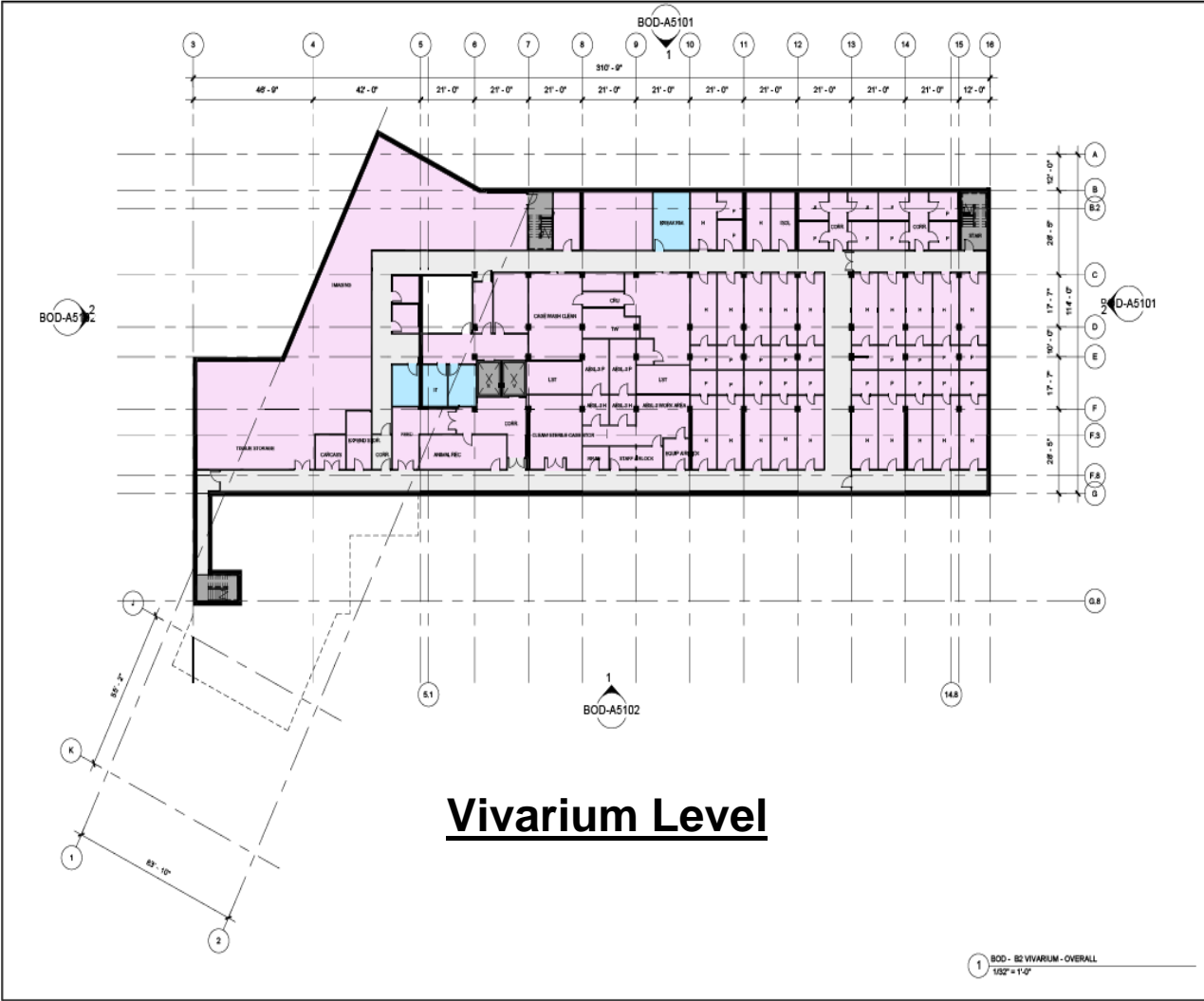


Upper level of auditorium at outdoor terrace

Sustainability Features

- Bicycle facilities/employee showers
- Dedicated parking for low emission vehicles
- Storm water treatment system
- Cool roof system
- Reclaimed water for irrigation
- Grey water use potential
- Ultra low flow plumbing fixtures
- Photovoltaic infrastructure
- 20% Post-consumer recycled content material
- Naturally ventilated office modules
- Carbon dioxide sensors
- Displacement ventilation system

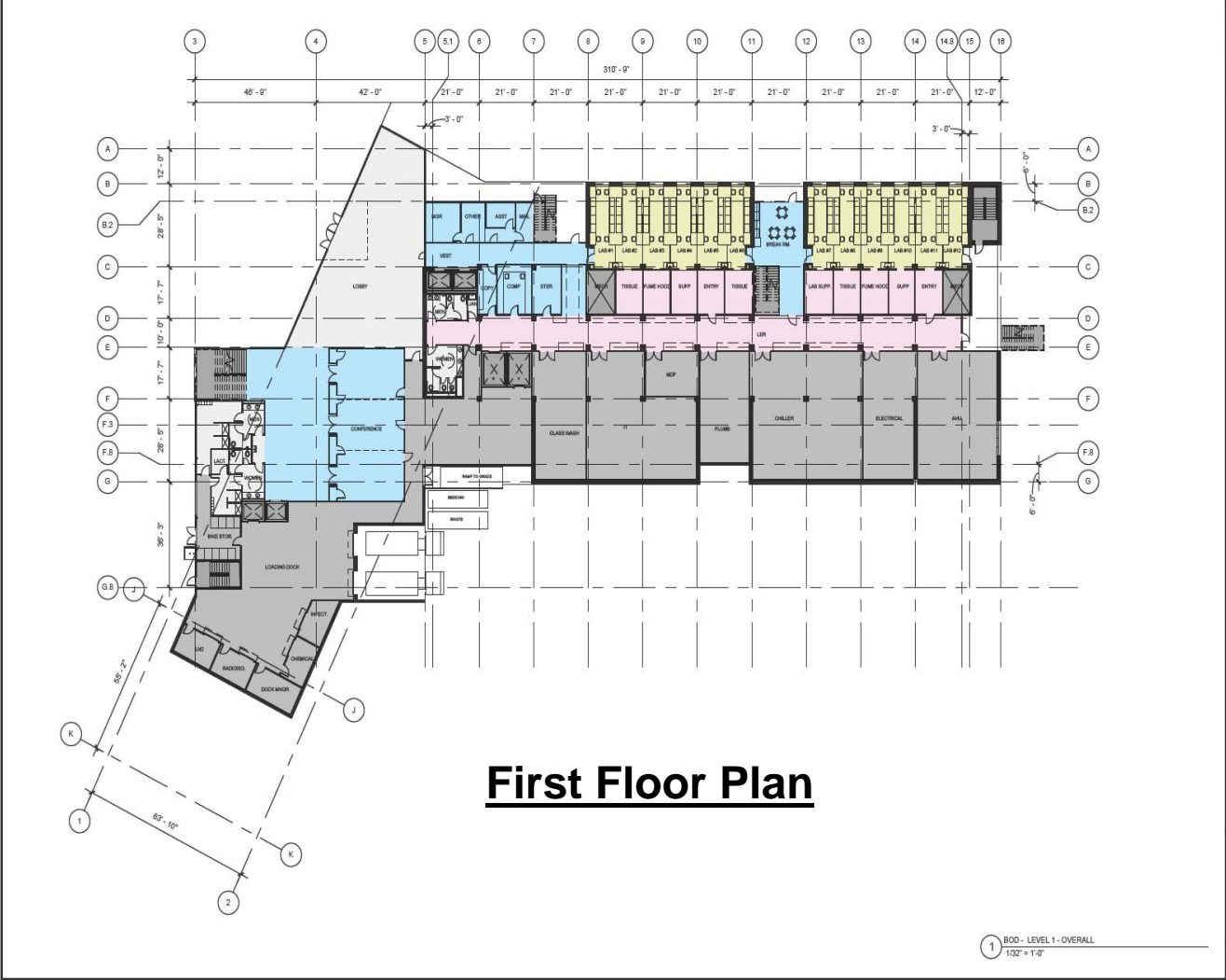
Discussion



PENTRESS | ARCHITECTS
 401 Broadway, Suite 200
 SAN DIEGO, CA 92101
 DAVIS | ARCHITECTS
 ARCHITECTS
 3401 Fifth Avenue
 San Diego, CA 92103
 Lankford & Associates, Inc.
 Hensel Phelps Construction Co.

**SAN DIEGO CONSORTIUM FOR
 REGENERATIVE MEDICINE**
 LA JOLLA, CALIFORNIA

VIVARIUM
 PLAN
 BOD-A21B20
 BASIS OF DESIGN
 JULY 24, 2008



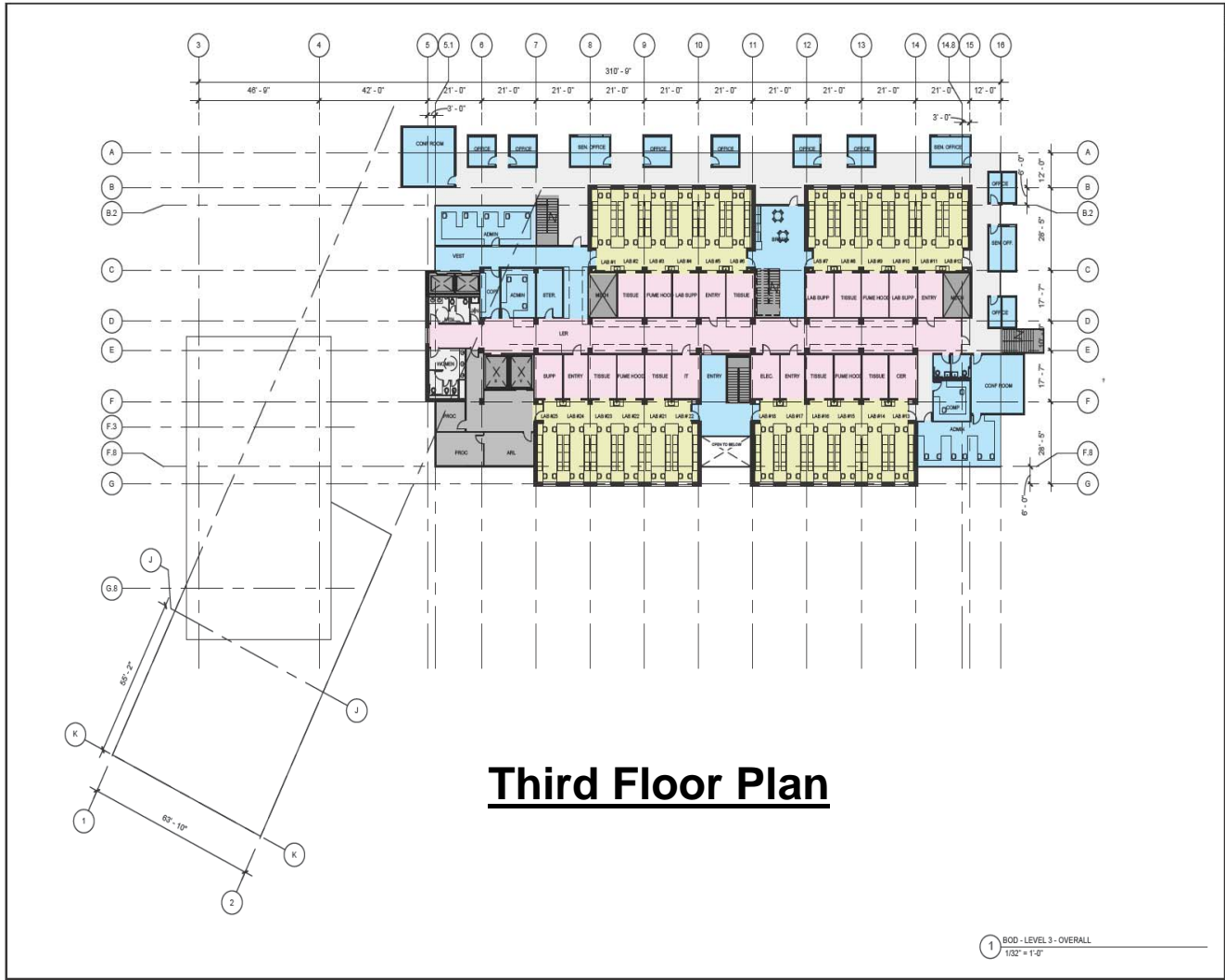
First Floor Plan

1 BOD - LEVEL 1 - OVERALL
1/32" = 1'-0"

FENTRESS ARCHITECTS
431 Broadway, Denver, CO 80202
DAVIS ARCHITECTS
3651 Fifth Avenue
San Diego, CA 92103
Lankford & Associates, INC.
Hensel Phelps Construction Co.

**SAN DIEGO CONSORTIUM FOR
REGENERATIVE MEDICINE**
LA JOLLA, CALIFORNIA

FIRST FLOOR PLAN
BOD-A2110
BASIS OF DESIGN
JULY 24, 2008



Third Floor Plan

1 BOD - LEVEL 3 - OVERALL
1/32" = 1'-0"

FENTRESS ARCHITECTS
431 Broadway, Denver, CO 80202
DAVIS DAVIS ARCHITECTS
3651 Fifth Avenue
San Diego, CA 92103
Lankford & Associates, INC.
Hensel Phelps Construction Co.

SAN DIEGO CONSORTIUM FOR REGENERATIVE MEDICINE LA JOLLA, CALIFORNIA

THIRD
FLOOR PLAN

BOD-A2130

BASIS OF DESIGN
JULY 24, 2008



- ROOF 438' - 0"
- LEVEL 4 422' - 0"
- LEVEL 3 406' - 0"
- LEVEL 2 390' - 0"
- LEVEL 1 374' - 0"
- LEVEL B1 364' - 0"
- LEVEL B2 354' - 0"

North Elevation

2 BOD - NORTH
1/32" = 1'-0"



- ROOF 438' - 0"
- LEVEL 4 422' - 0"
- LEVEL 3 406' - 0"
- LEVEL 2 390' - 0"
- LEVEL 1 374' - 0"
- LEVEL B1 364' - 0"
- LEVEL B2 354' - 0"

West Elevation

1 BOD - WEST
1/32" = 1'-0"

SAN DIEGO CONSORTIUM FOR
REGENERATIVE MEDICINE
LA JOLLA, CALIFORNIA

EXTERIOR
ELEVATION

BOD-A5101

BASIS OF DESIGN
JULY 24, 2008



- ROOF 438' - 0"
- LEVEL 4 422' - 0"
- LEVEL 3 406' - 0"
- LEVEL 2 390' - 0"
- LEVEL 1 374' - 0"
- LEVEL B1 364' - 0"
- LEVEL B2 354' - 0"

South Elevation

2 BOD - SOUTH
1/32" = 1'-0"



- ROOF 438' - 0"
- LEVEL 4 422' - 0"
- LEVEL 3 406' - 0"
- LEVEL 2 390' - 0"
- LEVEL 1 374' - 0"
- LEVEL B1 364' - 0"
- LEVEL B2 354' - 0"

East Elevation

1 BOD - EAST
1/32" = 1'-0"

SAN DIEGO CONSORTIUM FOR
REGENERATIVE MEDICINE
LA JOLLA, CALIFORNIA

EXTERIOR
ELEVATION

BOD-A5102

BASIS OF DESIGN
JULY 24, 2008







View looking East from Salk Institute



Ground Floor Entry Plaza



West Façade and Entry Court



Exterior Walk and Office Modules



Entry Driveway