

Porter College House B Addition

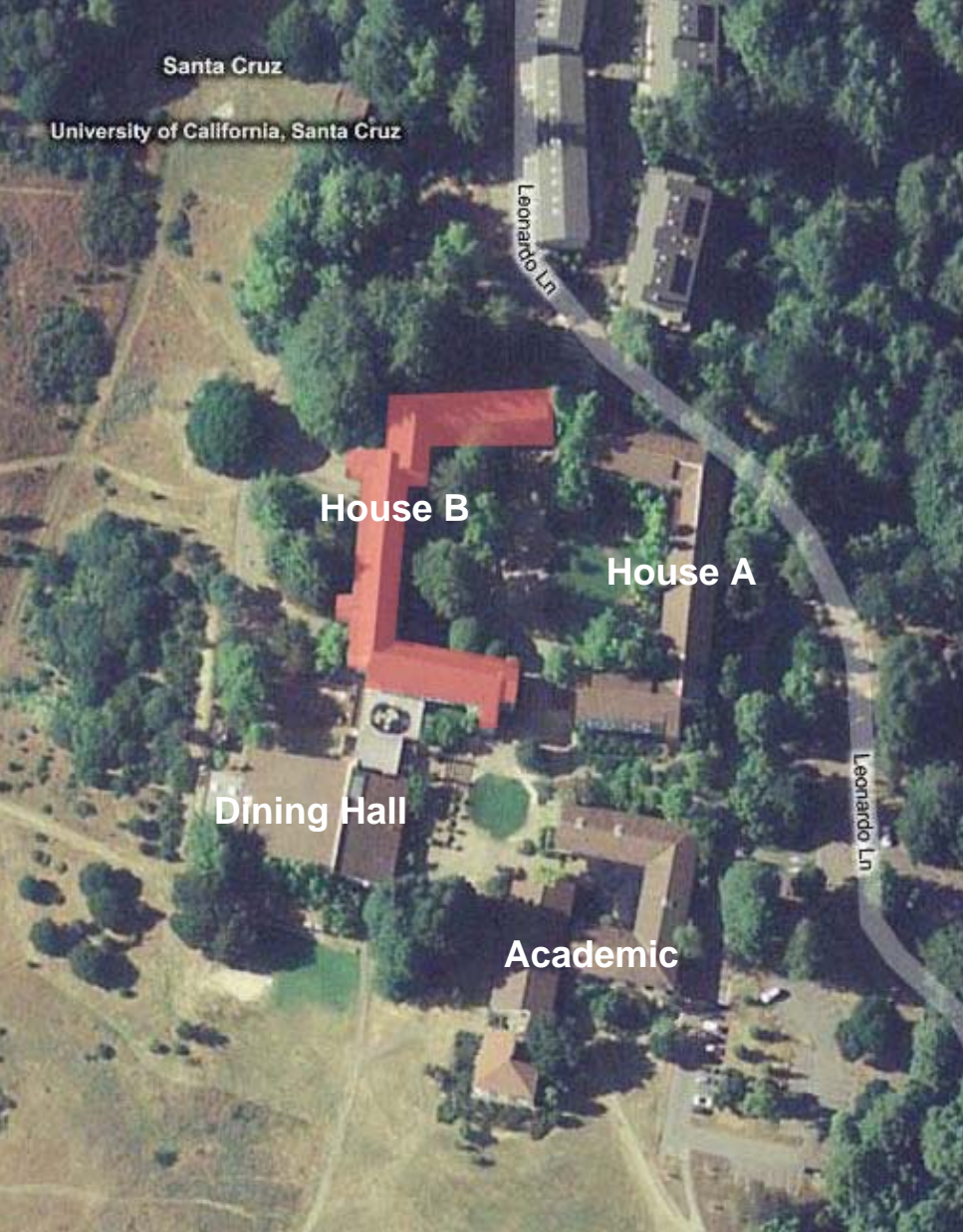
Regents Committee on Grounds & Building

July 15, 2008

UC SANTA CRUZ



Porter College at UC Santa Cruz



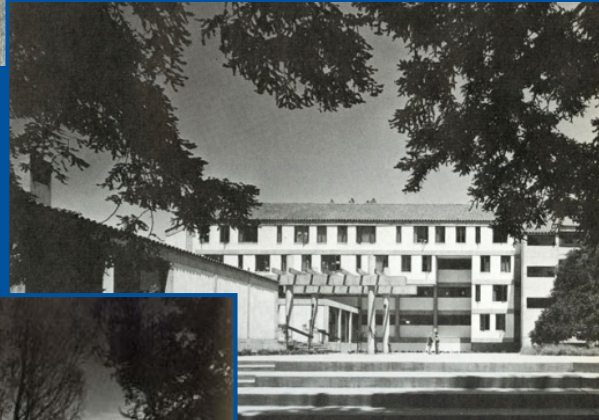
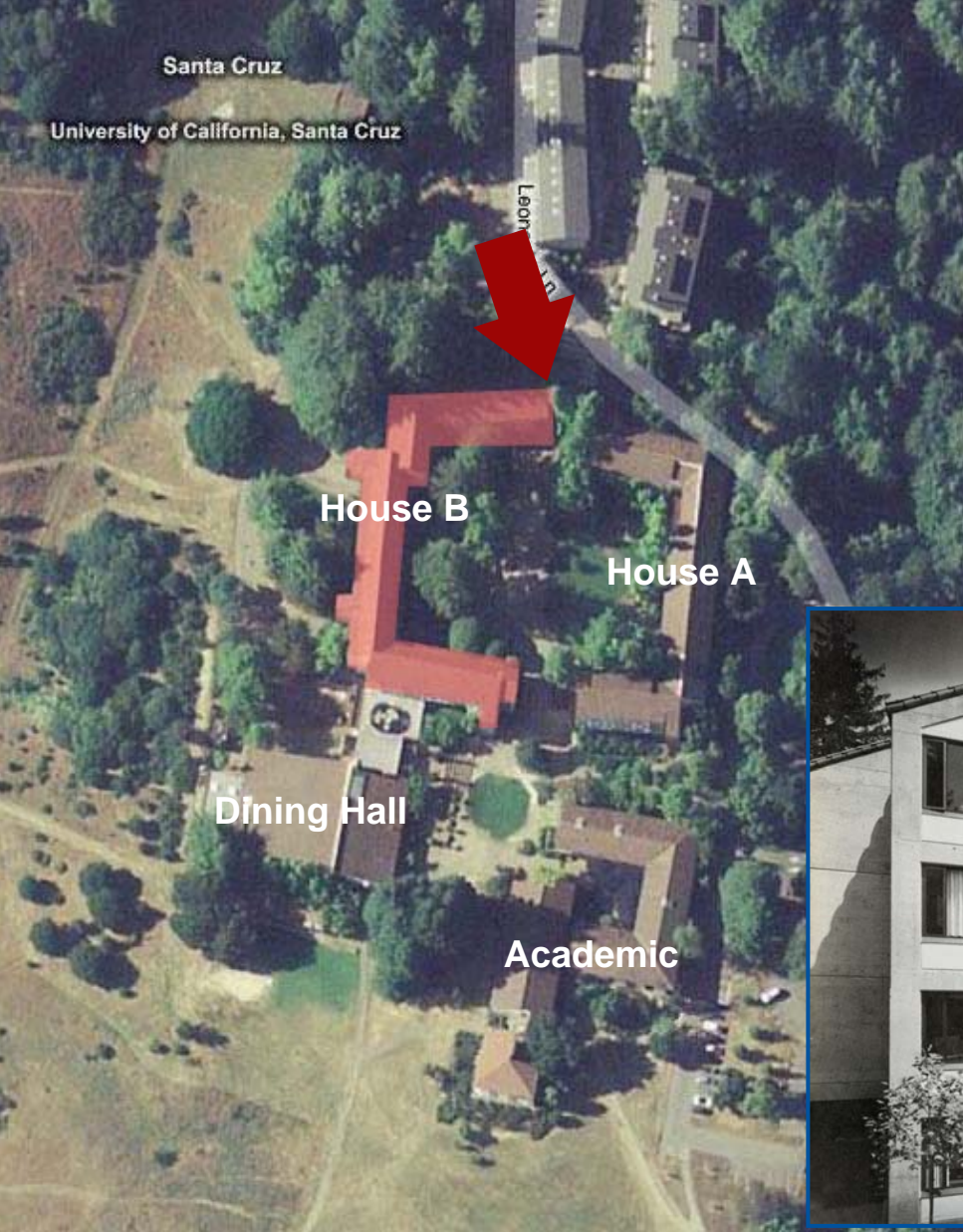
Porter College at UC Santa Cruz



Hugh Stubbins' Design of 1968



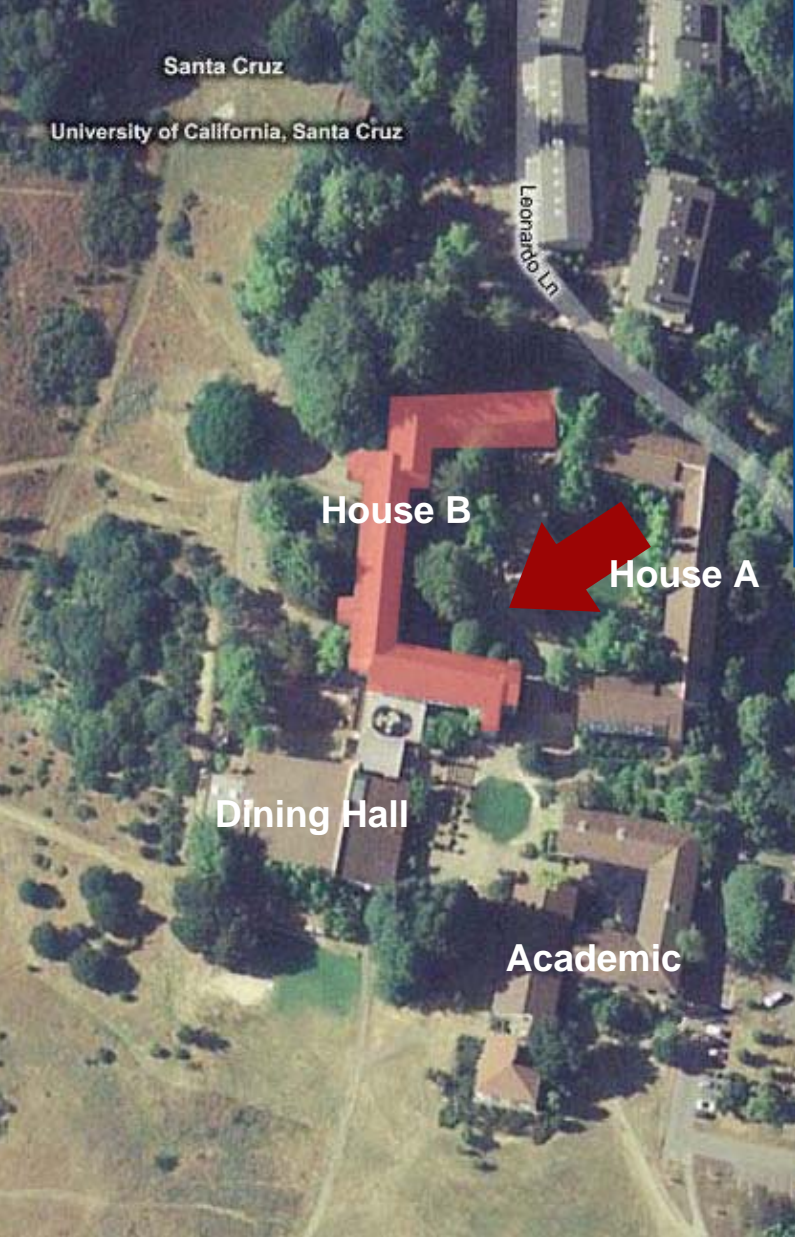
Hugh Stubbins' Design of 1968

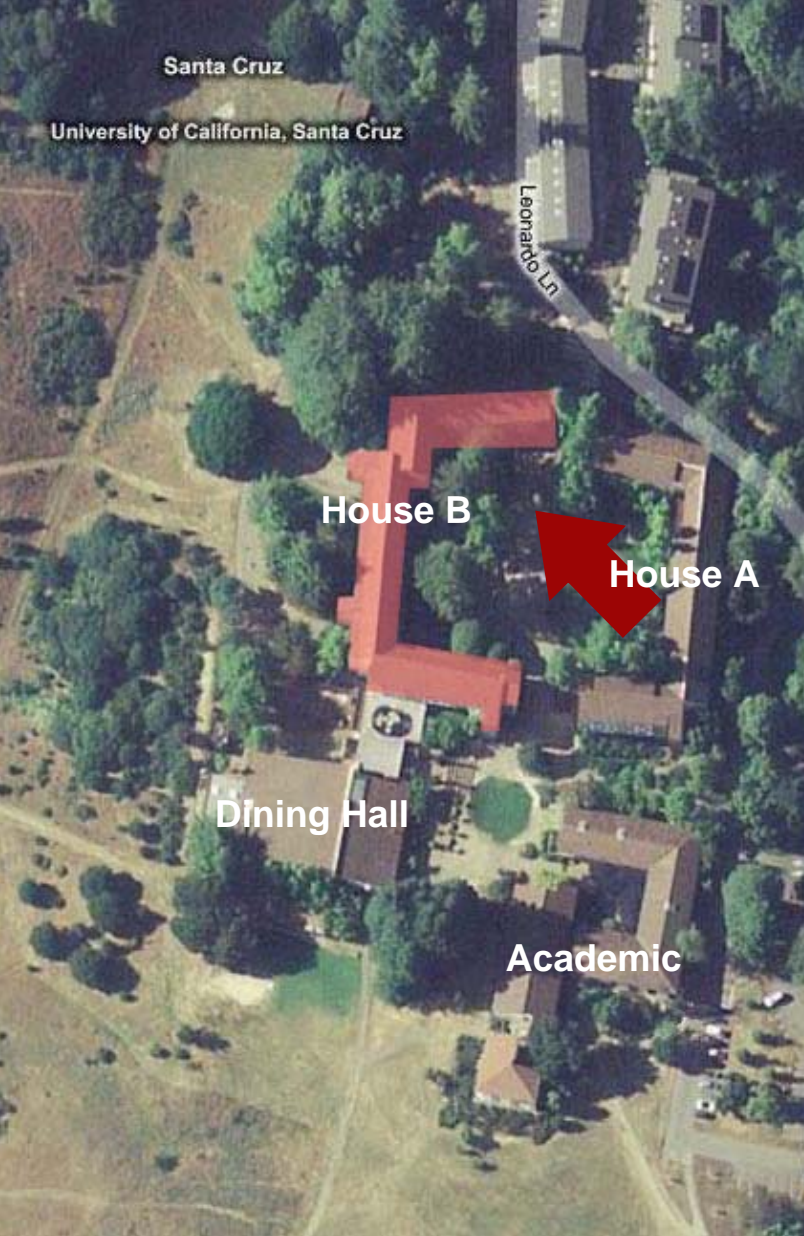


Hugh Stubbins' Design of 1968

UC SANTA CRUZ







Current Context

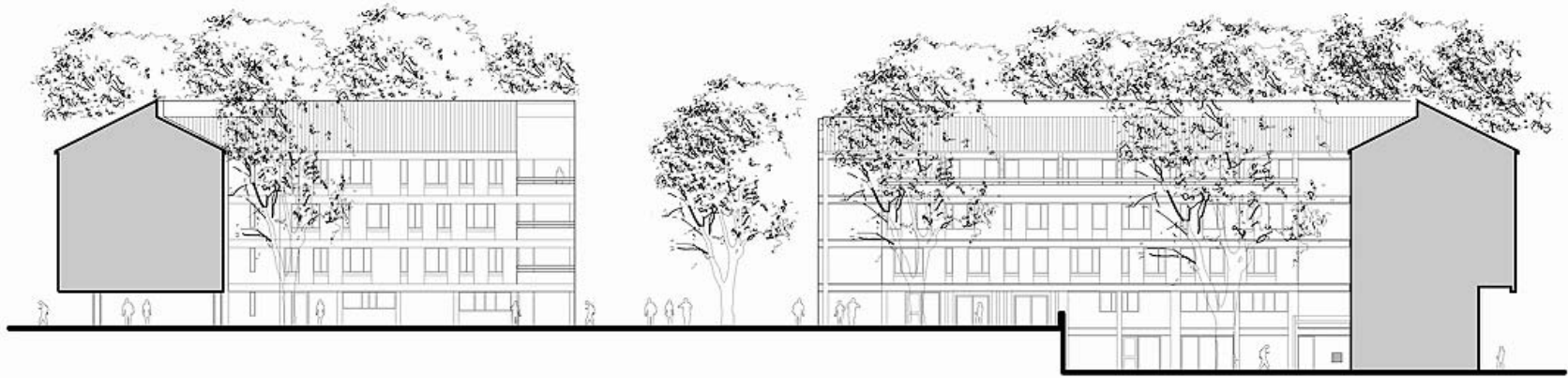
UC SANTA CRUZ



Current Context

UC SANTA CRUZ





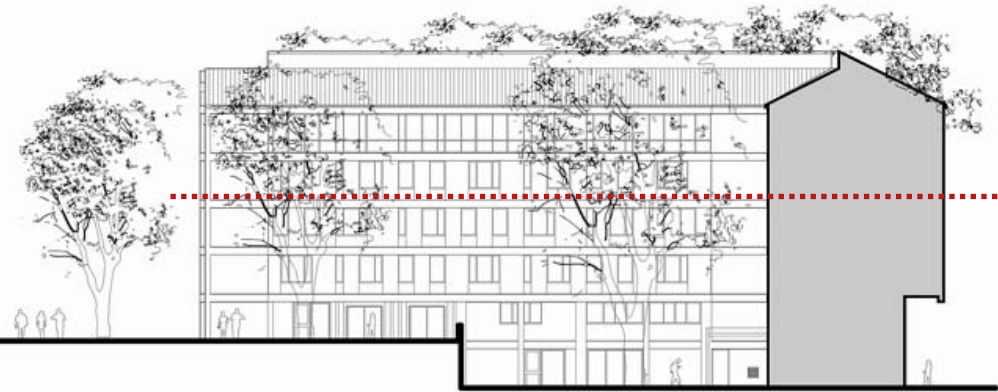
PORTER A
(future project)

PORTER B
(current project)

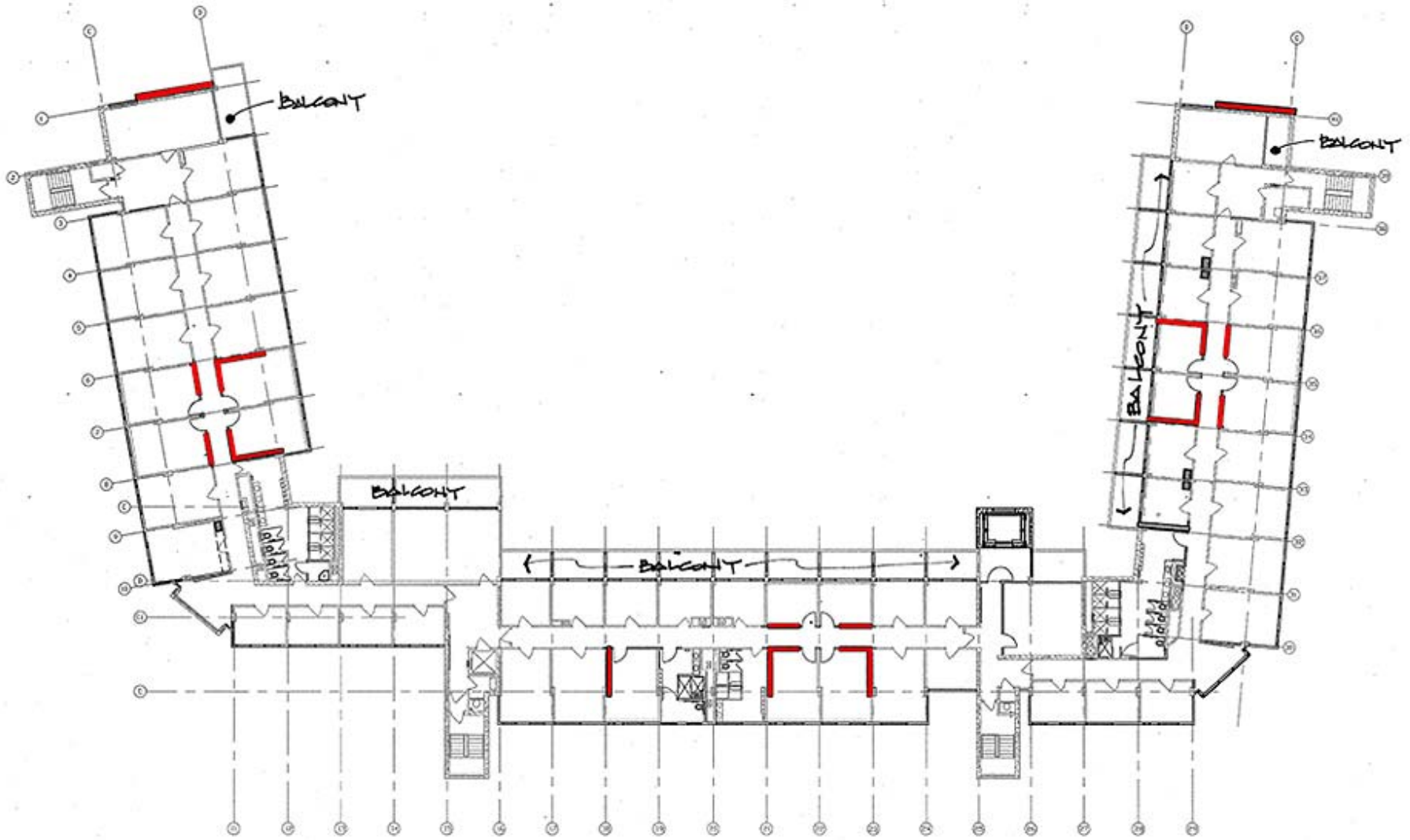


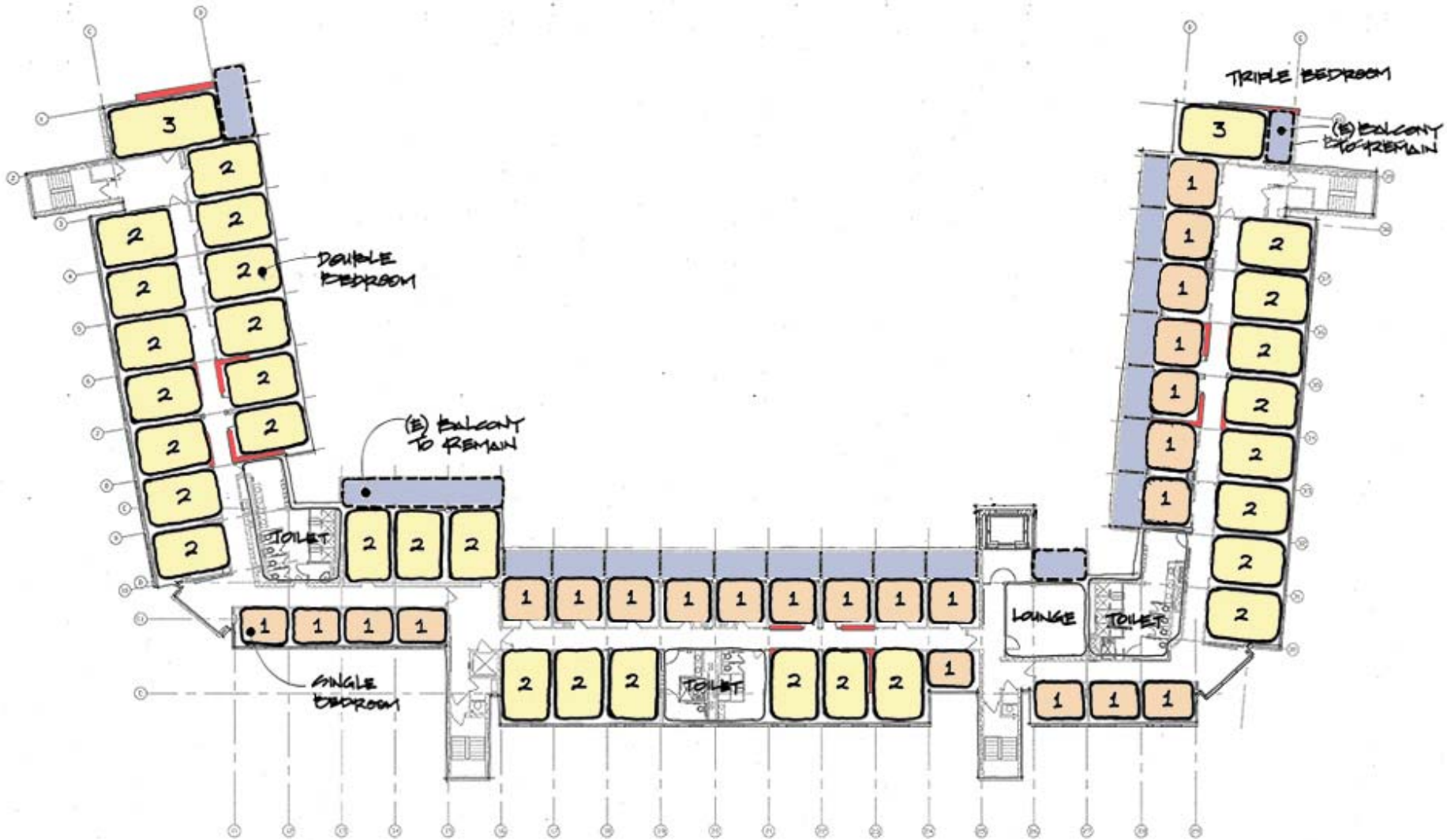


PORTER A
(future project)

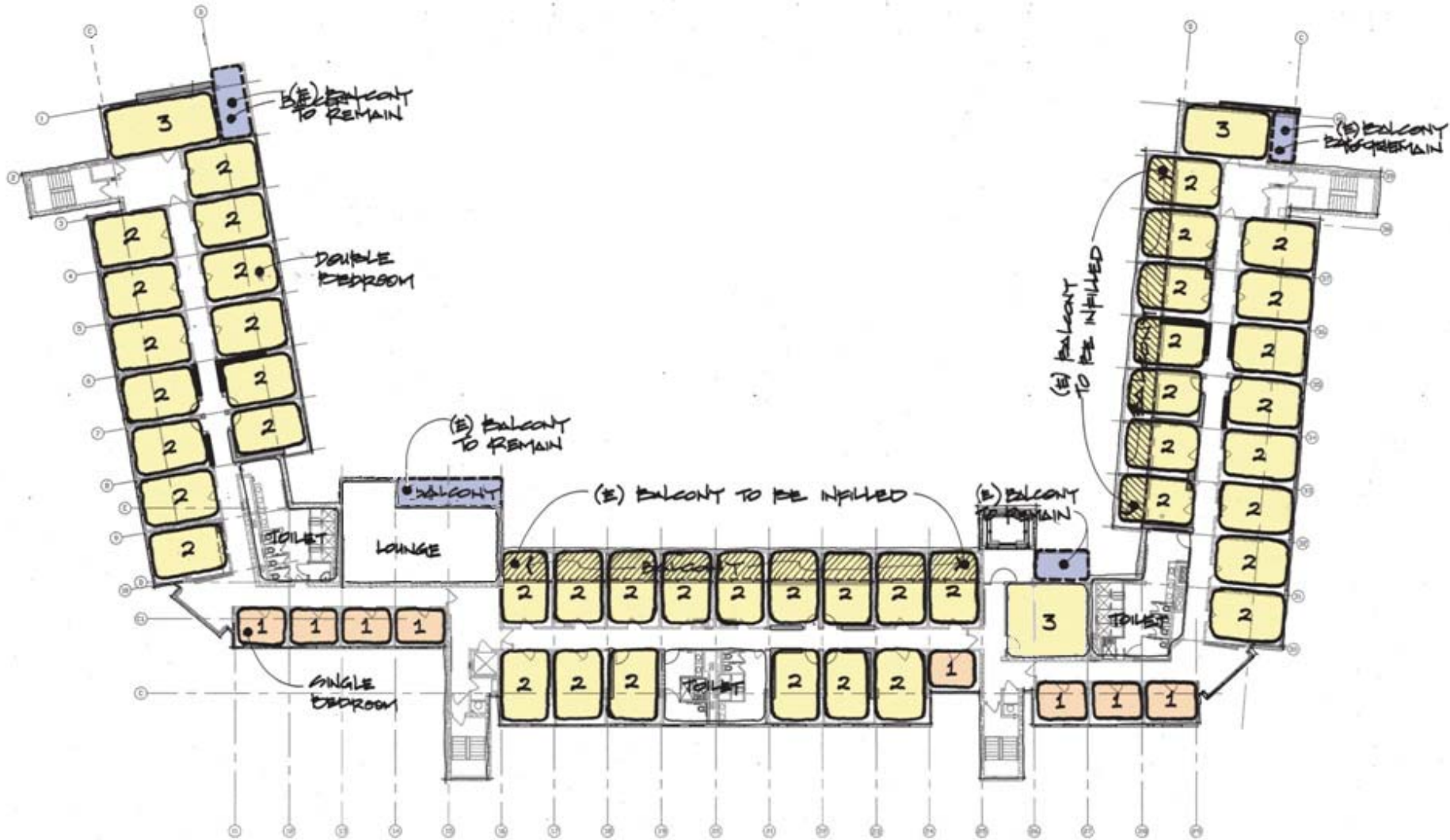


PORTER B
(current project)

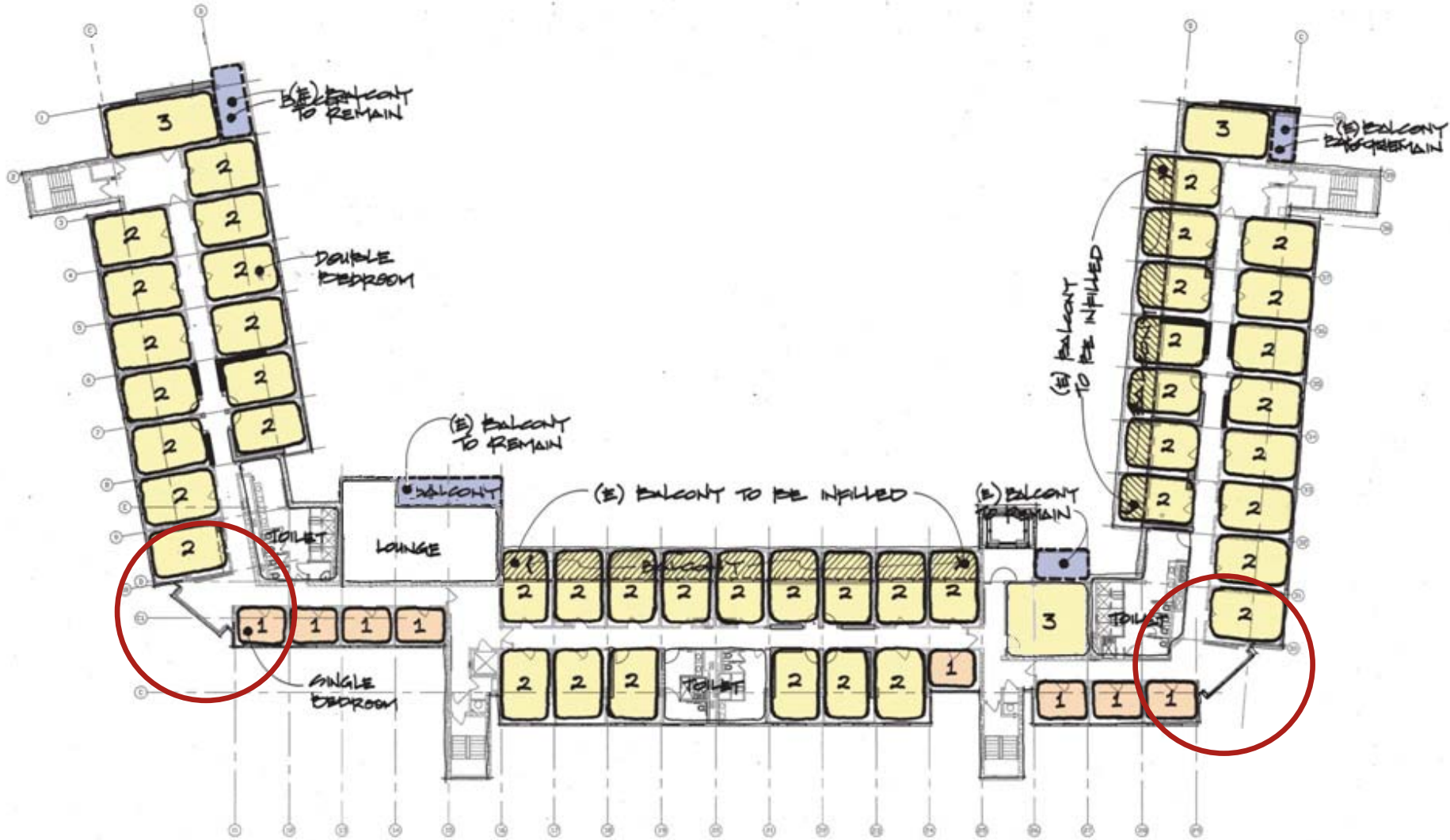




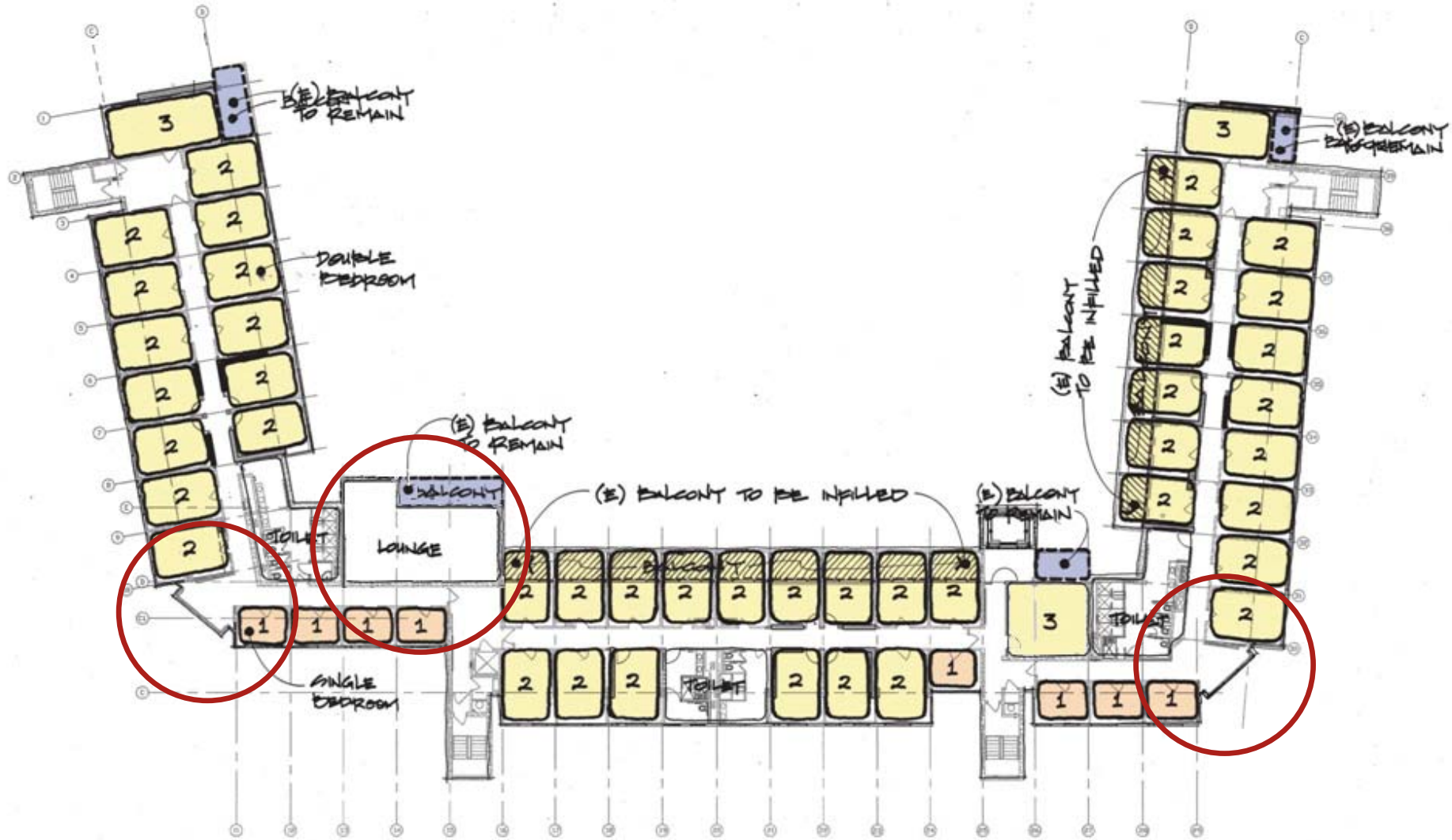
Porter House B - Existing Rooms - 5th Floor



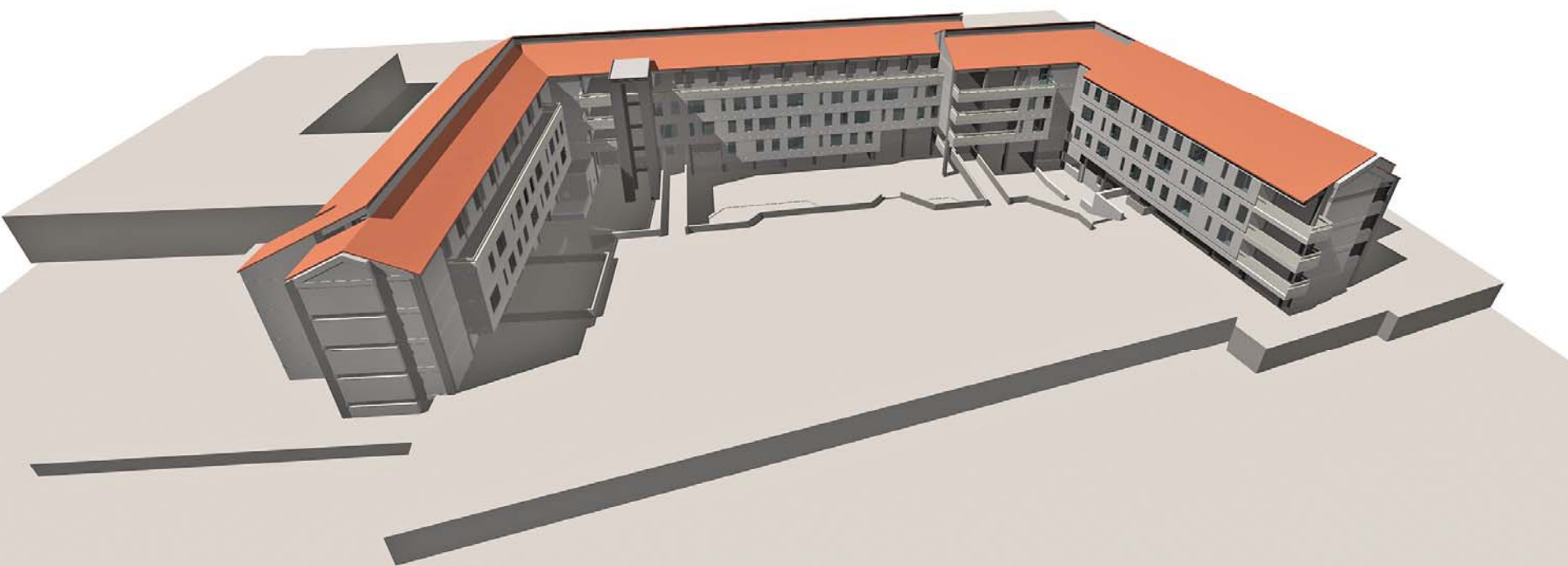
Porter House B - Proposed Rooms - 5th and 6th Floors



Porter House B - Proposed Rooms - 5th and 6th Floors



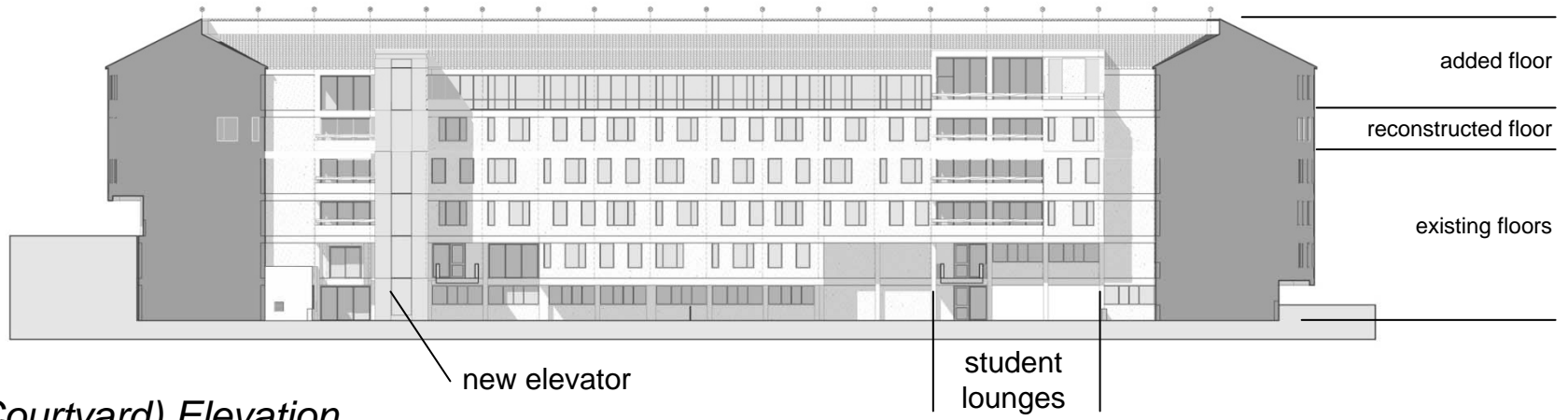
Porter House B - Proposed Rooms - 5th and 6th Floors



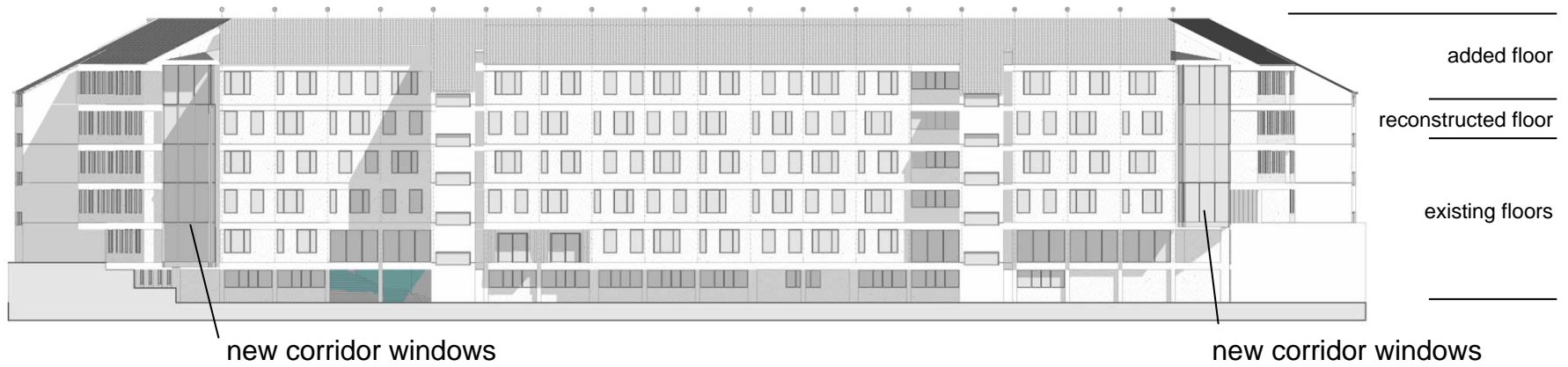
Porter House B - Existing Massing



Porter House B - Proposed Massing



East (Courtyard) Elevation



West (Service Road) Elevation



Porter House B - Courtyard View



Porter House B - Courtyard View



Porter House B - Courtyard View



- Target LEED Silver (33 to 38 points)
 - probable points: 30
 - possible additional points: 23



- Target LEED Silver (33 to 38 points)
 - probable points: 30
 - possible additional points: 23
- re-use of existing site & utilities
- low-flow toilets and urinals
- “purple pipe” for future use of reclaimed water
- materials with recycled content
- storm water management
- improved energy efficiency
- construction waste management



- Previously Approved Seismic Upgrade and Capital Renewal Project was Categorically Exempt



- Previously Approved Seismic Upgrade and Capital Renewal Project was Categorical Exempt
- Initial Study/Mitigated Negative Declaration prepared for addition project
 - public review period:
May 23 to June 22, 2008
 - two comments received
 - potentially significant impact:
construction noise
 - mitigated to less-than-significant level



UC SANTA CRUZ

