

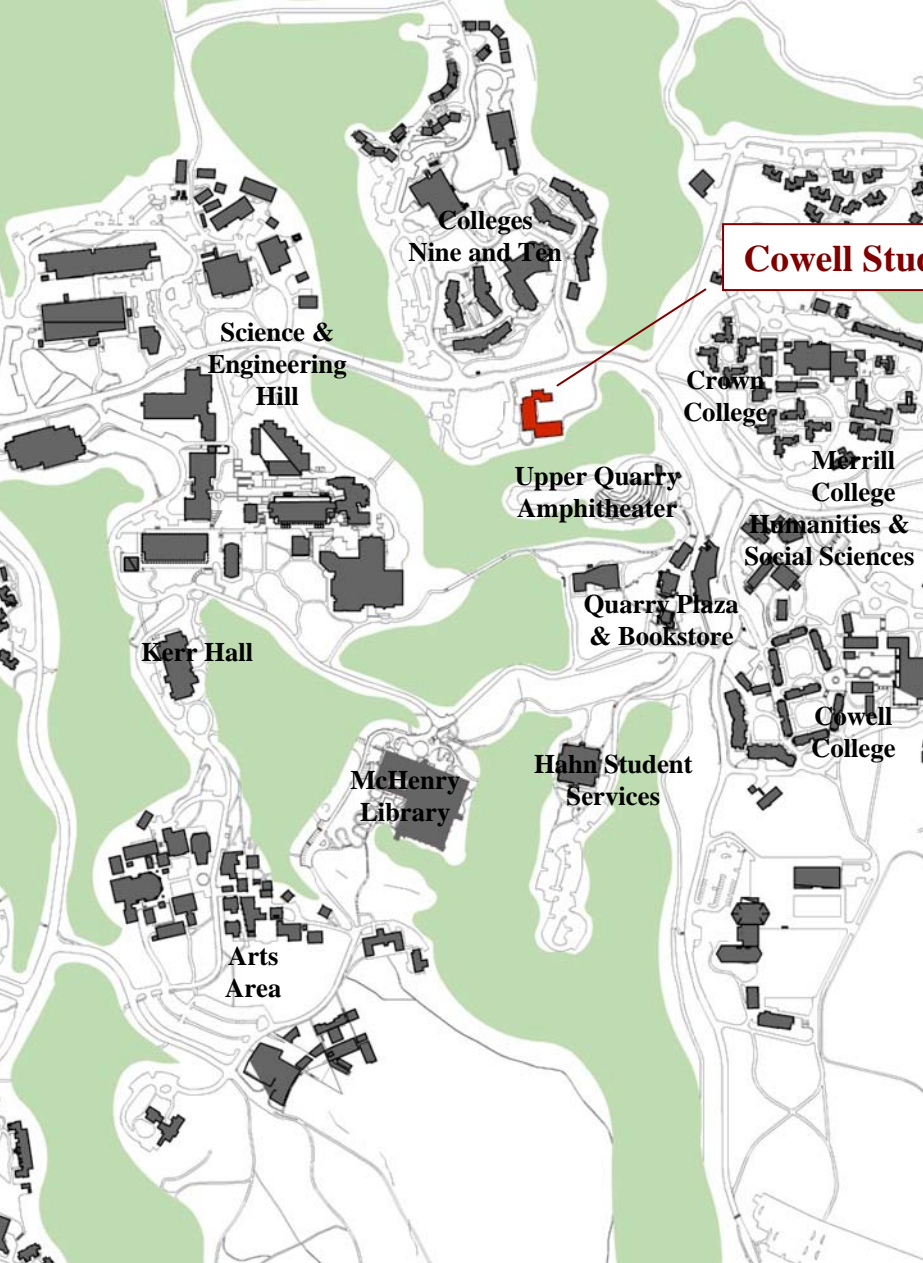


UC SANTA CRUZ

Cowell Student Health Center Expansion



Cowell Student Health Center Expansion



Cowell Student Health Center



Cowell Student Health Center Expansion

Existing Building: Main Entry Ramp



Cowell Student Health Center Expansion

Existing Bldg: West Wing



Cowell Student Health Center Expansion

Existing Bldg: South Wing



Cowell Student Health Center Expansion

Existing Bldg: Conference Room



Cowell Student Health Center Expansion

Existing Building: Courtyard



Cowell Student Health Center Expansion

Existing Building: Courtyard



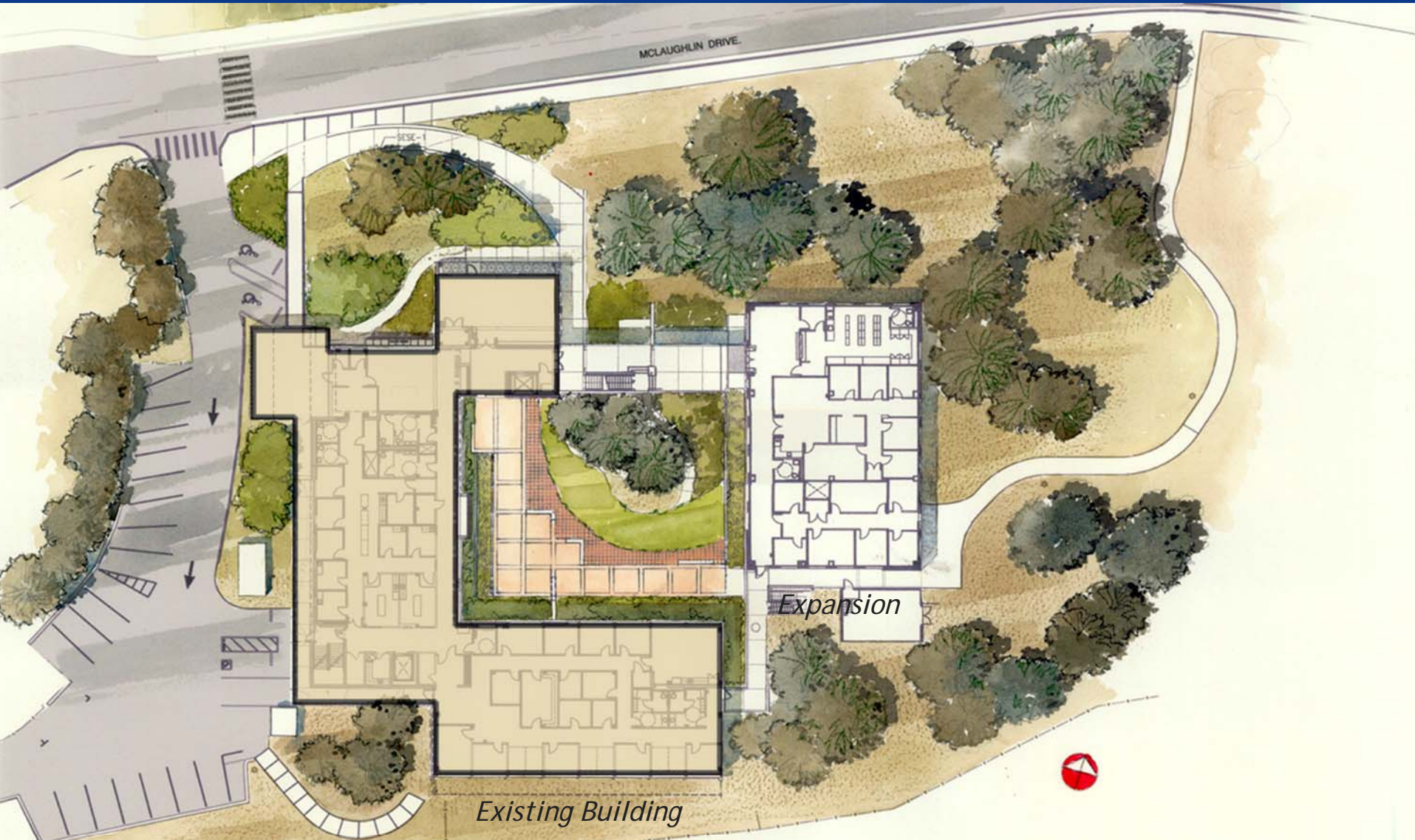
Cowell Student Health Center Expansion

Project Goals

- Program Goals
 - expand an aging facility built in 1970 for 8,500 students
 - update to meet current college health care model
 - ambulatory care has replaced inpatient care
 - increased emphasis on outreach and wellness
 - improved delivery of counseling & psychological services
 - concurrent seismic improvement project for existing building
- Design Goals
 - respect original building
 - develop courtyard as major asset
 - cost concerns = simple approach

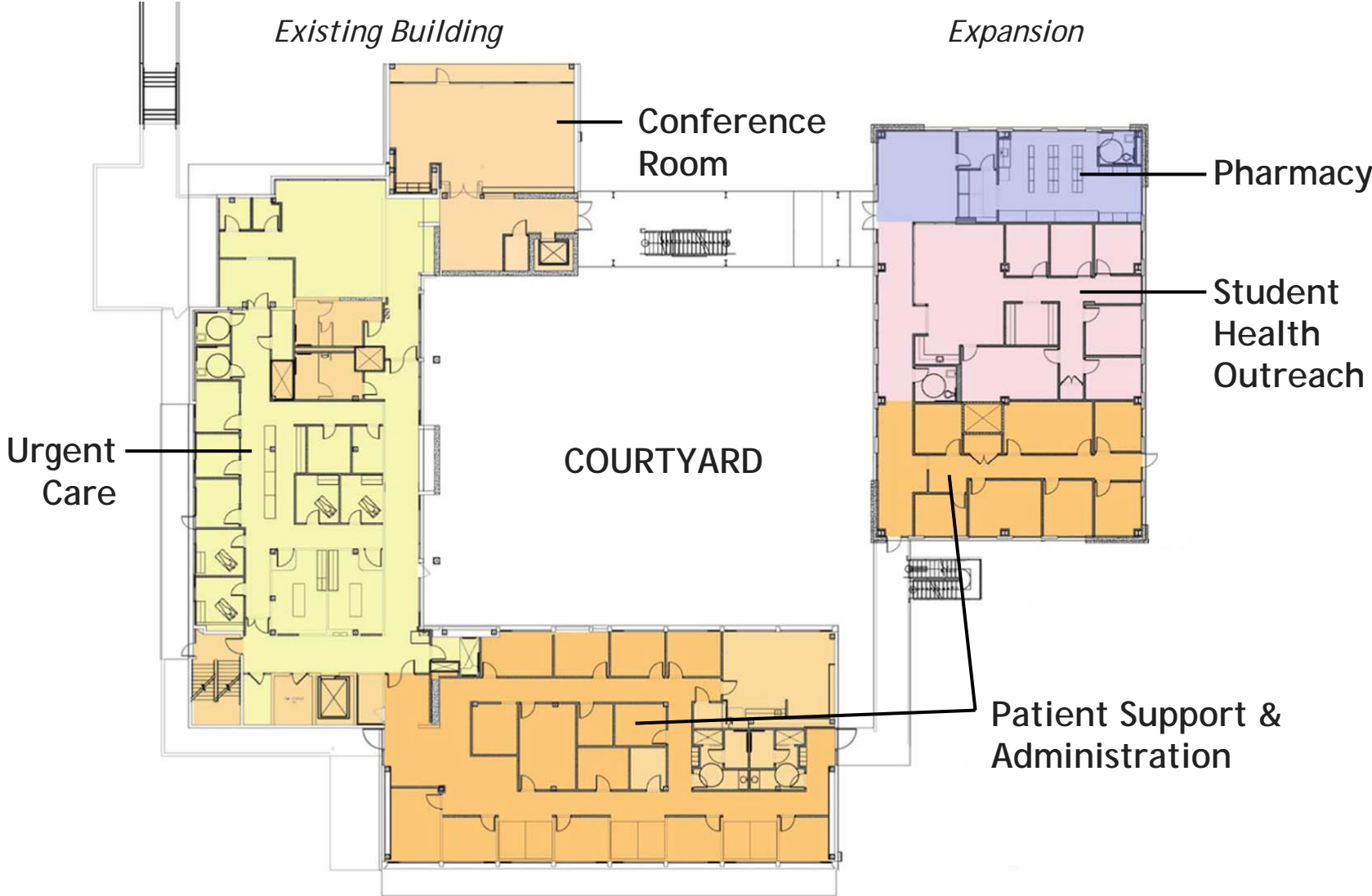
Cowell Student Health Center Expansion

First Floor Plan



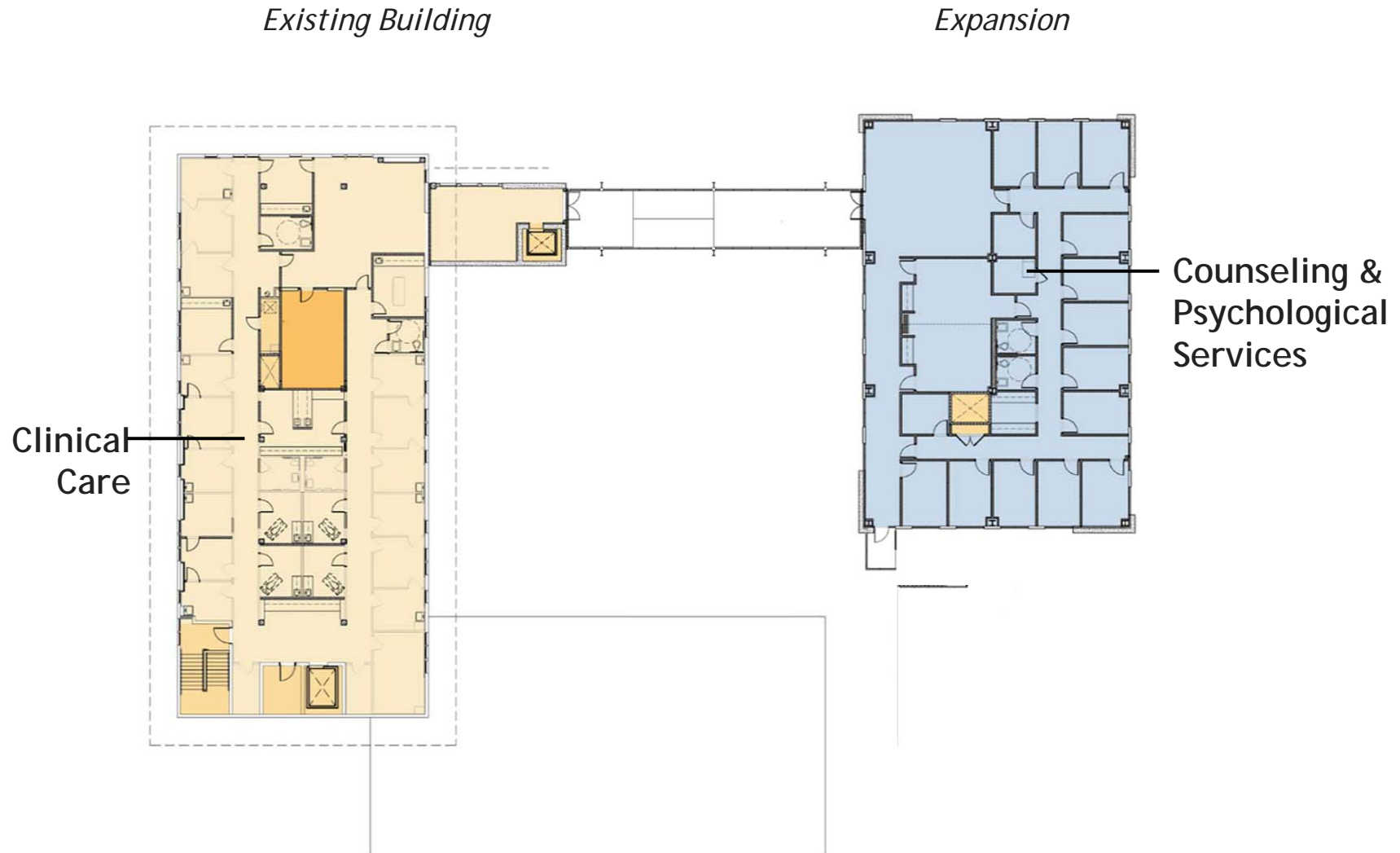
Cowell Student Health Center Expansion

First Floor Plan



Cowell Student Health Center Expansion

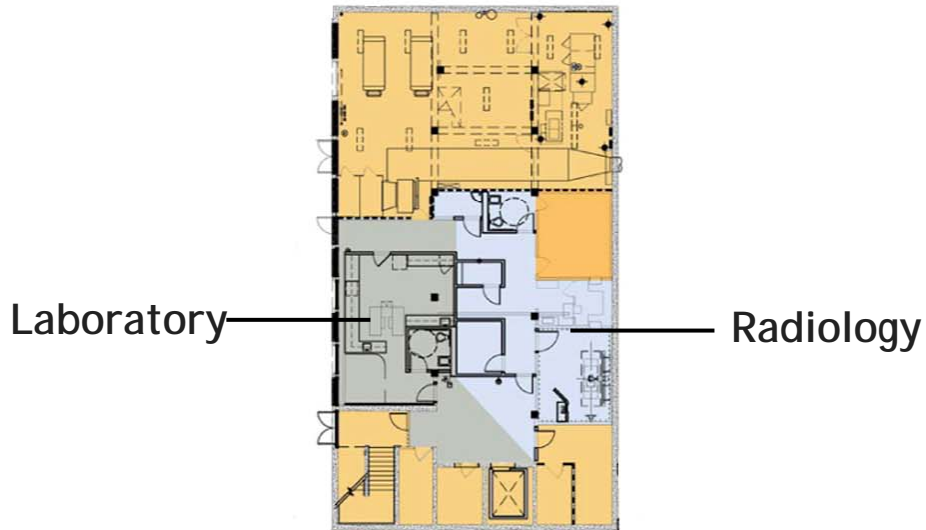
Second Floor Plan



Cowell Student Health Center Expansion

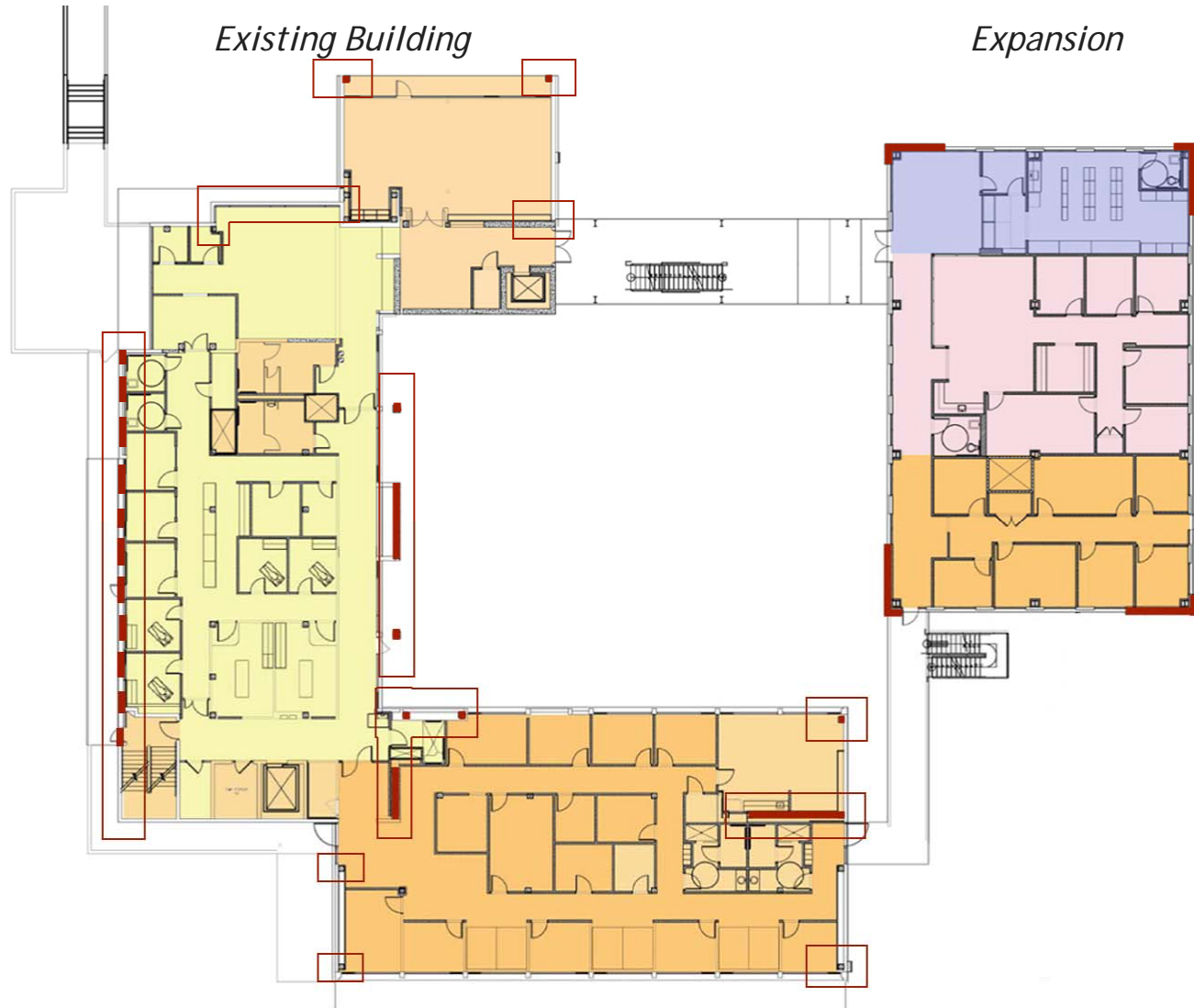
Basement Plan

Existing Building



Cowell Student Health Center Expansion

Seismic Improvement Diagram



Cowell Student Health Center Expansion

Entry View



Cowell Student Health Center Expansion

Courtyard View



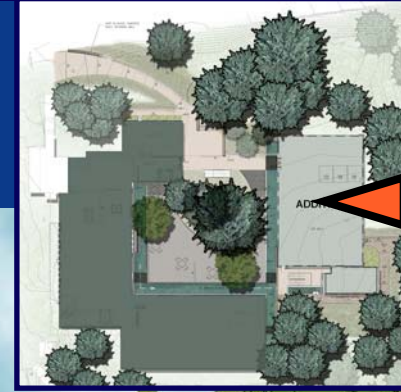
Cowell Student Health Center Expansion

North Elevation



Cowell Student Health Center Expansion

East Elevation

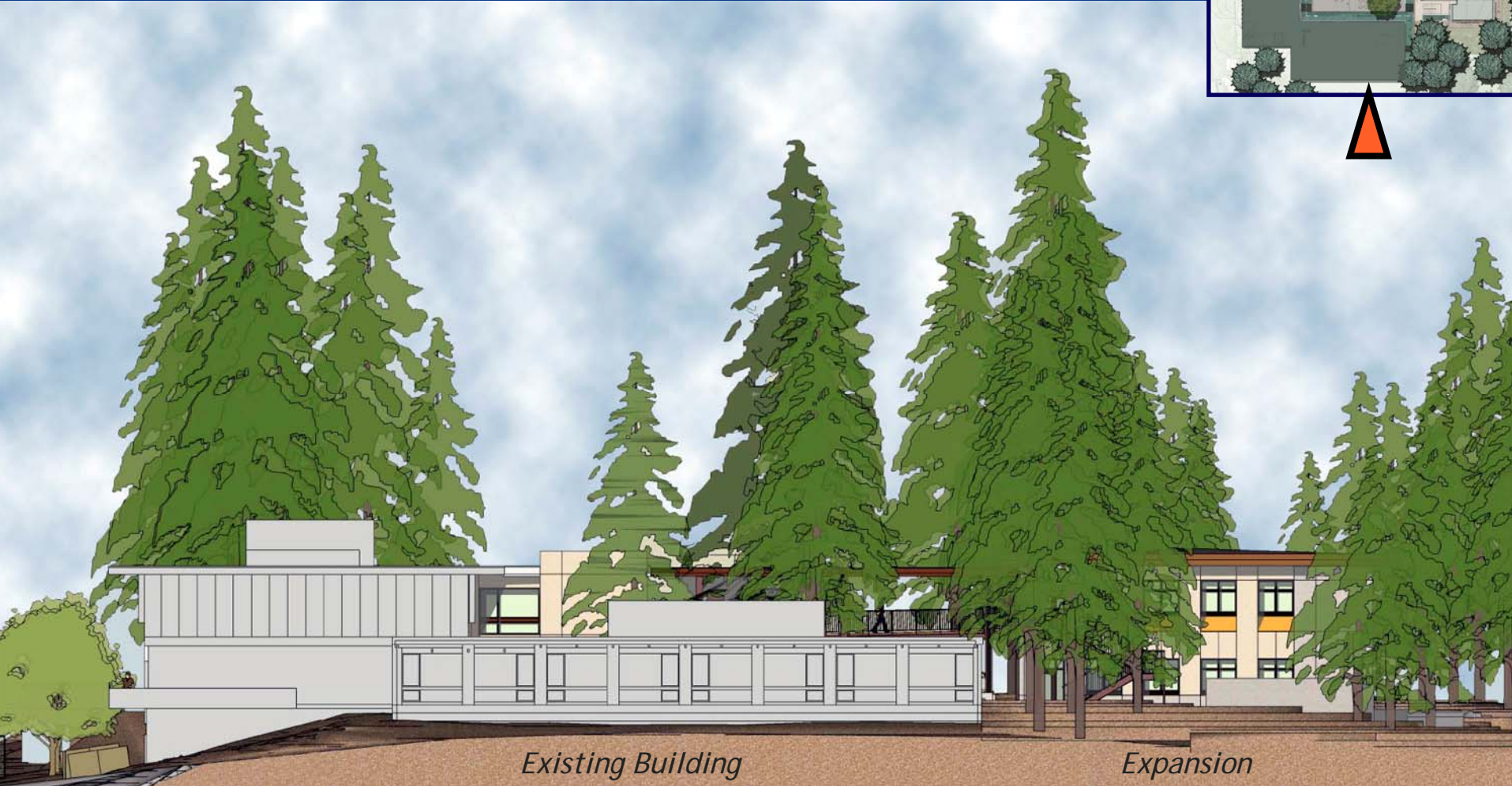


Existing Building

Expansion

Cowell Student Health Center Expansion

South Elevation



Existing Building

Expansion

Cowell Student Health Center Expansion

Sustainable Features



- targeting LEED™ Silver
 - estimate 36 points
- campus energy management system
- sustainable building materials
- cool roof technology
- water conservation
 - *less* water use than existing building
- landscape design
 - appropriate planting
 - efficient irrigation system
 - re-use of existing paving bricks
 - integrated storm water management
- student initiative for further features

Cowell Student Health Center Expansion

CEQA Status



- Initial Study/
Mitigated Negative Declaration
- 30-day Public Review Period
 - closed December 4, 2007
- comment letters
 - two from agencies & jurisdictions
 - two from individuals
- potential significant impacts in aesthetics, biological resources, hydrology/water quality, traffic & circulation
 - all mitigated to a less-than-significant level
 - additional mitigations for air quality, biological resources, cultural resources, noise, traffic & circulation

Cowell Student Health Center Expansion



Cowell Student Health Center Expansion



