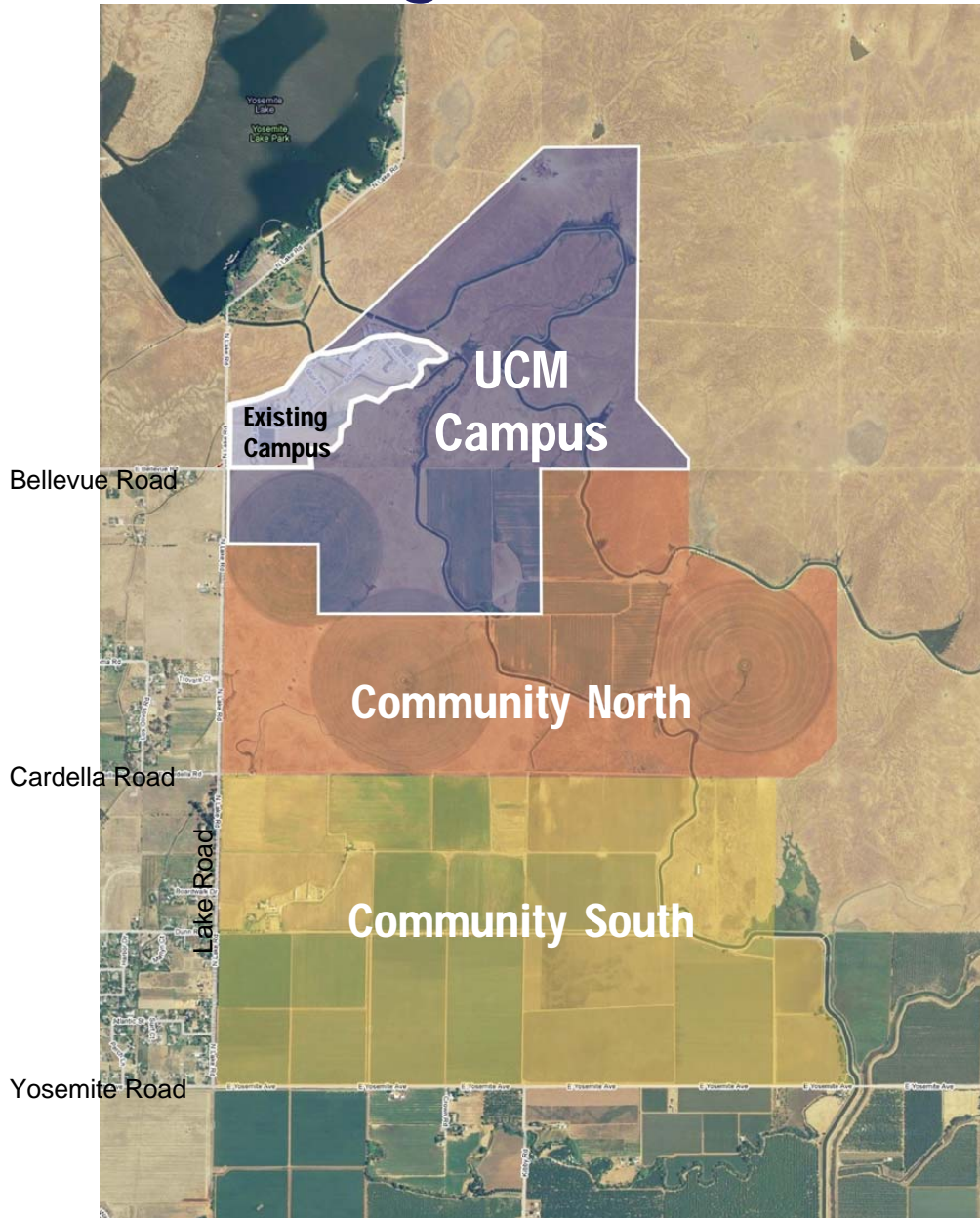


# UC Merced Tomorrow



Update to the Regents  
Grounds & Buildings Committee  
September 16, 2008

# Planning Areas



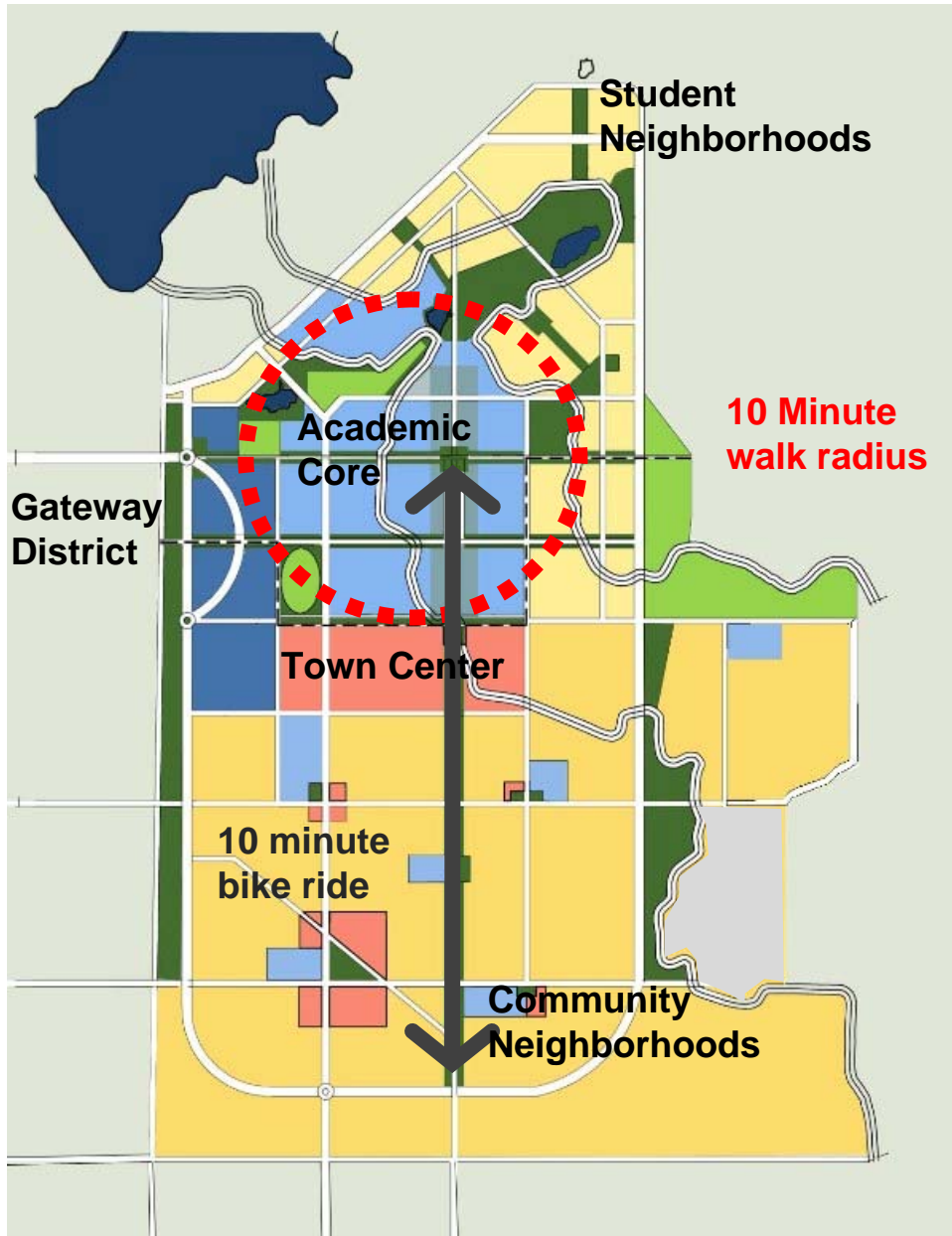
Existing Campus  
104 acres

New UC Merced  
Campus  
815 acres

Community North  
876 acres

Community South  
1,118 acres

# Reorganized Plan Concepts



Community  
Building

Creating Unique  
Market Identity:

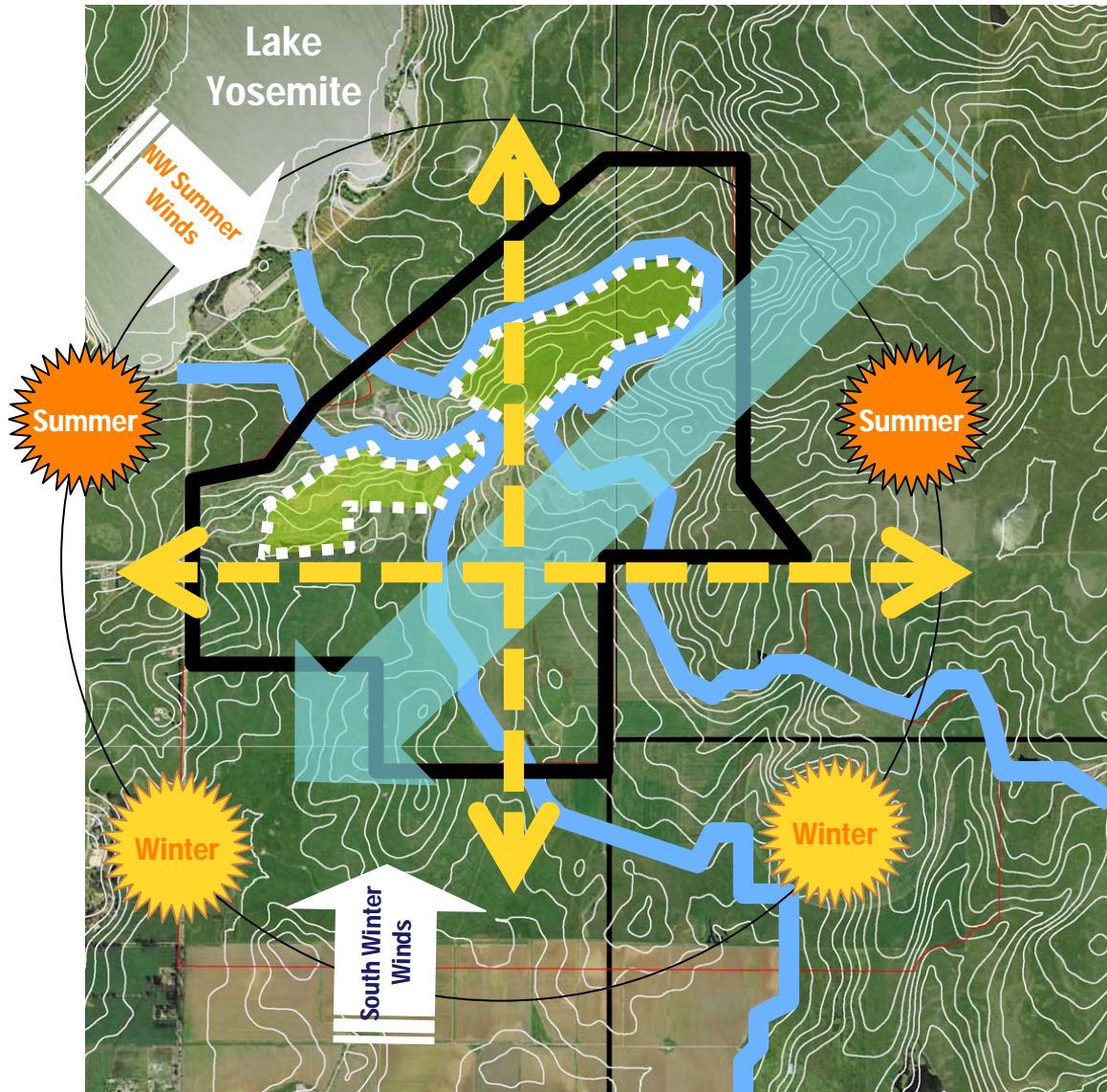
- Sustainable
- Walkable
- Innovative
- Synergistic

Creating Value

Capturing Value



# Physical Determinates



Natural topography running NE to SW

Summer breezes off Lake Yosemite

Canals define development zones

The “Bowls” capture storm water flow

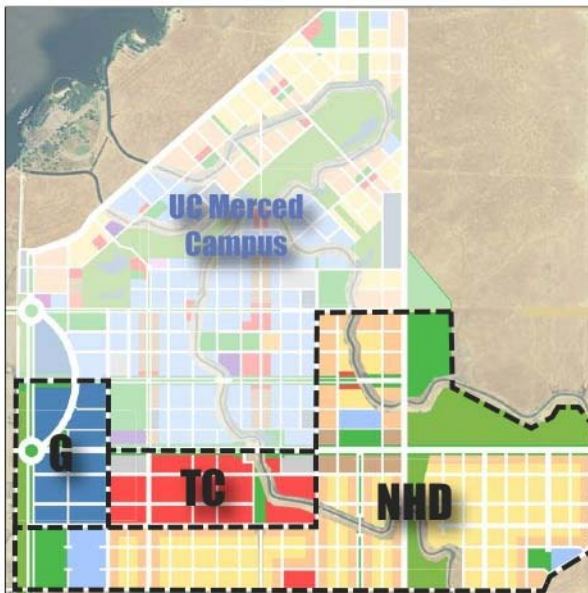
320 days of sun influence the grid



# Campus and Community



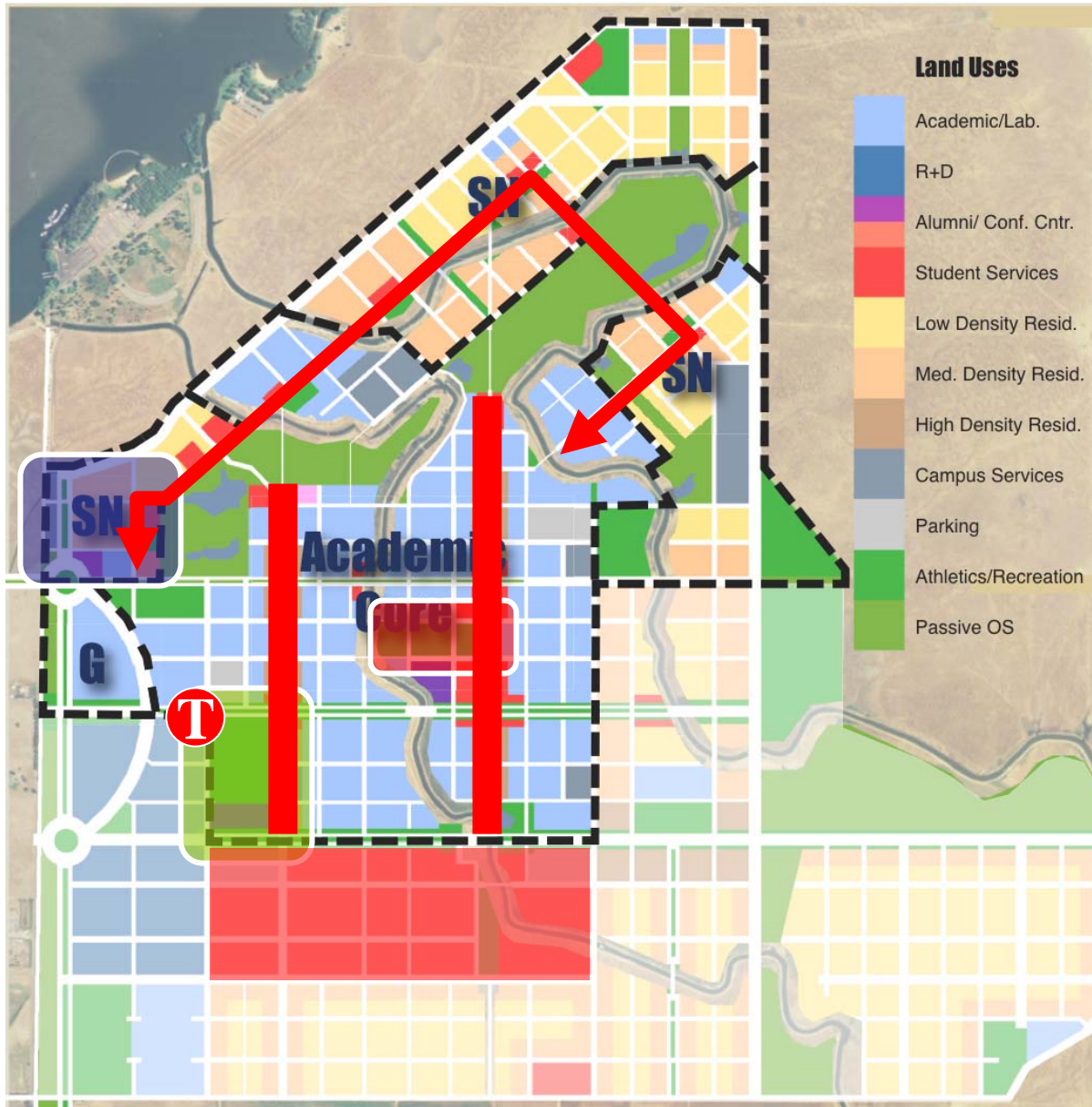
UC Merced  
Campus



University  
Community  
North



# Campus Organization



Academic Core  
200 acres

Campus Services  
40 acres

Student  
Neighborhoods  
220 acres

Open Space, Athletics  
and Recreation  
240 acres

Parking (on-street, lots  
and structures)  
110 acres

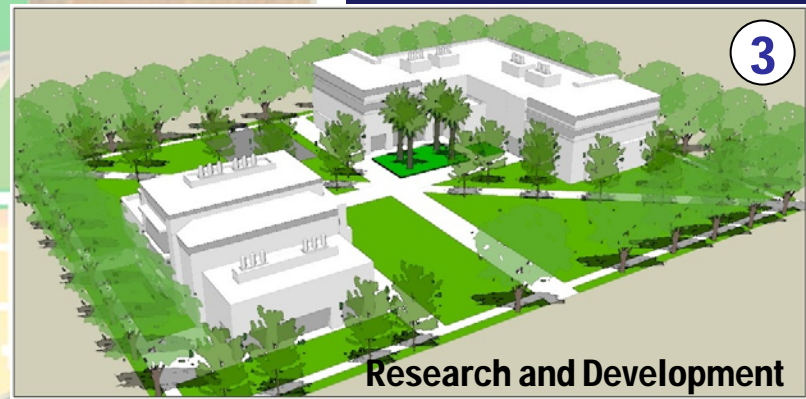
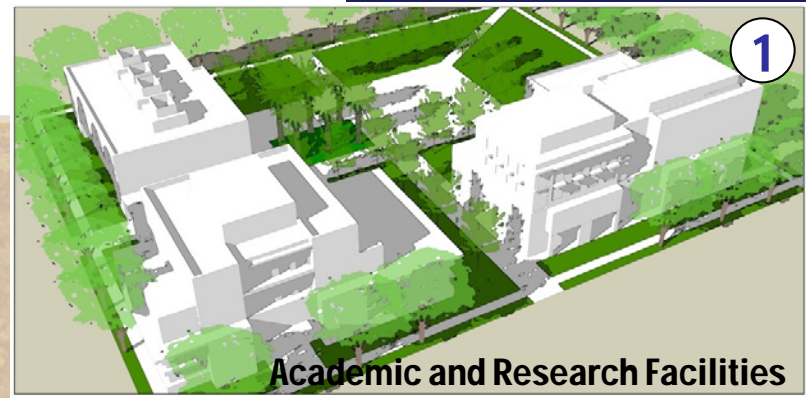
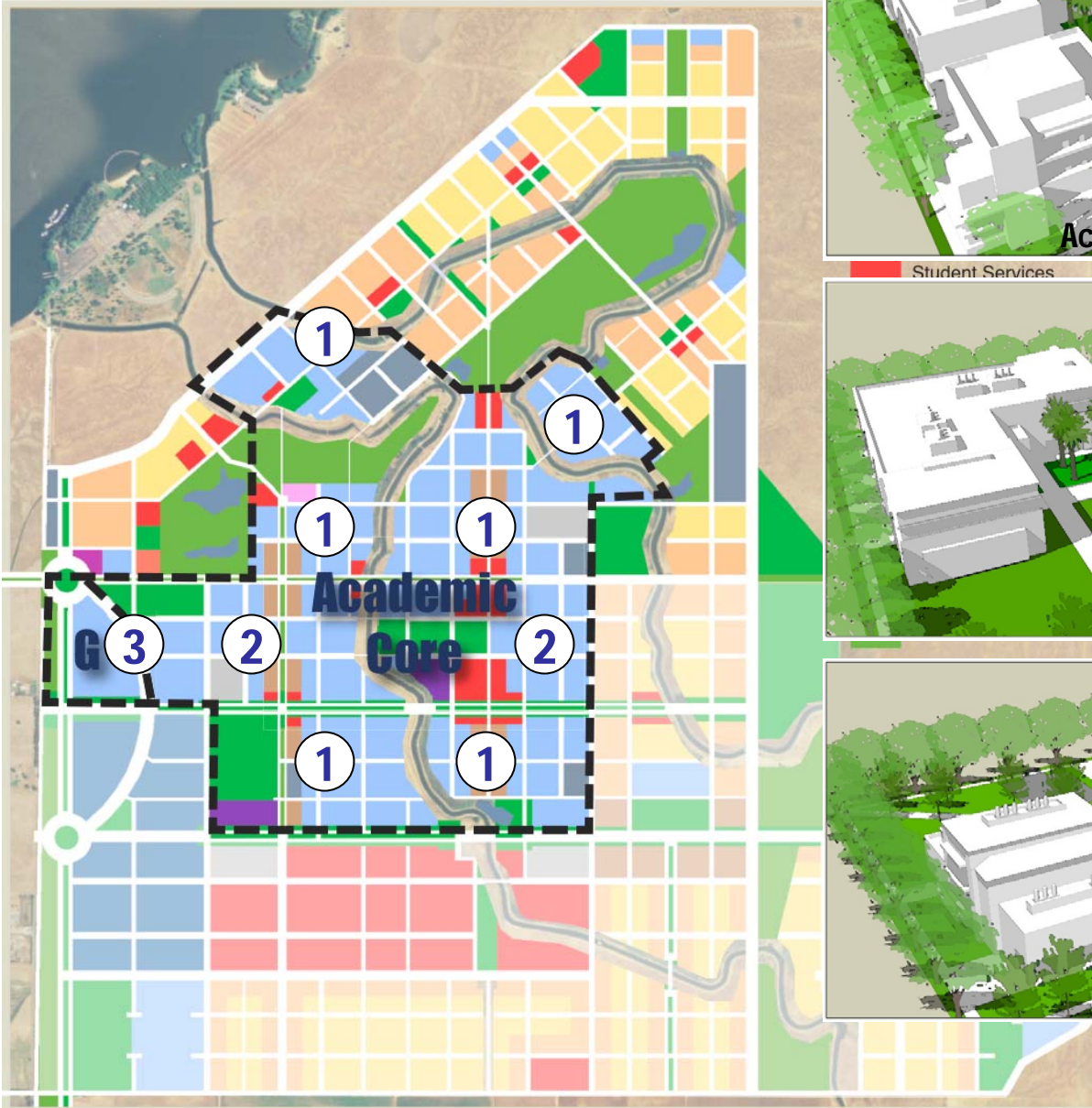


# Framework for a Sustainable Campus Community

1. Academy
2. Mobility
3. Communities
4. Environments
5. Services



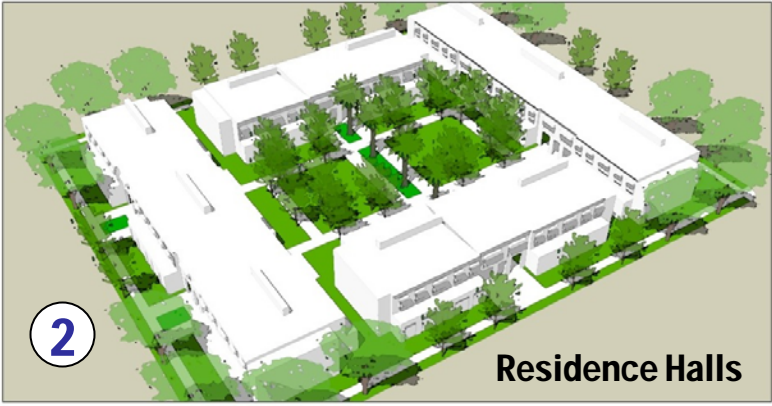
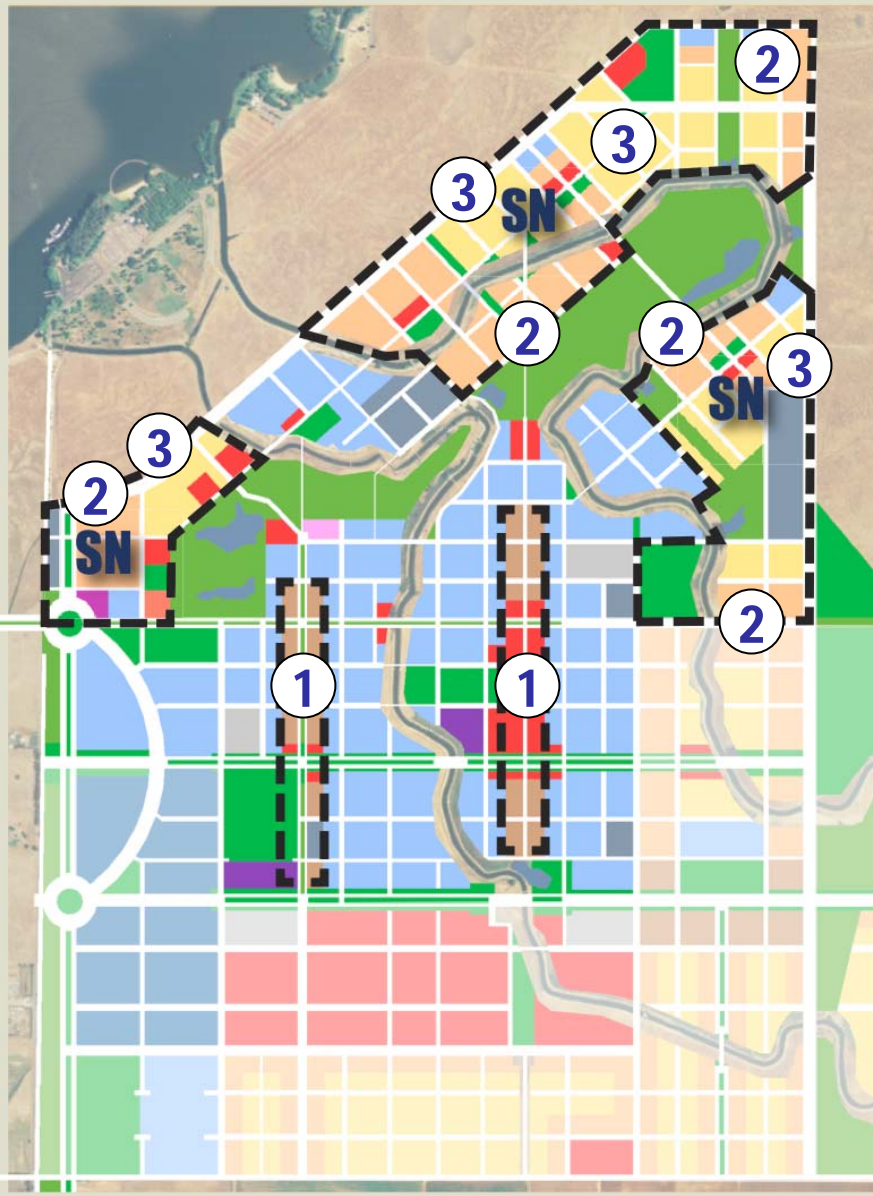
# 1. Academy



Collaborative Academic and Research Facilities, 6.25 MSF



# 2. Communities



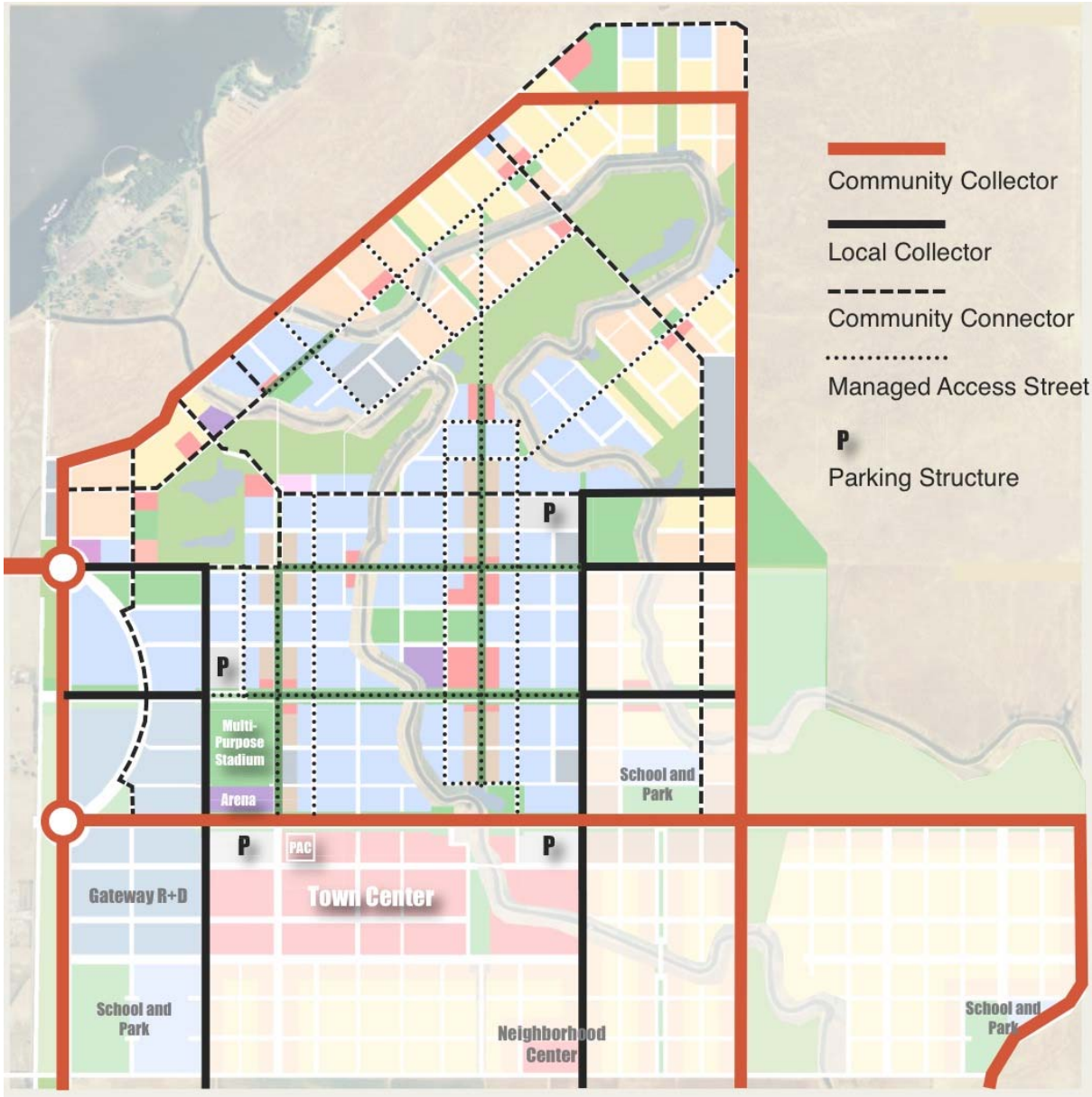


# 3. Environments





# 4. Mobility: Vehicles

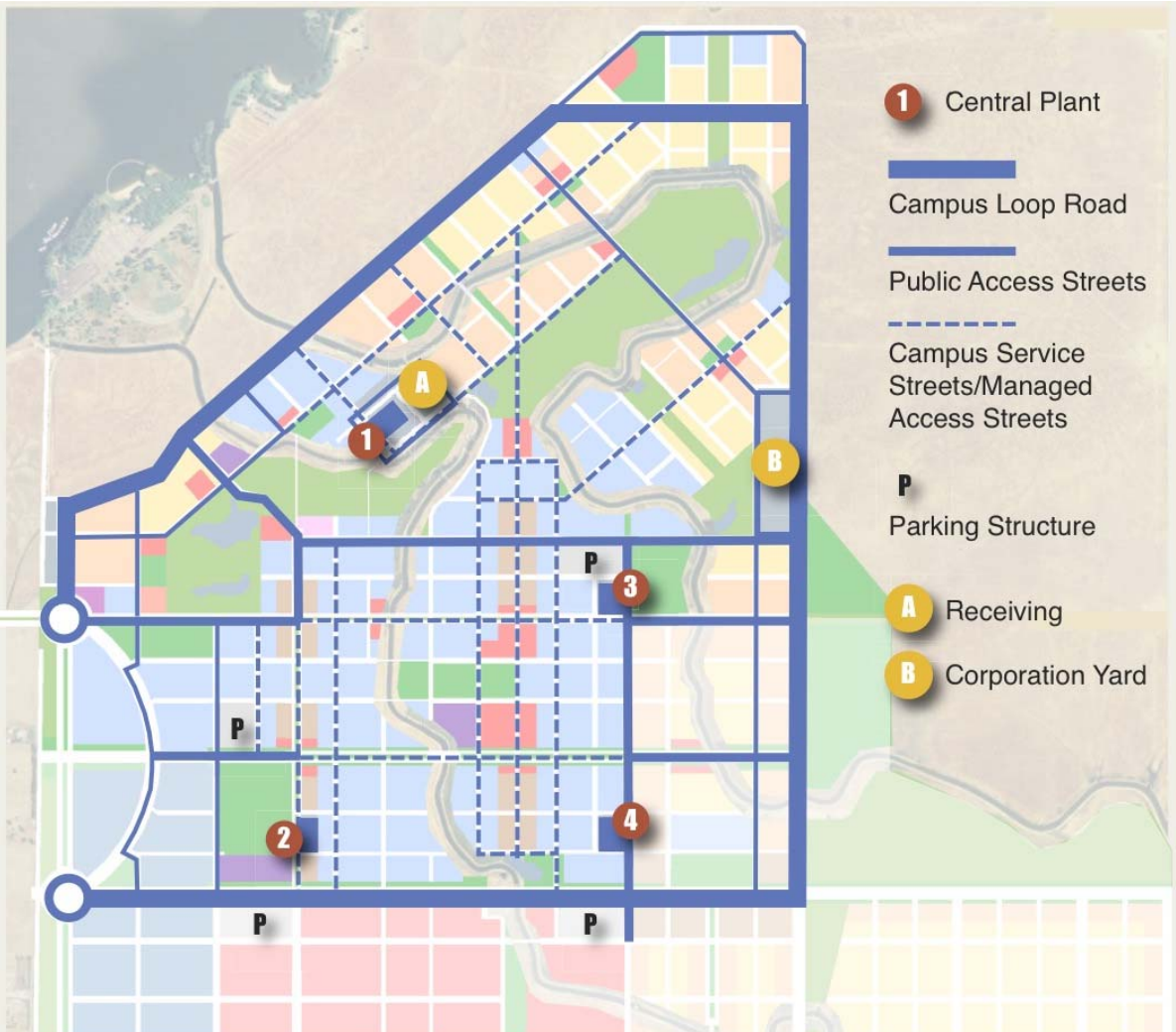


# 4. Mobility: Transit

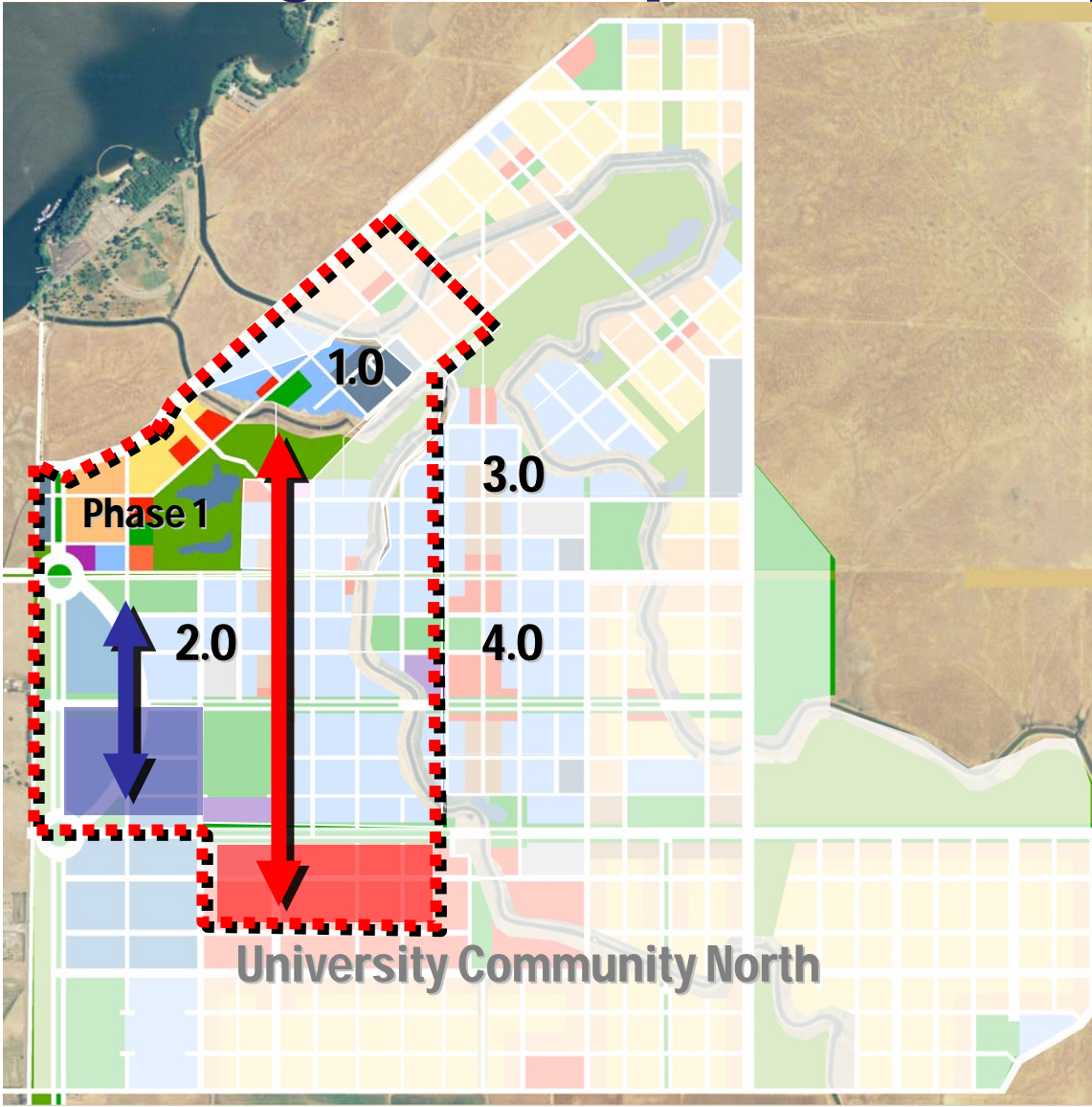




# 5. Services



# Growing the Campus



## UCM Phase 1

UCM 1.0 5,000

UCM 2.0 10,000

UCM 3.0 20,000

UCM 4.0 25,000



# Questions

