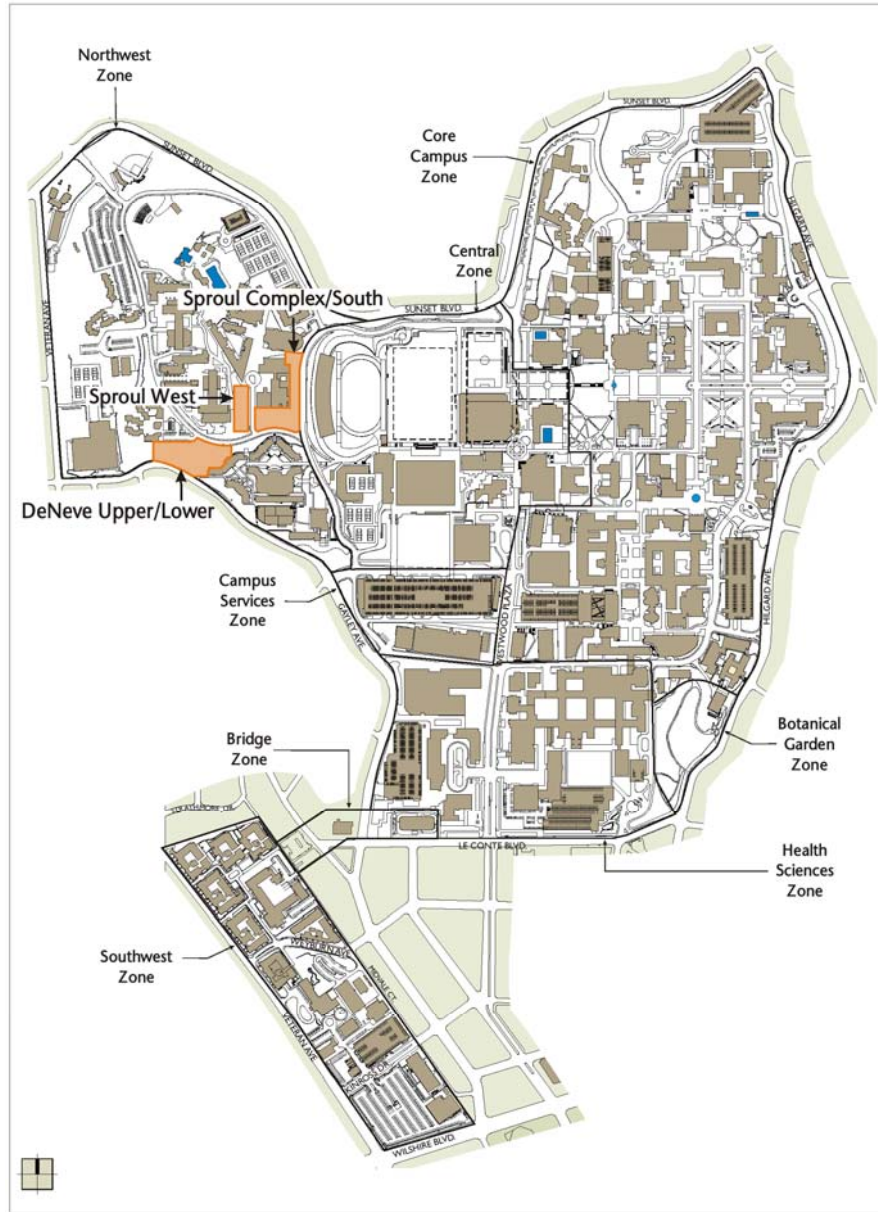


Committee on Grounds & Buildings Review

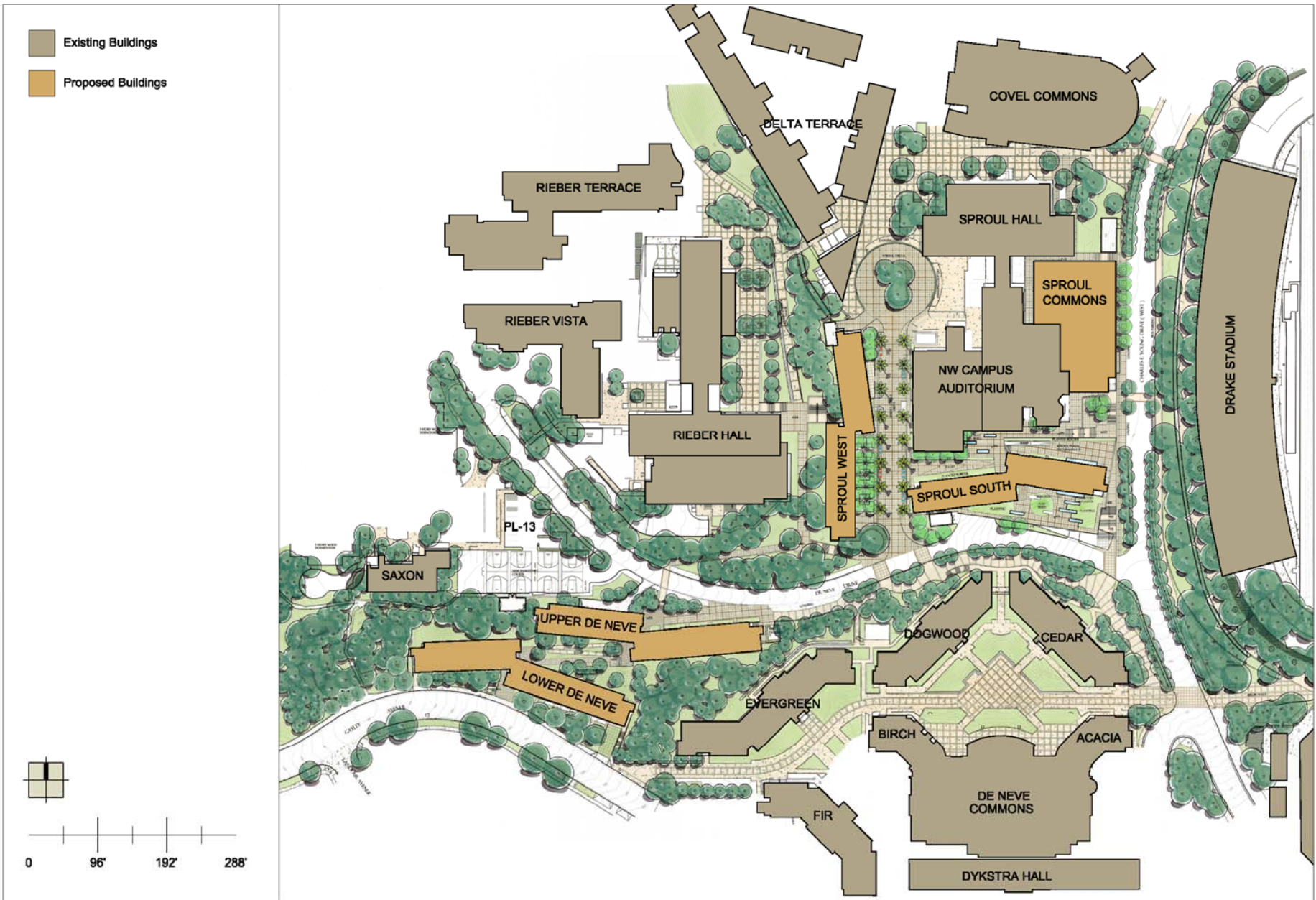


UCLA NORTHWEST HOUSING INFILL PROJECT
UCLA Capital Programs, September 16, 2008



- Existing Buildings
- Proposed Buildings
- Benign Use Area





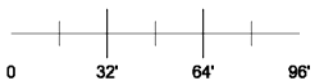
- Faculty Apartments
- Student Rooms
- Common Rooms
- Circulation
- Service



2nd Floor Plan
4 Faculty Apartments



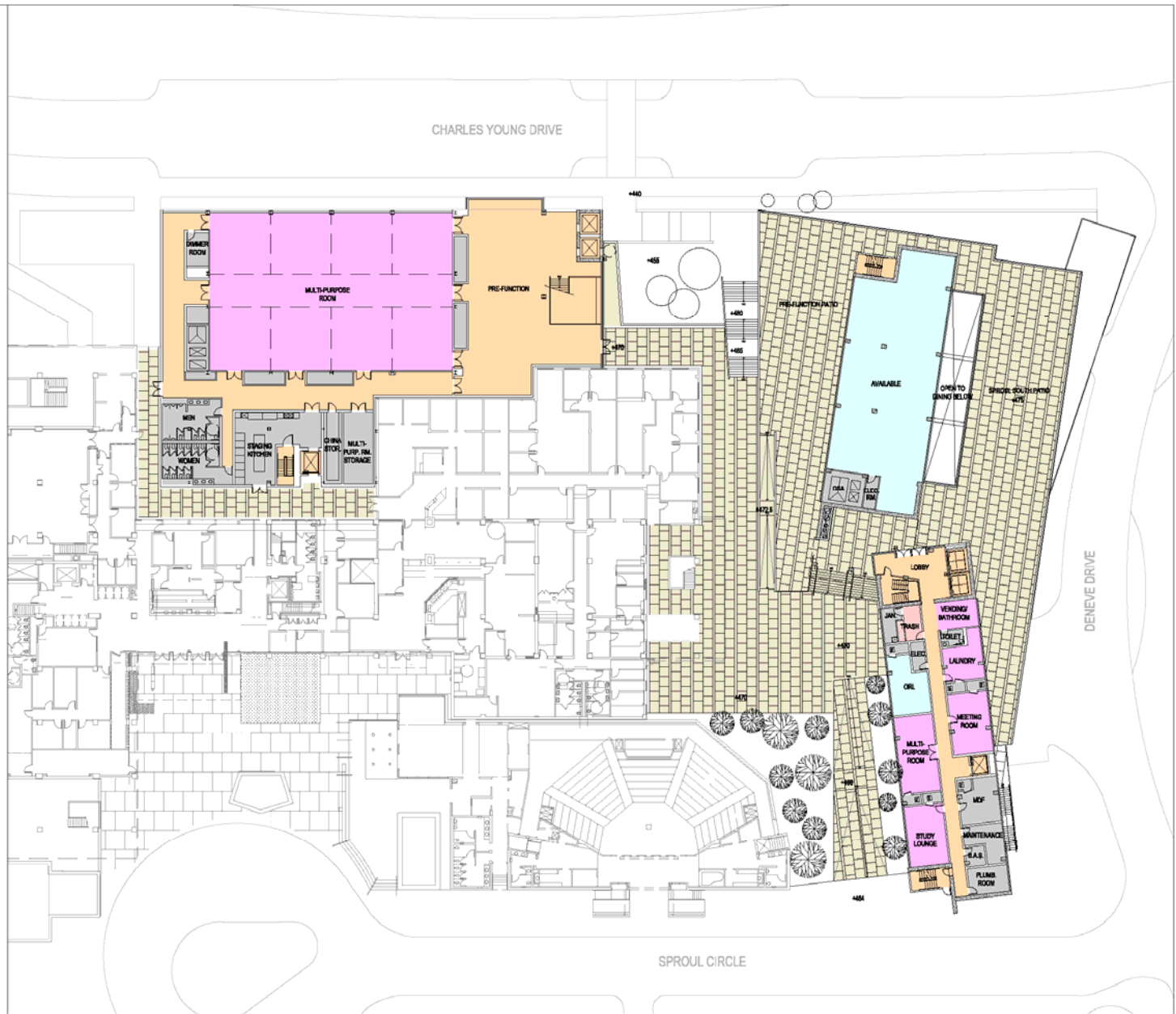
Typical (3-9) Floor Plan
31 Student Rooms: 61 Beds



- Meeting Rooms
- Kitchen
- Dining
- Service
- Circulation
- Patio



- Multi Purpose Rooms
- Dining
- Service
- Circulation
- Patio

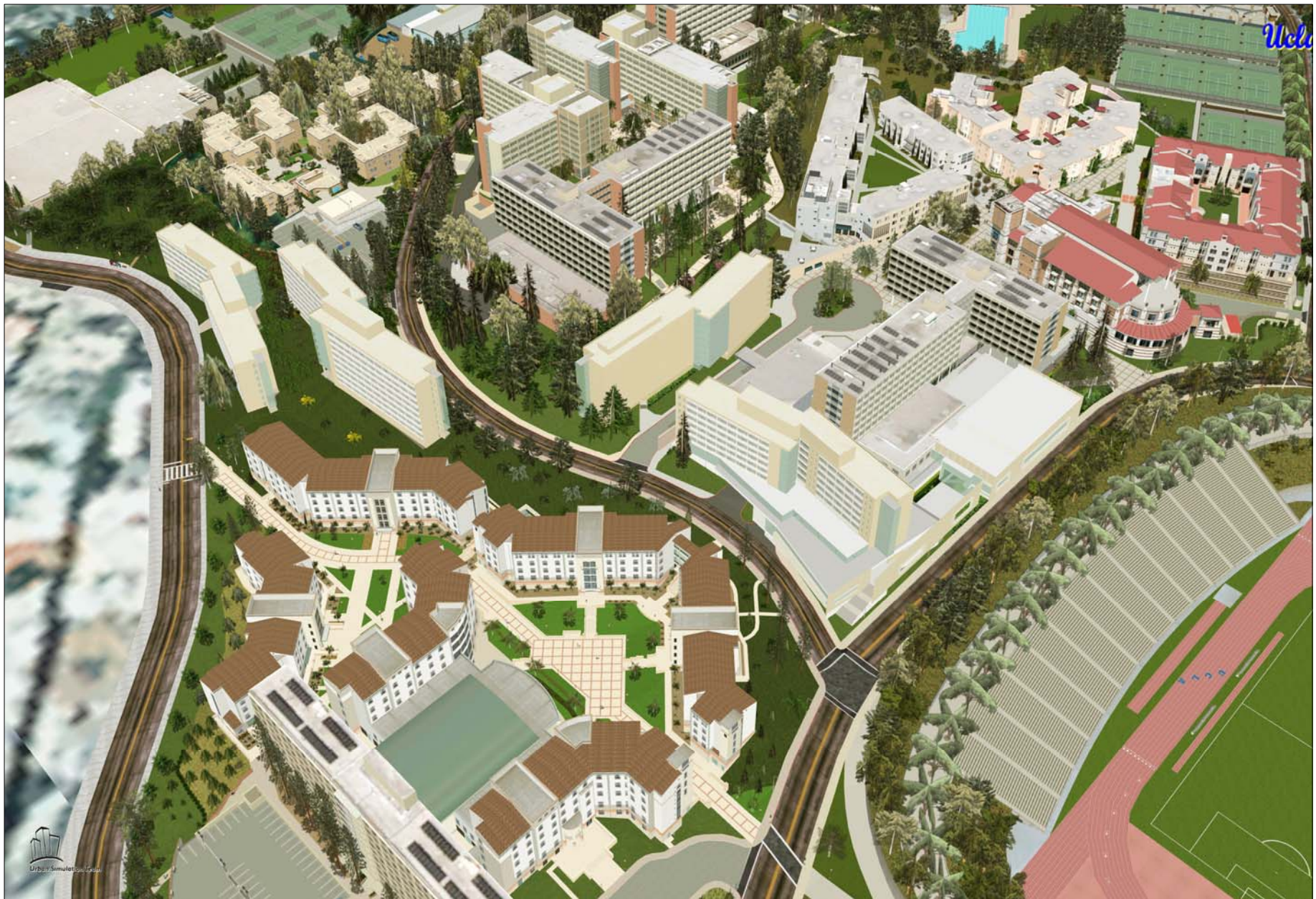




UCLA Capital Programs
September 16, 2008

Aerial View from Southeast - Existing

Northwest Housing
Infill Project





UCLA Capital Programs
September 16, 2008

Aerial View from Southwest - Existing

Northwest Housing
Infill Project



UCLA Capital Programs
September 16, 2008

Aerial View from Southwest - Proposed

Northwest Housing
Infill Project

Committee on Grounds & Buildings Review



UCLA NORTHWEST HOUSING INFILL PROJECT
UCLA Capital Programs, September 16, 2008