

University of California, Davis  
School of Medicine

# Telemedicine Resource Center & Rural PRIME Facility

**Larry Vanderhoef, Chancellor, UC Davis**  
**Michael Boyd, Executive Director FPD & C, UCDHS**  
**Tom Rush, Manager, FD & C**

Grounds & Buildings Committee  
January 15, 2008

# Telemedicine Resource Center & Rural PRIME Facility

## Project Scope

- Four-story addition to UC Davis School of Medicine Education Building
- 51,379 gross square feet
- Total project cost of \$36,000,000 (*includes approximately \$6M for equipment*)
- June 2010 completion



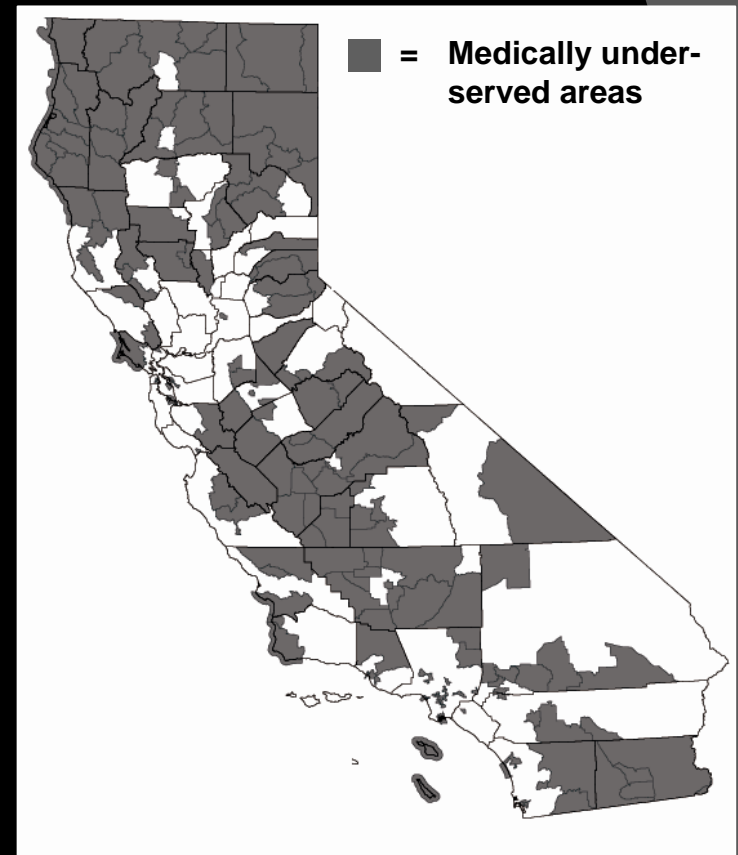
## Building on UC Davis strengths in Telemedicine

- First UC Davis telemedicine initiative dates back to 1992
- Tradition of outreach to underserved rural communities
- Builds on many successful partnerships



## Physician Shortage in Rural California

- By 2015, California will face a shortage of 17,000 doctors...many in rural areas



# Telemedicine Resource Center & Rural PRIME Facility

- Linkages to 100+ organizations
- 18,000 inpatient and outpatient video consultations
- Pediatric critical care / emergency services
- Telemedicine Learning Center
- Distance education
- FamilyLink
- Video interpreting



# Telemedicine Resource Center & Rural PRIME Facility

## Project Goals

- Provide a training resource for entire UC system
- Enhance learning opportunities for all medical students and other members of the healthcare team at UC Davis
- Facilitate implementation of Rural PRIME Program

Training the next generation of physicians to use telemedicine to improve the quality and accessibility of healthcare

# Telemedicine Resource Center & Rural PRIME Facility

## Key Program Elements

### Telemedicine Learning Center

- Smart classrooms
- Breakout rooms
- Mock exam rooms
- IS/ technology support

### Center for Virtual Care

- Simulation rooms and support
- Mock exam rooms

**TRC**PRIME  
Facility

### Telemedicine Consultation Center

- Consultation rooms
- Research laboratory
- Distance learning
- Offices

### Operations Center: California Telehealth Network

## Education Building Design Approval: June 2004

### ◎ *Foster cohesive image*

- Campus context
- Consistent use of materials (building and site)
- Detailing and fenestration

### ◎ *Complement urban design*

- Pedestrian connections
- Exterior spaces

### ◎ *Architectural interest*





# Telemedicine Resource Center & Rural PRIME Facility



Aerial Perspective

## Telemedicine Resource Center Design Goals

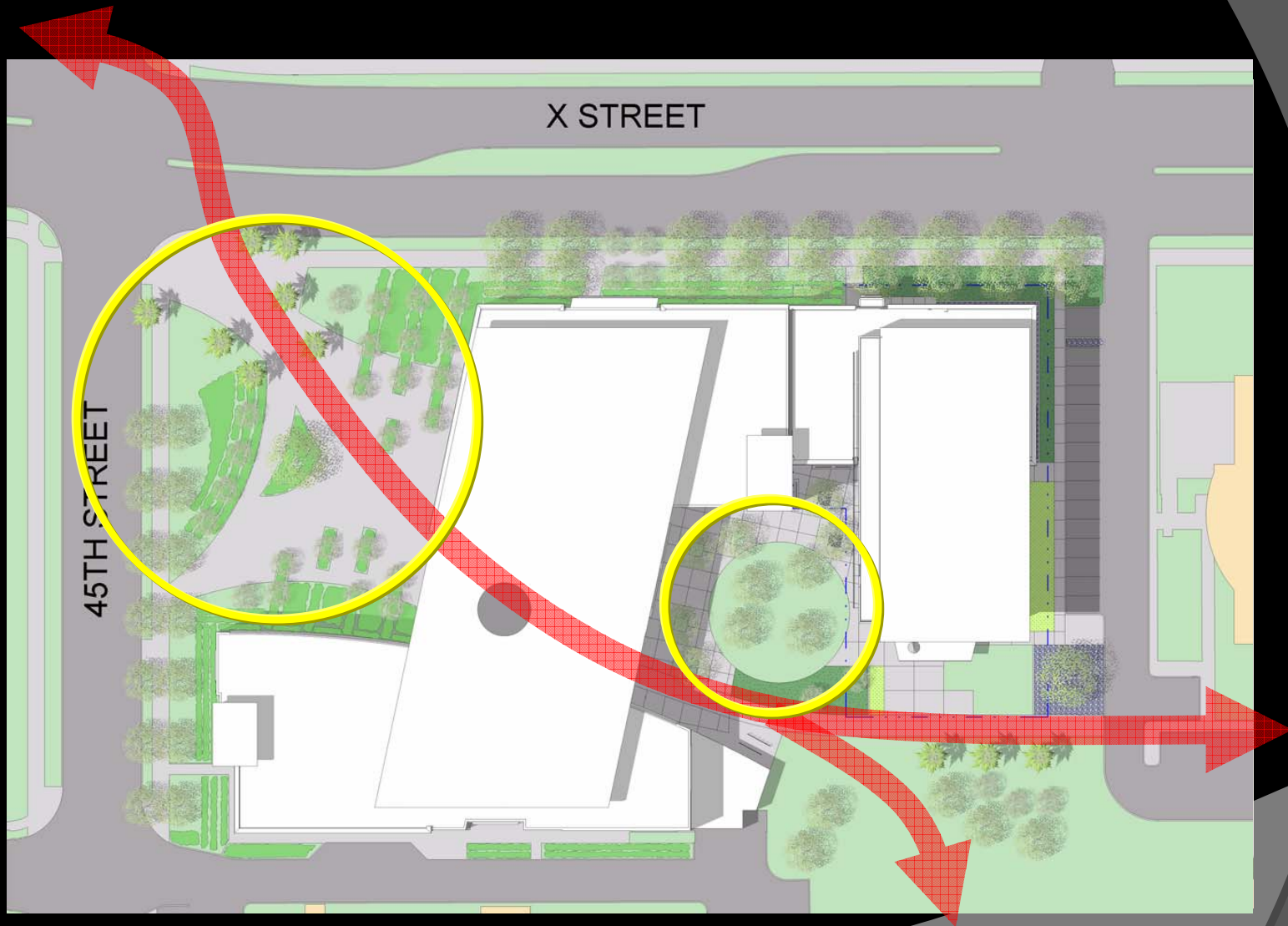
- ⦿ *Complementary Addition to the Education Building*
  - Materials
  - Detailing
  - Interior Circulation
- ⦿ *Reinforce Campus Urban Design*
  - Pedestrian connections
  - Definition of exterior spaces
- ⦿ *Architectural Interest and Identity*

# Telemedicine Resource Center & Rural PRIME Facility



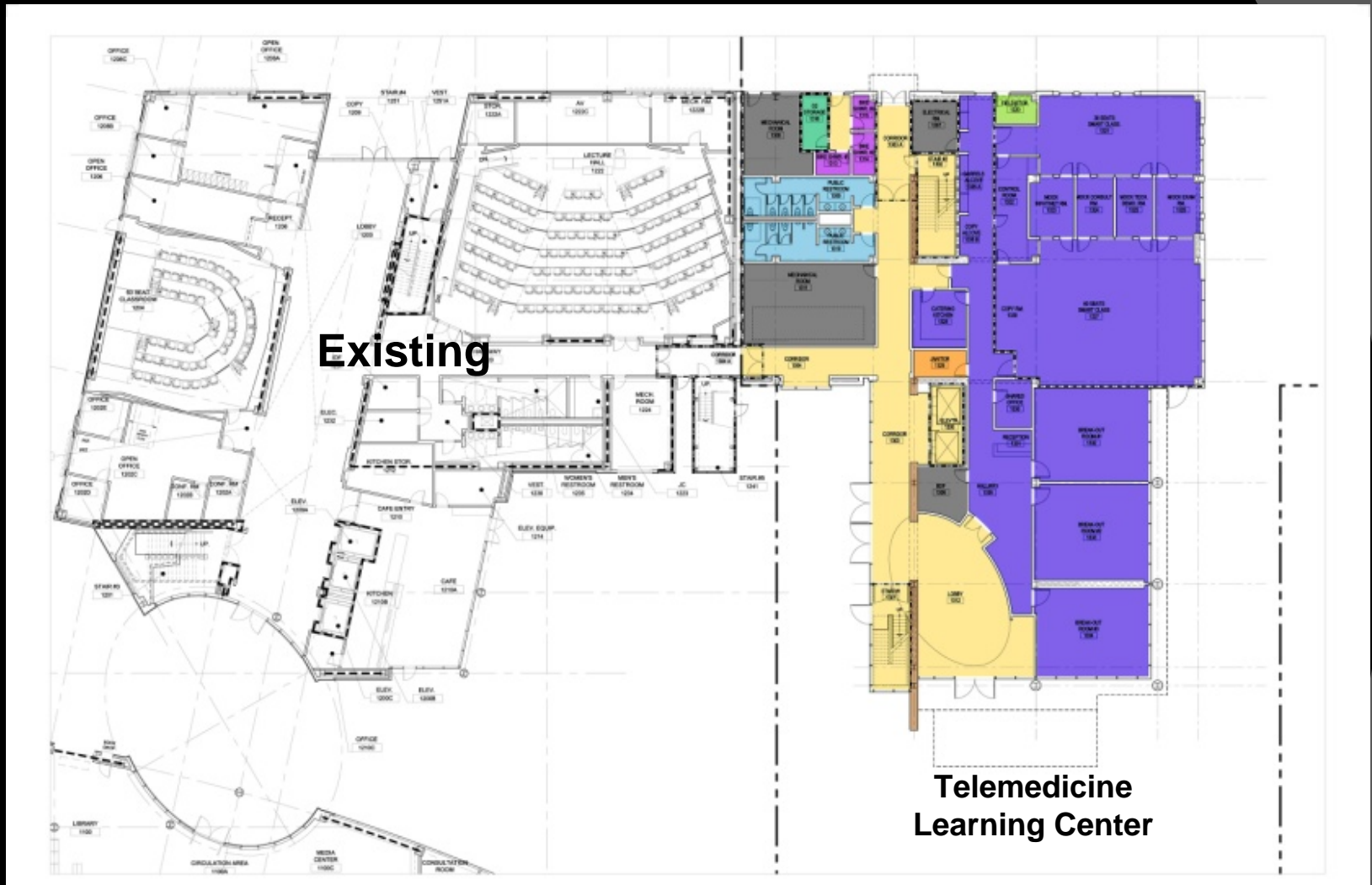
Project Site and Context

# Telemedicine Resource Center & Rural PRIME Facility



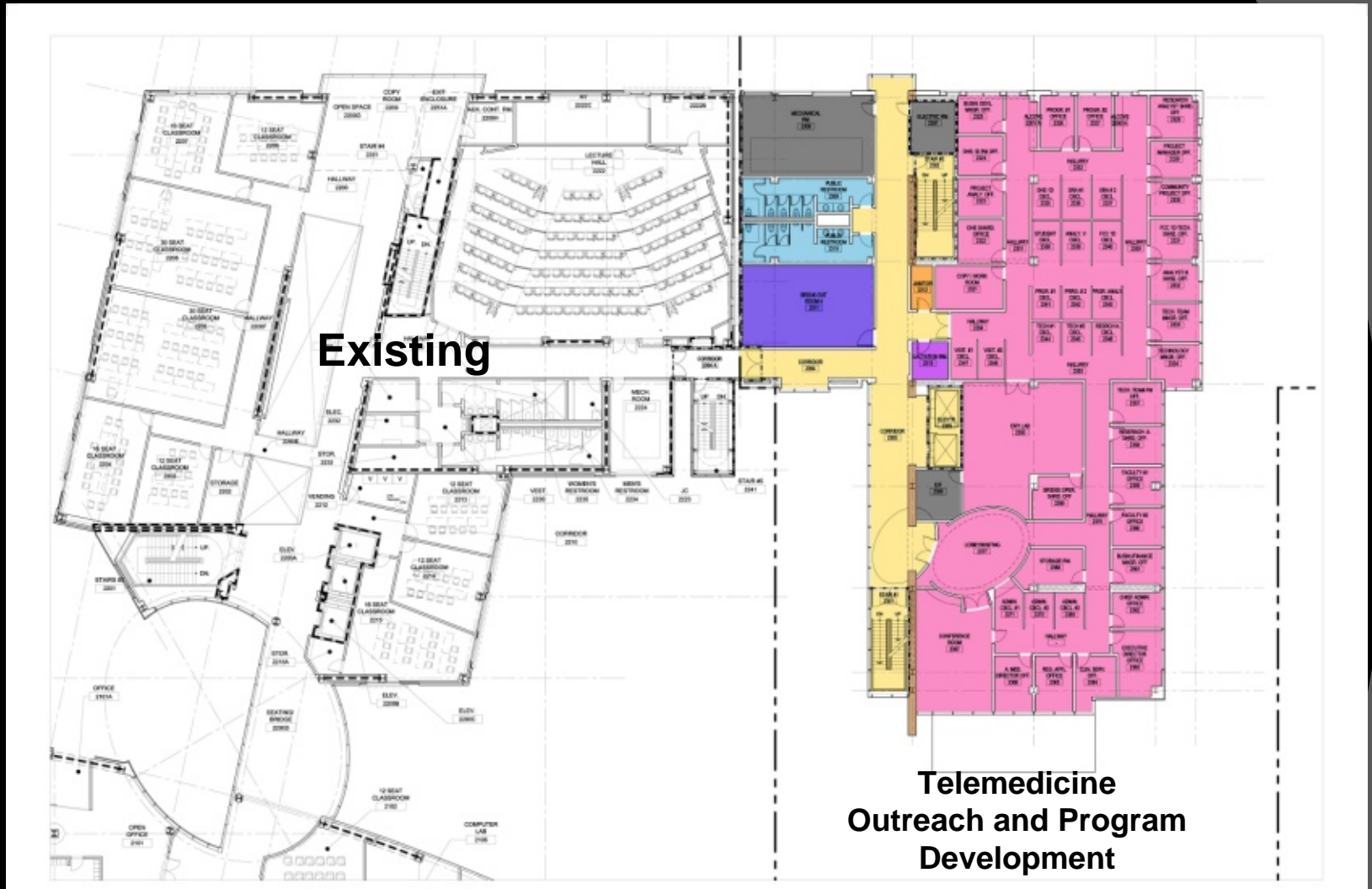
Urban Design and Pedestrian Circulation

# Telemedicine Resource Center & Rural PRIME Facility



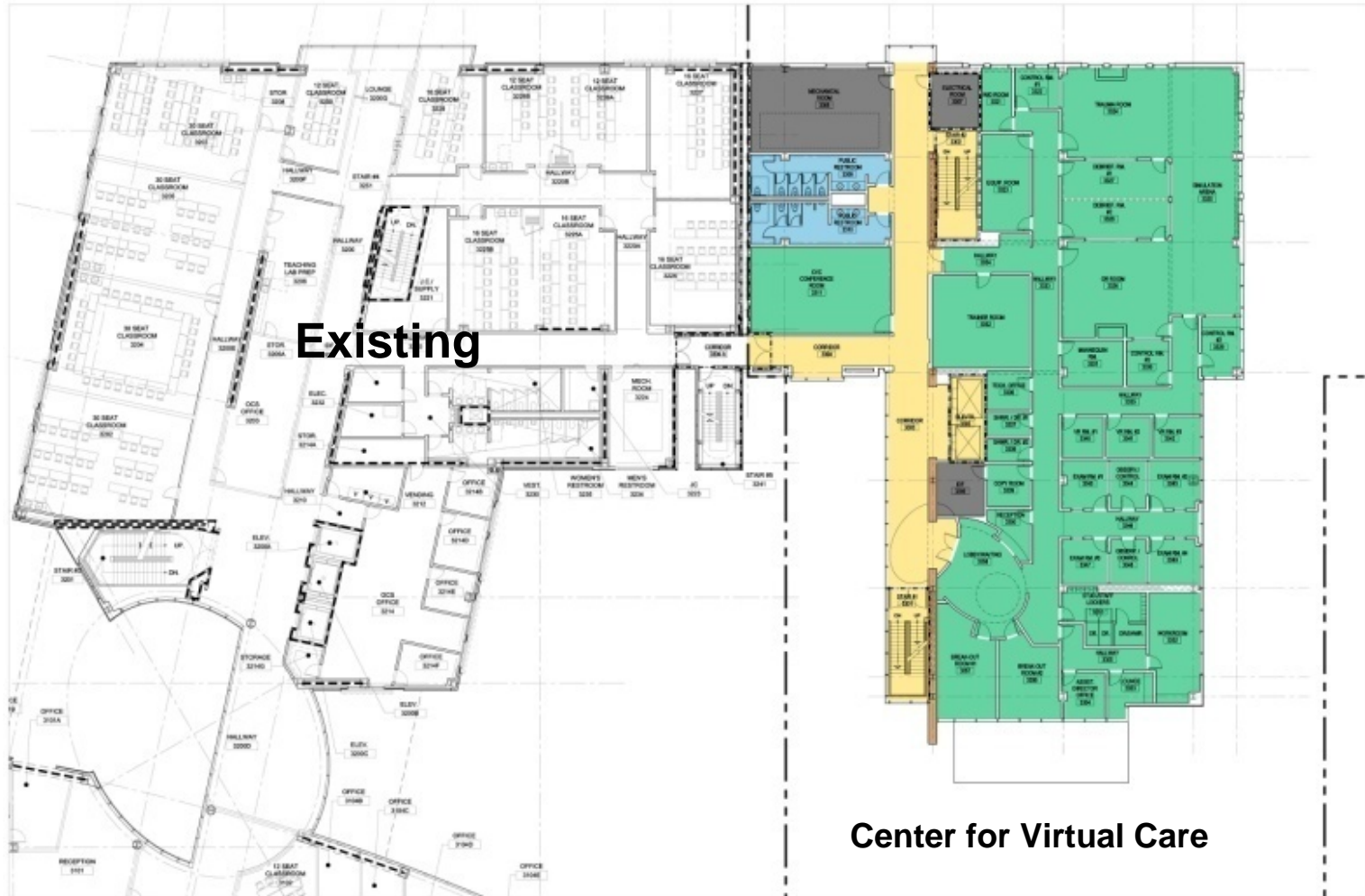
Floor Plan: 1<sup>st</sup> Floor

# Telemedicine Resource Center & Rural PRIME Facility



Floor Plan: 2<sup>nd</sup> Floor

# Telemedicine Resource Center & Rural PRIME Facility

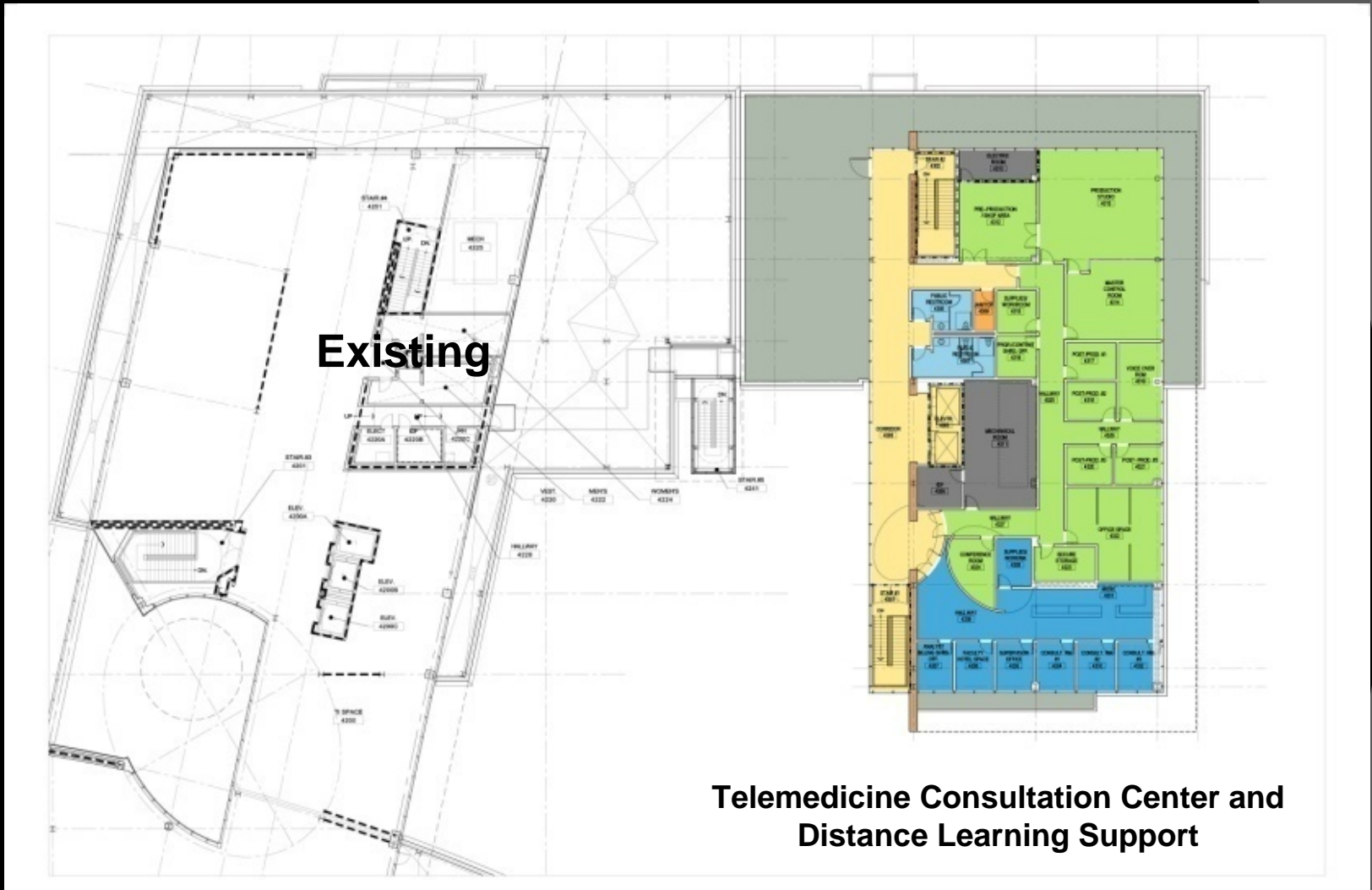


Existing

Center for Virtual Care

Floor Plan: 3<sup>rd</sup> Floor

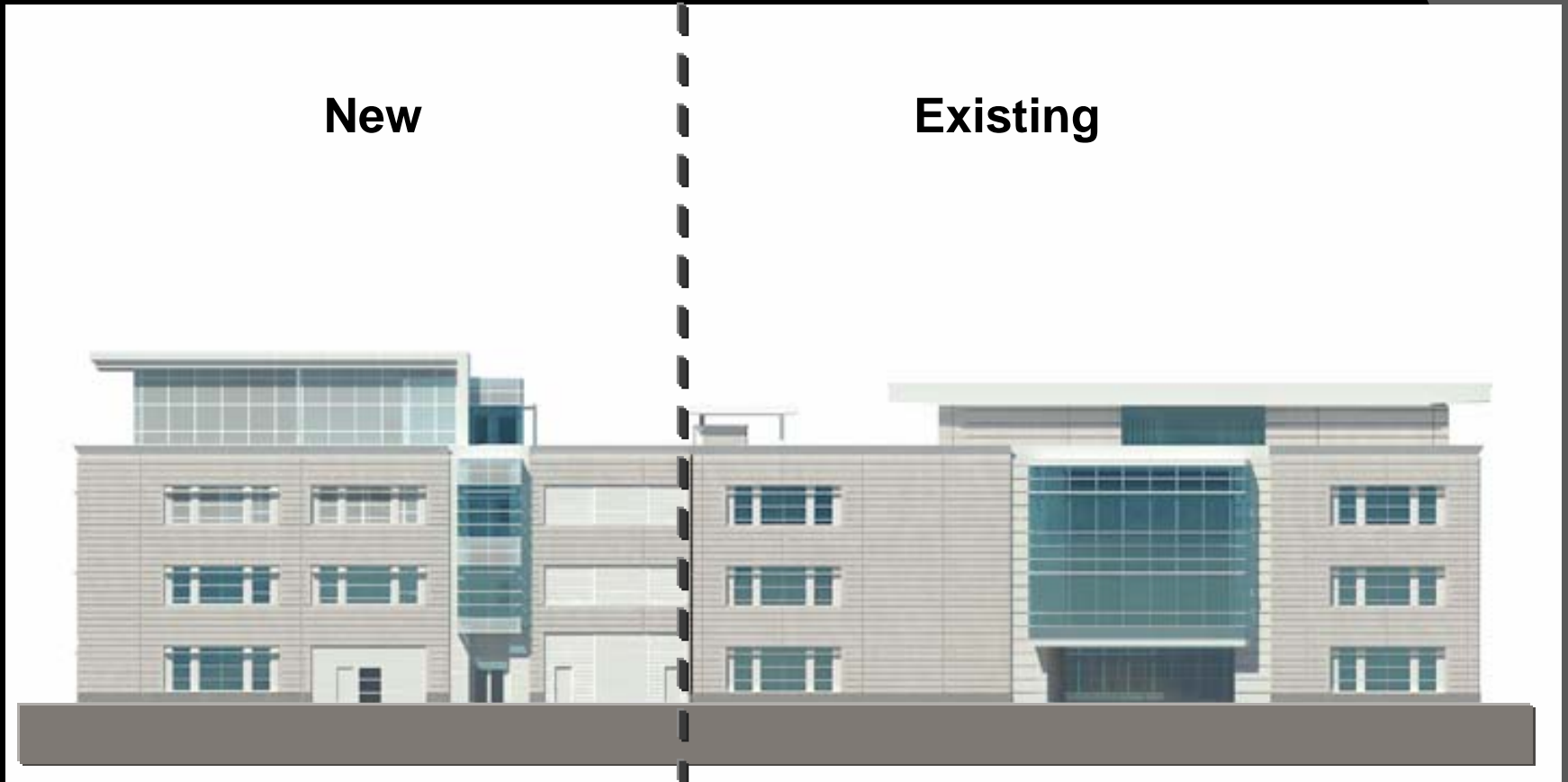
# Telemedicine Resource Center & Rural PRIME Facility



Floor Plan: 4<sup>th</sup> Floor



# Telemedicine Resource Center & Rural PRIME Facility



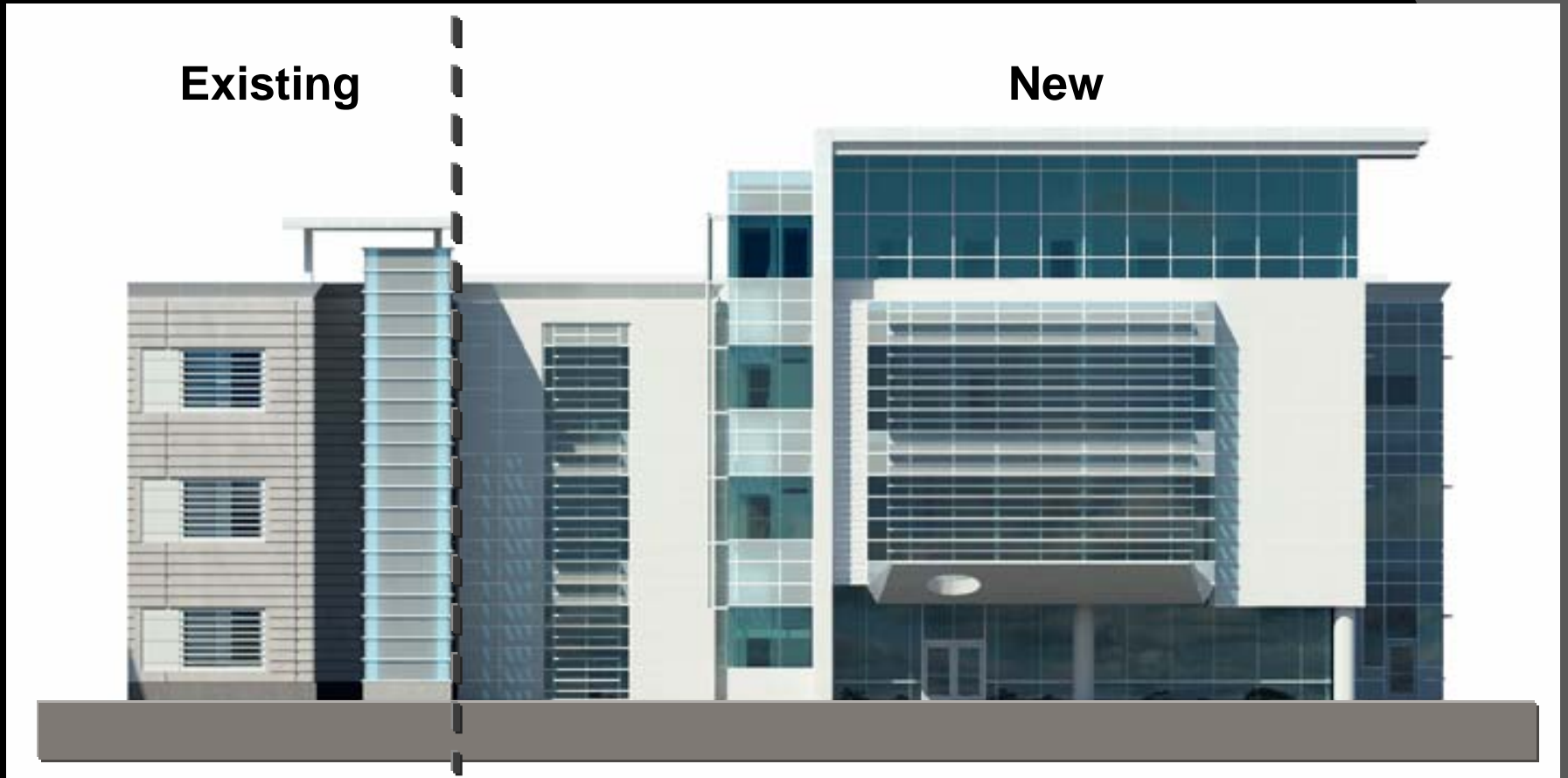
North Elevation

# Telemedicine Resource Center & Rural PRIME Facility



East Elevation

# Telemedicine Resource Center & Rural PRIME Facility



South Elevation

# Telemedicine Resource Center & Rural PRIME Facility



View from the Northeast

# Telemedicine Resource Center & Rural PRIME Facility



View from the East

# Telemedicine Resource Center & Rural PRIME Facility



View from the Courtyard

# Telemedicine Resource Center & Rural PRIME Facility

---

- ***Education Building Tiered Focused EIR in 2004 included Phase 2 (aka Telemedicine Resource Center & Rural PRIME Facility)***
- ***Tiered Focused EIR: Public Review 4/12/04 – 5/26/04***
  - Significant and Unavoidable Impacts:
    - Transportation (Increased cumulative traffic)
    - Air Quality (Increased cumulative traffic)
- ***Project conforms to UC Green Building Policy Silver***
  - Energy Performance
  - Waste Diversion
  - Resource Re-use
  - Recycled Building Materials
  - IAQ Management
  - Low Emission Materials
  - Daylighting

# Telemedicine Resource Center & Rural PRIME Facility



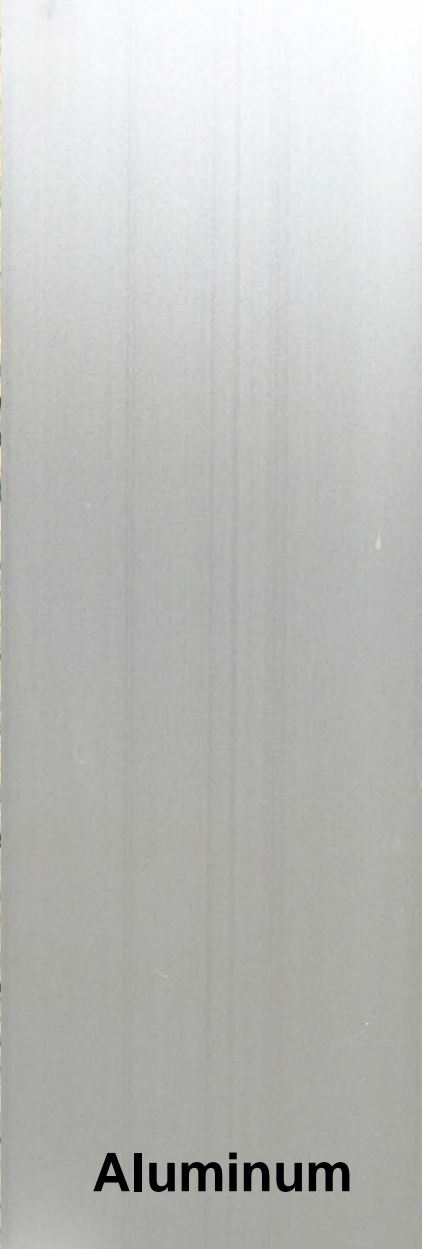
Questions and Discussion







**Precast Concrete**



**Aluminum**



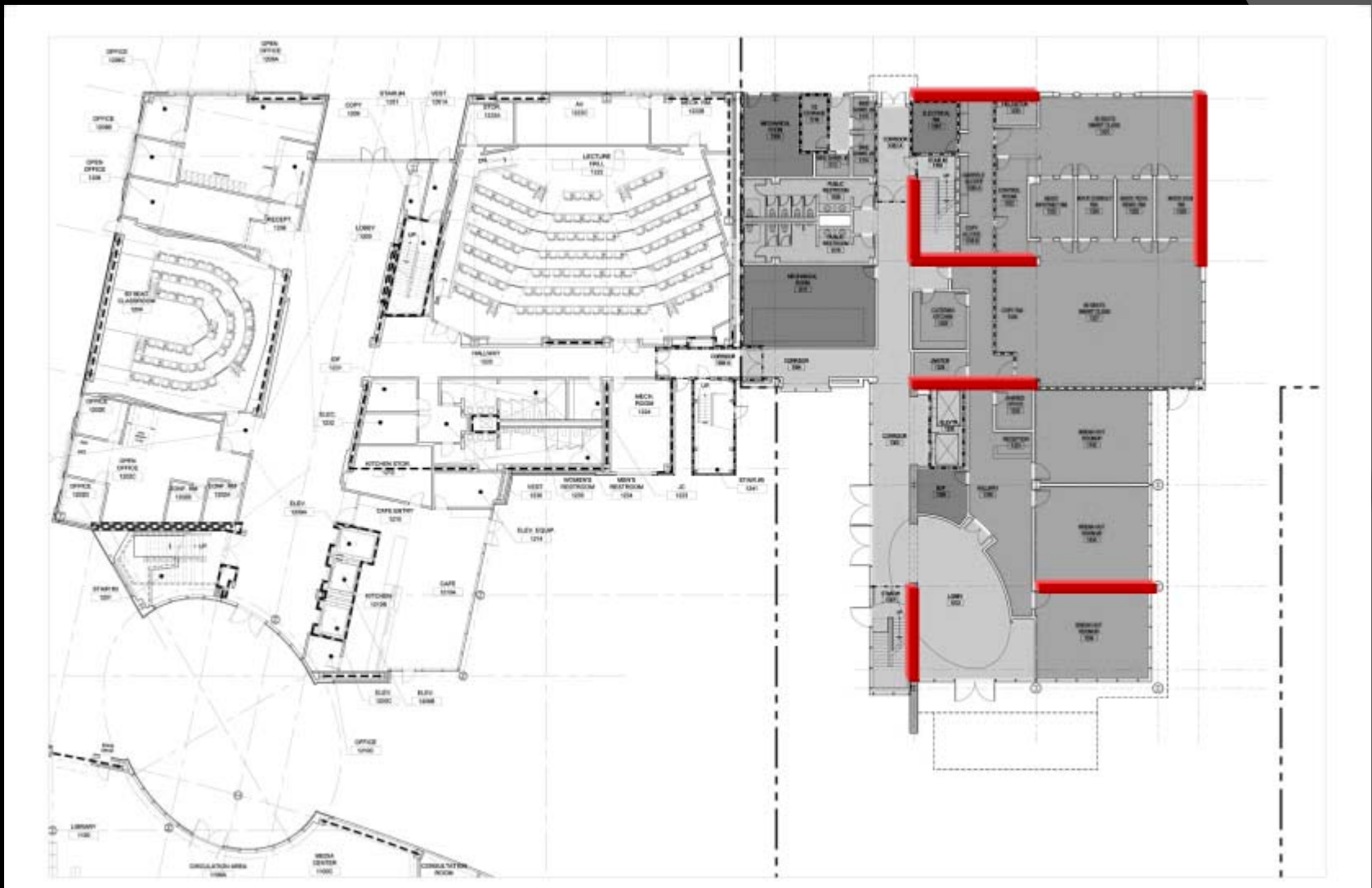
**Painted Metal**



**Tinted Glass**

**Materials**

# Telemedicine Resource Center & Rural PRIME Facility



Seismic Braced Frames