

Law School Infill

Berkeley

Grounds & Buildings July 15, 2008



Law School Infill

Berkeley

Grounds & Buildings July 15, 2008



Project purpose

Space needs are constraining the Law School's growth and development.

- The faculty size up by 25%, with more to come to achieve competitiveness
- Expanding clinical education offerings
- Six new interdisciplinary think tanks launched for problem solving important to the state, nation, world
- Improving the quality of the student and faculty experience

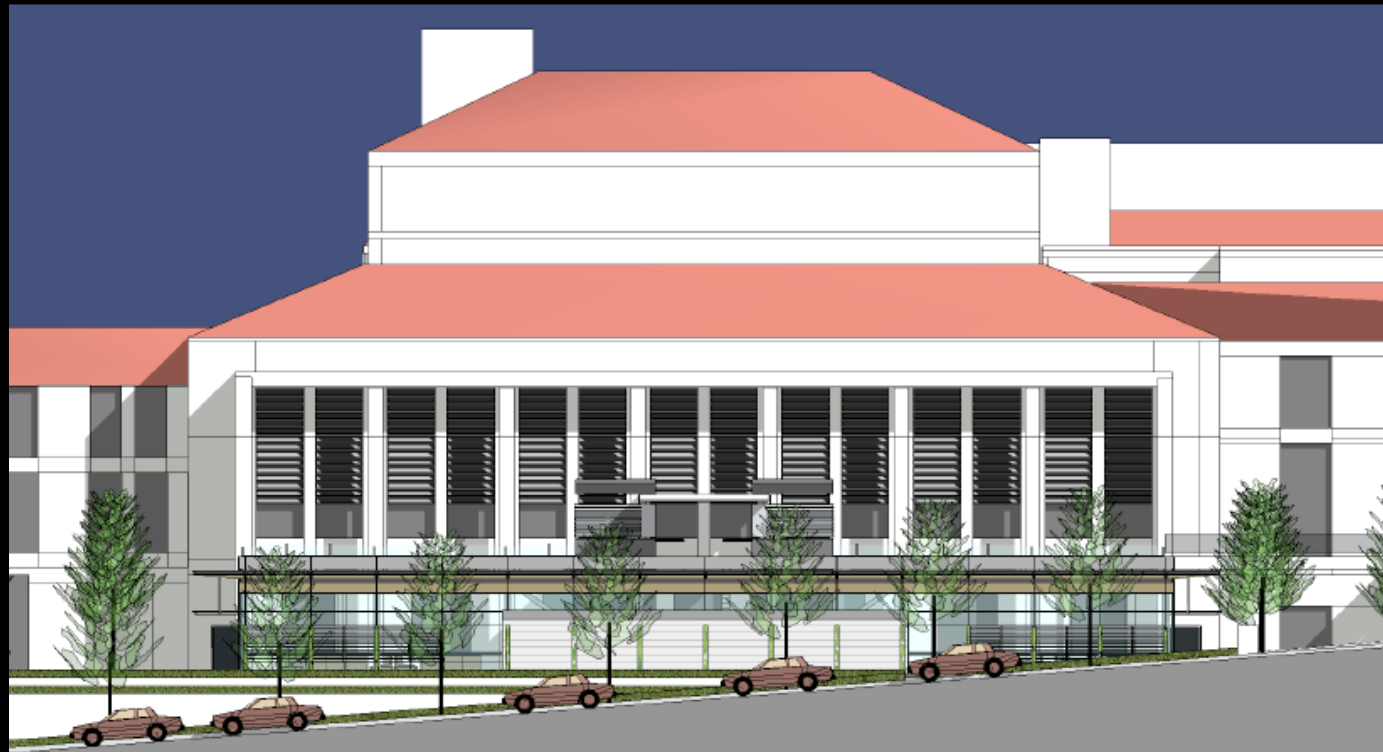
Continued success relies upon completion of the Infill Project. More space is a critical first step to allow continued expansion of the faculty, curriculum and clinical education, library collections, research, student services and support.

Importantly, the quality of the student and faculty experience depends upon improvement to the built environment.

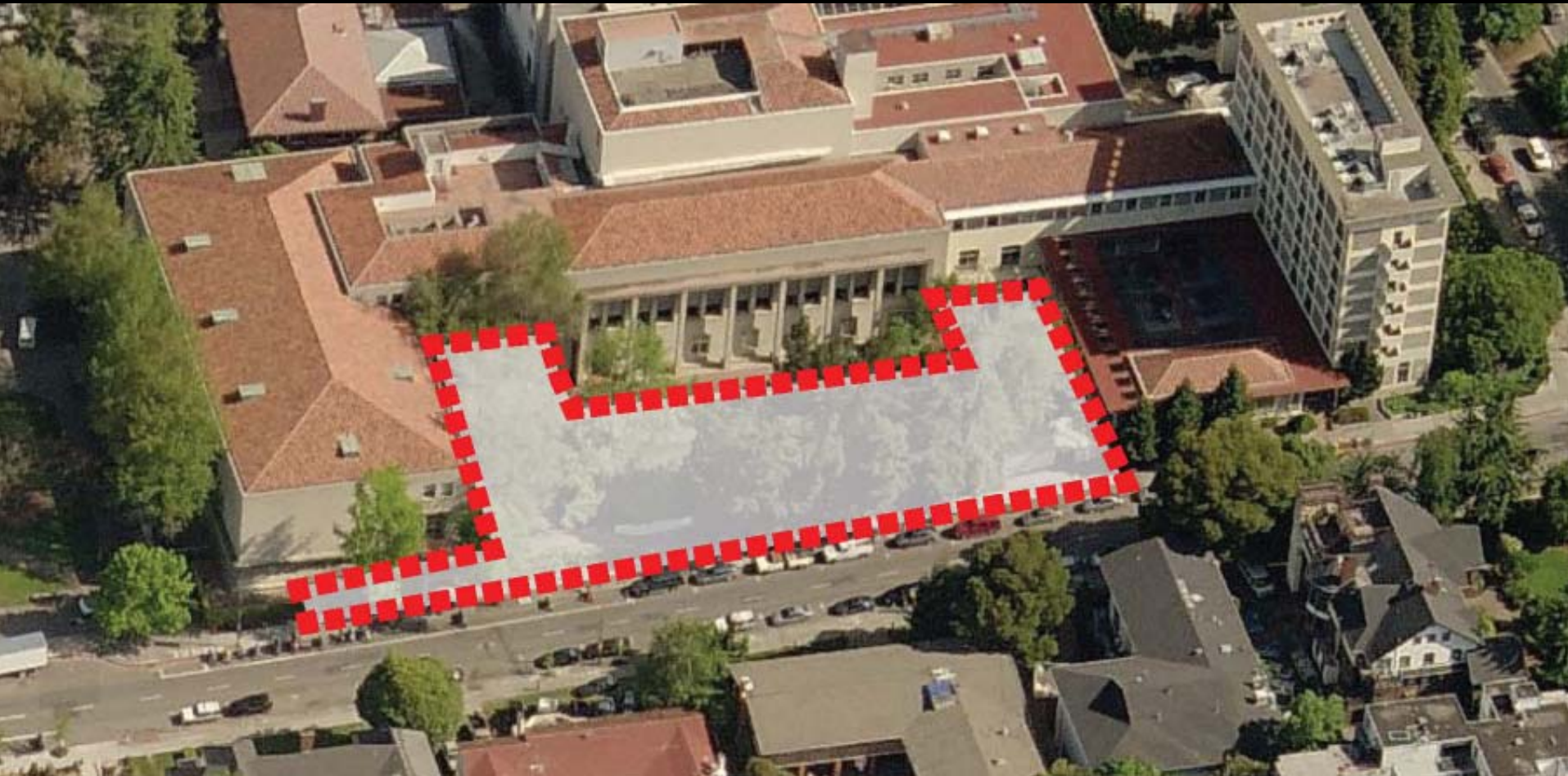
Project milestones

January 2008 - Preliminary discussion of goals, funding, and design concept

March 2008 - CIP amendment and finance approval



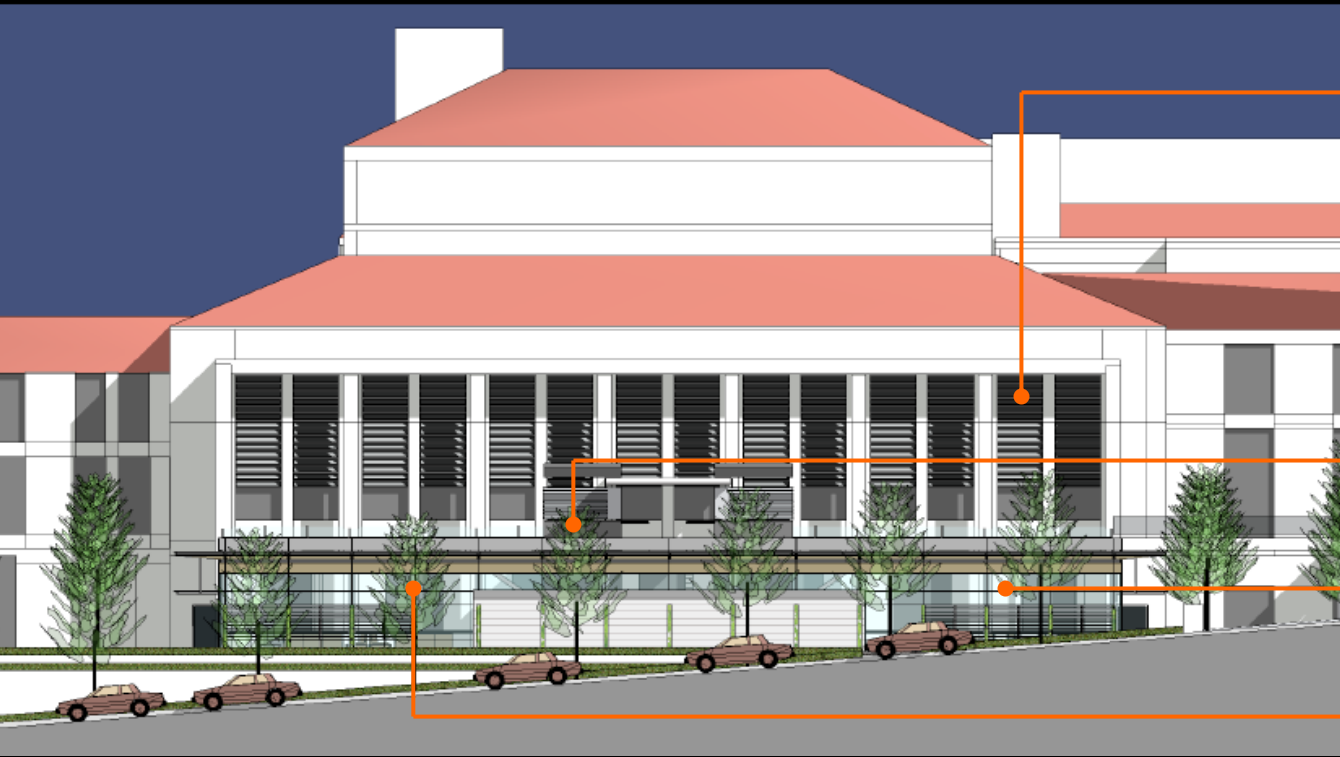
Law School Infill
Berkeley



Law School Infill
Berkeley



Law School Infill
Berkeley



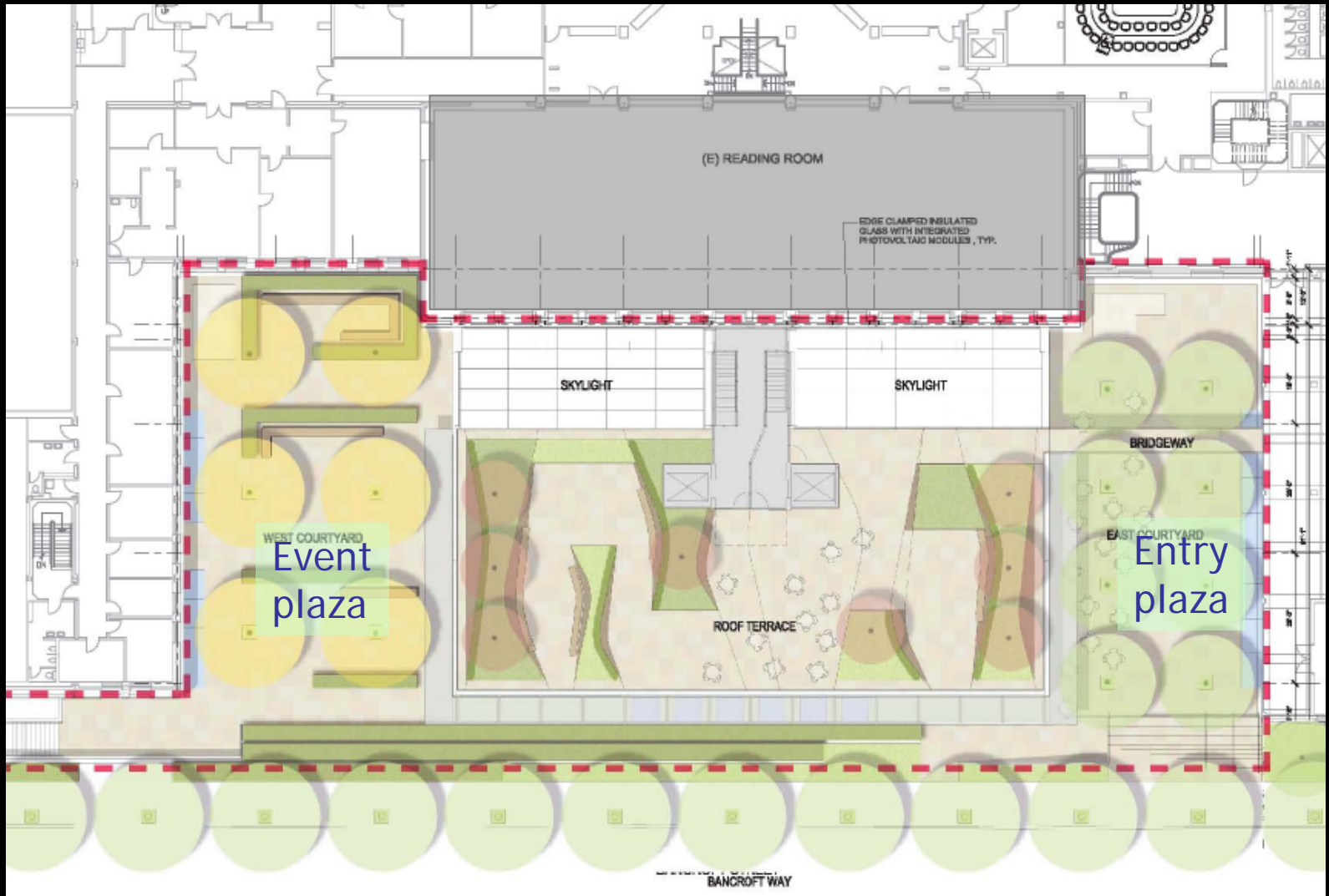
Reading room at existing building beyond

Terrace at roof of Classroom Pavilion

Classroom pavilion at Infill project

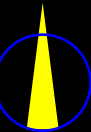
New street trees at Bancroft Way

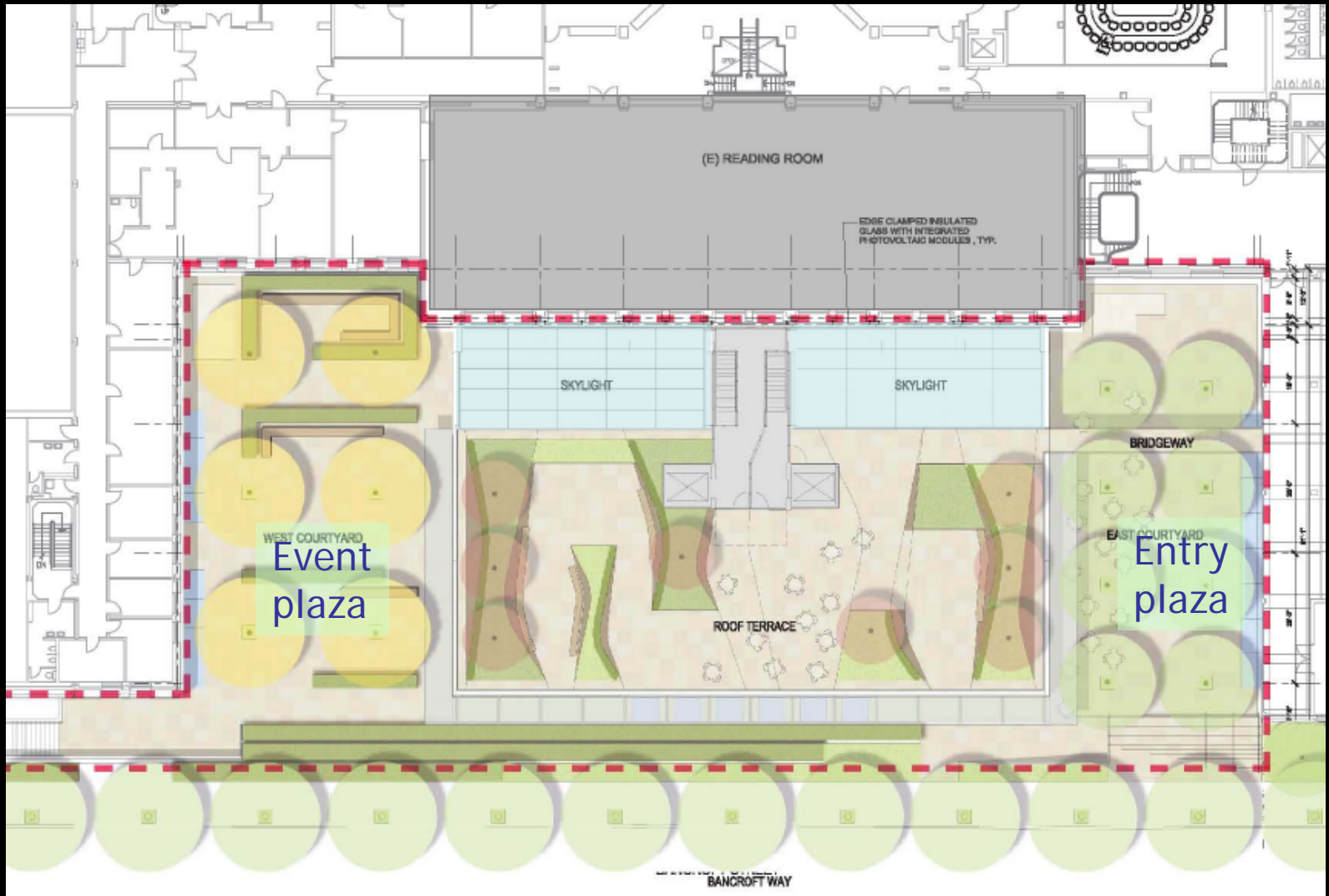
South elevation



Law School Infill
Berkeley

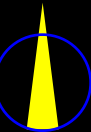
Plan at Reading Room & new Roof Terrace level

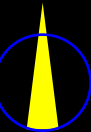
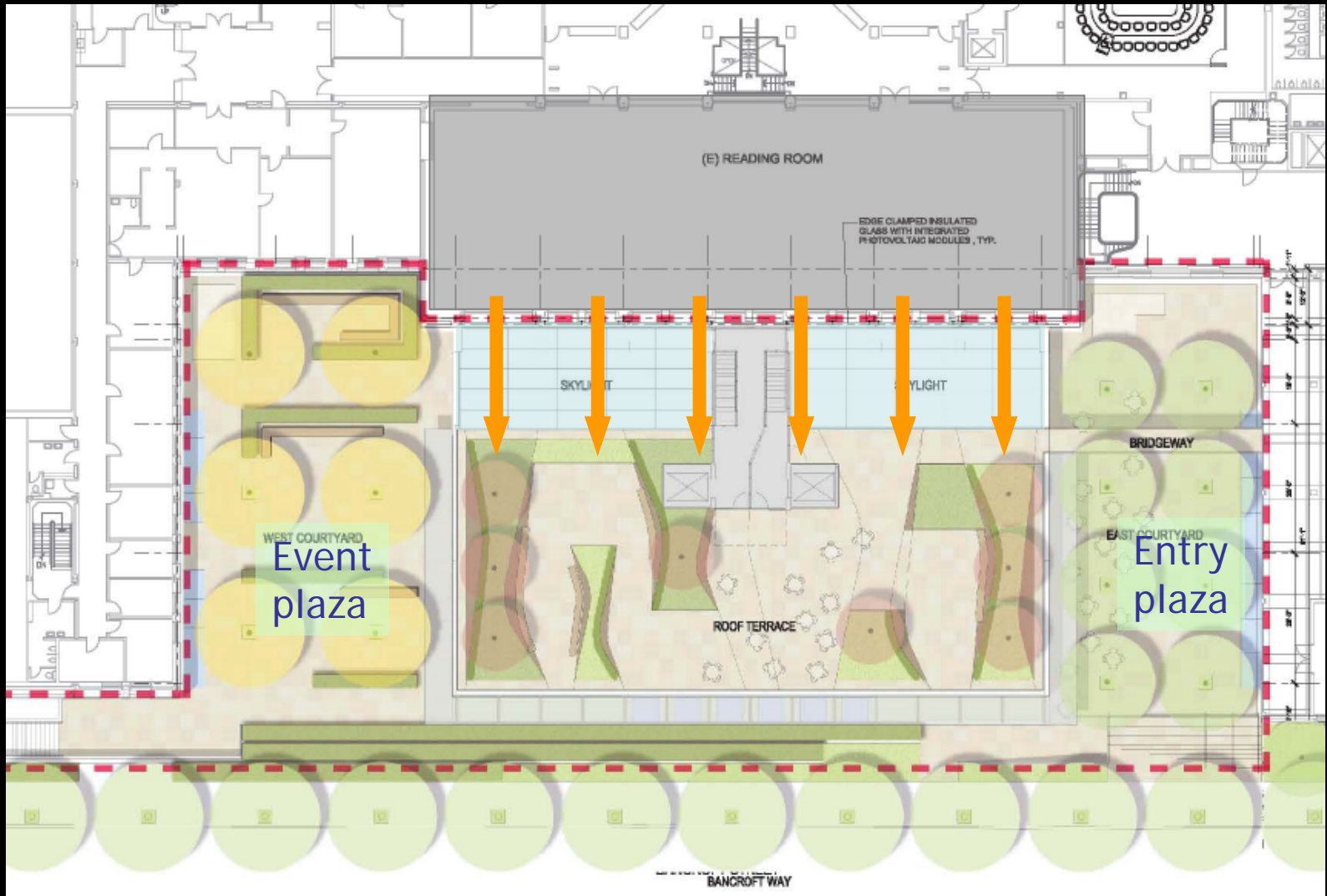


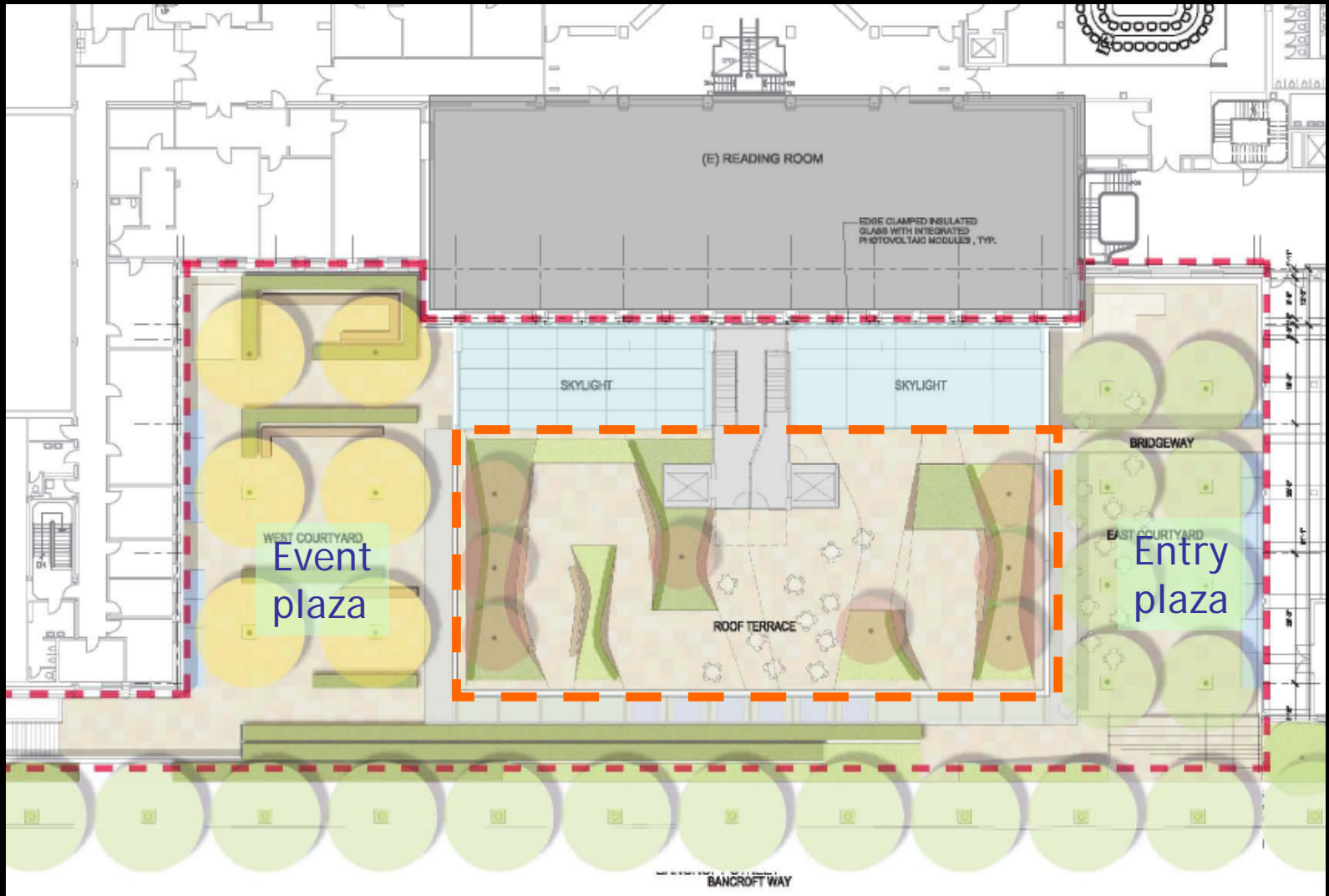


Law School Infill
Berkeley

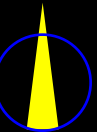
Plan at Reading Room & new Roof Terrace level

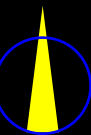
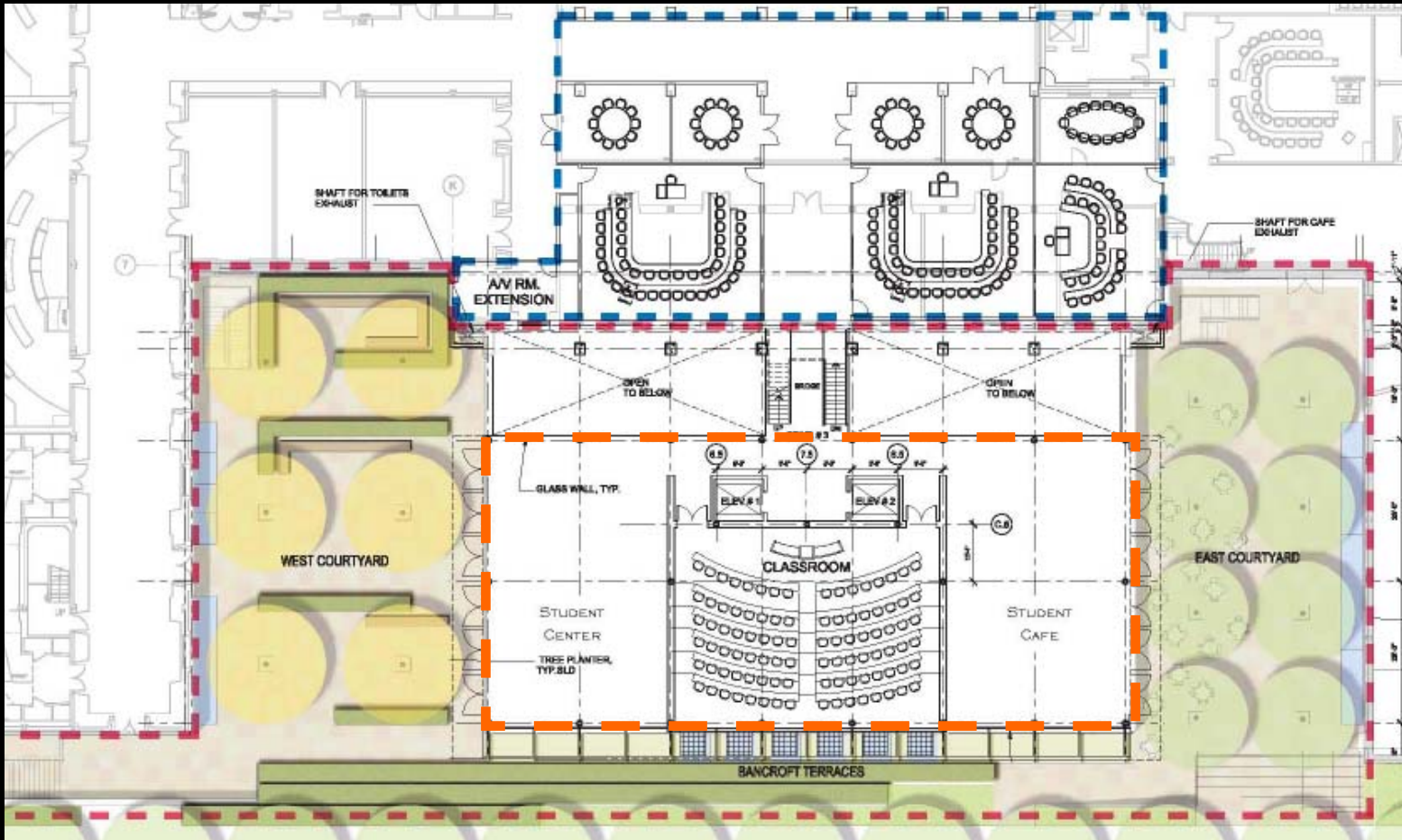


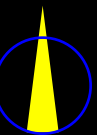
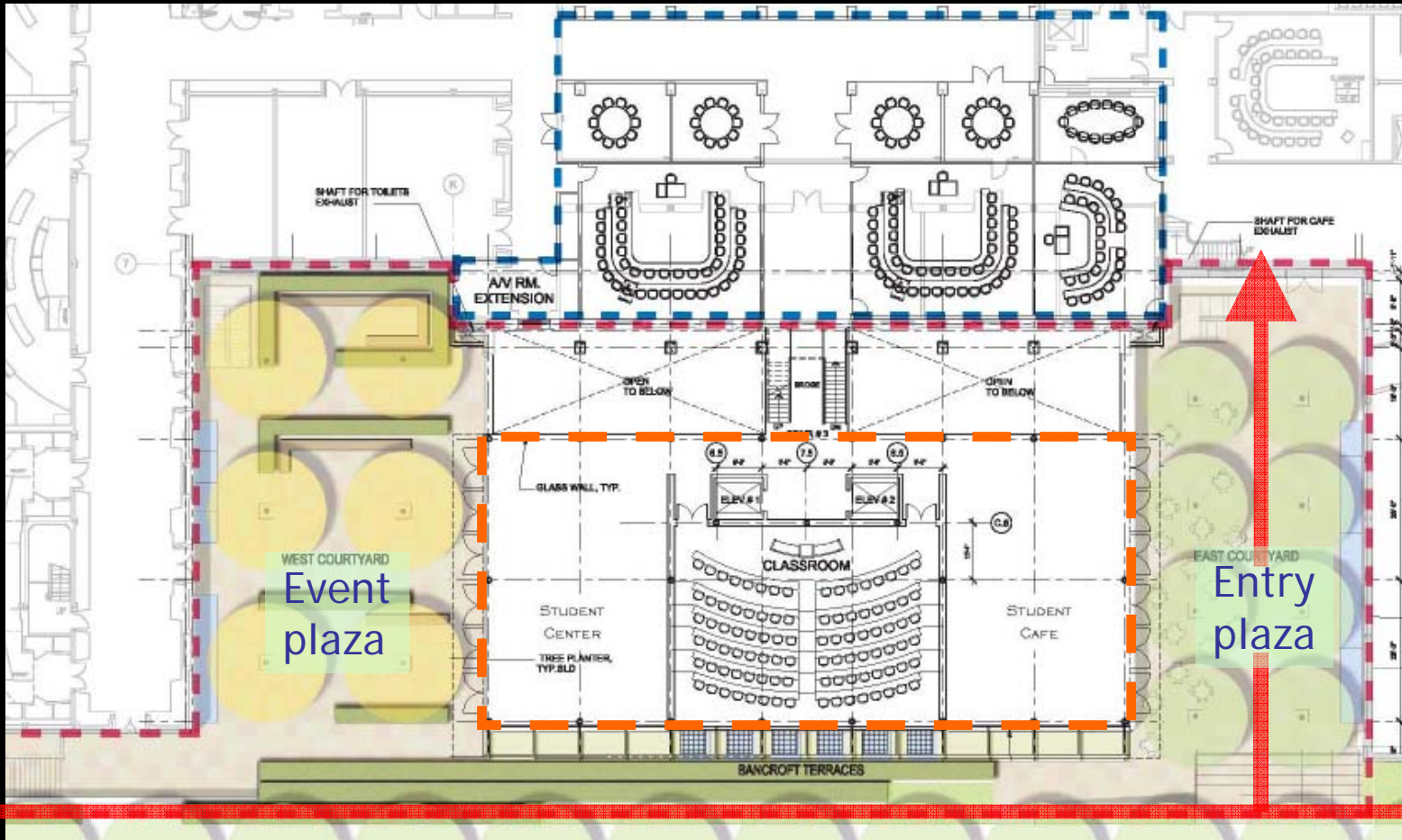


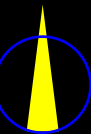


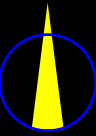
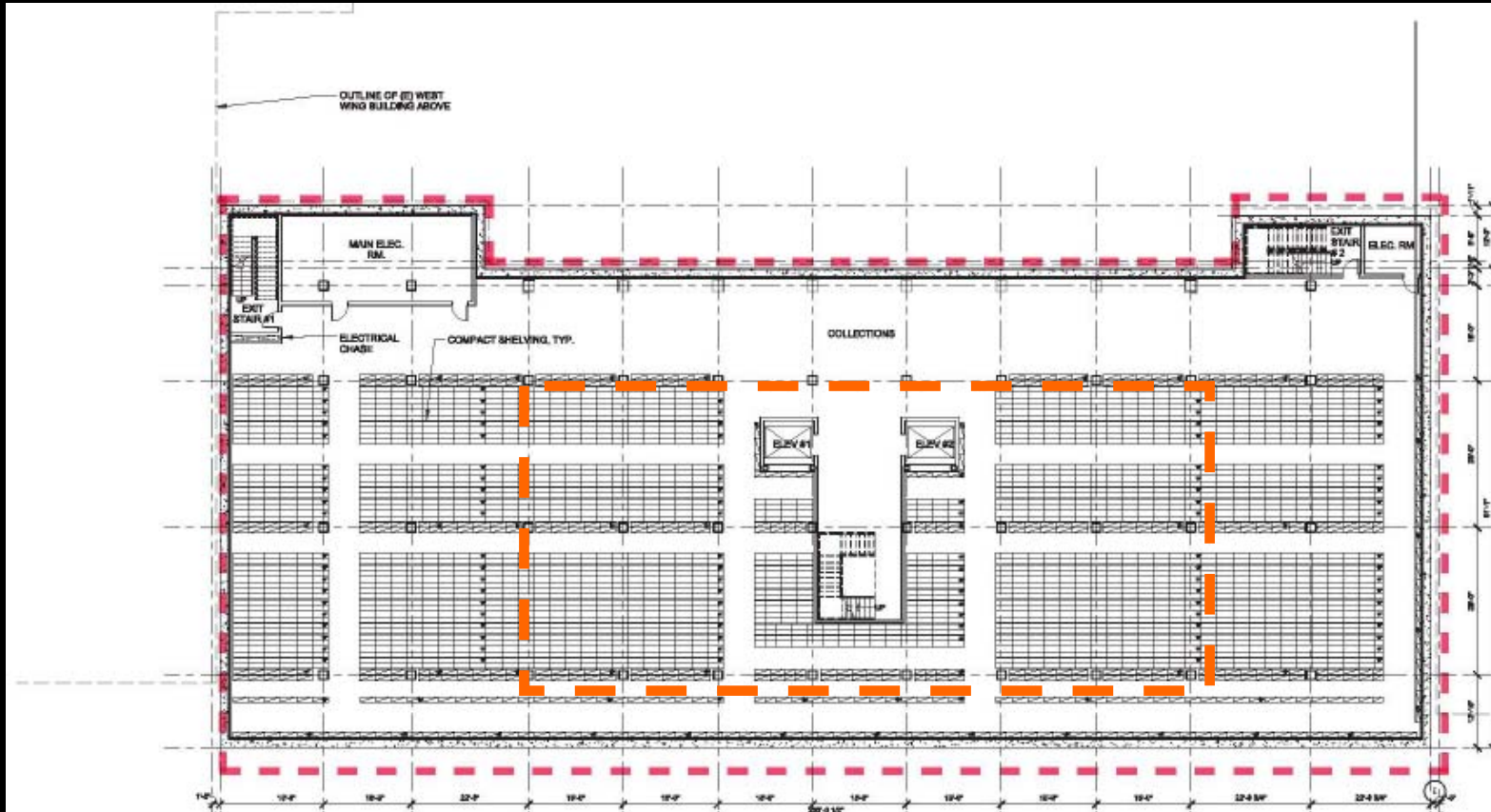
Law School Infill
Berkeley

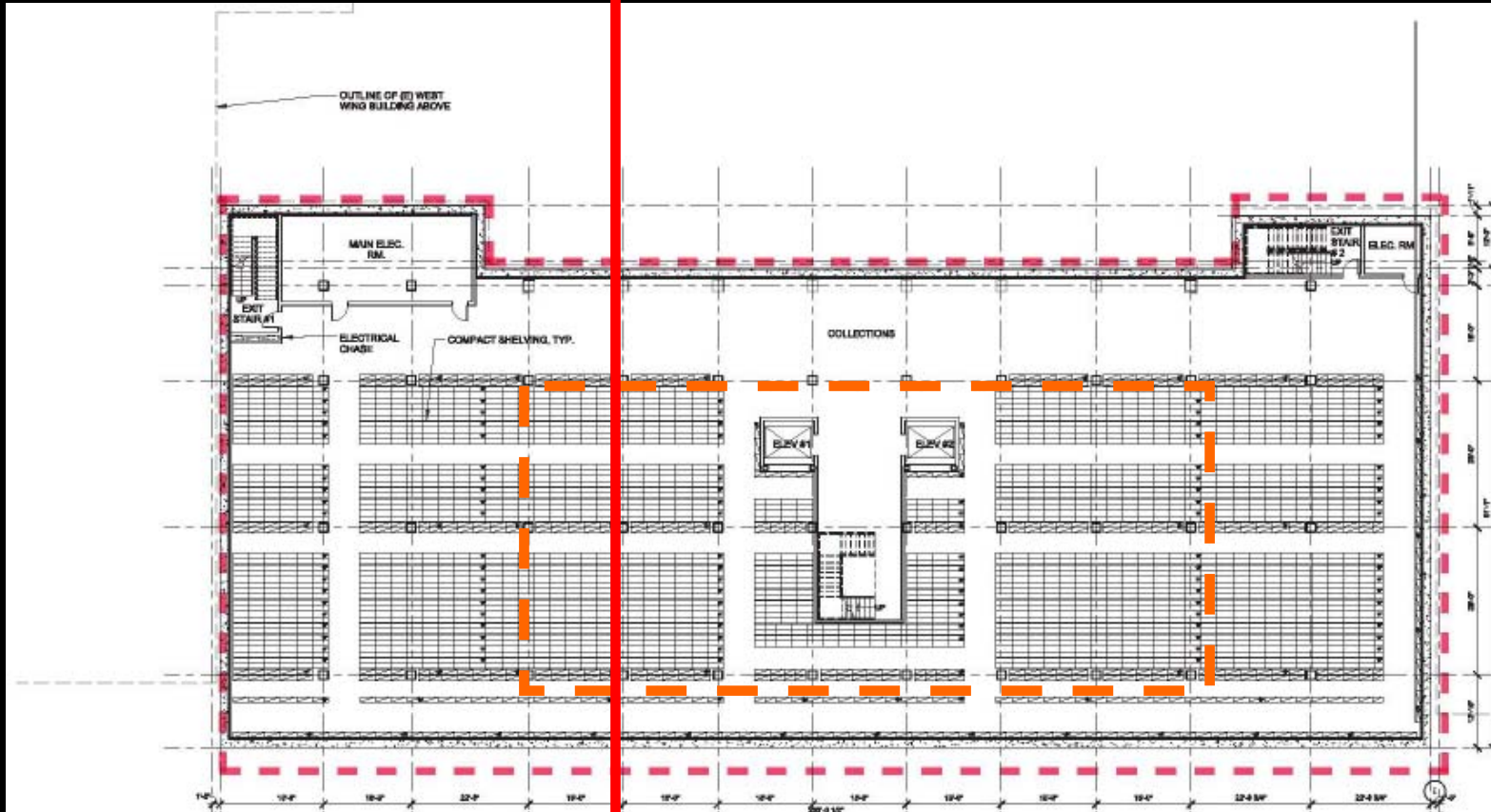






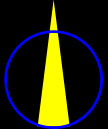


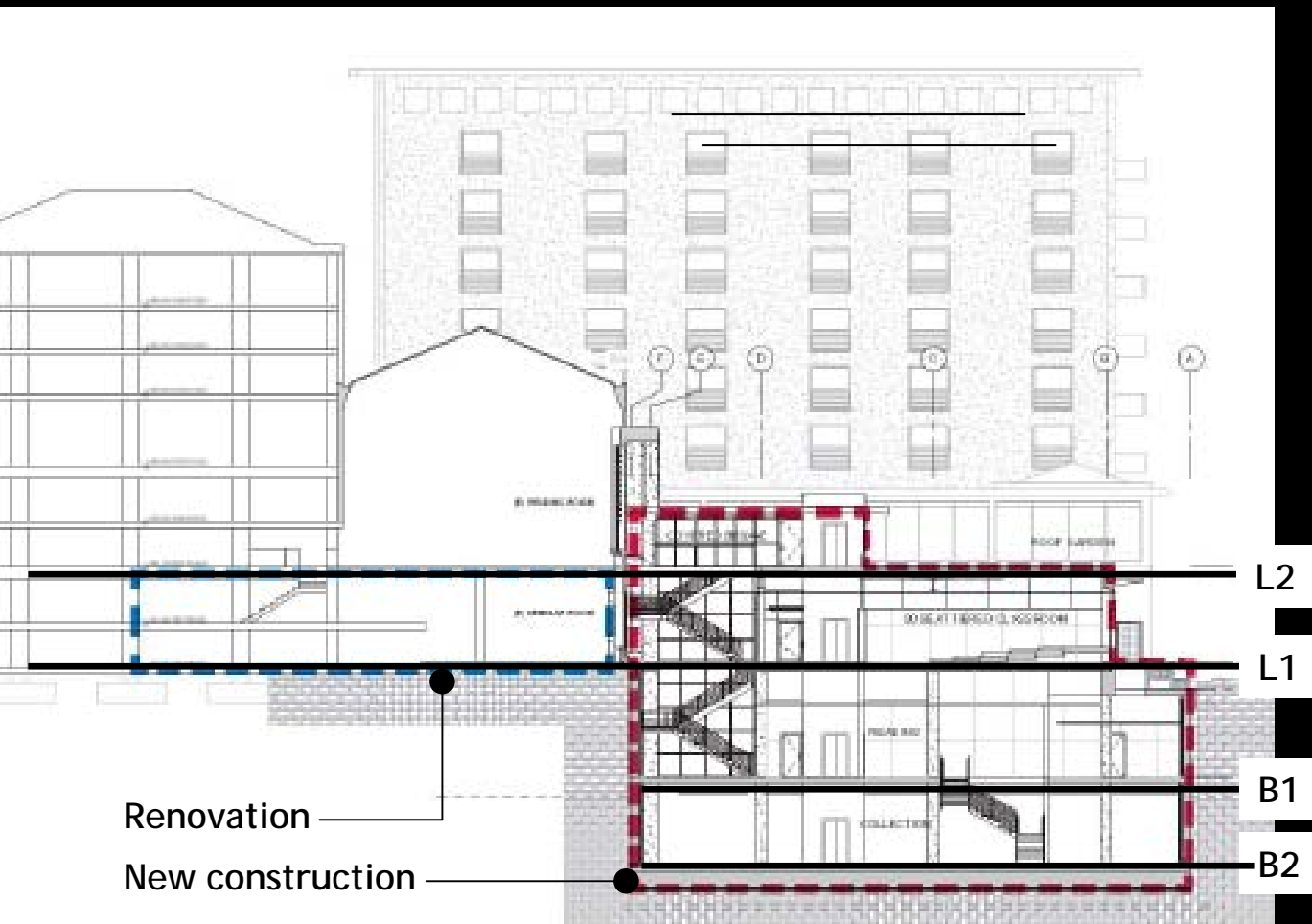




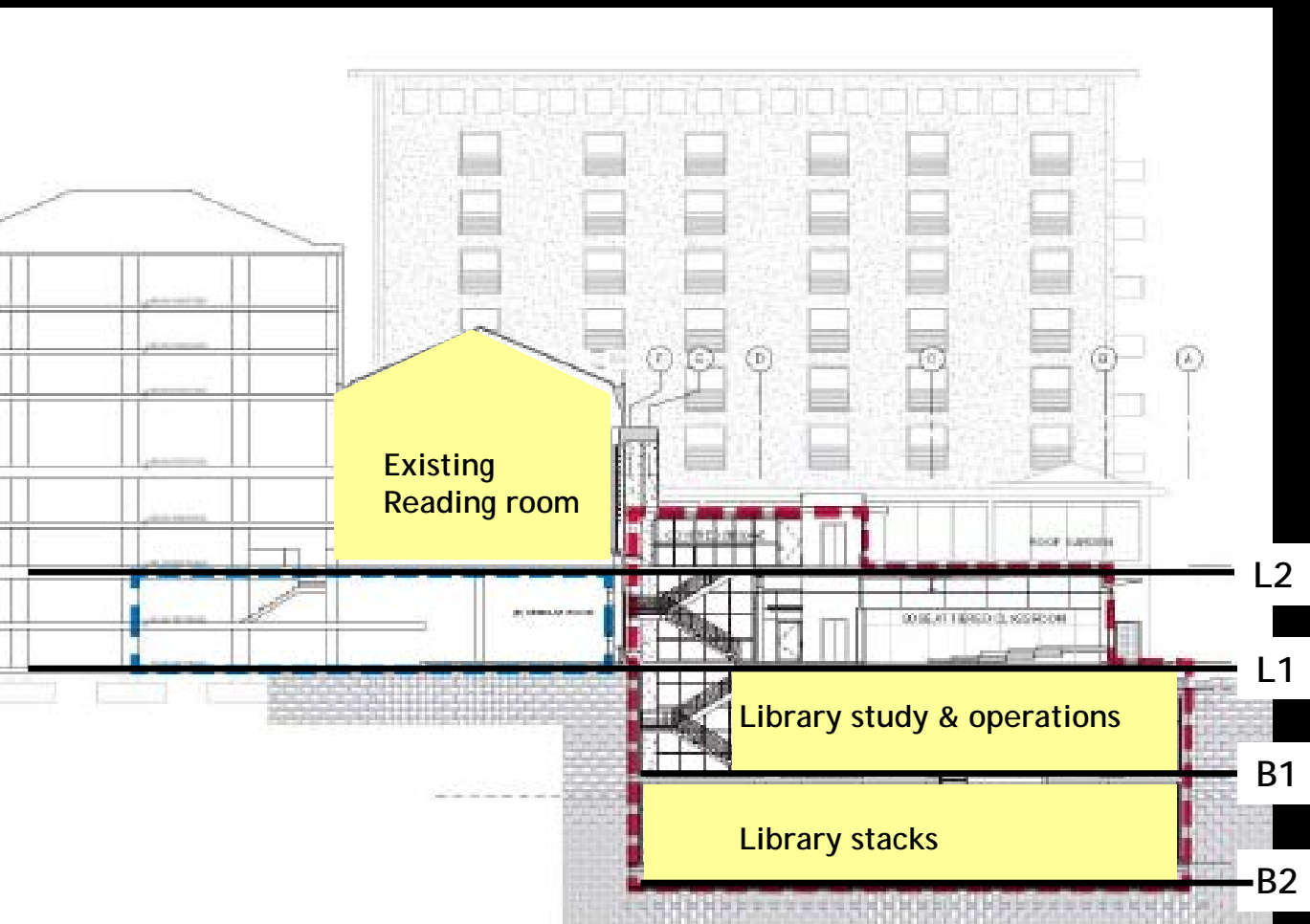
Law School Infill
Berkeley

Plan at B2

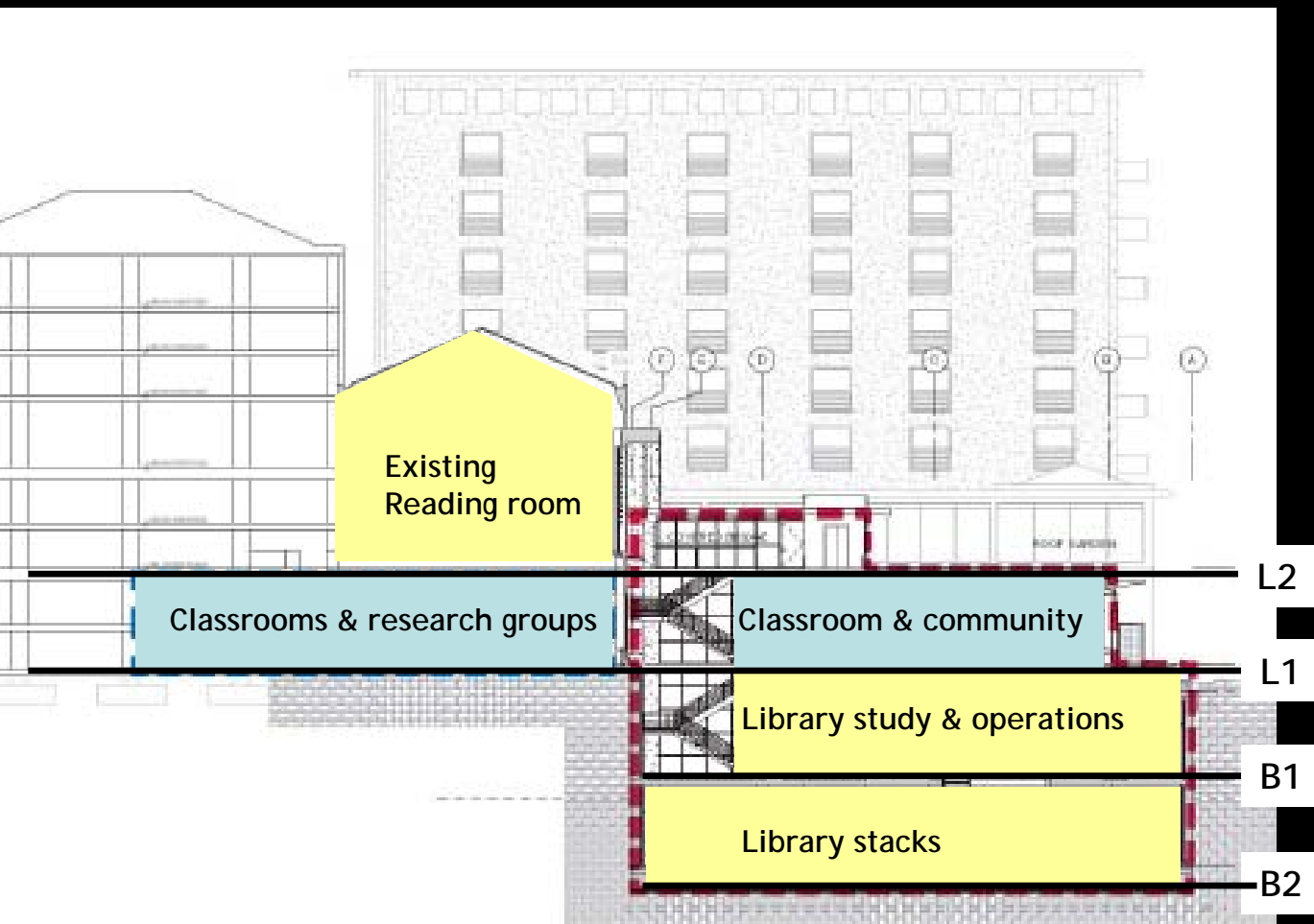




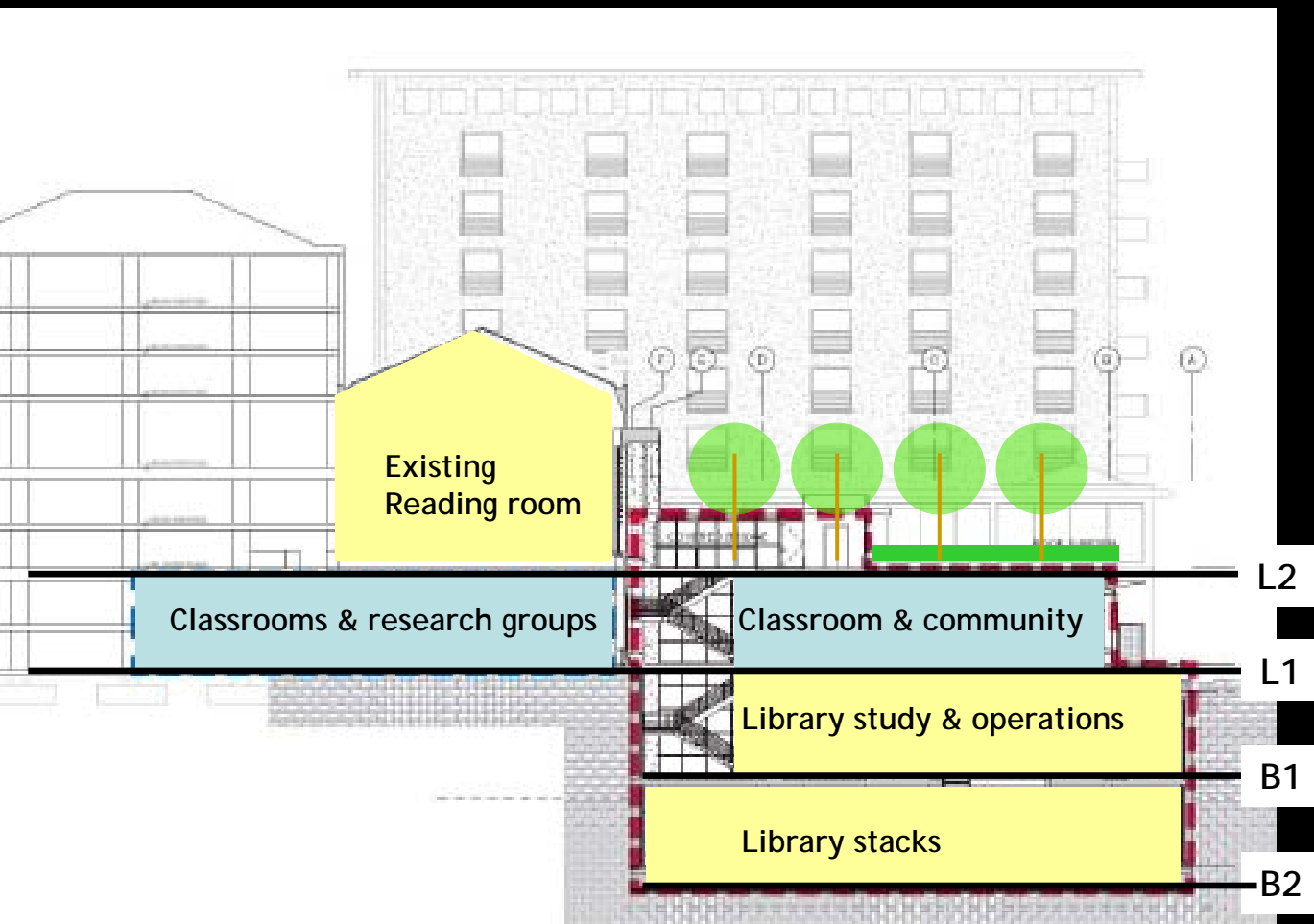
Section looking east



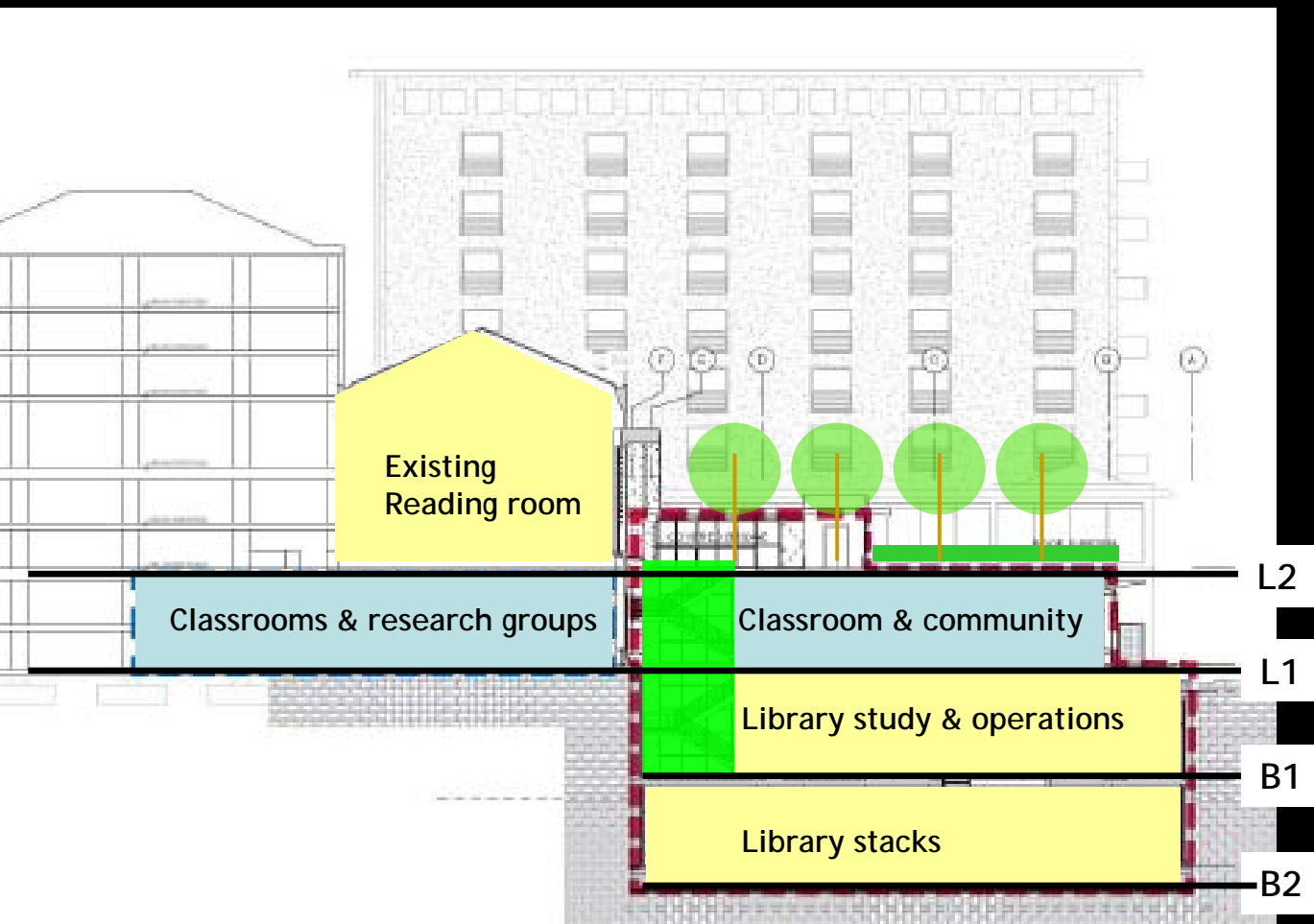
Section looking east



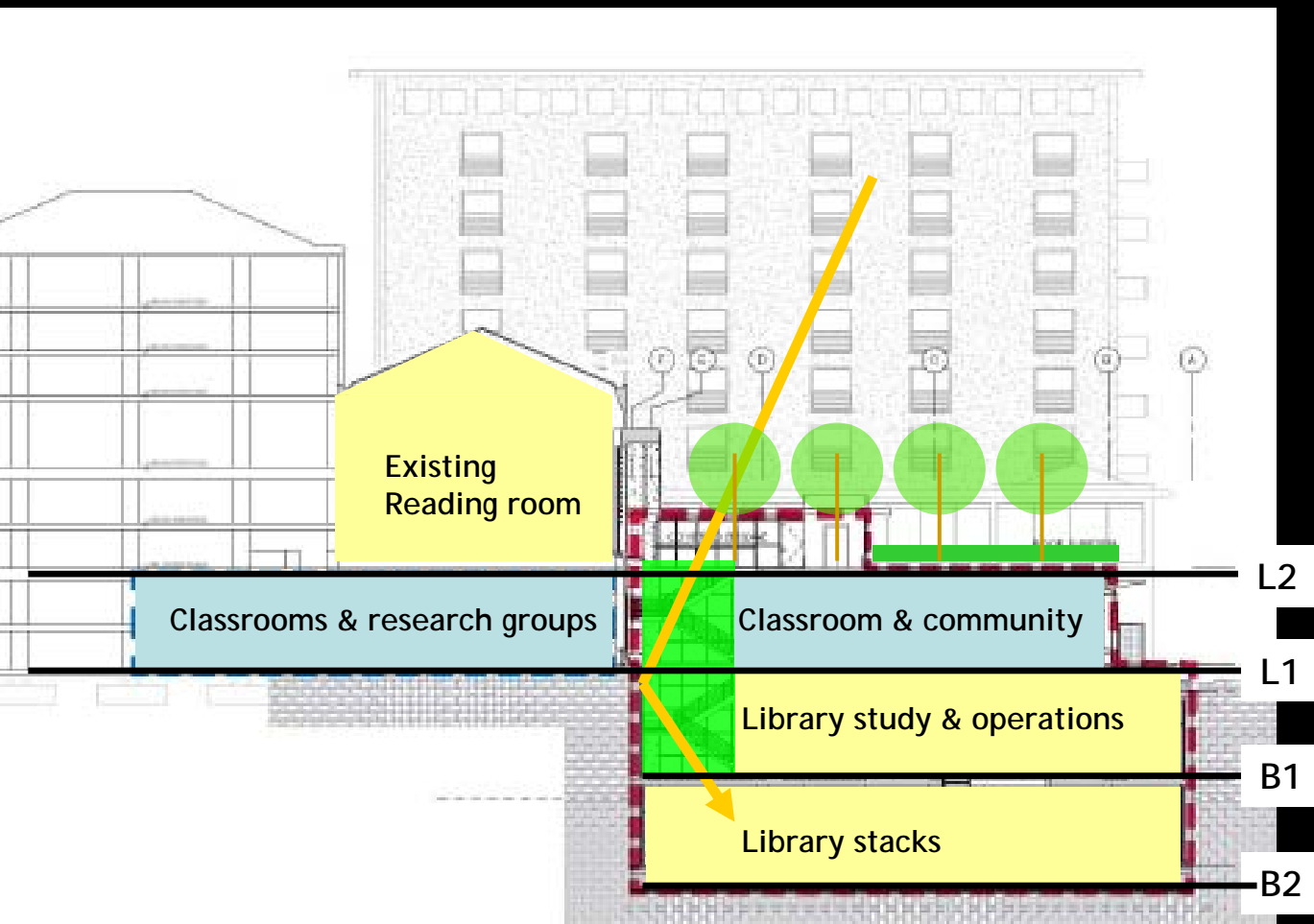
Section looking east



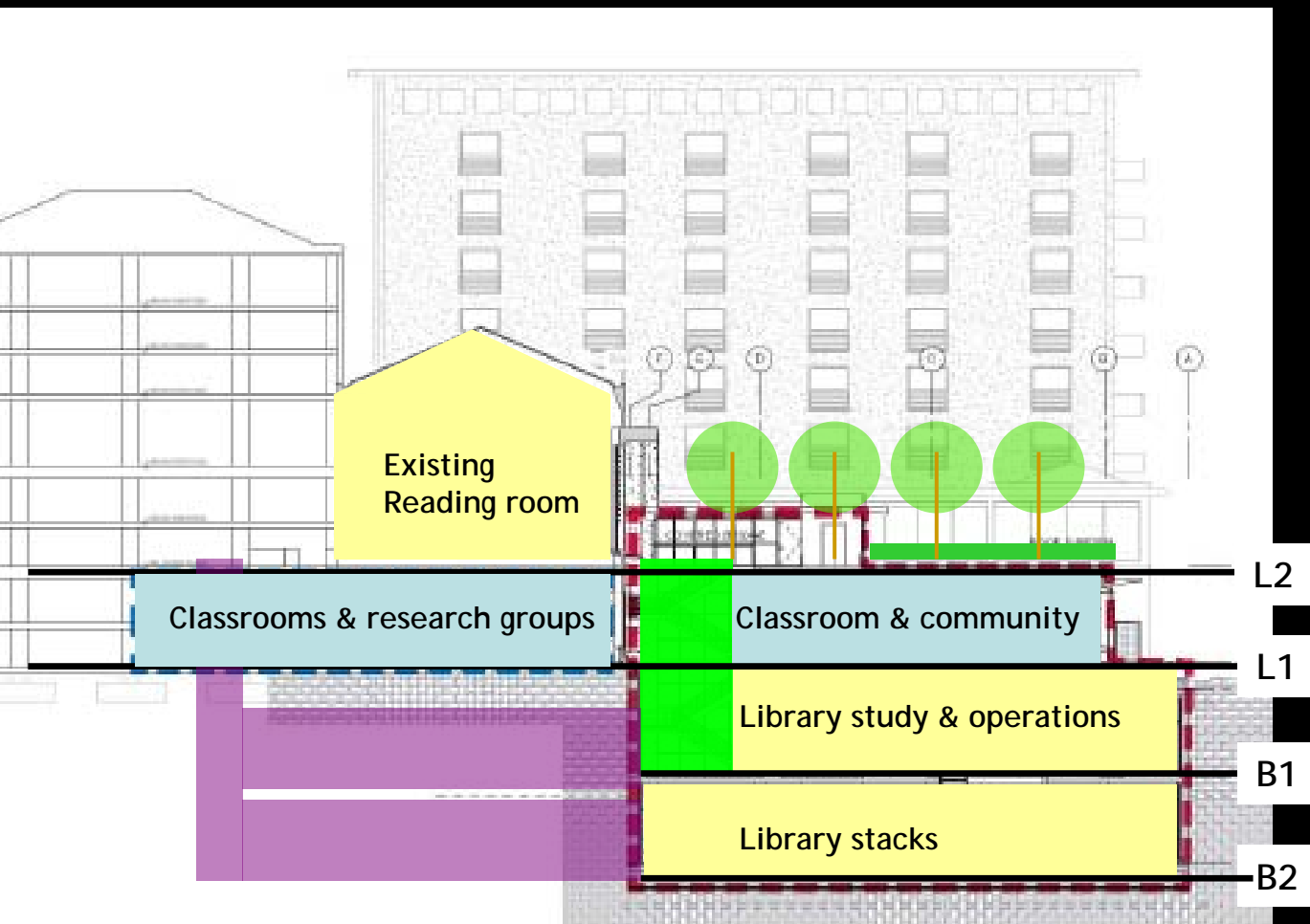
Section looking east



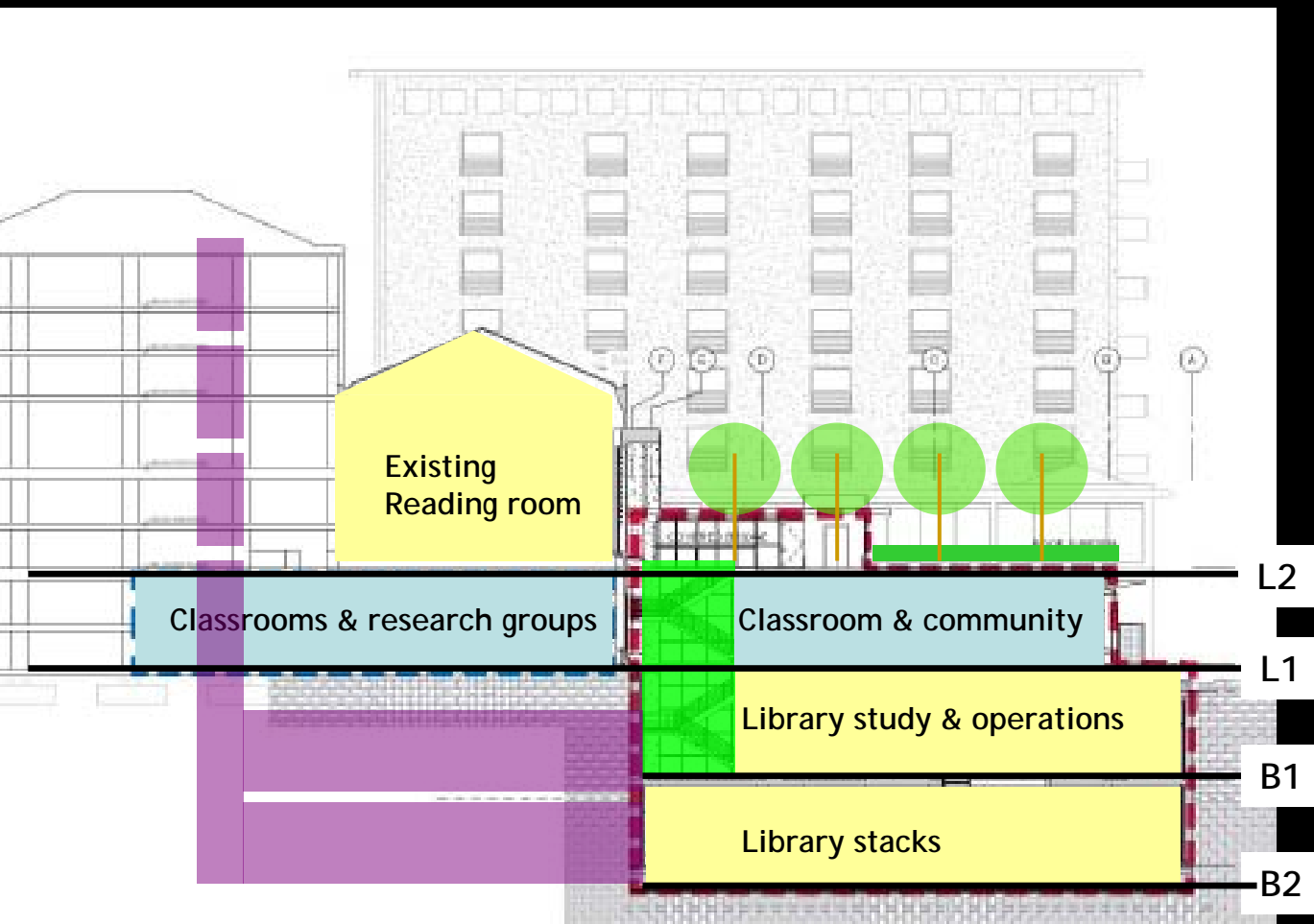
Section looking east



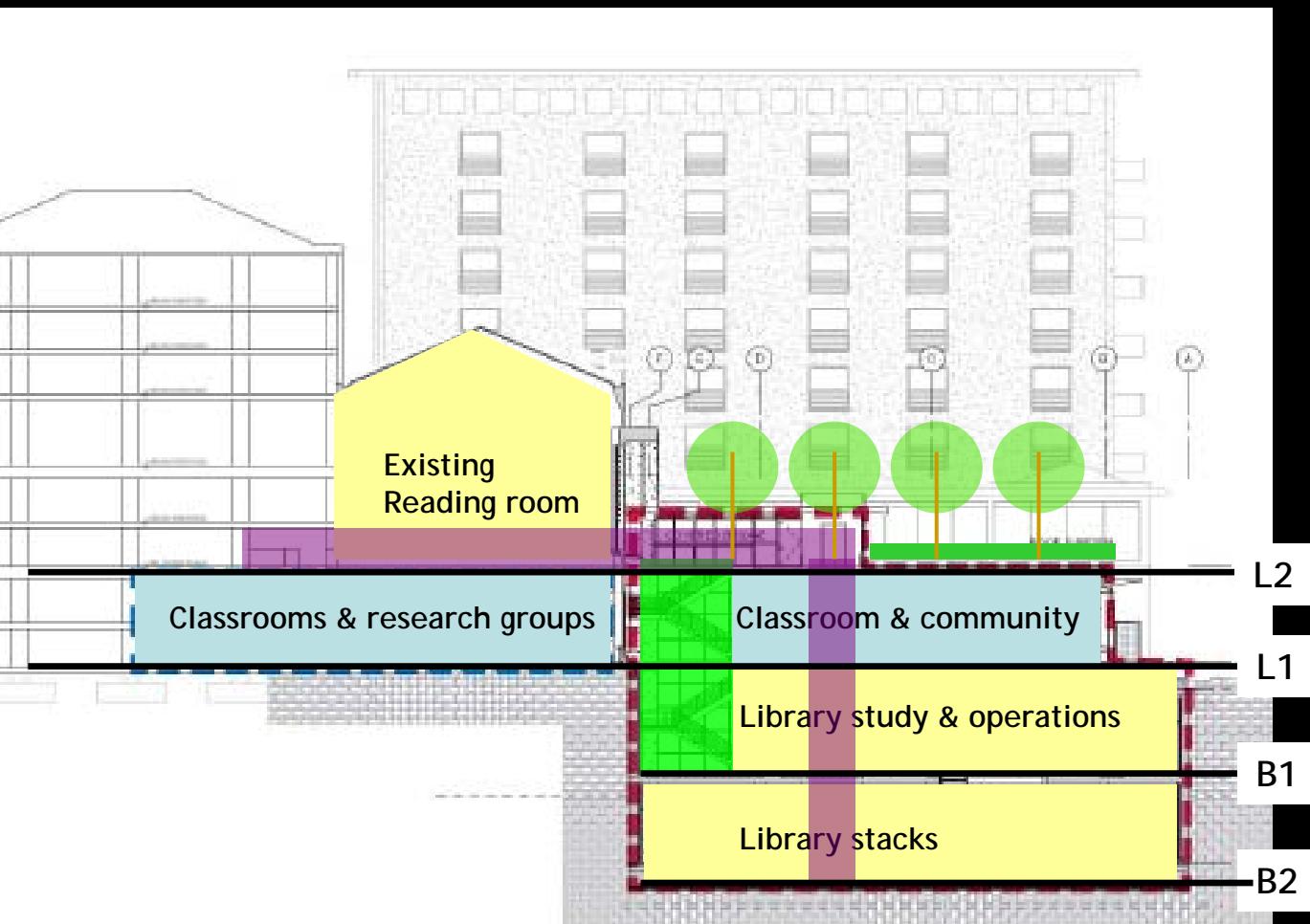
Section looking east



Section looking east

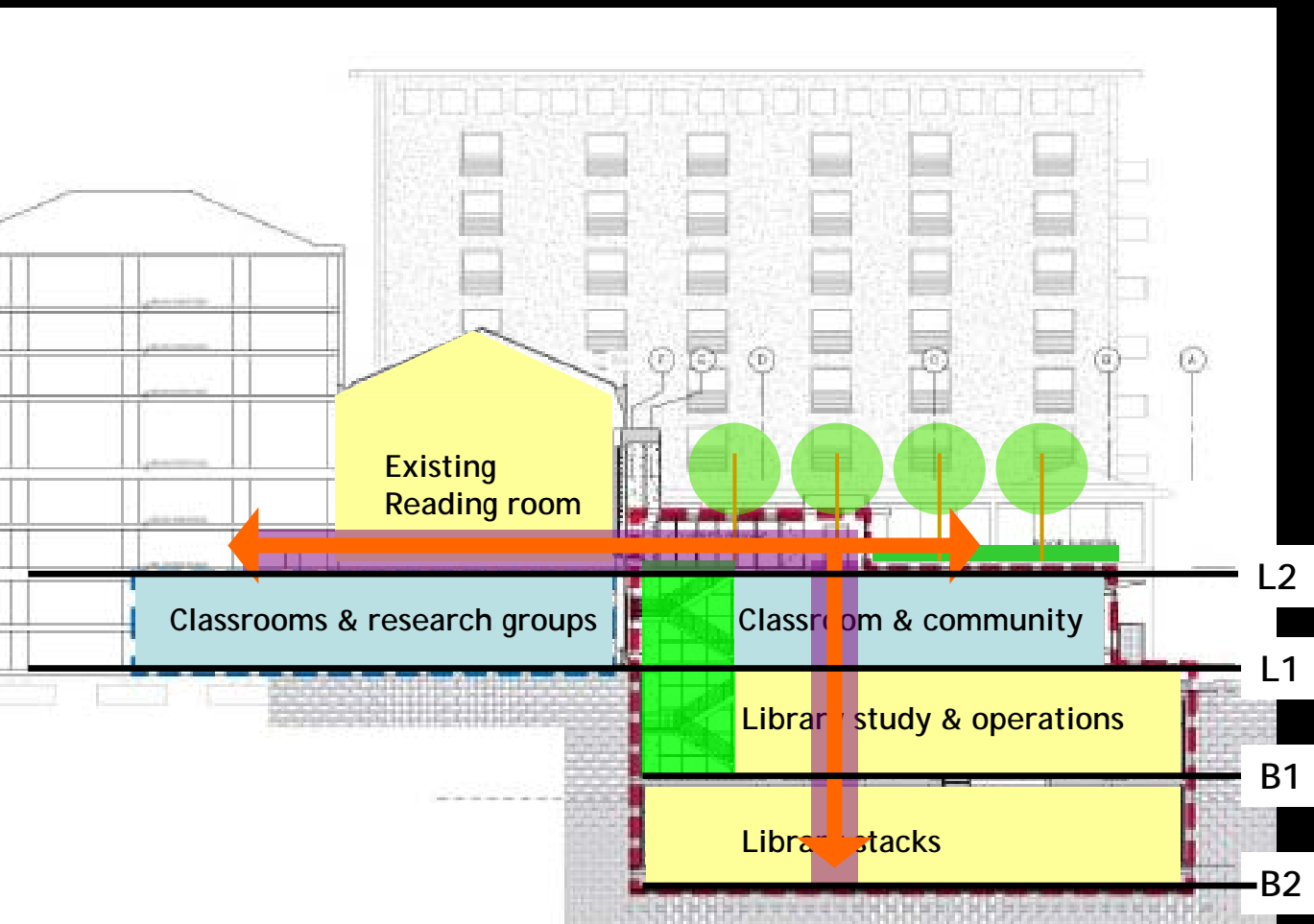


Section looking east

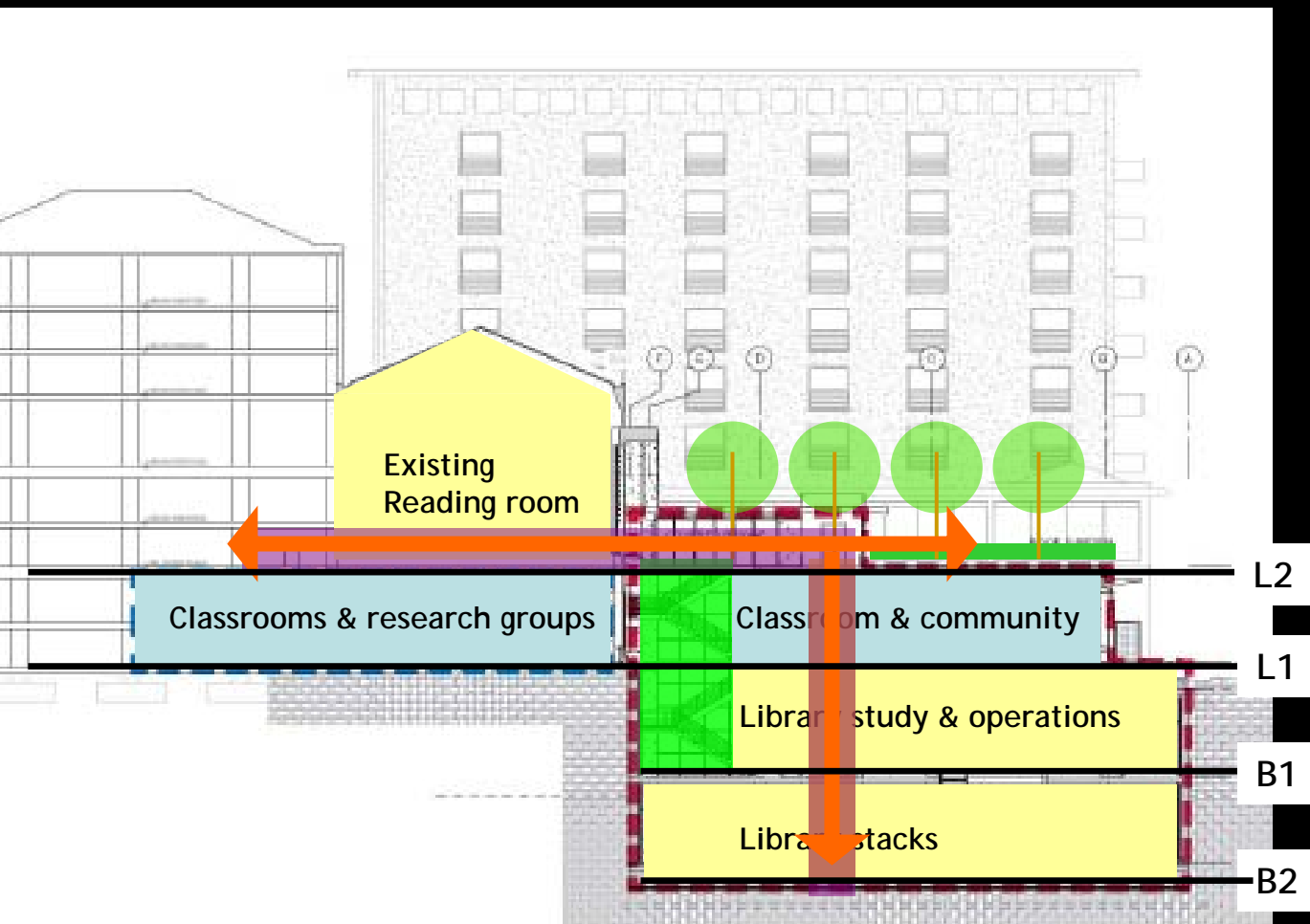


Section looking east

Law School Infill
Berkeley



Section looking east

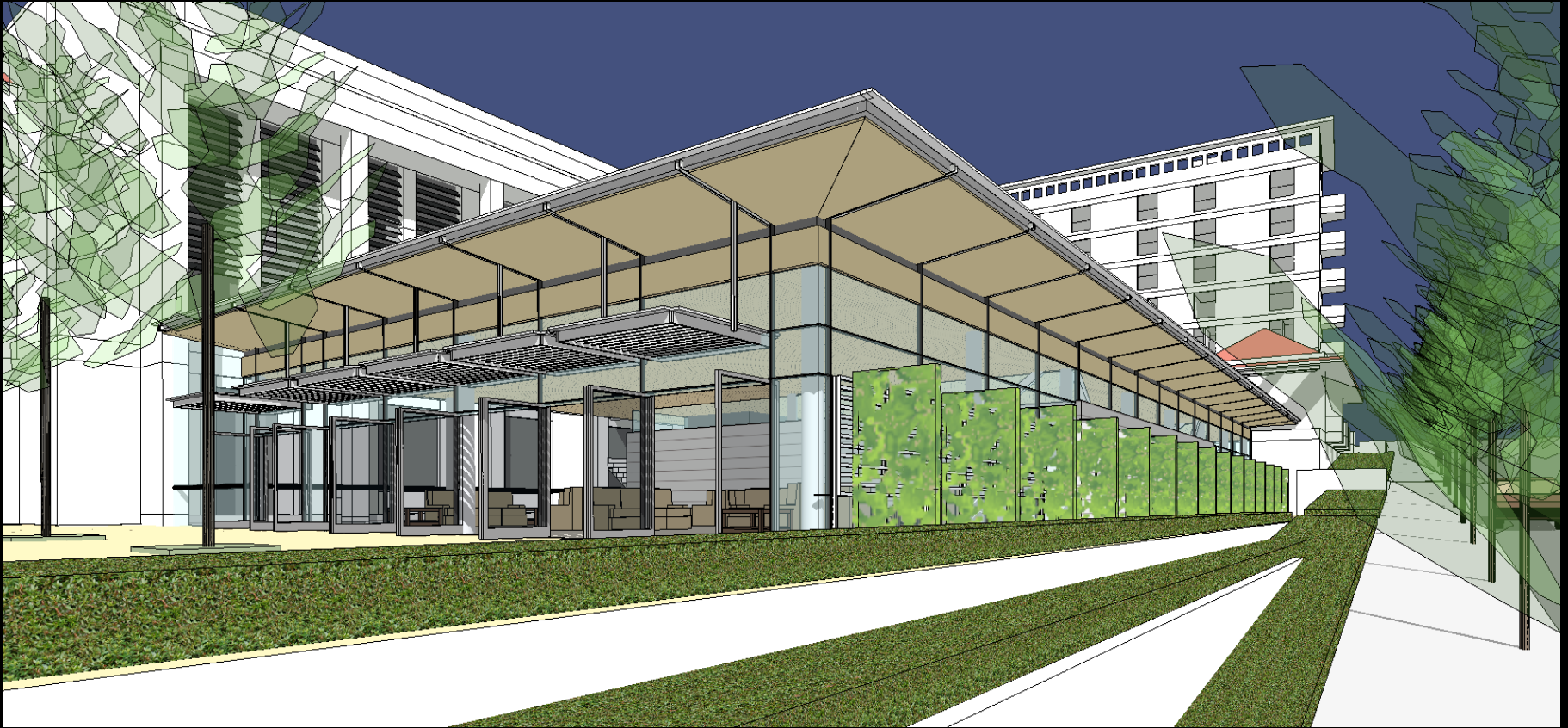


Section looking east



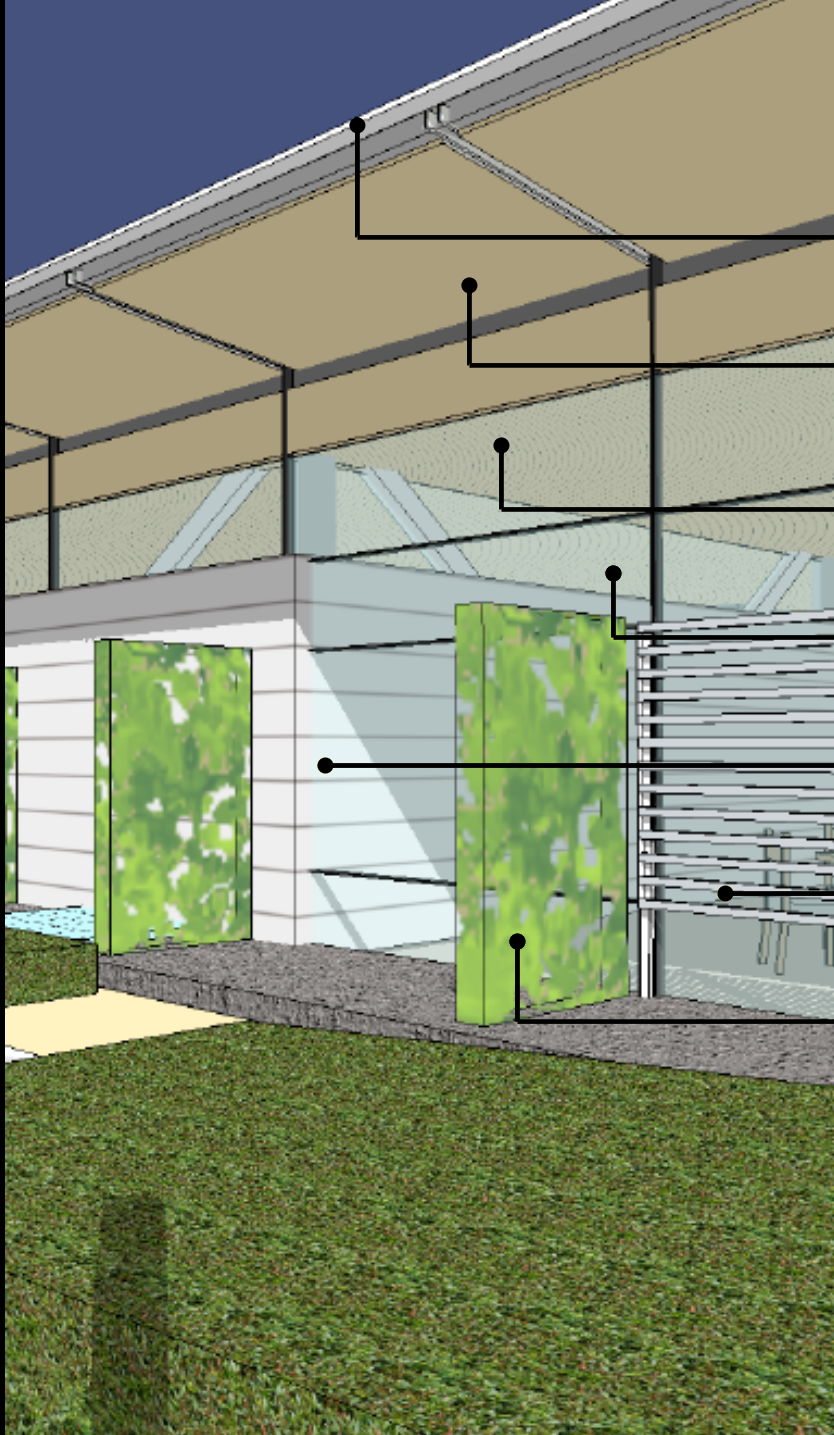
view from southeast

Law School Infill
Berkeley



Law School Infill
Berkeley

view from southwest



Aluminum cladding

Wood plank at soffit

Acoustical wood ceiling

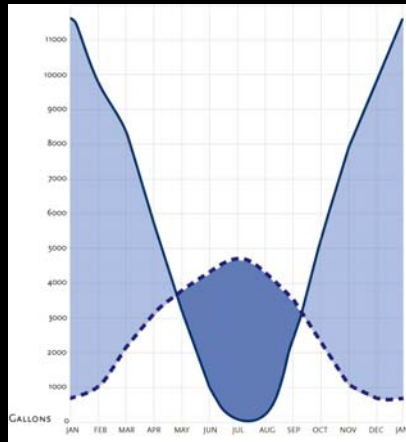
Insulating glass

Terra cotta cladding

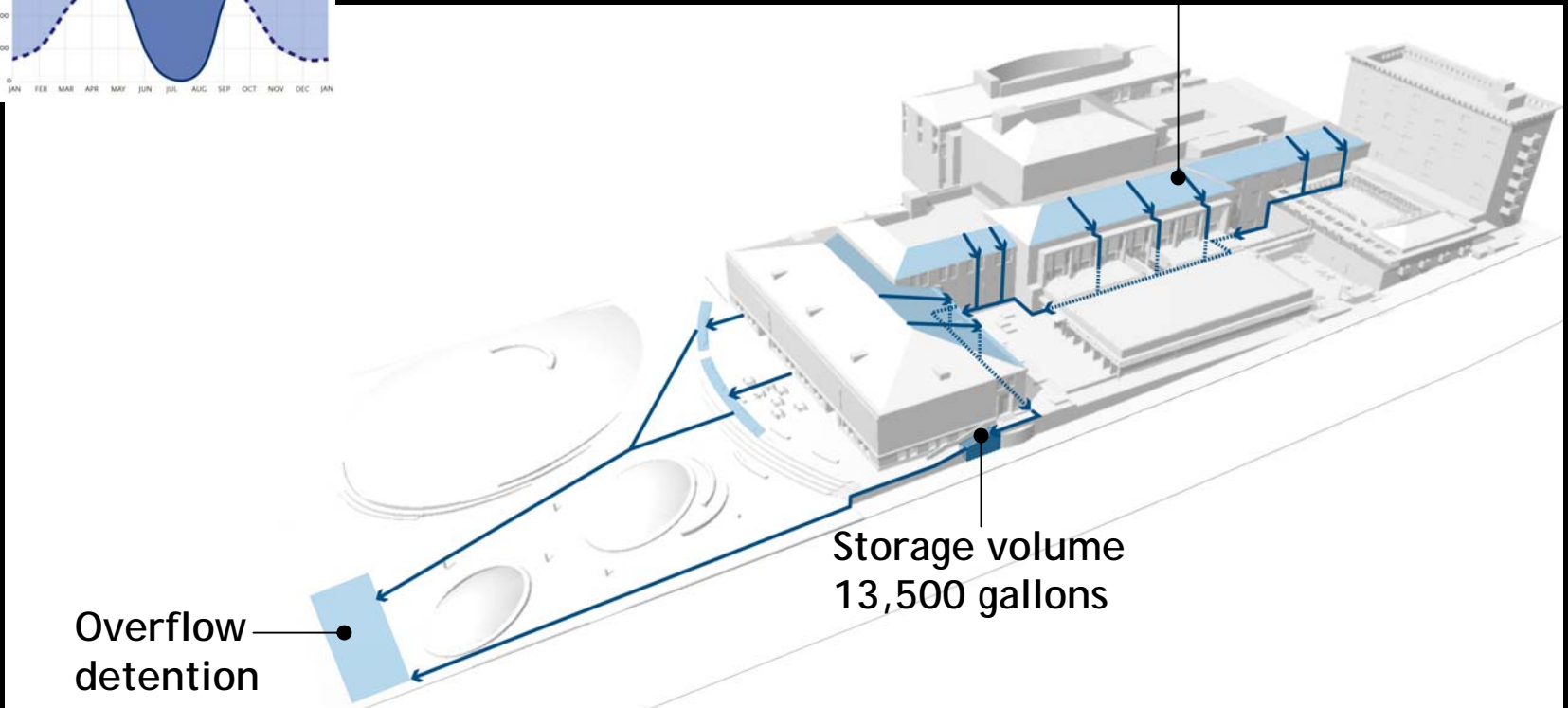
Sunscreen: terra cotta rods

Vines on stainless steel trellis

Sustainable design: Rainwater management



Roof rainwater supply
65,600 gallons/year
from 15,000 sf existing roof



Key metrics

	Conceptual design	Design development
new construction	50,910	52,072
renovation	8,057	27,521
total	58,967	79,593
<hr/>		
construction cost (sub 1)	\$56,140,000	\$56,140,000
building cost per GSF	\$952	\$705

discussion